

# Statistical notice

## Proposed change to the NHS England Venous Thromboembolism Statistics Publication

### Summary of issue

NHS England is asking user views on the proposed change to publication frequency from monthly to quarterly for the NHS England statistics on the number and proportion of admitted adult patients in England who have been risk assessed for VTE Venous Thromboembolism (VTE).

The main reason for this proposed change is to reduce burden, which can be now done since coverage and compliance with the VTE standard is high. Providers will still be required to collect data on VTE risk assessments monthly; however, they will not need to submit these on a monthly basis, rather at the end of each quarter. The figures will continue to be broken down by month at each quarterly publication.

### For consideration

**At present, NHS England publish statistics on VTE monthly. We intend to reduce the frequency of publication from MONTHLY to QUARTERLY with effect from APRIL 2015.**

The main reason for this proposed change is to reduce burden. Providers will still be required to collect data on VTE risk assessments monthly; however, they will not need to submit these on a monthly basis, rather at the end of each quarter. The figures will continue to be broken down by month at each quarterly publication.

The only change proposed here is a change to the frequency of collection and publication. The method and calculation remains the same as previously. It is not expected that this change will impact adversely on the quality, comparability or coverage of these statistics. Rather, it will reduce the burden on NHS Providers to submit data on a monthly basis, and on NHS England who collate and publish the information each month.

A further reason to make this change now is that coverage and compliance with the VTE standard is high, as illustrated below. There has been a steady increase in the proportion of adult admissions risk assessed for VTE since Quarter 2 2010/11 in all providers of NHS funded acute care, from 53% in Quarter 2 2010/11 to 96% in Quarter 2 2013/14. This proportion has remained stable from Quarter 2 2013/14 to Quarter 2 in 2014/15, so there is little variability between months.

## Detail

The data collection asks for three items of information:

1. Number of adults admitted as inpatients in the month who have been risk assessed for VTE on admission to hospital using the criteria in the National VTE Risk Assessment Tool
2. Total number of adult inpatients admitted in the month
3. Calculated from (1) and (2), the percentage of adult hospital admissions, admitted within the month assessed for risk of VTE on admission

## Background

The VTE data collection has been mandatory for acute providers since June 2010. Since its inception, the coverage and compliance with the standard has improved considerably.

### Coverage

The number of providers submitting a return has improved since the collection started in 2010. In Quarter 2 2010/11, 94% of trusts submitted VTE risk assessment data, this increased quickly to 100% by Quarter 3 2010/11 and has remained stable since, at around 99-100% (Figure 1).

The number of independent sector organisations providing NHS funded acute care has also steadily increased. In Quarter 2 2010/11, there were 16 independent sector providers submitting VTE risk assessment data this has increased to 162 independent sector providers in Quarter 2 2014/15 (Figure 2).

*Figure 1 - Percentage of trusts submitting data each quarter, Quarter 2 2010/11 to Quarter 2 2014/15*

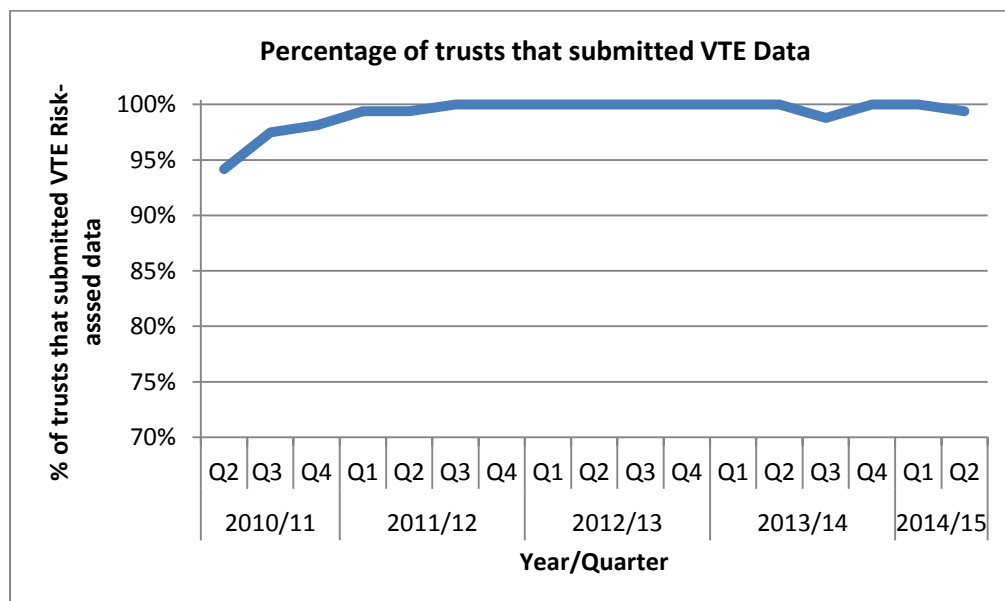
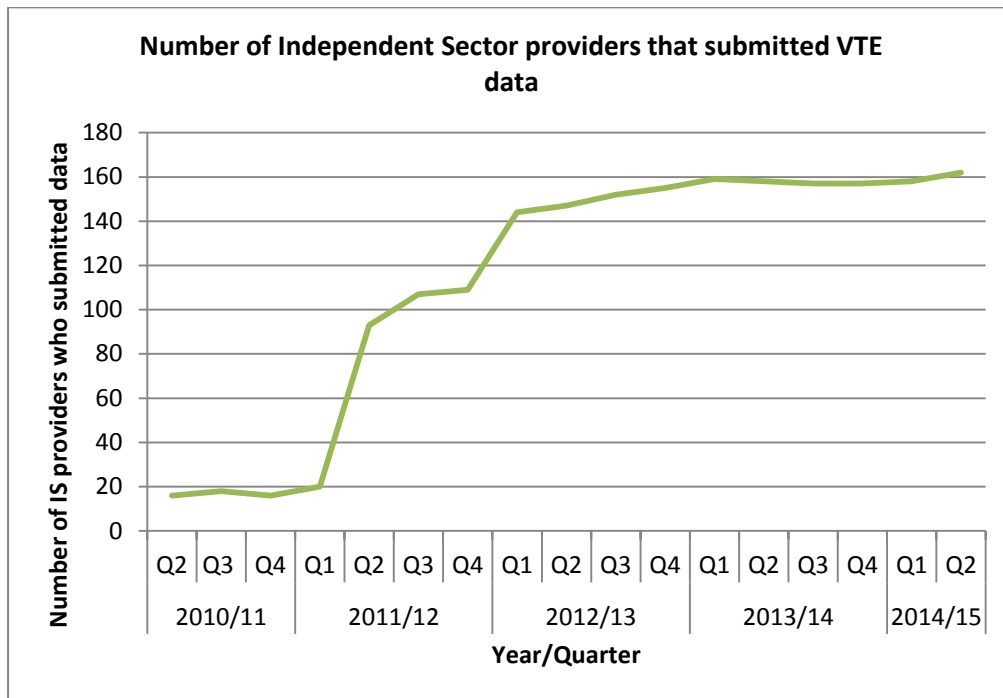


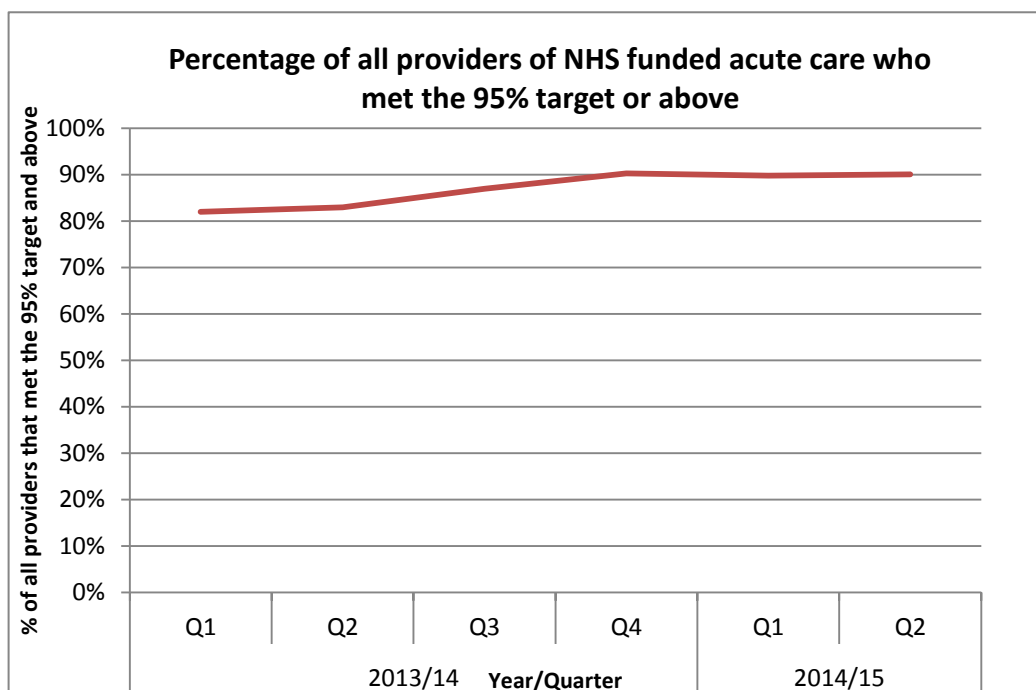
Figure 2 – The number of independent sector providers submitting data each quarter, Quarter 2 2010/11 to Quarter 2 2014/15



**Compliance**

The percentage of all providers of NHS funded acute care complying with the NHS standard contract of 95% or above admitted patients risk assessed have increased. In Quarter 1 2013/14, 82% of providers met the 95% target or above. In Quarter 2 2014/15, this has increased to 90% (Figure 3).

Figure 3 - Percentage of all providers of NHS funded acute care that met the NHS standard contract 95% or above



## Feedback

If you have any questions or comments about the planned changes to the VTE data collection outlined in this note, please contact the Outcomes Analysis Team by **FRIDAY 13<sup>th</sup> FEBRUARY** either via email at [england.vte@nhs.net](mailto:england.vte@nhs.net) or by writing to the Outcomes Analysis Team, at:

NHS England  
3<sup>rd</sup> Floor Skipton House  
80 London Road  
London  
SE1 6LH

Date of issue: 6<sup>th</sup> January 2015  
Updated: 20<sup>th</sup> February 2015