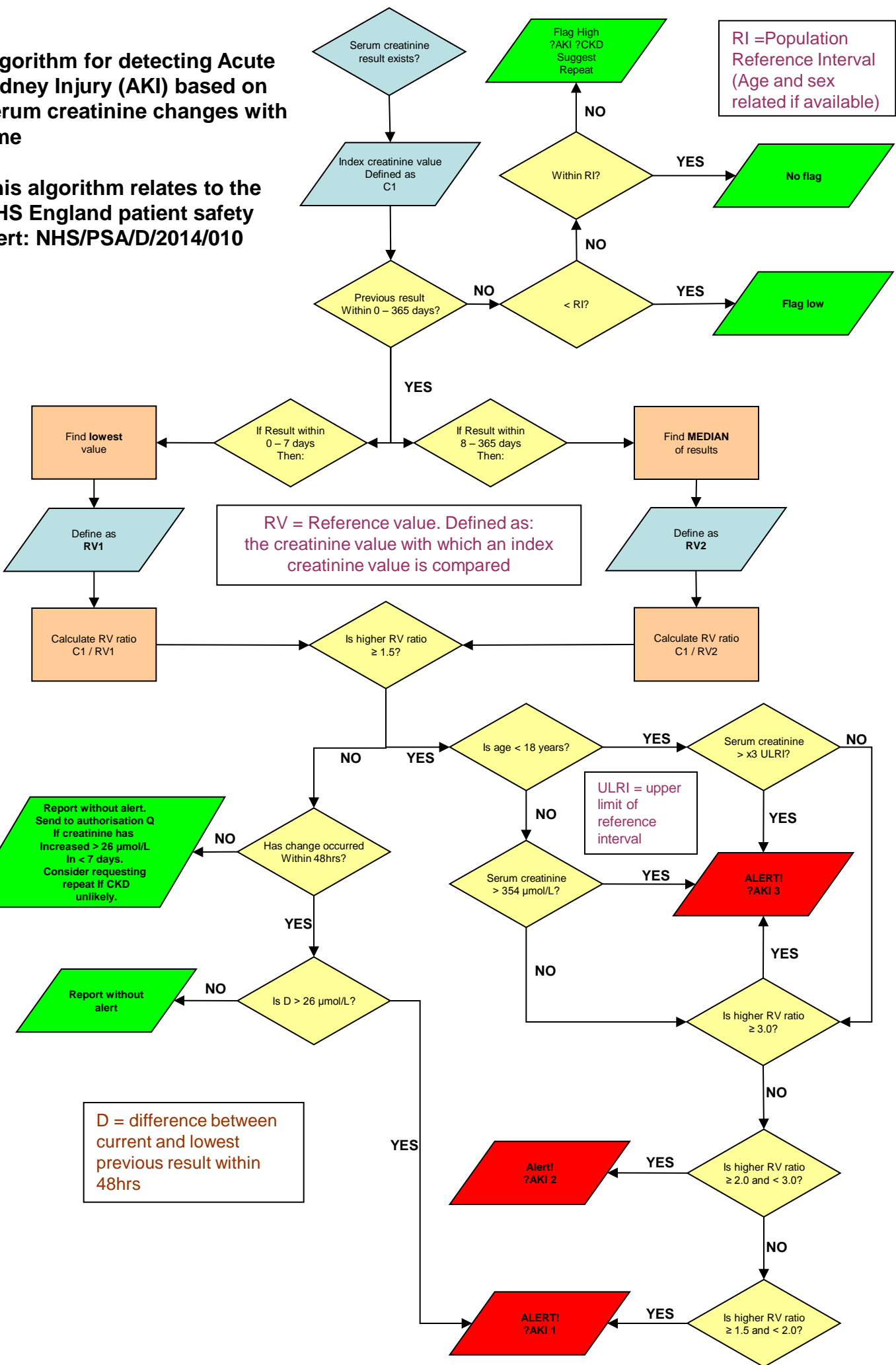


Algorithm for detecting Acute Kidney Injury (AKI) based on serum creatinine changes with time

This algorithm relates to the NHS England patient safety alert: NHS/PSA/D/2014/010

RI = Population Reference Interval (Age and sex related if available)



Acknowledgements

Algorithm for detecting Acute Kidney Injury (AKI) based on serum creatinine changes with time

**This algorithm relates to the NHS England patient safety alert:
NHS/PSA/D/2014/010**

Conceptual design: Members of the consensus group whose names and meeting report can be accessed on:

[http://www.acb.org.uk/docs/E-Alerts for AKI meeting statement](http://www.acb.org.uk/docs/E-Alerts_for_AKI_meeting_statement)

Graphic design: Robert Desborough, Mike Bosomworth, Robert Hill

