



IMMUNISATION-RELATED INCIDENTS

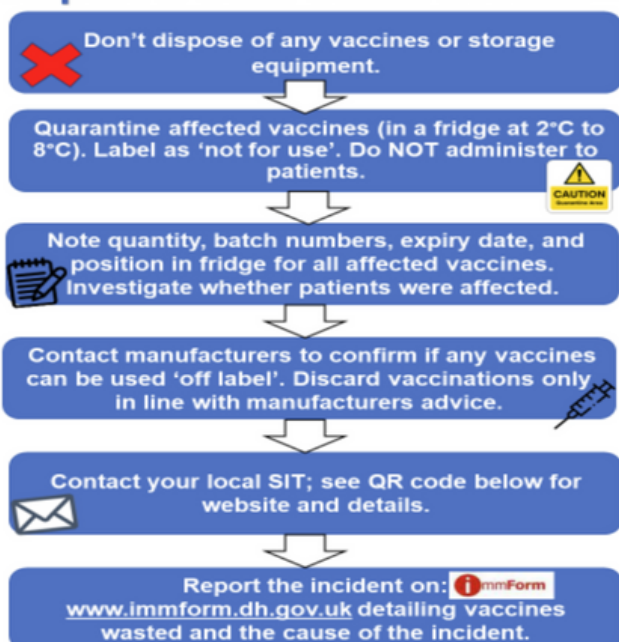


The Screening and Immunisation teams (SITs) are here to support you with any immunisation-related incidents. This includes any incidents with administration of immunisations ("immunisation incidents") or with storage and transporting immunisations ("cold chain breaches").

**** Only vaccines that have actually been discarded should be recorded on ImmForm****

Steps to take

Report a Cold Chain Breach NHS



Contacts

Details of incidents and any incident forms can be sent via e-mail to: england.eoe-vacprg@nhs.net (or you can send directly to your local SITs):

For East Anglia (C&P & N&W):
england.eaimms@nhs.net

For Essex (MSE & SNEE):
england.essexatimms@nhs.net

For HBLMK (BLMK & HWE):
england.immsga@nhs.net

Resources

[National Vaccine Incident Guidance](#)
[NHS England Incident Reporting Form](#)
[NHS England - East of England Cold Chain Policy](#)
[East of England Cold Chain Toolkit](#)
[SPS Stability Tool](#)
[Vaccines stored outside the recommended temperature leaflets](#)
[Off-label vaccines: leaflets](#)
[ImmForm website](#) (to report any vaccines that have been discarded)



The incident reporting process is intended to support you to avoid further errors, minimise waste, share learning and helps us support you in the future

