



IMMUNISATION-RELATED INCIDENTS

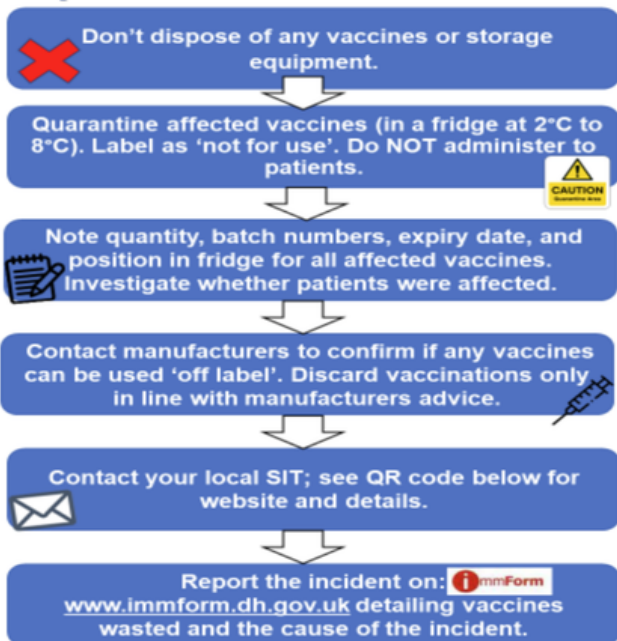


The Screening and Immunisation teams (SITs) are here to support you with any immunisation-related incidents. This includes any incidents with administration of immunisations (“immunisation incidents”) or with storage and transporting immunisations (“cold chain breaches”).

**** Only vaccines that have actually been discarded should be recorded on ImmForm****

Steps to take

Report a Cold Chain Breach NHS



Contacts

An incident should be reported by completing an incident form which will automatically be sent to your local SIT. Any incident forms using the previous MS Word version can be sent via e-mail to: england.eoe-vacprg@nhs.net

East Anglia SIT:
england.eaimms@nhs.net

Essex SIT:
england.essexatimms@nhs.net

HBLMK SIT: england.immsqa@nhs.net

Resources

- [National Vaccine Incident Guidance](#)
- [NHS England Incident Reporting e-Form](#)
- [NHS England - East of England Cold Chain Policy](#)
- [East of England Cold Chain Toolkit](#)
- [SPS Stability Tool](#)
- [Vaccines stored outside the recommended temperature leaflets](#)
- [Off-label vaccines: leaflets](#)
- [ImmForm website](#) (to report any vaccines that have been discarded)



The incident reporting process is intended to support you to avoid further errors, minimise waste, share learning and helps us support you in the future

