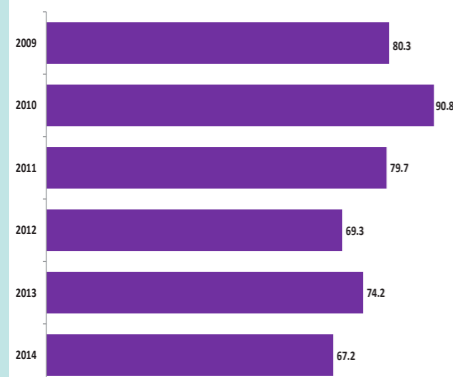


CVD PREMATURE MORTALITY

CVD PREMATURE MORTALITY

CCG Name	2014
LEICESTER CITY CCG	90.1
NOTTINGHAM CITY CCG	89.8
CORBY CCG	89.1
LINCOLNSHIRE WEST CCG	73.5
LINCOLNSHIRE EAST CCG	71.0
MANSFIELD AND ASHFIELD CCG	68.7
HARDWICK CCG	67.2
NEWARK AND SHERWOOD CCG	66.5
ENGLAND	63.7
NORTH DERBYSHIRE CCG	62.8
SOUTHERN DERBYSHIRE CCG	62.8
EREWASH CCG	62.2
NOTTINGHAM NORTH AND EAST CCG	61.3
SOUTH LINCOLNSHIRE CCG	60.8
NENE CCG	58.7
WEST LEICESTERSHIRE CCG	57.0
EAST LEICESTERSHIRE AND RUTLAND CCG	53.8
NOTTINGHAM WEST CCG	53.7
SOUTH WEST LINCOLNSHIRE CCG	49.0
RUSHCLIFFE CCG	35.7

CVD PREMATURE MORTALITY RATE 2009-2014



NUMBER OF PREMATURE DEATHS DUE TO CVD IN 2014

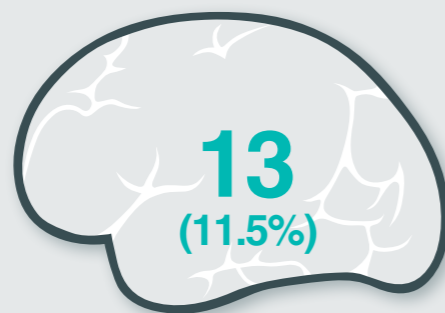
53

LEADING CAUSES OF YEARS OF LIFE LOST IN ENGLAND GLOBAL BURDEN OF DISEASE STUDY 2013

1	Ischaemic heart disease
2	Lung cancer
3	Cerebrovascular disease
4	COPD
5	Alzheimer's disease
11	Other cardiovascular

ATRIAL FIBRILLATION

STROKE ADMISSIONS WITH KNOWN AF 2014-15



NUMBER OF UNDIAGNOSED AF PATIENTS...

461

% observed to expected AF prevalence

69%

90

High risk AF patients **NOT** on anticoagulation (17.2%)

*includes exception reported

CCG EXCEPTION REPORTING FOR ANTICOAGULATION

10.7%

PRACTICE RANGE OF EXCEPTION REPORTING



BLOOD PRESSURE

NUMBER OF PEOPLE WITH UNDIAGNOSED HYPERTENSION



51% observed to expected HYPERTENSION PREVALENCE
Actual = 12.0%
Estimated = 23.7%

1,425

Hypertensive patients with BP **NOT TO** QOF target 150/90 (16.1%)

*includes exception reported

CHRONIC KIDNEY DISEASE

NUMBER OF PEOPLE WITH UNDIAGNOSED CKD



77% observed to expected CKD PREVALENCE
Actual = 4.0%
Estimated = 5.5%

437

CKD patients with BP **NOT TO** QOF target 140/85 (19.3%)

*includes exception reported

FAMILIAL HYPERCHOLESTEROLEMIA (FH)

HEART ATTACKS IN PEOPLE UNDER 50 - 2012-13 to 2014/15



Estimated people with FH
147 - 294
Rate = 1 per 500 Rate = 1 per 250

Estimated 15% diagnosed with FH
22 - 44
Rate = 1 per 500 Rate = 1 per 250

SMOKING DATA BY LOCAL AUTHORITY

Local Authority	Smoking Prevalence in adults - current smokers (2014)	Smoking prevalence in adults in routine and manual occupations - current smokers (2014)	Successful quitters at 4 weeks per 100,000 smokers (2014-15)
Derby	18.7	33.1	1,351
Derbyshire	19.9	31.5	1,559
Leicester	20.7	28.9	3,214
Leicestershire	17.0	28.9	3,052
Rutland	14.1	29.6	2,456
Lincolnshire	17.5	25.6	3,567
Northamptonshire	19.3	32.0	2,396
Nottingham	24.2	28.1	2,804
Nottinghamshire	17.5	27.8	3,256
East Midlands	18.8	29.2	2,727

Better Similar Worse Compared to England average

HEART FAILURE

HEART FAILURE PATIENTS WITH LVSD

March 2014	103
March 2015	143

HEART FAILURE ADMISSIONS

Admissions	2013-14	2014-15
Primary Diagnosis#	98	90
Secondary Diagnosis	363	434

Admission Costs	2013-14	2014-15
Primary Diagnosis#	£355,000	£302,000
Secondary Diagnosis	£1,274,000	£1,242,000

Admission Rate per 1000 HF Patients	2014-15	E.Mids Av
Primary Diagnosis#	154	179
Secondary Diagnosis	741	749

42 Heart Failure LVSD patients **NOT** on dual therapy ACE inhibitor/ARB and a betablocker (29.4%)

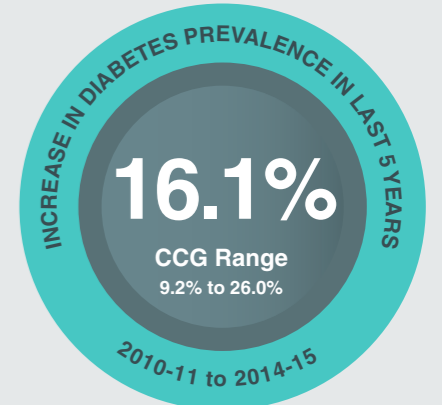
DIABETIC FOOT AMPUTATIONS

	Number	Rate per 1000 diabetic patients
Total	21	2.52
Major	12	1.44
Minor	9	1.08

	Number	Rate per 1000 diabetic patients
Total	20	2.08
Major	9	0.93
Minor	11	1.1

East Midlands Rate in 2011 - 2014
Total - 2.37 Major - 0.82 Minor - 1.55

DIABETES



80% Practice Participation in National Diabetes Audit 2014-15

8 CARE PROCESSES 2014-15

TYPE 1 - 54.0%
England = 39.6%
E.Mids CCG Range = 29.3 - 54.0%

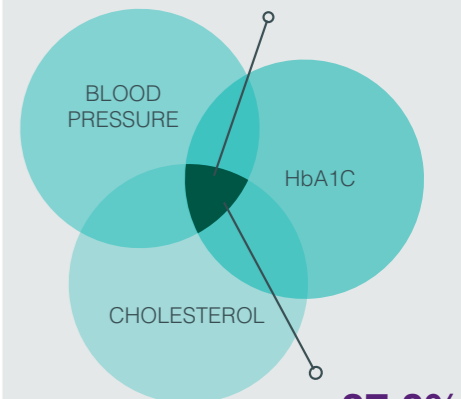
Lowest 8 Care Process
70.9% Urine Albumin

TYPE 2 - 62.3%
England = 59.0%
E.Mids CCG Range = 51.2 - 73.8%

Lowest 8 Care Process
79.6% BMI

% OF DIABETIC PATIENTS MEETING 3 TARGETS 2014-15

TYPE 1 - 19.8%
England = 19.3%
E.Mids CCG Range = 14.6 - 28.5%



TYPE 2 - 37.0%
England = 41.3%
E.Mids CCG Range = 35.6 - 44.6%

CVD PREMATURE MORTALITY

CVD PREMATURE MORTALITY

CCG Name	2014
LEICESTER CITY CCG	90.1
NOTTINGHAM CITY CCG	89.8
CORBY CCG	89.1
LINCOLNSHIRE WEST CCG	73.5
LINCOLNSHIRE EAST CCG	71.0
MANSFIELD AND ASHFIELD CCG	68.7
HARDWICK CCG	67.2
NEWARK AND SHERWOOD CCG	66.5
ENGLAND	63.7
NORTH DERBYSHIRE CCG	62.8
SOUTHERN DERBYSHIRE CCG	62.8
EREWASH CCG	62.2
NOTTINGHAM NORTH AND EAST CCG	61.3
SOUTH LINCOLNSHIRE CCG	60.8
NENE CCG	58.7
WEST LEICESTERSHIRE CCG	57.0
EAST LEICESTERSHIRE AND RUTLAND CCG	53.8
NOTTINGHAM WEST CCG	53.7
SOUTH WEST LINCOLNSHIRE CCG	49.0
RUSHCLIFFE CCG	35.7

CVD PREMATURE MORTALITY RATE 2009-2014



NUMBER OF PREMATURE DEATHS DUE TO CVD IN 2014

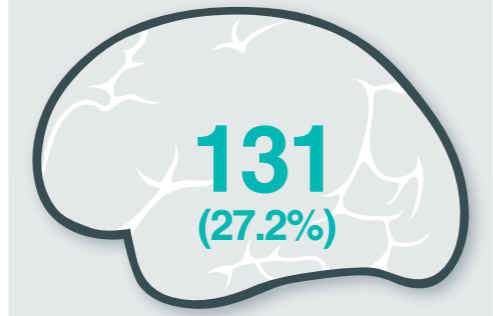
183

LEADING CAUSES OF YEARS OF LIFE LOST IN ENGLAND GLOBAL BURDEN OF DISEASE STUDY 2013

1	Ischaemic heart disease
2	Lung cancer
3	Cerebrovascular disease
4	COPD
5	Alzheimer's disease
11	Other cardiovascular

ATRIAL FIBRILLATION

STROKE ADMISSIONS WITH KNOWN AF 2014-15



NUMBER OF UNDIAGNOSED AF PATIENTS...

2,788
% observed to expected AF prevalence

70%

876
High risk AF patients NOT on anticoagulation (24.4%)

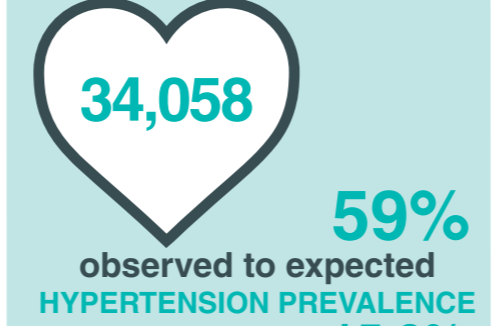
*includes exception reported
CCG EXCEPTION REPORTING FOR ANTICOAGULATION

11.4%
PRACTICE RANGE OF EXCEPTION REPORTING



BLOOD PRESSURE

NUMBER OF PEOPLE WITH UNDIAGNOSED HYPERTENSION



59% observed to expected
HYPERTENSION PREVALENCE
Actual = **15.0%**
Estimated = **25.6%**
9,604
Hypertensive patients with BP NOT TO QOF target 150/90 (19.8%)

*includes exception reported

CHRONIC KIDNEY DISEASE

NUMBER OF PEOPLE WITH UNDIAGNOSED CKD



58% observed to expected
CKD PREVALENCE
Actual = **4.0%**
Estimated = **7.4%**
2,664
CKD patients with BP NOT TO QOF target 140/85 (25.7%)

*includes exception reported

FAMILIAL HYPERCHOLESTEROLEMIA (FH)

HEART ATTACKS IN PEOPLE UNDER 50 - 2012-13 to 2014/15



Estimated people with FH
645 - 1,290
Rate = 1 per 500 Rate = 1 per 250

Estimated **15%** diagnosed with FH
97 - 193
Rate = 1 per 500 Rate = 1 per 250

SMOKING DATA BY LOCAL AUTHORITY

Local Authority	Smoking Prevalence in adults - current smokers (2014)	Smoking prevalence in adults in routine and manual occupations - current smokers (2014)	Successful quitters at 4 weeks per 100,000 smokers (2014-15)
Derby	18.7	33.1	1,351
Derbyshire	19.9	31.5	1,559
Leicester	20.7	28.9	3,214
Leicestershire	17.0	28.9	3,052
Rutland	14.1	29.6	2,456
Lincolnshire	17.5	25.6	3,567
Northamptonshire	19.3	32.0	2,396
Nottingham	24.2	28.1	2,804
Nottinghamshire	17.5	27.8	3,256
East Midlands	18.8	29.2	2,727

Better Similar Worse Compared to England average

HEART FAILURE

HEART FAILURE PATIENTS WITH LVSD

March 2014	370
March 2015	408

HEART FAILURE ADMISSIONS

Admissions	2013-14	2014-15
Primary Diagnosis#	396	409
Secondary Diagnosis	1,463	1,761

Admission Costs	2013-14	2014-15
Primary Diagnosis#	£1,331,000	£1,301,000
Secondary Diagnosis	£4,615,000	£5,140,000

Admission Rate per 1000 HF Patients	2014-15	E.Mids Av
Primary Diagnosis#	159	179
Secondary Diagnosis	683	749

137 Heart Failure LVSD patients NOT on dual therapy ACE inhibitor/ARB and a betablocker (**33.6%**)

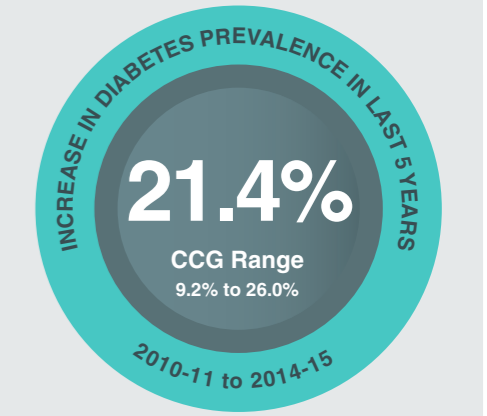
DIABETIC FOOT AMPUTATIONS

APRIL 2010 - MARCH 2013		Rate per 1000 diabetic patients
Total	86	1.95
Major	30	0.68
Minor	56	1.27

APRIL 2011 - MARCH 2014		Rate per 1000 diabetic patients
Total	92	1.95
Major	31	0.66
Minor	61	1.3

East Midlands Rate in 2011 - 2014
Total - 2.37 Major - 0.82 Minor - 1.55

DIABETES



33% Practice Participation in National Diabetes Audit 2014-15

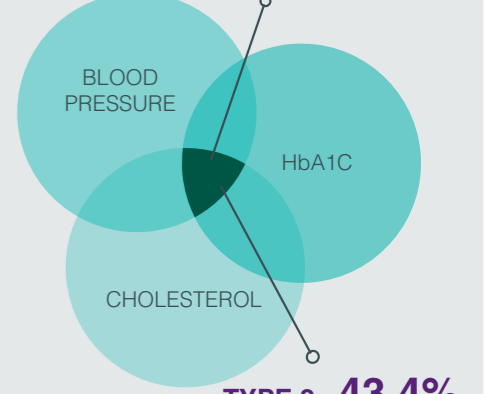
8 CARE PROCESSES 2014-15

TYPE 1 - 35.0%
England = 39.6%
E.Mids CCG Range = 29.3 - 54.0%
Lowest 8 Care Process
56.5% Urine Albumin

TYPE 2 - 59.2%
England = 59.0%
E.Mids CCG Range = 51.2 - 73.8%
Lowest 8 Care Process
80.4% Urine Albumin

% OF DIABETIC PATIENTS MEETING 3 TARGETS 2014-15

TYPE 1 - 24.5%
England = 19.3%
E.Mids CCG Range = 14.6 - 28.5%



CARDIOVASCULAR DISEASE PREVENTION INFOGRAPHIC

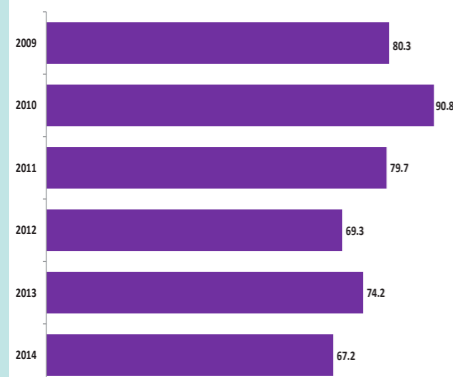
EREWASH CCG

CVD PREMATURE MORTALITY

CVD PREMATURE MORTALITY

CCG Name	2014
LEICESTER CITY CCG	90.1
NOTTINGHAM CITY CCG	89.8
CORBY CCG	89.1
LINCOLNSHIRE WEST CCG	73.5
LINCOLNSHIRE EAST CCG	71.0
MANSFIELD AND ASHFIELD CCG	68.7
HARDWICK CCG	67.2
NEWARK AND SHERWOOD CCG	66.5
ENGLAND	63.7
NORTH DERBYSHIRE CCG	62.8
SOUTHERN DERBYSHIRE CCG	62.8
EREWASH CCG	62.2
NOTTINGHAM NORTH AND EAST CCG	61.3
SOUTH LINCOLNSHIRE CCG	60.8
NENE CCG	58.7
WEST LEICESTERSHIRE CCG	57.0
EAST LEICESTERSHIRE AND RUTLAND CCG	53.8
NOTTINGHAM WEST CCG	53.7
SOUTH WEST LINCOLNSHIRE CCG	49.0
RUSHCLIFFE CCG	35.7

CVD PREMATURE MORTALITY RATE 2009-2014



NUMBER OF PREMATURE DEATHS DUE TO CVD IN 2014

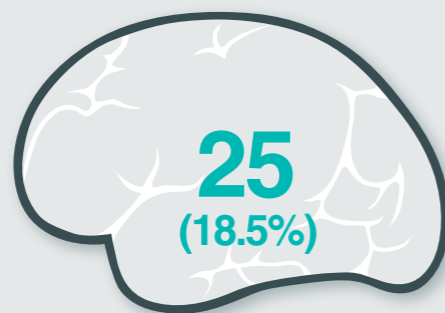
61

LEADING CAUSES OF YEARS OF LIFE LOST IN ENGLAND GLOBAL BURDEN OF DISEASE STUDY 2013

1	Ischaemic heart disease
2	Lung cancer
3	Cerebrovascular disease
4	COPD
5	Alzheimer's disease
11	Other cardiovascular

ATRIAL FIBRILLATION

STROKE ADMISSIONS WITH KNOWN AF 2014-15



NUMBER OF UNDIAGNOSED AF PATIENTS...

763

% observed to expected AF prevalence

70%

285

High risk AF patients **NOT** on anticoagulation **(28.8%)**

*includes exception reported

CCG EXCEPTION REPORTING FOR ANTICOAGULATION

14.0%

PRACTICE RANGE OF EXCEPTION REPORTING



BLOOD PRESSURE

NUMBER OF PEOPLE WITH UNDIAGNOSED HYPERTENSION



60% observed to expected **HYPERTENSION PREVALENCE**
Actual = **15.8%**
Estimated = **26.5%**

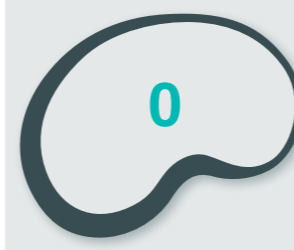
2,628

Hypertensive patients with BP **NOT TO** QOF target 150/90 **(17.1%)**

*includes exception reported

CHRONIC KIDNEY DISEASE

NUMBER OF PEOPLE WITH UNDIAGNOSED CKD



109% observed to expected **CKD PREVALENCE**
Actual = **6.9%**
Estimated = **6.7%**

1,406

CKD patients with BP **NOT TO** QOF target 140/85 **(26.1%)**

*includes exception reported

FAMILIAL HYPERCHOLESTEROLEMIA (FH)

HEART ATTACKS IN PEOPLE UNDER 50 - 2012-13 to 2014/15



Estimated people with FH **195 - 389**
Rate = 1 per 500 Rate = 1 per 250

Estimated **15%** diagnosed with FH
29 - 58
Rate = 1 per 500 Rate = 1 per 250

SMOKING DATA BY LOCAL AUTHORITY

Local Authority	Smoking Prevalence in adults - current smokers (2014)	Smoking prevalence in adults in routine and manual occupations - current smokers (2014)	Successful quitters at 4 weeks per 100,000 smokers (2014-15)
Derby	18.7	33.1	1,351
Derbyshire	19.9	31.5	1,559
Leicester	20.7	28.9	3,214
Leicestershire	17.0	28.9	3,052
Rutland	14.1	29.6	2,456
Lincolnshire	17.5	25.6	3,567
Northamptonshire	19.3	32.0	2,396
Nottingham	24.2	28.1	2,804
Nottinghamshire	17.5	27.8	3,256
East Midlands	18.8	29.2	2,727

Better Similar Worse Compared to England average

HEART FAILURE

HEART FAILURE PATIENTS WITH LVSD

March 2014	151
March 2015	157

HEART FAILURE ADMISSIONS

Admissions	2013-14	2014-15
Primary Diagnosis#	111	119
Secondary Diagnosis	425	521

Admission Costs	2013-14	2014-15
Primary Diagnosis#	£333,000	£395,000
Secondary Diagnosis	£1,345,000	£1,651,000

Admission Rate per 1000 HF Patients	2014-15	E.Mids Av
Primary Diagnosis#	172	179
Secondary Diagnosis	753	749

61 Heart Failure LVSD patients **NOT** on dual therapy ACE inhibitor/ARB and a betablocker **(38.9%)**

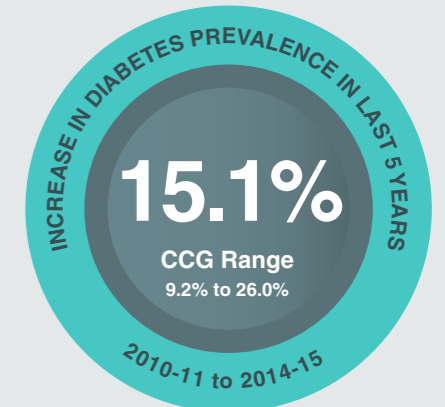
DIABETIC FOOT AMPUTATIONS

APRIL 2010 - MARCH 2013		Rate per 1000 diabetic patients
Total	Number	
Total	35	2.42
Major	12	0.83
Minor	23	1.59

APRIL 2011 - MARCH 2014		Rate per 1000 diabetic patients
Total	Number	
Total	42	2.79
Major	16	1.06
Minor	26	1.7

East Midlands Rate in 2011 - 2014
Total - 2.37 Major - 0.82 Minor - 1.55

DIABETES



67% Practice Participation in National Diabetes Audit 2014-15

8 CARE PROCESSES 2014-15

TYPE 1 - 30.5%
England = 39.6%
E.Mids CCG Range = 29.3 - 54.0%

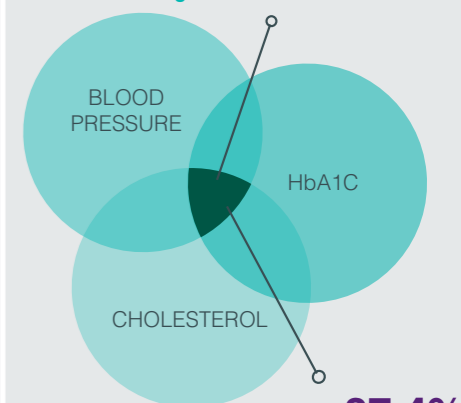
Lowest 8 Care Process
48.1% Urine Albumin

TYPE 2 - 70.9%
England = 59.0%
E.Mids CCG Range = 51.2 - 73.8%

Lowest 8 Care Process
86.6% Urine Albumin

% OF DIABETIC PATIENTS MEETING 3 TARGETS 2014-15

TYPE 1 - 16.7%
England = 19.3%
E.Mids CCG Range = 14.6 - 28.5%



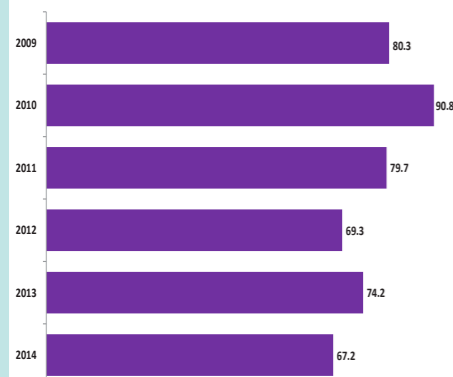
CARDIOVASCULAR DISEASE PREVENTION INFOGRAPHIC

CVD PREMATURE MORTALITY

CVD PREMATURE MORTALITY

CCG Name	2014
LEICESTER CITY CCG	90.1
NOTTINGHAM CITY CCG	89.8
CORBY CCG	89.1
LINCOLNSHIRE WEST CCG	73.5
LINCOLNSHIRE EAST CCG	71.0
MANSFIELD AND ASHFIELD CCG	68.7
HARDWICK CCG	67.2
NEWARK AND SHERWOOD CCG	66.5
ENGLAND	63.7
NORTH DERBYSHIRE CCG	62.8
SOUTHERN DERBYSHIRE CCG	62.8
EREWASH CCG	62.2
NOTTINGHAM NORTH AND EAST CCG	61.3
SOUTH LINCOLNSHIRE CCG	60.8
NENE CCG	58.7
WEST LEICESTERSHIRE CCG	57.0
EAST LEICESTERSHIRE AND RUTLAND CCG	53.8
NOTTINGHAM WEST CCG	53.7
SOUTH WEST LINCOLNSHIRE CCG	49.0
RUSHCLIFFE CCG	35.7

CVD PREMATURE MORTALITY RATE 2009-2014



NUMBER OF PREMATURE DEATHS DUE TO CVD IN 2014

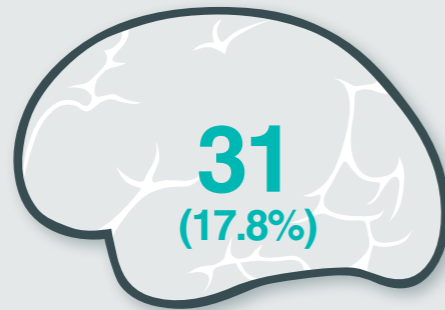
73

LEADING CAUSES OF YEARS OF LIFE LOST IN ENGLAND GLOBAL BURDEN OF DISEASE STUDY 2013

1	Ischaemic heart disease
2	Lung cancer
3	Cerebrovascular disease
4	COPD
5	Alzheimer's disease
11	Other cardiovascular

ATRIAL FIBRILLATION

STROKE ADMISSIONS WITH KNOWN AF 2014-15



NUMBER OF UNDIAGNOSED AF PATIENTS...

839

% observed to expected AF prevalence

71%

264

High risk AF patients NOT on anticoagulation (22.8%)

*includes exception reported

CCG EXCEPTION REPORTING FOR ANTICOAGULATION

14.8%

PRACTICE RANGE OF EXCEPTION REPORTING



BLOOD PRESSURE

NUMBER OF PEOPLE WITH UNDIAGNOSED HYPERTENSION



64% observed to expected HYPERTENSION PREVALENCE

Actual = **17.9%**

Estimated = **27.9%**

3,609

Hypertensive patients with BP NOT TO QOF target 150/90 (19.7%)

*includes exception reported

CHRONIC KIDNEY DISEASE

NUMBER OF PEOPLE WITH UNDIAGNOSED CKD



80% observed to expected CKD PREVALENCE

Actual = **5.5%**

Estimated = **7.1%**

1,219

CKD patients with BP NOT TO QOF target 140/85 (27.1%)

*includes exception reported

FAMILIAL HYPERCHOLESTEROLEMIA (FH)

HEART ATTACKS IN PEOPLE UNDER 50 - 2012-13 to 2014/15



Estimated people with FH **205 - 410**
Rate = 1 per 500 Rate = 1 per 250

Estimated **15%** diagnosed with FH
31 - 61
Rate = 1 per 500 Rate = 1 per 250

SMOKING DATA BY LOCAL AUTHORITY

Local Authority	Smoking Prevalence in adults - current smokers (2014)	Smoking prevalence in adults in routine and manual occupations - current smokers (2014)	Successful quitters at 4 weeks per 100,000 smokers (2014-15)
Derby	18.7	33.1	1,351
Derbyshire	19.9	31.5	1,559
Leicester	20.7	28.9	3,214
Leicestershire	17.0	28.9	3,052
Rutland	14.1	29.6	2,456
Lincolnshire	17.5	25.6	3,567
Northamptonshire	19.3	32.0	2,396
Nottingham	24.2	28.1	2,804
Nottinghamshire	17.5	27.8	3,256
East Midlands	18.8	29.2	2,727

Better Similar Worse Compared to England average

HEART FAILURE

HEART FAILURE PATIENTS WITH LVSD

March 2014	276
March 2015	287

HEART FAILURE ADMISSIONS

Admissions	2013-14	2014-15
Primary Diagnosis#	149	165
Secondary Diagnosis	666	876

Admission Costs	2013-14	2014-15
Primary Diagnosis#	£442,000	£521,000
Secondary Diagnosis	£1,962,000	£2,388,000

Admission Rate per 1000 HF Patients	2014-15	E.Mids Av
Primary Diagnosis#	163	179
Secondary Diagnosis	864	749

92 Heart Failure LVSD patients NOT on dual therapy ACE inhibitor/ARB and a betablocker (**32.1%**)

DIABETIC FOOT AMPUTATIONS

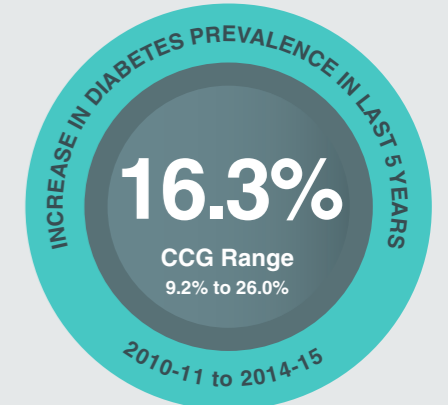
APRIL 2010 - MARCH 2013		Rate per 1000 diabetic patients
Total	55	2.95
Major	13	0.70
Minor	42	2.25

APRIL 2011 - MARCH 2014		Rate per 1000 diabetic patients
Total	57	2.93
Major	12	0.62
Minor	45	2.3

East Midlands Rate in 2011 - 2014
Total - 2.37 Major - 0.82 Minor - 1.55

HARDWICK CCG

DIABETES



80% Practice Participation in National Diabetes Audit 2014-15

8 CARE PROCESSES 2014-15

TYPE 1 - 35.8%
England = 39.6%
E.Mids CCG Range = 29.3 - 54.0%

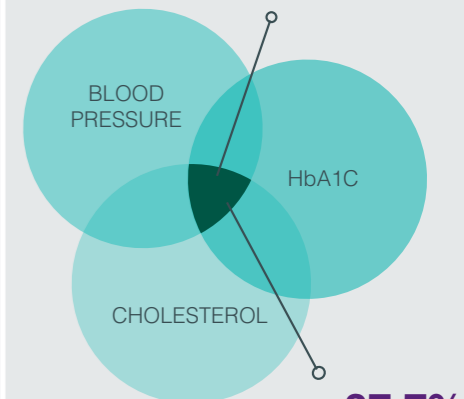
Lowest 8 Care Process
58.6% Urine Albumin

TYPE 2 - 52.4%
England = 59.0%
E.Mids CCG Range = 51.2 - 73.8%

Lowest 8 Care Process
74.9% BMI

% OF DIABETIC PATIENTS MEETING 3 TARGETS 2014-15

TYPE 1 - 15.5%
England = 19.3%
E.Mids CCG Range = 14.6 - 28.5%

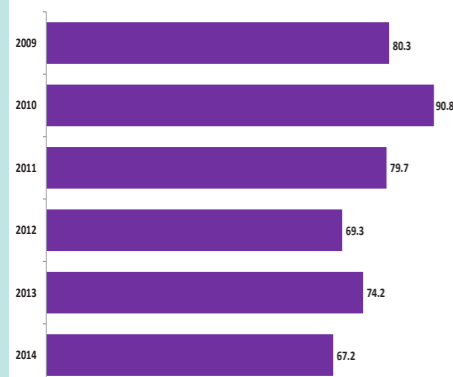


CVD PREMATURE MORTALITY

CVD PREMATURE MORTALITY

CCG Name	2014
LEICESTER CITY CCG	90.1
NOTTINGHAM CITY CCG	89.8
CORBY CCG	89.1
LINCOLNSHIRE WEST CCG	73.5
LINCOLNSHIRE EAST CCG	71.0
MANSFIELD AND ASHFIELD CCG	68.7
HARDWICK CCG	67.2
NEWARK AND SHERWOOD CCG	66.5
ENGLAND	63.7
NORTH DERBYSHIRE CCG	62.8
SOUTHERN DERBYSHIRE CCG	62.8
EREWASH CCG	62.2
NOTTINGHAM NORTH AND EAST CCG	61.3
SOUTH LINCOLNSHIRE CCG	60.8
NENE CCG	58.7
WEST LEICESTERSHIRE CCG	57.0
EAST LEICESTERSHIRE AND RUTLAND CCG	53.8
NOTTINGHAM WEST CCG	53.7
SOUTH WEST LINCOLNSHIRE CCG	49.0
RUSHCLIFFE CCG	35.7

CVD PREMATURE MORTALITY RATE 2009-2014



NUMBER OF PREMATURE DEATHS DUE TO CVD IN 2014

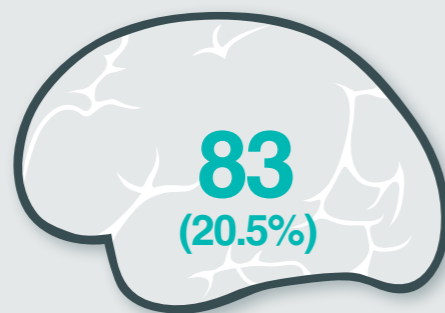
223

LEADING CAUSES OF YEARS OF LIFE LOST IN ENGLAND GLOBAL BURDEN OF DISEASE STUDY 2013

1	Ischaemic heart disease
2	Lung cancer
3	Cerebrovascular disease
4	COPD
5	Alzheimer's disease
11	Other cardiovascular

ATRIAL FIBRILLATION

STROKE ADMISSIONS WITH KNOWN AF 2014-15



NUMBER OF UNDIAGNOSED AF PATIENTS...

2,973

% observed to expected AF prevalence

54%

484

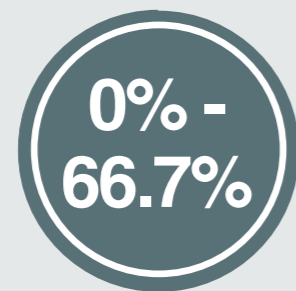
High risk AF patients NOT on anticoagulation (22.2%)

*includes exception reported

CCG EXCEPTION REPORTING FOR ANTICOAGULATION

12.9%

PRACTICE RANGE OF EXCEPTION REPORTING



BLOOD PRESSURE

NUMBER OF PEOPLE WITH UNDIAGNOSED HYPERTENSION



55% observed to expected HYPERTENSION PREVALENCE

Actual = 11.8%

Estimated = 21.3%

9,214

Hypertensive patients with BP NOT TO QOF target 150/90 (20.5%)

*includes exception reported

CHRONIC KIDNEY DISEASE

NUMBER OF PEOPLE WITH UNDIAGNOSED CKD



55% observed to expected CKD PREVALENCE

Actual = 2.8%

Estimated = 4.8%

2,048

CKD patients with BP NOT TO QOF target 140/85 (25.2%)

*includes exception reported

FAMILIAL HYPERCHOLESTEROLEMIA (FH)

HEART ATTACKS IN PEOPLE UNDER 50 - 2012-13 to 2014/15



Estimated people with FH 763 - 1,526
Rate = 1 per 500 Rate = 1 per 250

Estimated 15% diagnosed with FH 114 - 229
Rate = 1 per 500 Rate = 1 per 250

SMOKING DATA BY LOCAL AUTHORITY

Local Authority	Smoking Prevalence in adults - current smokers (2014)	Smoking prevalence in adults in routine and manual occupations - current smokers (2014)	Successful quitters at 4 weeks per 100,000 smokers (2014-15)
Derby	18.7	33.1	1,351
Derbyshire	19.9	31.5	1,559
Leicester	20.7	28.9	3,214
Leicestershire	17.0	28.9	3,052
Rutland	14.1	29.6	2,456
Lincolnshire	17.5	25.6	3,567
Northamptonshire	19.3	32.0	2,396
Nottingham	24.2	28.1	2,804
Nottinghamshire	17.5	27.8	3,256
East Midlands	18.8	29.2	2,727

Better Similar Worse Compared to England average

HEART FAILURE

HEART FAILURE PATIENTS WITH LVSD

March 2014	596
March 2015	691

HEART FAILURE ADMISSIONS

Admissions	2013-14	2014-15
Primary Diagnosis#	432	507
Secondary Diagnosis	1,386	1,862

Admission Costs	2013-14	2014-15
Primary Diagnosis#	£1,406,000	£1,701,000
Secondary Diagnosis	£4,245,000	£5,345,000

Admission Rate per 1000 HF Patients	2014-15	E.Mids Av
Primary Diagnosis#	197	179
Secondary Diagnosis	722	749

221 Heart Failure LVSD patients NOT on dual therapy ACE inhibitor/ARB and a betablocker (32%)

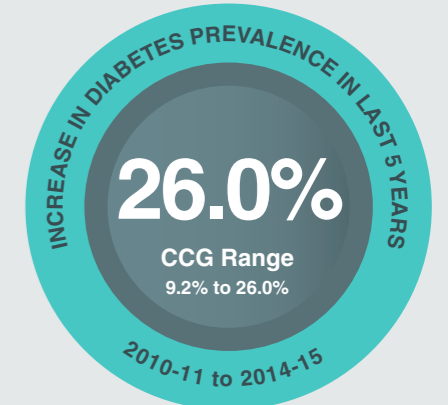
DIABETIC FOOT AMPUTATIONS

APRIL 2010 - MARCH 2013		Rate per 1000 diabetic patients
Total	Number	
Total	107	1.63
Major	34	0.52
Minor	73	1.11

APRIL 2011 - MARCH 2014		Rate per 1000 diabetic patients
Total	Number	
Total	113	1.58
Major	37	0.52
Minor	76	1.1

East Midlands Rate in 2011 - 2014 Total - 2.37 Major - 0.82 Minor - 1.55

DIABETES



40% Practice Participation in National Diabetes Audit 2014-15

8 CARE PROCESSES 2014-15

TYPE 1 - 34.5%
England = 39.6%
E.Mids CCG Range = 29.3 - 54.0%

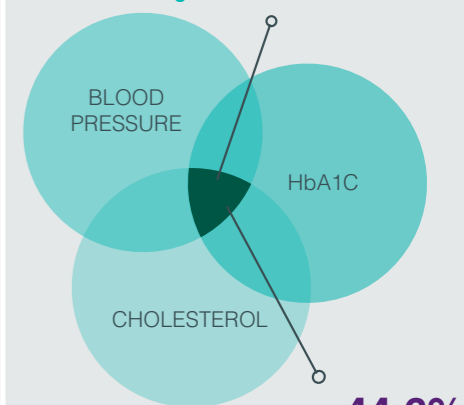
Lowest 8 Care Process 56.6% Urine Albumin

TYPE 2 - 51.2%
England = 59.0%
E.Mids CCG Range = 51.2 - 73.8%

Lowest 8 Care Process 73.8% Urine Albumin

% OF DIABETIC PATIENTS MEETING 3 TARGETS 2014-15

TYPE 1 - 28.5%
England = 19.3%
E.Mids CCG Range = 14.6 - 28.5%



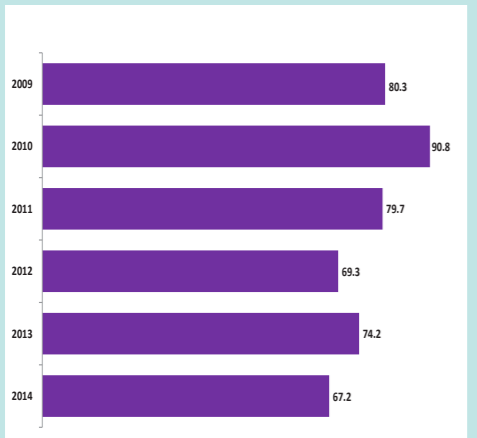
TYPE 2 - 44.6%
England = 41.3%
E.Mids CCG Range = 35.6 - 44.6%

CVD PREMATURE MORTALITY

CVD PREMATURE MORTALITY

CCG Name	2014
LEICESTER CITY CCG	90.1
NOTTINGHAM CITY CCG	89.8
CORBY CCG	89.1
LINCOLNSHIRE WEST CCG	73.5
LINCOLNSHIRE EAST CCG	71.0
MANSFIELD AND ASHFIELD CCG	68.7
HARDWICK CCG	67.2
NEWARK AND SHERWOOD CCG	66.5
ENGLAND	63.7
NORTH DERBYSHIRE CCG	62.8
SOUTHERN DERBYSHIRE CCG	62.8
EREWASH CCG	62.2
NOTTINGHAM NORTH AND EAST CCG	61.3
SOUTH LINCOLNSHIRE CCG	60.8
NENE CCG	58.7
WEST LEICESTERSHIRE CCG	57.0
EAST LEICESTERSHIRE AND RUTLAND CCG	53.8
NOTTINGHAM WEST CCG	53.7
SOUTH WEST LINCOLNSHIRE CCG	49.0
RUSHCLIFFE CCG	35.7

CVD PREMATURE MORTALITY RATE 2009-2014



NUMBER OF PREMATURE DEATHS DUE TO CVD IN 2014

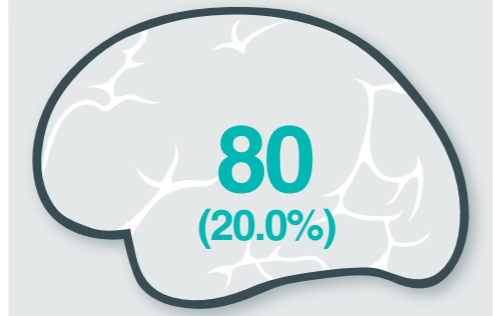
215

LEADING CAUSES OF YEARS OF LIFE LOST IN ENGLAND GLOBAL BURDEN OF DISEASE STUDY 2013

1	Ischaemic heart disease
2	Lung cancer
3	Cerebrovascular disease
4	COPD
5	Alzheimer's disease
11	Other cardiovascular

ATRIAL FIBRILLATION

STROKE ADMISSIONS WITH KNOWN AF 2014-15



NUMBER OF UNDIAGNOSED AF PATIENTS...

2,330
% observed to expected AF prevalence

71%

732
High risk AF patients NOT on anticoagulation (24.2%)

*includes exception reported
CCG EXCEPTION REPORTING FOR ANTICOAGULATION

10.8%
PRACTICE RANGE OF EXCEPTION REPORTING



BLOOD PRESSURE

NUMBER OF PEOPLE WITH UNDIAGNOSED HYPERTENSION



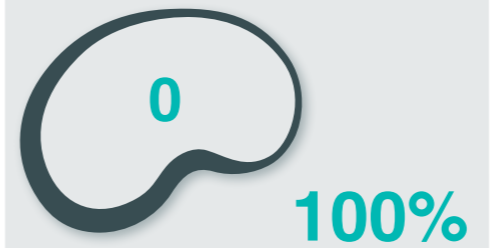
57% observed to expected
HYPERTENSION PREVALENCE
Actual = 17.6%
Estimated = 30.7%

7,964
Hypertensive patients with BP NOT TO QOF target 150/90 (18.5%)

*includes exception reported

CHRONIC KIDNEY DISEASE

NUMBER OF PEOPLE WITH UNDIAGNOSED CKD



100% observed to expected
CKD PREVALENCE
Actual = 7.9%
Estimated = 8.4%

3,906
CKD patients with BP NOT TO QOF target 140/85 (24.8%)

*includes exception reported

FAMILIAL HYPERCHOLESTEROLEMIA (FH)

HEART ATTACKS IN PEOPLE UNDER 50 - 2012-13 to 2014/15



Estimated people with FH
490 - 980
Rate = 1 per 500 Rate = 1 per 250

Estimated **15%** diagnosed with FH
73 - 147
Rate = 1 per 500 Rate = 1 per 250

SMOKING DATA BY LOCAL AUTHORITY

Local Authority	Smoking Prevalence in adults - current smokers (2014)	Smoking prevalence in adults in routine and manual occupations - current smokers (2014)	Successful quitters at 4 weeks per 100,000 smokers (2014-15)
Derby	18.7	33.1	1,351
Derbyshire	19.9	31.5	1,559
Leicester	20.7	28.9	3,214
Leicestershire	17.0	28.9	3,052
Rutland	14.1	29.6	2,456
Lincolnshire	17.5	25.6	3,567
Northamptonshire	19.3	32.0	2,396
Nottingham	24.2	28.1	2,804
Nottinghamshire	17.5	27.8	3,256
East Midlands	18.8	29.2	2,727

Better Similar Worse Compared to England average

HEART FAILURE

HEART FAILURE PATIENTS WITH LVSD

March 2014	509
March 2015	548

HEART FAILURE ADMISSIONS

Admissions	2013-14	2014-15
Primary Diagnosis#	390	400
Secondary Diagnosis	1,742	1,693

Admission Costs	2013-14	2014-15
Primary Diagnosis#	£1,331,000	£1,334,000
Secondary Diagnosis	£5,312,000	£5,259,000

Admission Rate per 1000 HF Patients	2014-15	E.Mids Av
Primary Diagnosis#	158	179
Secondary Diagnosis	668	749

182 Heart Failure LVSD patients NOT on dual therapy ACE inhibitor/ARB and a betablocker (33.2%)

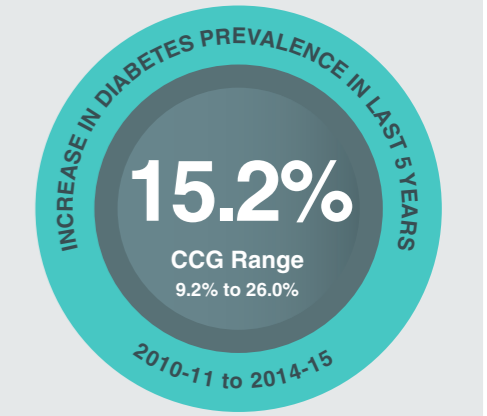
DIABETIC FOOT AMPUTATIONS

APRIL 2010 - MARCH 2013		Rate per 1000 diabetic patients
Total	133	2.87
Major	50	1.08
Minor	83	1.79

APRIL 2011 - MARCH 2014		Rate per 1000 diabetic patients
Total	144	2.98
Major	51	1.06
Minor	93	1.9

East Midlands Rate in 2011 - 2014
Total - 2.37 Major - 0.82 Minor - 1.55

DIABETES



73% Practice Participation in National Diabetes Audit 2014-15

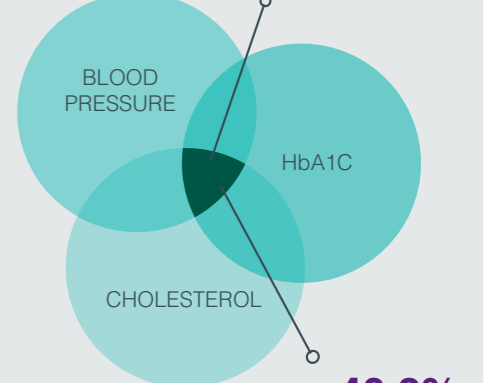
8 CARE PROCESSES 2014-15

TYPE 1 - 31.5%
England = 39.6%
E.Mids CCG Range = 29.3 - 54.0%
Lowest 8 Care Process 49.0% Urine Albumin

TYPE 2 - 57.7%
England = 59.0%
E.Mids CCG Range = 51.2 - 73.8%
Lowest 8 Care Process 77.4% Urine Albumin

% OF DIABETIC PATIENTS MEETING 3 TARGETS 2014-15

TYPE 1 - 17.4%
England = 19.3%
E.Mids CCG Range = 14.6 - 28.5%



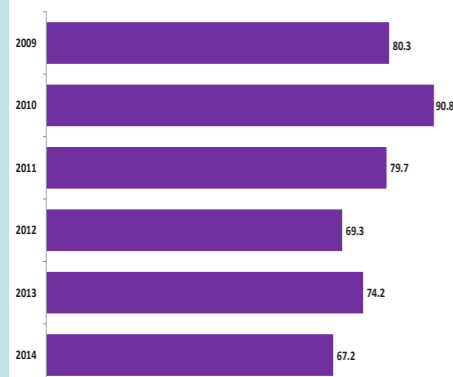
TYPE 2 - 40.3%
England = 41.3%
E.Mids CCG Range = 35.6 - 44.6%

CVD PREMATURE MORTALITY

CVD PREMATURE MORTALITY

CCG Name	2014
LEICESTER CITY CCG	90.1
NOTTINGHAM CITY CCG	89.8
CORBY CCG	89.1
LINCOLNSHIRE WEST CCG	73.5
LINCOLNSHIRE EAST CCG	71.0
MANSFIELD AND ASHFIELD CCG	68.7
HARDWICK CCG	67.2
NEWARK AND SHERWOOD CCG	66.5
ENGLAND	63.7
NORTH DERBYSHIRE CCG	62.8
SOUTHERN DERBYSHIRE CCG	62.8
EREWASH CCG	62.2
NOTTINGHAM NORTH AND EAST CCG	61.3
SOUTH LINCOLNSHIRE CCG	60.8
NENE CCG	58.7
WEST LEICESTERSHIRE CCG	57.0
EAST LEICESTERSHIRE AND RUTLAND CCG	53.8
NOTTINGHAM WEST CCG	53.7
SOUTH WEST LINCOLNSHIRE CCG	49.0
RUSHCLIFFE CCG	35.7

CVD PREMATURE MORTALITY RATE 2009-2014



NUMBER OF PREMATURE DEATHS DUE TO CVD IN 2014

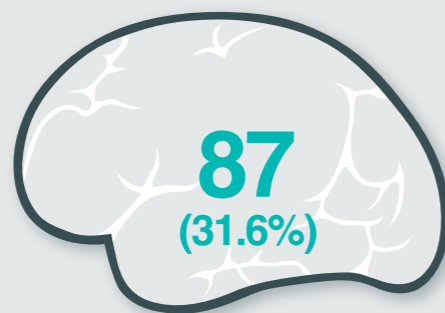
168

LEADING CAUSES OF YEARS OF LIFE LOST IN ENGLAND GLOBAL BURDEN OF DISEASE STUDY 2013

1	Ischaemic heart disease
2	Lung cancer
3	Cerebrovascular disease
4	COPD
5	Alzheimer's disease
11	Other cardiovascular

ATRIAL FIBRILLATION

STROKE ADMISSIONS WITH KNOWN AF 2014-15



NUMBER OF UNDIAGNOSED AF PATIENTS...

2,006

% observed to expected AF prevalence

67%

460

High risk AF patients NOT on anticoagulation (21.1%)

*includes exception reported

CCG EXCEPTION REPORTING FOR ANTICOAGULATION

10.0%

PRACTICE RANGE OF EXCEPTION REPORTING



BLOOD PRESSURE

NUMBER OF PEOPLE WITH UNDIAGNOSED HYPERTENSION



57% observed to expected HYPERTENSION PREVALENCE

Actual = 14.6%

Estimated = 25.5%

5,339

Hypertensive patients with BP NOT TO QOF target 150/90 (16.9%)

*includes exception reported

CHRONIC KIDNEY DISEASE

NUMBER OF PEOPLE WITH UNDIAGNOSED CKD



99% observed to expected CKD PREVALENCE

Actual = 6.3%

Estimated = 6.8%

2,613

CKD patients with BP NOT TO QOF target 140/85 (24.0%)

*includes exception reported

FAMILIAL HYPERCHOLESTEROLEMIA (FH)

HEART ATTACKS IN PEOPLE UNDER 50 - 2012-13 to 2014/15



Estimated people with FH

432 - 864

Rate = 1 per 500 Rate = 1 per 250

Estimated 15% diagnosed with FH

65 - 130

Rate = 1 per 500 Rate = 1 per 250

SMOKING DATA BY LOCAL AUTHORITY

Local Authority	Smoking Prevalence in adults - current smokers (2014)	Smoking prevalence in adults in routine and manual occupations - current smokers (2014)	Successful quitters at 4 weeks per 100,000 smokers (2014-15)
Derby	18.7	33.1	1,351
Derbyshire	19.9	31.5	1,559
Leicester	20.7	28.9	3,214
Leicestershire	17.0	28.9	3,052
Rutland	14.1	29.6	2,456
Lincolnshire	17.5	25.6	3,567
Northamptonshire	19.3	32.0	2,396
Nottingham	24.2	28.1	2,804
Nottinghamshire	17.5	27.8	3,256
East Midlands	18.8	29.2	2,727

Better Similar Worse Compared to England average

HEART FAILURE

HEART FAILURE PATIENTS WITH LVSD

March 2014	265
March 2015	312

HEART FAILURE ADMISSIONS

Admissions	2013-14	2014-15
Primary Diagnosis#	279	249
Secondary Diagnosis	917	1,034

Admission Costs	2013-14	2014-15
Primary Diagnosis#	£861,000	£774,000
Secondary Diagnosis	£2,884,000	£3,263,000

Admission Rate per 1000 HF Patients	2014-15	E.Mids Av
Primary Diagnosis#	146	179
Secondary Diagnosis	608	749

122 Heart Failure LVSD patients NOT on dual therapy ACE inhibitor/ARB and a betablocker (39.1%)

DIABETIC FOOT AMPUTATIONS

	APRIL 2010 - MARCH 2013	
	Number	Rate per 1000 diabetic patients
Total	69	2.14
Major	23	0.71
Minor	46	1.43

	APRIL 2011 - MARCH 2014	
	Number	Rate per 1000 diabetic patients
Total	79	2.33
Major	25	0.74
Minor	54	1.6

East Midlands Rate in 2011 - 2014 Total - 2.37 Major - 0.82 Minor - 1.55

DIABETES



44% Practice Participation in National Diabetes Audit 2014-15

8 CARE PROCESSES 2014-15

TYPE 1 - 44.0% England = 39.6% E.Mids CCG Range = 29.3 - 54.0%

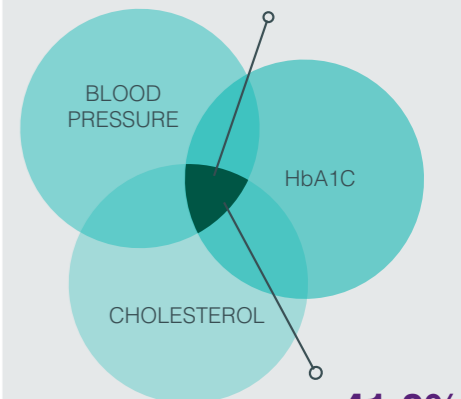
Lowest 8 Care Process 65.4% Urine Albumin

TYPE 2 - 64.6% England = 59.0% E.Mids CCG Range = 51.2 - 73.8%

Lowest 8 Care Process 83.8% BMI

% OF DIABETIC PATIENTS MEETING 3 TARGETS 2014-15

TYPE 1 - 19.7% England = 19.3% E.Mids CCG Range = 14.6 - 28.5%



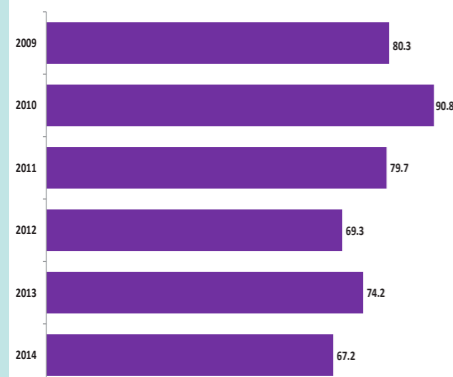
TYPE 2 - 41.0% England = 41.3% E.Mids CCG Range = 35.6 - 44.6%

CVD PREMATURE MORTALITY

CVD PREMATURE MORTALITY

CCG Name	2014
LEICESTER CITY CCG	90.1
NOTTINGHAM CITY CCG	89.8
CORBY CCG	89.1
LINCOLNSHIRE WEST CCG	73.5
LINCOLNSHIRE EAST CCG	71.0
MANSFIELD AND ASHFIELD CCG	68.7
HARDWICK CCG	67.2
NEWARK AND SHERWOOD CCG	66.5
ENGLAND	63.7
NORTH DERBYSHIRE CCG	62.8
SOUTHERN DERBYSHIRE CCG	62.8
EREWASH CCG	62.2
NOTTINGHAM NORTH AND EAST CCG	61.3
SOUTH LINCOLNSHIRE CCG	60.8
NENE CCG	58.7
WEST LEICESTERSHIRE CCG	57.0
EAST LEICESTERSHIRE AND RUTLAND CCG	53.8
NOTTINGHAM WEST CCG	53.7
SOUTH WEST LINCOLNSHIRE CCG	49.0
RUSHCLIFFE CCG	35.7

CVD PREMATURE MORTALITY RATE 2009-2014



NUMBER OF PREMATURE DEATHS DUE TO CVD IN 2014

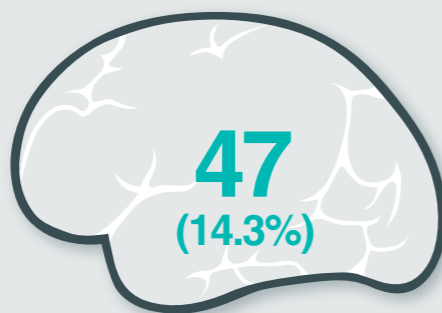
127

LEADING CAUSES OF YEARS OF LIFE LOST IN ENGLAND GLOBAL BURDEN OF DISEASE STUDY 2013

1	Ischaemic heart disease
2	Lung cancer
3	Cerebrovascular disease
4	COPD
5	Alzheimer's disease
11	Other cardiovascular

ATRIAL FIBRILLATION

STROKE ADMISSIONS WITH KNOWN AF 2014-15



NUMBER OF UNDIAGNOSED AF PATIENTS...

1,616

% observed to expected AF prevalence

66%

474

High risk AF patients NOT on anticoagulation (28.5%)

*includes exception reported

CCG EXCEPTION REPORTING FOR ANTICOAGULATION

14.7%

PRACTICE RANGE OF EXCEPTION REPORTING



BLOOD PRESSURE

NUMBER OF PEOPLE WITH UNDIAGNOSED HYPERTENSION



59% observed to expected HYPERTENSION PREVALENCE

Actual = **15.5%**

Estimated = **26.4%**

5,088

Hypertensive patients with BP NOT TO QOF target 150/90 (17.4%)

*includes exception reported

CHRONIC KIDNEY DISEASE

NUMBER OF PEOPLE WITH UNDIAGNOSED CKD



81% observed to expected CKD PREVALENCE

Actual = **5.1%**

Estimated = **6.6%**

1,903

CKD patients with BP NOT TO QOF target 140/85 (25.2%)

*includes exception reported

FAMILIAL HYPERCHOLESTEROLEMIA (FH)

HEART ATTACKS IN PEOPLE UNDER 50 - 2012-13 to 2014/15



Estimated people with FH **376 - 752**

Rate = 1 per 500 Rate = 1 per 250

Estimated **15%** diagnosed with FH

56 - 113

Rate = 1 per 500 Rate = 1 per 250

SMOKING DATA BY LOCAL AUTHORITY

Local Authority	Smoking Prevalence in adults - current smokers (2014)	Smoking prevalence in adults in routine and manual occupations - current smokers (2014)	Successful quitters at 4 weeks per 100,000 smokers (2014-15)
Derby	18.7	33.1	1,351
Derbyshire	19.9	31.5	1,559
Leicester	20.7	28.9	3,214
Leicestershire	17.0	28.9	3,052
Rutland	14.1	29.6	2,456
Lincolnshire	17.5	25.6	3,567
Northamptonshire	19.3	32.0	2,396
Nottingham	24.2	28.1	2,804
Nottinghamshire	17.5	27.8	3,256
East Midlands	18.8	29.2	2,727

Better Similar Worse Compared to England average

HEART FAILURE

HEART FAILURE PATIENTS WITH LVSD

March 2014	406
March 2015	509

HEART FAILURE ADMISSIONS

Admissions	2013-14	2014-15
Primary Diagnosis#	258	276
Secondary Diagnosis	908	1,043

Admission Costs	2013-14	2014-15
Primary Diagnosis#	£890,000	£917,000
Secondary Diagnosis	£2,965,000	£3,254,000

Admission Rate per 1000 HF Patients	2014-15	E.Mids Av
Primary Diagnosis#	185	179
Secondary Diagnosis	700	749

182 Heart Failure LVSD patients NOT on dual therapy ACE inhibitor/ARB and a betablocker (35.8%)

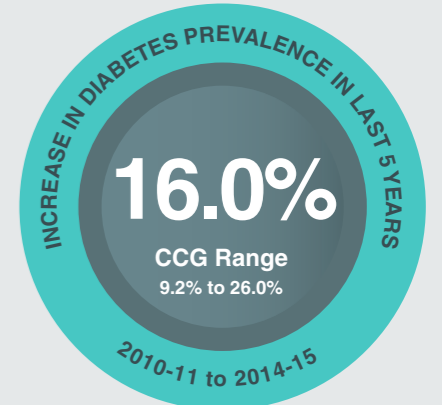
DIABETIC FOOT AMPUTATIONS

APRIL 2010 - MARCH 2013		Rate per 1000 diabetic patients
Total	Number	
Total	119	4.34
Major	38	1.39
Minor	81	2.96

APRIL 2011 - MARCH 2014		Rate per 1000 diabetic patients
Total	Number	
Total	122	4.25
Major	32	1.12
Minor	90	3.1

East Midlands Rate in 2011 - 2014
Total - 2.37 Major - 0.82 Minor - 1.55

DIABETES



50% Practice Participation in National Diabetes Audit 2014-15

8 CARE PROCESSES 2014-15

TYPE 1 - 45.2%
England = 39.6%
E.Mids CCG Range = 29.3 - 54.0%

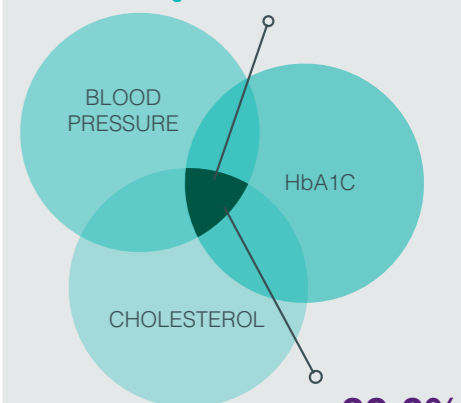
Lowest 8 Care Process
61.8% Urine Albumin

TYPE 2 - 63.8%
England = 59.0%
E.Mids CCG Range = 51.2 - 73.8%

Lowest 8 Care Process
78.6% Urine Albumin

% OF DIABETIC PATIENTS MEETING 3 TARGETS 2014-15

TYPE 1 - 17.4%
England = 19.3%
E.Mids CCG Range = 14.6 - 28.5%



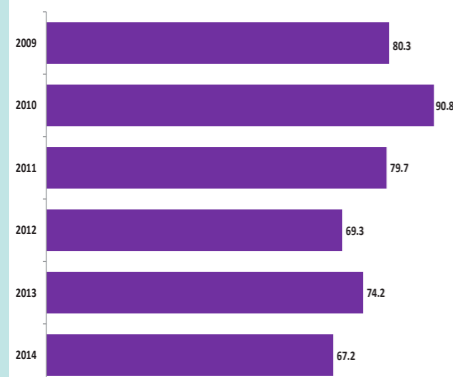
TYPE 2 - 39.0%
England = 41.3%
E.Mids CCG Range = 35.6 - 44.6%

CVD PREMATURE MORTALITY

CVD PREMATURE MORTALITY

CCG Name	2014
LEICESTER CITY CCG	90.1
NOTTINGHAM CITY CCG	89.8
CORBY CCG	89.1
LINCOLNSHIRE WEST CCG	73.5
LINCOLNSHIRE EAST CCG	71.0
MANSFIELD AND ASHFIELD CCG	68.7
HARDWICK CCG	67.2
NEWARK AND SHERWOOD CCG	66.5
ENGLAND	63.7
NORTH DERBYSHIRE CCG	62.8
SOUTHERN DERBYSHIRE CCG	62.8
EREWASH CCG	62.2
NOTTINGHAM NORTH AND EAST CCG	61.3
SOUTH LINCOLNSHIRE CCG	60.8
NENE CCG	58.7
WEST LEICESTERSHIRE CCG	57.0
EAST LEICESTERSHIRE AND RUTLAND CCG	53.8
NOTTINGHAM WEST CCG	53.7
SOUTH WEST LINCOLNSHIRE CCG	49.0
RUSHCLIFFE CCG	35.7

CVD PREMATURE MORTALITY RATE 2009-2014



NUMBER OF PREMATURE DEATHS DUE TO CVD IN 2014

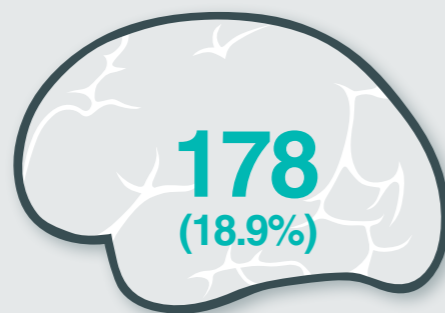
350

LEADING CAUSES OF YEARS OF LIFE LOST IN ENGLAND GLOBAL BURDEN OF DISEASE STUDY 2013

1	Ischaemic heart disease
2	Lung cancer
3	Cerebrovascular disease
4	COPD
5	Alzheimer's disease
11	Other cardiovascular

ATRIAL FIBRILLATION

STROKE ADMISSIONS WITH KNOWN AF 2014-15



NUMBER OF UNDIAGNOSED AF PATIENTS...

4,674

% observed to expected AF prevalence

69%

1,306

High risk AF patients NOT on anticoagulation (23.1%)

*includes exception reported

CCG EXCEPTION REPORTING FOR ANTICOAGULATION

12.6%

PRACTICE RANGE OF EXCEPTION REPORTING



BLOOD PRESSURE

NUMBER OF PEOPLE WITH UNDIAGNOSED HYPERTENSION



59% observed to expected HYPERTENSION PREVALENCE

Actual = 14.1%

Estimated = 23.9%

17,241

Hypertensive patients with BP NOT TO QOF target 150/90 (18.7%)

*includes exception reported

CHRONIC KIDNEY DISEASE

NUMBER OF PEOPLE WITH UNDIAGNOSED CKD



67% observed to expected CKD PREVALENCE

Actual = 4.0%

Estimated = 6.4%

4,978

CKD patients with BP NOT TO QOF target 140/85 (24.5%)

*includes exception reported

FAMILIAL HYPERCHOLESTEROLEMIA (FH)

HEART ATTACKS IN PEOPLE UNDER 50 - 2012-13 to 2014/15



Estimated people with FH **1,306 - 2,611**
Rate = 1 per 500 Rate = 1 per 250

Estimated 15% diagnosed with FH
196 - 392
Rate = 1 per 500 Rate = 1 per 250

SMOKING DATA BY LOCAL AUTHORITY

Local Authority	Smoking Prevalence in adults - current smokers (2014)	Smoking prevalence in adults in routine and manual occupations - current smokers (2014)	Successful quitters at 4 weeks per 100,000 smokers (2014-15)
Derby	18.7	33.1	1,351
Derbyshire	19.9	31.5	1,559
Leicester	20.7	28.9	3,214
Leicestershire	17.0	28.9	3,052
Rutland	14.1	29.6	2,456
Lincolnshire	17.5	25.6	3,567
Northamptonshire	19.3	32.0	2,396
Nottingham	24.2	28.1	2,804
Nottinghamshire	17.5	27.8	3,256
East Midlands	18.8	29.2	2,727

Better Similar Worse Compared to England average

HEART FAILURE

HEART FAILURE PATIENTS WITH LVSD

March 2014	1,104
March 2015	1,348

HEART FAILURE ADMISSIONS

Admissions	2013-14	2014-15
Primary Diagnosis#	704	809
Secondary Diagnosis	2,732	3,377

Admission Costs	2013-14	2014-15
Primary Diagnosis#	£2,484,000	£2,819,000
Secondary Diagnosis	£9,651,000	£10,956,000

Admission Rate per 1000 HF Patients	2014-15	E.Mids Av
Primary Diagnosis#	173	179
Secondary Diagnosis	721	749

441 Heart Failure LVSD patients NOT on dual therapy ACE inhibitor/ARB and a betablocker (32.7%)

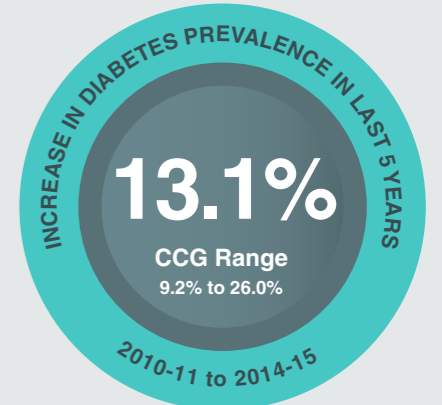
DIABETIC FOOT AMPUTATIONS

APRIL 2010 - MARCH 2013		Rate per 1000 diabetic patients
Total	Number	
Total	177	2.09
Major	63	0.74
Minor	114	1.35

APRIL 2011 - MARCH 2014		Rate per 1000 diabetic patients
Total	Number	
Total	169	1.90
Major	61	0.69
Minor	108	1.2

East Midlands Rate in 2011 - 2014
Total - 2.37 Major - 0.82 Minor - 1.55

DIABETES



51% Practice Participation in National Diabetes Audit 2014-15

8 CARE PROCESSES 2014-15

TYPE 1 - 37.8%
England = 39.6%
E.Mids CCG Range = 29.3 - 54.0%

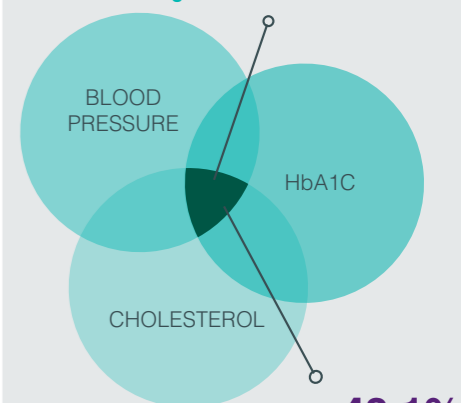
Lowest 8 Care Process
57.9% Urine Albumin

TYPE 2 - 60.0%
England = 59.0%
E.Mids CCG Range = 51.2 - 73.8%

Lowest 8 Care Process
78.8% Urine Albumin

% OF DIABETIC PATIENTS MEETING 3 TARGETS 2014-15

TYPE 1 - 22.9%
England = 19.3%
E.Mids CCG Range = 14.6 - 28.5%

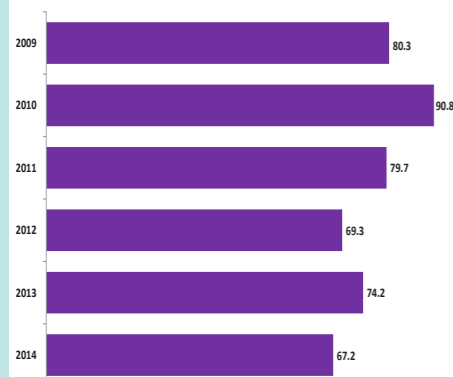


CVD PREMATURE MORTALITY

CVD PREMATURE MORTALITY

CCG Name	2014
LEICESTER CITY CCG	90.1
NOTTINGHAM CITY CCG	89.8
CORBY CCG	89.1
LINCOLNSHIRE WEST CCG	73.5
LINCOLNSHIRE EAST CCG	71.0
MANSFIELD AND ASHFIELD CCG	68.7
HARDWICK CCG	67.2
NEWARK AND SHERWOOD CCG	66.5
ENGLAND	63.7
NORTH DERBYSHIRE CCG	62.8
SOUTHERN DERBYSHIRE CCG	62.8
EREWASH CCG	62.2
NOTTINGHAM NORTH AND EAST CCG	61.3
SOUTH LINCOLNSHIRE CCG	60.8
NENE CCG	58.7
WEST LEICESTERSHIRE CCG	57.0
EAST LEICESTERSHIRE AND RUTLAND CCG	53.8
NOTTINGHAM WEST CCG	53.7
SOUTH WEST LINCOLNSHIRE CCG	49.0
RUSHCLIFFE CCG	35.7

CVD PREMATURE MORTALITY RATE 2009-2014



NUMBER OF PREMATURE DEATHS DUE TO CVD IN 2014

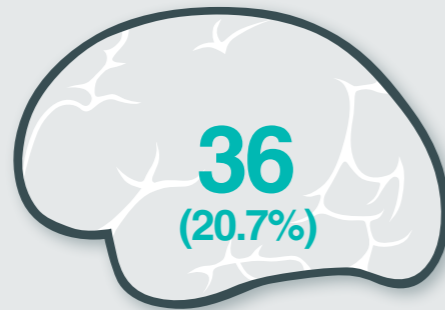
91

LEADING CAUSES OF YEARS OF LIFE LOST IN ENGLAND GLOBAL BURDEN OF DISEASE STUDY 2013

1	Ischaemic heart disease
2	Lung cancer
3	Cerebrovascular disease
4	COPD
5	Alzheimer's disease
11	Other cardiovascular

ATRIAL FIBRILLATION

STROKE ADMISSIONS WITH KNOWN AF 2014-15



NUMBER OF UNDIAGNOSED AF PATIENTS...

1,068

% observed to expected AF prevalence

70%

298

High risk AF patients **NOT** on anticoagulation (24.6%)

*includes exception reported

CCG EXCEPTION REPORTING FOR ANTICOAGULATION

14.5%

PRACTICE RANGE OF EXCEPTION REPORTING



BLOOD PRESSURE

NUMBER OF PEOPLE WITH UNDIAGNOSED HYPERTENSION



55% observed to expected HYPERTENSION PREVALENCE

Actual = **14.8%**

Estimated = **27.1%**

3,885

Hypertensive patients with BP **NOT TO** QOF target 150/90 (20.1%)

*includes exception reported

CHRONIC KIDNEY DISEASE

NUMBER OF PEOPLE WITH UNDIAGNOSED CKD



80% observed to expected CKD PREVALENCE

Actual = **5.5%**

Estimated = **7.4%**

1,647

CKD patients with BP **NOT TO** QOF target 140/85 (28.5%)

*includes exception reported

FAMILIAL HYPERCHOLESTEROLEMIA (FH)

HEART ATTACKS IN PEOPLE UNDER 50 - 2012-13 to 2014/15



Estimated people with FH **260 - 521**

Rate = 1 per 500 Rate = 1 per 250

Estimated **15%** diagnosed with FH

39 - 78

Rate = 1 per 500 Rate = 1 per 250

SMOKING DATA BY LOCAL AUTHORITY

Local Authority	Smoking Prevalence in adults - current smokers (2014)	Smoking prevalence in adults in routine and manual occupations - current smokers (2014)	Successful quitters at 4 weeks per 100,000 smokers (2014-15)
Derby	18.7	33.1	1,351
Derbyshire	19.9	31.5	1,559
Leicester	20.7	28.9	3,214
Leicestershire	17.0	28.9	3,052
Rutland	14.1	29.6	2,456
Lincolnshire	17.5	25.6	3,567
Northamptonshire	19.3	32.0	2,396
Nottingham	24.2	28.1	2,804
Nottinghamshire	17.5	27.8	3,256
East Midlands	18.8	29.2	2,727

Better Similar Worse Compared to England average

HEART FAILURE

HEART FAILURE PATIENTS WITH LVSD

March 2014	232
March 2015	288

HEART FAILURE ADMISSIONS

Admissions	2013-14	2014-15
Primary Diagnosis#	122	177
Secondary Diagnosis	597	641

Admission Costs	2013-14	2014-15
Primary Diagnosis#	£417,000	£586,000
Secondary Diagnosis	£1,978,000	£1,941,000

Admission Rate per 1000 HF Patients	2014-15	E.Mids Av
Primary Diagnosis#	161	179
Secondary Diagnosis	583	749

100 Heart Failure LVSD patients **NOT** on dual therapy ACE inhibitor/ARB and a betablocker (**34.7%**)

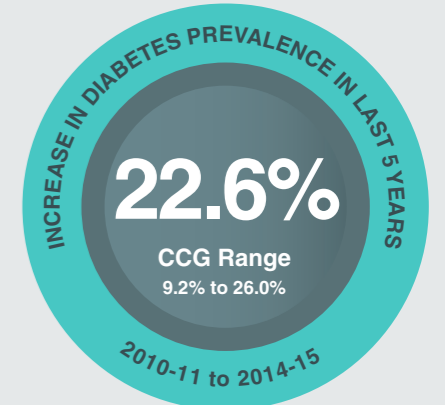
DIABETIC FOOT AMPUTATIONS

APRIL 2010 - MARCH 2013		Rate per 1000 diabetic patients
Total	Number	
Total	58	3.27
Major	23	1.30
Minor	35	1.98

APRIL 2011 - MARCH 2014		Rate per 1000 diabetic patients
Total	Number	
Total	58	3.08
Major	19	1.01
Minor	39	2.1

East Midlands Rate in 2011 - 2014
Total - 2.37 Major - 0.82 Minor - 1.55

DIABETES



64% Practice Participation in National Diabetes Audit 2014-15

8 CARE PROCESSES 2014-15

TYPE 1 - 49.4%
England = 39.6%
E.Mids CCG Range = 29.3 - 54.0%

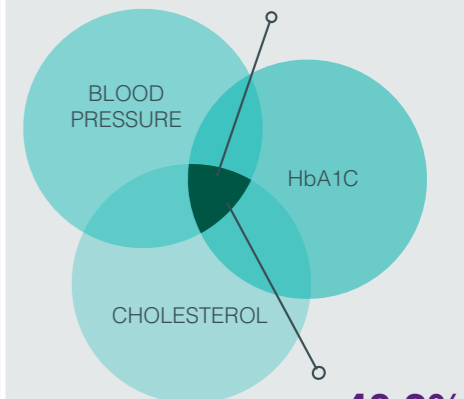
Lowest 8 Care Process
60.4% Urine Albumin

TYPE 2 - 73.8%
England = 59.0%
E.Mids CCG Range = 51.2 - 73.8%

Lowest 8 Care Process
84.0% Urine Albumin

% OF DIABETIC PATIENTS MEETING 3 TARGETS 2014-15

TYPE 1 - 18.1%
England = 19.3%
E.Mids CCG Range = 14.6 - 28.5%



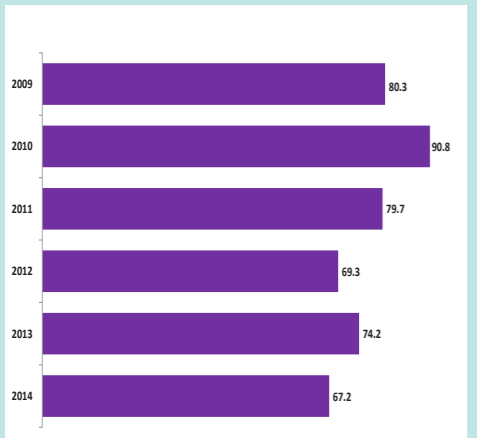
TYPE 2 - 40.2%
England = 41.3%
E.Mids CCG Range = 35.6 - 44.6%

CVD PREMATURE MORTALITY

CVD PREMATURE MORTALITY

CCG Name	2014
LEICESTER CITY CCG	90.1
NOTTINGHAM CITY CCG	89.8
CORBY CCG	89.1
LINCOLNSHIRE WEST CCG	73.5
LINCOLNSHIRE EAST CCG	71.0
MANSFIELD AND ASHFIELD CCG	68.7
HARDWICK CCG	67.2
NEWARK AND SHERWOOD CCG	66.5
ENGLAND	63.7
NORTH DERBYSHIRE CCG	62.8
SOUTHERN DERBYSHIRE CCG	62.8
EREWASH CCG	62.2
NOTTINGHAM NORTH AND EAST CCG	61.3
SOUTH LINCOLNSHIRE CCG	60.8
NENE CCG	58.7
WEST LEICESTERSHIRE CCG	57.0
EAST LEICESTERSHIRE AND RUTLAND CCG	53.8
NOTTINGHAM WEST CCG	53.7
SOUTH WEST LINCOLNSHIRE CCG	49.0
RUSHCLIFFE CCG	35.7

CVD PREMATURE MORTALITY RATE 2009-2014



NUMBER OF PREMATURE DEATHS DUE TO CVD IN 2014

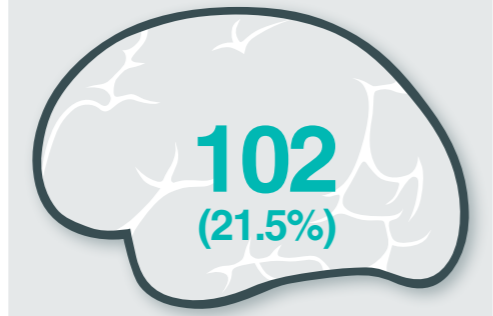
198

LEADING CAUSES OF YEARS OF LIFE LOST IN ENGLAND GLOBAL BURDEN OF DISEASE STUDY 2013

1	Ischaemic heart disease
2	Lung cancer
3	Cerebrovascular disease
4	COPD
5	Alzheimer's disease
11	Other cardiovascular

ATRIAL FIBRILLATION

STROKE ADMISSIONS WITH KNOWN AF 2014-15



NUMBER OF UNDIAGNOSED AF PATIENTS...

2,185
% observed to expected AF prevalence
74%

905
High risk AF patients NOT on anticoagulation (25.8%)

*includes exception reported
CCG EXCEPTION REPORTING FOR ANTICOAGULATION

11.9%
PRACTICE RANGE OF EXCEPTION REPORTING



BLOOD PRESSURE

NUMBER OF PEOPLE WITH UNDIAGNOSED HYPERTENSION



59% observed to expected
HYPERTENSION PREVALENCE
Actual = **16.5%**
Estimated = **27.9%**

9,200
Hypertensive patients with BP NOT TO QOF target 150/90 (19.2%)
*includes exception reported

CHRONIC KIDNEY DISEASE

NUMBER OF PEOPLE WITH UNDIAGNOSED CKD



84% observed to expected
CKD PREVALENCE
Actual = **5.8%**
Estimated = **7.5%**

3,749
CKD patients with BP NOT TO QOF target 140/85 (27.1%)
*includes exception reported

FAMILIAL HYPERCHOLESTEROLEMIA (FH)

HEART ATTACKS IN PEOPLE UNDER 50 - 2012-13 to 2014/15



Estimated people with FH
581 - 1,161
Rate = 1 per 500 Rate = 1 per 250

Estimated **15%** diagnosed with FH
87 - 174
Rate = 1 per 500 Rate = 1 per 250

SMOKING DATA BY LOCAL AUTHORITY

Local Authority	Smoking Prevalence in adults - current smokers (2014)	Smoking prevalence in adults in routine and manual occupations - current smokers (2014)	Successful quitters at 4 weeks per 100,000 smokers (2014-15)
Derby	18.7	33.1	1,351
Derbyshire	19.9	31.5	1,559
Leicester	20.7	28.9	3,214
Leicestershire	17.0	28.9	3,052
Rutland	14.1	29.6	2,456
Lincolnshire	17.5	25.6	3,567
Northamptonshire	19.3	32.0	2,396
Nottingham	24.2	28.1	2,804
Nottinghamshire	17.5	27.8	3,256
East Midlands	18.8	29.2	2,727

Better Similar Worse Compared to England average

HEART FAILURE

HEART FAILURE PATIENTS WITH LVSD

March 2014	862
March 2015	927

HEART FAILURE ADMISSIONS

Admissions	2013-14	2014-15
Primary Diagnosis#	362	442
Secondary Diagnosis	1,887	2,219

Admission Costs	2013-14	2014-15
Primary Diagnosis#	£1,207,000	£1,362,000
Secondary Diagnosis	£5,632,000	£6,321,000

Admission Rate per 1000 HF Patients	2014-15	E.Mids Av
Primary Diagnosis#	148	179
Secondary Diagnosis	743	749

342 Heart Failure LVSD patients NOT on dual therapy ACE inhibitor/ARB and a betablocker (36.9%)

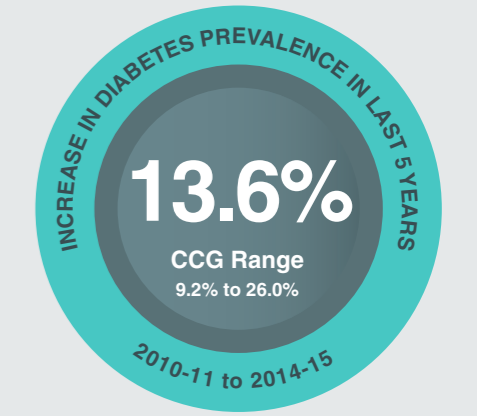
DIABETIC FOOT AMPUTATIONS

	Number	Rate per 1000 diabetic patients
Total	108	2.42
Major	48	1.08
Minor	60	1.34

	Number	Rate per 1000 diabetic patients
Total	112	2.42
Major	44	0.95
Minor	68	1.5

East Midlands Rate in 2011 - 2014
Total - 2.37 Major - 0.82 Minor - 1.55

DIABETES



70% Practice Participation in National Diabetes Audit 2014-15

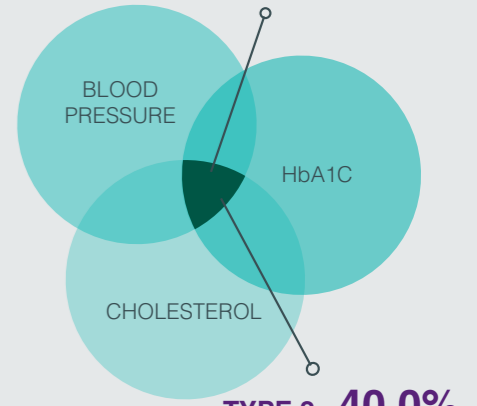
8 CARE PROCESSES 2014-15

TYPE 1 - 46.9%
England = 39.6%
E.Mids CCG Range = 29.3 - 54.0%
Lowest 8 Care Process 63.1% Urine Albumin

TYPE 2 - 64.1%
England = 59.0%
E.Mids CCG Range = 51.2 - 73.8%
Lowest 8 Care Process 80.7% Urine Albumin

% OF DIABETIC PATIENTS MEETING 3 TARGETS 2014-15

TYPE 1 - 15.6%
England = 19.3%
E.Mids CCG Range = 14.6 - 28.5%



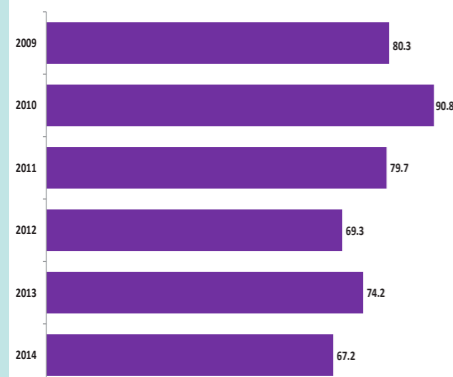
TYPE 2 - 40.0%
England = 41.3%
E.Mids CCG Range = 35.6 - 44.6%

CVD PREMATURE MORTALITY

CVD PREMATURE MORTALITY

CCG Name	2014
LEICESTER CITY CCG	90.1
NOTTINGHAM CITY CCG	89.8
CORBY CCG	89.1
LINCOLNSHIRE WEST CCG	73.5
LINCOLNSHIRE EAST CCG	71.0
MANSFIELD AND ASHFIELD CCG	68.7
HARDWICK CCG	67.2
NEWARK AND SHERWOOD CCG	66.5
ENGLAND	63.7
NORTH DERBYSHIRE CCG	62.8
SOUTHERN DERBYSHIRE CCG	62.8
EREWASH CCG	62.2
NOTTINGHAM NORTH AND EAST CCG	61.3
SOUTH LINCOLNSHIRE CCG	60.8
NENE CCG	58.7
WEST LEICESTERSHIRE CCG	57.0
EAST LEICESTERSHIRE AND RUTLAND CCG	53.8
NOTTINGHAM WEST CCG	53.7
SOUTH WEST LINCOLNSHIRE CCG	49.0
RUSHCLIFFE CCG	35.7

CVD PREMATURE MORTALITY RATE 2009-2014



NUMBER OF PREMATURE DEATHS DUE TO CVD IN 2014

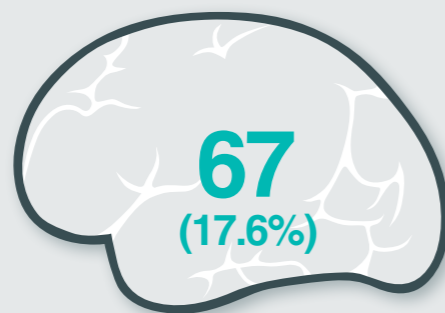
203

LEADING CAUSES OF YEARS OF LIFE LOST IN ENGLAND GLOBAL BURDEN OF DISEASE STUDY 2013

1	Ischaemic heart disease
2	Lung cancer
3	Cerebrovascular disease
4	COPD
5	Alzheimer's disease
11	Other cardiovascular

ATRIAL FIBRILLATION

STROKE ADMISSIONS WITH KNOWN AF 2014-15



67 (17.6%)

NUMBER OF UNDIAGNOSED AF PATIENTS...

2,140

% observed to expected AF prevalence

64%

709

High risk AF patients NOT on anticoagulation (34.1%)

*includes exception reported

CCG EXCEPTION REPORTING FOR ANTICOAGULATION

18.7%

PRACTICE RANGE OF EXCEPTION REPORTING



BLOOD PRESSURE

NUMBER OF PEOPLE WITH UNDIAGNOSED HYPERTENSION



37,577

50% observed to expected HYPERTENSION PREVALENCE

Actual = 10.5%

Estimated = 20.9%

7,692

Hypertensive patients with BP NOT TO QOF target 150/90 (20.4%)

*includes exception reported

CHRONIC KIDNEY DISEASE

NUMBER OF PEOPLE WITH UNDIAGNOSED CKD



3,016

77% observed to expected CKD PREVALENCE

Actual = 3.5%

Estimated = 4.6%

2,702

CKD patients with BP NOT TO QOF target 140/85 (26.3%)

*includes exception reported

FAMILIAL HYPERCHOLESTEROLEMIA (FH)

HEART ATTACKS IN PEOPLE UNDER 50 - 2012-13 to 2014/15



200

Estimated people with FH 722 - 1,443

Rate = 1 per 500 Rate = 1 per 250

Estimated 15% diagnosed with FH

108 - 216

Rate = 1 per 500 Rate = 1 per 250

SMOKING DATA BY LOCAL AUTHORITY

Local Authority	Smoking Prevalence in adults - current smokers (2014)	Smoking prevalence in adults in routine and manual occupations - current smokers (2014)	Successful quitters at 4 weeks per 100,000 smokers (2014-15)
Derby	18.7	33.1	1,351
Derbyshire	19.9	31.5	1,559
Leicester	20.7	28.9	3,214
Leicestershire	17.0	28.9	3,052
Rutland	14.1	29.6	2,456
Lincolnshire	17.5	25.6	3,567
Northamptonshire	19.3	32.0	2,396
Nottingham	24.2	28.1	2,804
Nottinghamshire	17.5	27.8	3,256
East Midlands	18.8	29.2	2,727

Better Similar Worse Compared to England average

HEART FAILURE

HEART FAILURE PATIENTS WITH LVSD

March 2014	449
March 2015	541

HEART FAILURE ADMISSIONS

Admissions	2013-14	2014-15
Primary Diagnosis#	359	423
Secondary Diagnosis	1,406	1,607

Admission Costs	2013-14	2014-15
Primary Diagnosis#	£1,074,000	£1,466,000
Secondary Diagnosis	£3,865,000	£4,669,000

Admission Rate per 1000 HF Patients	2014-15	E.Mids Av
Primary Diagnosis#	214	179
Secondary Diagnosis	814	749

197 Heart Failure LVSD patients NOT on dual therapy ACE inhibitor/ARB and a betablocker (36.4%)

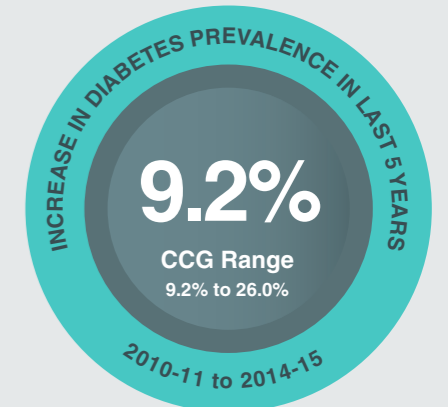
DIABETIC FOOT AMPUTATIONS

APRIL 2010 - MARCH 2013		Rate per 1000 diabetic patients
Total	Number	
Total	93	2.23
Major	26	0.62
Minor	67	1.61

APRIL 2011 - MARCH 2014		Rate per 1000 diabetic patients
Total	Number	
Total	117	2.69
Major	34	0.78
Minor	83	1.9

East Midlands Rate in 2011 - 2014 Total - 2.37 Major - 0.82 Minor - 1.55

DIABETES



76% Practice Participation in National Diabetes Audit 2014-15

8 CARE PROCESSES 2014-15

TYPE 1 - 31.0% England = 39.6% E.Mids CCG Range = 29.3 - 54.0%

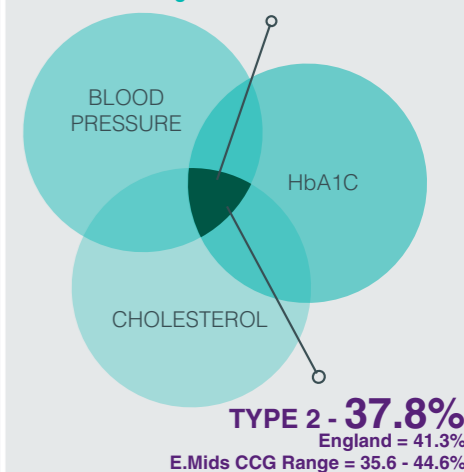
Lowest 8 Care Process 51.6% Urine Albumin

TYPE 2 - 52.3% England = 59.0% E.Mids CCG Range = 51.2 - 73.8%

Lowest 8 Care Process 73.1% Urine Albumin

% OF DIABETIC PATIENTS MEETING 3 TARGETS 2014-15

TYPE 1 - 16.2% England = 19.3% E.Mids CCG Range = 14.6 - 28.5%



TYPE 2 - 37.8% England = 41.3% E.Mids CCG Range = 35.6 - 44.6%

CARDIOVASCULAR DISEASE PREVENTION INFOGRAPHIC

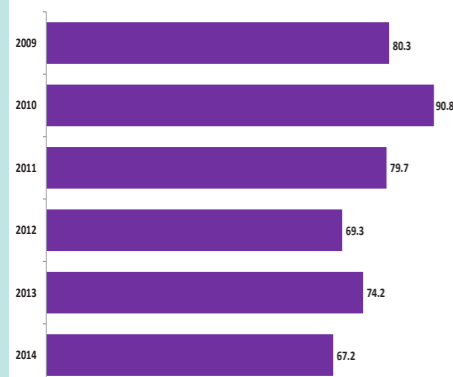
NOTTINGHAM NORTH AND EAST CCG

CVD PREMATURE MORTALITY

CVD PREMATURE MORTALITY

CCG Name	2014
LEICESTER CITY CCG	90.1
NOTTINGHAM CITY CCG	89.8
CORBY CCG	89.1
LINCOLNSHIRE WEST CCG	73.5
LINCOLNSHIRE EAST CCG	71.0
MANSFIELD AND ASHFIELD CCG	68.7
HARDWICK CCG	67.2
NEWARK AND SHERWOOD CCG	66.5
ENGLAND	63.7
NORTH DERBYSHIRE CCG	62.8
SOUTHERN DERBYSHIRE CCG	62.8
EREWASH CCG	62.2
NOTTINGHAM NORTH AND EAST CCG	61.3
SOUTH LINCOLNSHIRE CCG	60.8
NENE CCG	58.7
WEST LEICESTERSHIRE CCG	57.0
EAST LEICESTERSHIRE AND RUTLAND CCG	53.8
NOTTINGHAM WEST CCG	53.7
SOUTH WEST LINCOLNSHIRE CCG	49.0
RUSHCLIFFE CCG	35.7

CVD PREMATURE MORTALITY RATE 2009-2014



NUMBER OF PREMATURE DEATHS DUE TO CVD IN 2014

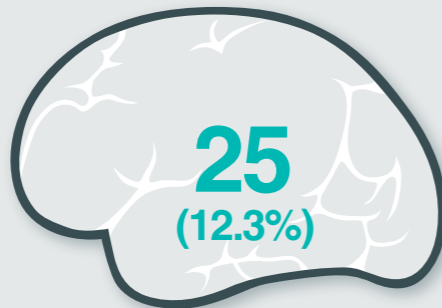
92

LEADING CAUSES OF YEARS OF LIFE LOST IN ENGLAND GLOBAL BURDEN OF DISEASE STUDY 2013

1	Ischaemic heart disease
2	Lung cancer
3	Cerebrovascular disease
4	COPD
5	Alzheimer's disease
11	Other cardiovascular

ATRIAL FIBRILLATION

STROKE ADMISSIONS WITH KNOWN AF 2014-15



NUMBER OF UNDIAGNOSED AF PATIENTS...

1,437

% observed to expected AF prevalence

64%

494

High risk AF patients **NOT** on anticoagulation **(35.2%)**

*includes exception reported

CCG EXCEPTION REPORTING FOR ANTICOAGULATION

22.2%

PRACTICE RANGE OF EXCEPTION REPORTING



BLOOD PRESSURE

NUMBER OF PEOPLE WITH UNDIAGNOSED HYPERTENSION



55% observed to expected **HYPERTENSION PREVALENCE**

Actual = **14.8%**

Estimated = **26.7%**

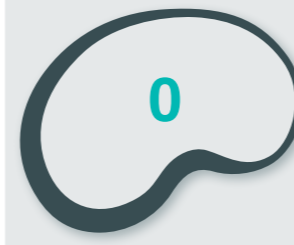
3,950

Hypertensive patients with BP **NOT TO** QOF target 150/90 **(18.0%)**

*includes exception reported

CHRONIC KIDNEY DISEASE

NUMBER OF PEOPLE WITH UNDIAGNOSED CKD



109% observed to expected **CKD PREVALENCE**

Actual = **7.1%**

Estimated = **6.9%**

2,198

CKD patients with BP **NOT TO** QOF target 140/85 **(26.0%)**

*includes exception reported

FAMILIAL HYPERCHOLESTEROLEMIA (FH)

HEART ATTACKS IN PEOPLE UNDER 50 - 2012-13 to 2014/15



Estimated people with FH **298 - 596**

Rate = 1 per 500 Rate = 1 per 250

Estimated **15%** diagnosed with FH

45 - 89

Rate = 1 per 500 Rate = 1 per 250

SMOKING DATA BY LOCAL AUTHORITY

Local Authority	Smoking Prevalence in adults - current smokers (2014)	Smoking prevalence in adults in routine and manual occupations - current smokers (2014)	Successful quitters at 4 weeks per 100,000 smokers (2014-15)
Derby	18.7	33.1	1,351
Derbyshire	19.9	31.5	1,559
Leicester	20.7	28.9	3,214
Leicestershire	17.0	28.9	3,052
Rutland	14.1	29.6	2,456
Lincolnshire	17.5	25.6	3,567
Northamptonshire	19.3	32.0	2,396
Nottingham	24.2	28.1	2,804
Nottinghamshire	17.5	27.8	3,256
East Midlands	18.8	29.2	2,727

Better Similar Worse Compared to England average

HEART FAILURE

HEART FAILURE PATIENTS WITH LVSD

March 2014	227
March 2015	219

HEART FAILURE ADMISSIONS

Admissions	2013-14	2014-15
Primary Diagnosis#	172	191
Secondary Diagnosis	691	865

Admission Costs	2013-14	2014-15
Primary Diagnosis#	£615,000	£603,000
Secondary Diagnosis	£2,019,000	£2,677,000

Admission Rate per 1000 HF Patients	2014-15	E.Mids Av
Primary Diagnosis#	199	179
Secondary Diagnosis	902	749

81 Heart Failure LVSD patients **NOT** on dual therapy ACE inhibitor/ARB and a betablocker **(37%)**

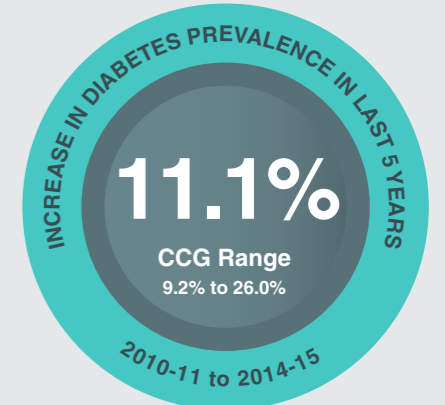
DIABETIC FOOT AMPUTATIONS

	Number	Rate per 1000 diabetic patients
Total	55	2.62
Major	19	0.90
Minor	36	1.71

	Number	Rate per 1000 diabetic patients
Total	66	3.03
Major	22	1.01
Minor	44	2.0

East Midlands Rate in 2011 - 2014
Total - 2.37 Major - 0.82 Minor - 1.55

DIABETES



91% Practice Participation in National Diabetes Audit 2014-15

8 CARE PROCESSES 2014-15

TYPE 1 - 29.3%
England = 39.6%
E.Mids CCG Range = 29.3 - 54.0%

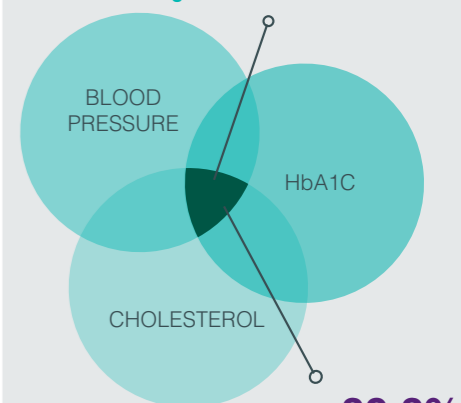
Lowest 8 Care Process
49.9% Urine Albumin

TYPE 2 - 65.3%
England = 59.0%
E.Mids CCG Range = 51.2 - 73.8%

Lowest 8 Care Process
78.1% Urine Albumin

% OF DIABETIC PATIENTS MEETING 3 TARGETS 2014-15

TYPE 1 - 17.9%
England = 19.3%
E.Mids CCG Range = 14.6 - 28.5%



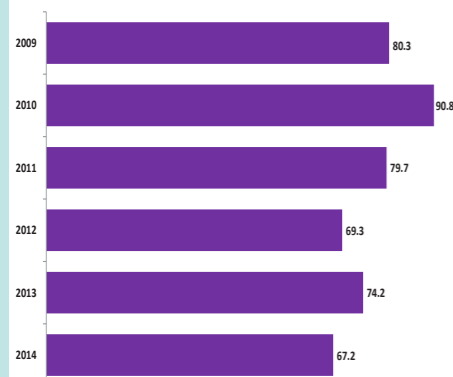
TYPE 2 - 39.3%
England = 41.3%
E.Mids CCG Range = 35.6 - 44.6%

CVD PREMATURE MORTALITY

CVD PREMATURE MORTALITY

CCG Name	2014
LEICESTER CITY CCG	90.1
NOTTINGHAM CITY CCG	89.8
CORBY CCG	89.1
LINCOLNSHIRE WEST CCG	73.5
LINCOLNSHIRE EAST CCG	71.0
MANSFIELD AND ASHFIELD CCG	68.7
HARDWICK CCG	67.2
NEWARK AND SHERWOOD CCG	66.5
ENGLAND	63.7
NORTH DERBYSHIRE CCG	62.8
SOUTHERN DERBYSHIRE CCG	62.8
EREWASH CCG	62.2
NOTTINGHAM NORTH AND EAST CCG	61.3
SOUTH LINCOLNSHIRE CCG	60.8
NENE CCG	58.7
WEST LEICESTERSHIRE CCG	57.0
EAST LEICESTERSHIRE AND RUTLAND CCG	53.8
NOTTINGHAM WEST CCG	53.7
SOUTH WEST LINCOLNSHIRE CCG	49.0
RUSHCLIFFE CCG	35.7

CVD PREMATURE MORTALITY RATE 2009-2014



NUMBER OF PREMATURE DEATHS DUE TO CVD IN 2014

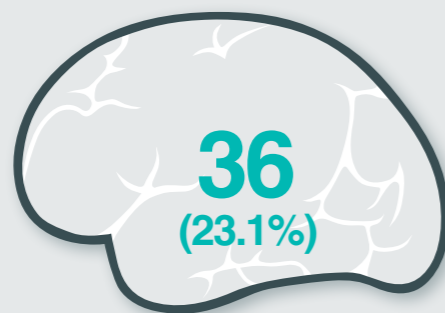
51

LEADING CAUSES OF YEARS OF LIFE LOST IN ENGLAND GLOBAL BURDEN OF DISEASE STUDY 2013

1	Ischaemic heart disease
2	Lung cancer
3	Cerebrovascular disease
4	COPD
5	Alzheimer's disease
11	Other cardiovascular

ATRIAL FIBRILLATION

STROKE ADMISSIONS WITH KNOWN AF 2014-15



NUMBER OF UNDIAGNOSED AF PATIENTS...

785

% observed to expected AF prevalence

70%

330

High risk AF patients NOT on anticoagulation (31.6%)

*includes exception reported

CCG EXCEPTION REPORTING FOR ANTICOAGULATION

15.7%

PRACTICE RANGE OF EXCEPTION REPORTING



BLOOD PRESSURE

NUMBER OF PEOPLE WITH UNDIAGNOSED HYPERTENSION



58% observed to expected HYPERTENSION PREVALENCE

Actual = 15.1%

Estimated = 26.1%

2,338

Hypertensive patients with BP NOT TO QOF target 150/90 (16.4%)

*includes exception reported

CHRONIC KIDNEY DISEASE

NUMBER OF PEOPLE WITH UNDIAGNOSED CKD



95% observed to expected CKD PREVALENCE

Actual = 6.3%

Estimated = 6.9%

1,126

CKD patients with BP NOT TO QOF target 140/85 (23.5%)

*includes exception reported

FAMILIAL HYPERCHOLESTEROLEMIA (FH)

HEART ATTACKS IN PEOPLE UNDER 50 - 2012-13 to 2014/15



Estimated people with FH 189 - 378

Rate = 1 per 500 Rate = 1 per 250

Estimated 15% diagnosed with FH

28 - 57

Rate = 1 per 500 Rate = 1 per 250

SMOKING DATA BY LOCAL AUTHORITY

Local Authority	Smoking Prevalence in adults - current smokers (2014)	Smoking prevalence in adults in routine and manual occupations - current smokers (2014)	Successful quitters at 4 weeks per 100,000 smokers (2014-15)
Derby	18.7	33.1	1,351
Derbyshire	19.9	31.5	1,559
Leicester	20.7	28.9	3,214
Leicestershire	17.0	28.9	3,052
Rutland	14.1	29.6	2,456
Lincolnshire	17.5	25.6	3,567
Northamptonshire	19.3	32.0	2,396
Nottingham	24.2	28.1	2,804
Nottinghamshire	17.5	27.8	3,256
East Midlands	18.8	29.2	2,727

Better Similar Worse Compared to England average

HEART FAILURE

HEART FAILURE PATIENTS WITH LVSD

March 2014	197
March 2015	270

HEART FAILURE ADMISSIONS

Admissions	2013-14	2014-15
Primary Diagnosis#	116	124
Secondary Diagnosis	453	492

Admission Costs	2013-14	2014-15
Primary Diagnosis#	£410,000	£389,000
Secondary Diagnosis	£1,358,000	£1,705,000

Admission Rate per 1000 HF Patients	2014-15	E.Mids Av
Primary Diagnosis#	155	179
Secondary Diagnosis	615	749

103 Heart Failure LVSD patients NOT on dual therapy ACE inhibitor/ARB and a betablocker (38.1%)

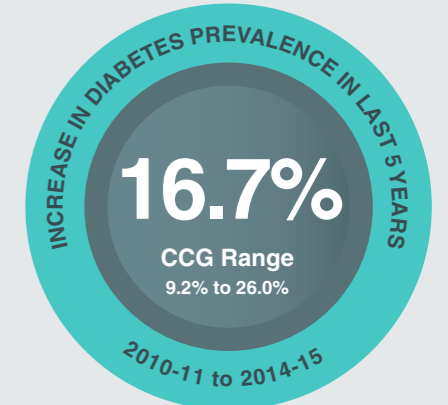
DIABETIC FOOT AMPUTATIONS

APRIL 2010 - MARCH 2013		Rate per 1000 diabetic patients
Total	Number	
Total	15	1.14
Major	7	0.53
Minor	8	0.61

APRIL 2011 - MARCH 2014		Rate per 1000 diabetic patients
Total	Number	
Total	20	1.45
Major	7	0.51
Minor	13	0.9

East Midlands Rate in 2011 - 2014 Total - 2.37 Major - 0.82 Minor - 1.55

DIABETES



92% Practice Participation in National Diabetes Audit 2014-15

8 CARE PROCESSES 2014-15

TYPE 1 - 37.1% England = 39.6% E.Mids CCG Range = 29.3 - 54.0%

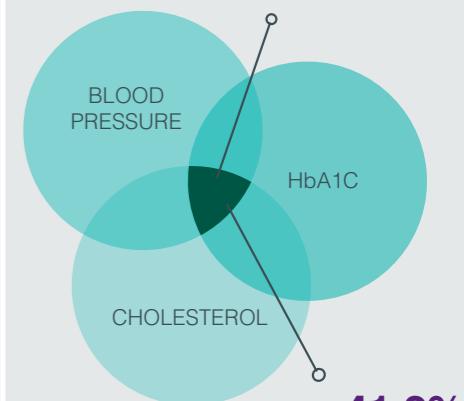
Lowest 8 Care Process 59.0% Urine Albumin

TYPE 2 - 66.0% England = 59.0% E.Mids CCG Range = 51.2 - 73.8%

Lowest 8 Care Process 80.6% Urine Albumin

% OF DIABETIC PATIENTS MEETING 3 TARGETS 2014-15

TYPE 1 - 18.8% England = 19.3% E.Mids CCG Range = 14.6 - 28.5%



TYPE 2 - 41.2% England = 41.3% E.Mids CCG Range = 35.6 - 44.6%

CARDIOVASCULAR DISEASE PREVENTION INFOGRAPHIC

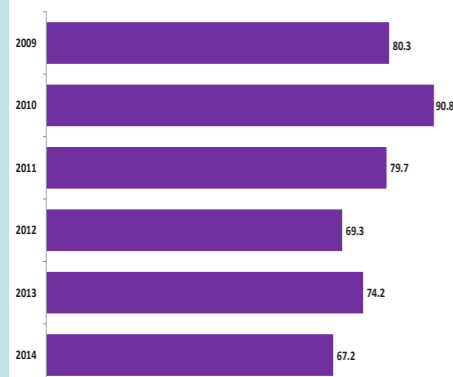
RUSHCLIFFE CCG

CVD PREMATURE MORTALITY

CVD PREMATURE MORTALITY

CCG Name	2014
LEICESTER CITY CCG	90.1
NOTTINGHAM CITY CCG	89.8
CORBY CCG	89.1
LINCOLNSHIRE WEST CCG	73.5
LINCOLNSHIRE EAST CCG	71.0
MANSFIELD AND ASHFIELD CCG	68.7
HARDWICK CCG	67.2
NEWARK AND SHERWOOD CCG	66.5
ENGLAND	63.7
NORTH DERBYSHIRE CCG	62.8
SOUTHERN DERBYSHIRE CCG	62.8
EREWASH CCG	62.2
NOTTINGHAM NORTH AND EAST CCG	61.3
SOUTH LINCOLNSHIRE CCG	60.8
NENE CCG	58.7
WEST LEICESTERSHIRE CCG	57.0
EAST LEICESTERSHIRE AND RUTLAND CCG	53.8
NOTTINGHAM WEST CCG	53.7
SOUTH WEST LINCOLNSHIRE CCG	49.0
RUSHCLIFFE CCG	35.7

CVD PREMATURE MORTALITY RATE 2009-2014



NUMBER OF PREMATURE DEATHS DUE TO CVD IN 2014

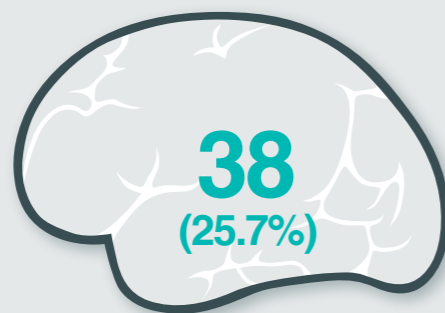
45

LEADING CAUSES OF YEARS OF LIFE LOST IN ENGLAND GLOBAL BURDEN OF DISEASE STUDY 2013

1	Ischaemic heart disease
2	Lung cancer
3	Cerebrovascular disease
4	COPD
5	Alzheimer's disease
11	Other cardiovascular

ATRIAL FIBRILLATION

STROKE ADMISSIONS WITH KNOWN AF 2014-15



NUMBER OF UNDIAGNOSED AF PATIENTS...

1,157

% observed to expected AF prevalence

67%

378

High risk AF patients **NOT** on anticoagulation **(30.1%)**

*includes exception reported

CCG EXCEPTION REPORTING FOR ANTICOAGULATION

18.5%

PRACTICE RANGE OF EXCEPTION REPORTING



BLOOD PRESSURE

NUMBER OF PEOPLE WITH UNDIAGNOSED HYPERTENSION



55% observed to expected **HYPERTENSION PREVALENCE**

Actual = **14.0%**

Estimated = **25.2%**

2,640

Hypertensive patients with BP **NOT TO** QOF target 150/90 **(15.3%)**

*includes exception reported

CHRONIC KIDNEY DISEASE

NUMBER OF PEOPLE WITH UNDIAGNOSED CKD



95% observed to expected **CKD PREVALENCE**

Actual = **6.5%**

Estimated = **7.3%**

1,495

CKD patients with BP **NOT TO** QOF target 140/85 **(23.3%)**

*includes exception reported

FAMILIAL HYPERCHOLESTEROLEMIA (FH)

HEART ATTACKS IN PEOPLE UNDER 50 - 2012-13 to 2014/15



Estimated people with FH **247 - 494**

Rate = 1 per 500 Rate = 1 per 250

Estimated **15%** diagnosed with FH

37 - 74

Rate = 1 per 500 Rate = 1 per 250

SMOKING DATA BY LOCAL AUTHORITY

Local Authority	Smoking Prevalence in adults - current smokers (2014)	Smoking prevalence in adults in routine and manual occupations - current smokers (2014)	Successful quitters at 4 weeks per 100,000 smokers (2014-15)
Derby	18.7	33.1	1,351
Derbyshire	19.9	31.5	1,559
Leicester	20.7	28.9	3,214
Leicestershire	17.0	28.9	3,052
Rutland	14.1	29.6	2,456
Lincolnshire	17.5	25.6	3,567
Northamptonshire	19.3	32.0	2,396
Nottingham	24.2	28.1	2,804
Nottinghamshire	17.5	27.8	3,256
East Midlands	18.8	29.2	2,727

Better Similar Worse Compared to England average

HEART FAILURE

HEART FAILURE PATIENTS WITH LVSD

March 2014	178
March 2015	376

HEART FAILURE ADMISSIONS

Admissions	2013-14	2014-15
Primary Diagnosis#	132	170
Secondary Diagnosis	591	672

Admission Costs	2013-14	2014-15
Primary Diagnosis#	£420,000	£589,000
Secondary Diagnosis	£1,820,000	£2,065,000

Admission Rate per 1000 HF Patients	2014-15	E.Mids Av
Primary Diagnosis#	179	179
Secondary Diagnosis	707	749

152 Heart Failure LVSD patients **NOT** on dual therapy ACE inhibitor/ARB and a betablocker **(40.4%)**

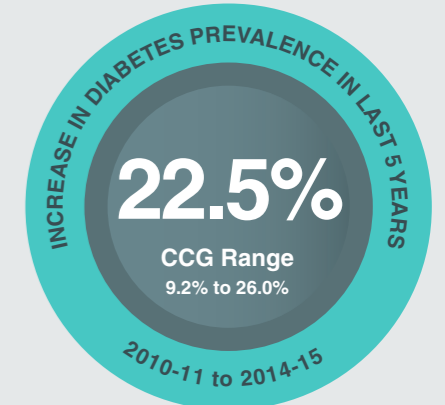
DIABETIC FOOT AMPUTATIONS

APRIL 2010 - MARCH 2013		Rate per 1000 diabetic patients
Total	Number	
Total	34	2.43
Major	10	0.71
Minor	24	1.71

APRIL 2011 - MARCH 2014		Rate per 1000 diabetic patients
Total	Number	
Total	34	2.29
Major	9	0.61
Minor	25	1.7

East Midlands Rate in 2011 - 2014
Total - 2.37 Major - 0.82 Minor - 1.55

DIABETES



92% Practice Participation in National Diabetes Audit 2014-15

8 CARE PROCESSES 2014-15

TYPE 1 - 42.2%
England = 39.6%
E.Mids CCG Range = 29.3 - 54.0%

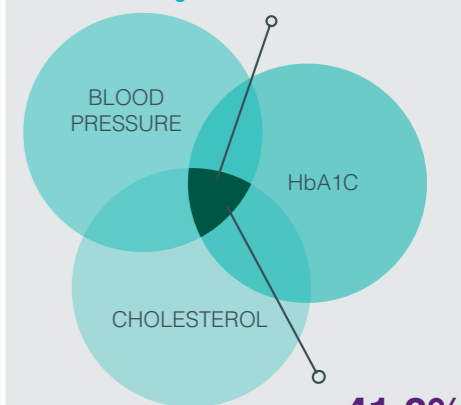
Lowest 8 Care Process
64.5% Urine Albumin

TYPE 2 - 70.5%
England = 59.0%
E.Mids CCG Range = 51.2 - 73.8%

Lowest 8 Care Process
83.9% Urine Albumin

% OF DIABETIC PATIENTS MEETING 3 TARGETS 2014-15

TYPE 1 - 21.7%
England = 19.3%
E.Mids CCG Range = 14.6 - 28.5%

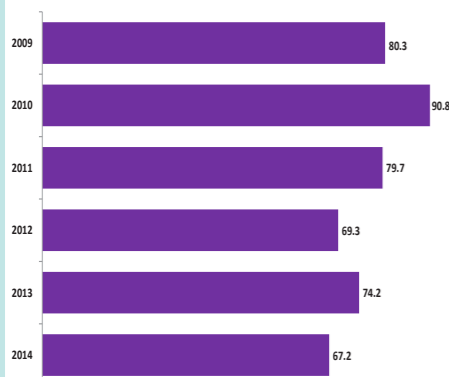


CVD PREMATURE MORTALITY

CVD PREMATURE MORTALITY

CCG Name	2014
LEICESTER CITY CCG	90.1
NOTTINGHAM CITY CCG	89.8
CORBY CCG	89.1
LINCOLNSHIRE WEST CCG	73.5
LINCOLNSHIRE EAST CCG	71.0
MANSFIELD AND ASHFIELD CCG	68.7
HARDWICK CCG	67.2
NEWARK AND SHERWOOD CCG	66.5
ENGLAND	63.7
NORTH DERBYSHIRE CCG	62.8
SOUTHERN DERBYSHIRE CCG	62.8
EREWASH CCG	62.2
NOTTINGHAM NORTH AND EAST CCG	61.3
SOUTH LINCOLNSHIRE CCG	60.8
NENE CCG	58.7
WEST LEICESTERSHIRE CCG	57.0
EAST LEICESTERSHIRE AND RUTLAND CCG	53.8
NOTTINGHAM WEST CCG	53.7
SOUTH WEST LINCOLNSHIRE CCG	49.0
RUSHCLIFFE CCG	35.7

CVD PREMATURE MORTALITY RATE 2009-2014



NUMBER OF PREMATURE DEATHS DUE TO CVD IN 2014

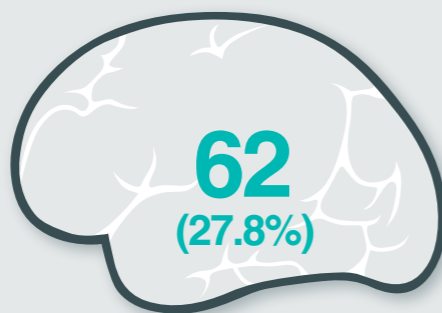
106

LEADING CAUSES OF YEARS OF LIFE LOST IN ENGLAND GLOBAL BURDEN OF DISEASE STUDY 2013

1	Ischaemic heart disease
2	Lung cancer
3	Cerebrovascular disease
4	COPD
5	Alzheimer's disease
11	Other cardiovascular

ATRIAL FIBRILLATION

STROKE ADMISSIONS WITH KNOWN AF 2014-15



NUMBER OF UNDIAGNOSED AF PATIENTS...

1,449

% observed to expected AF prevalence

70%

480

High risk AF patients **NOT** on anticoagulation **(24.0%)**

*includes exception reported

CCG EXCEPTION REPORTING FOR ANTICOAGULATION

12.5%

PRACTICE RANGE OF EXCEPTION REPORTING



BLOOD PRESSURE

NUMBER OF PEOPLE WITH UNDIAGNOSED HYPERTENSION



61% observed to expected **HYPERTENSION PREVALENCE**

Actual = **16.8%**

Estimated = **27.4%**

4,461

Hypertensive patients with BP **NOT TO** QOF target 150/90 **(16.4%)**

*includes exception reported

CHRONIC KIDNEY DISEASE

NUMBER OF PEOPLE WITH UNDIAGNOSED CKD



81% observed to expected **CKD PREVALENCE**

Actual = **5.9%**

Estimated = **7.8%**

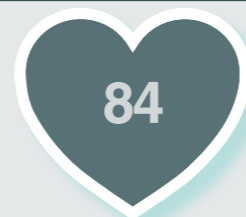
1,729

CKD patients with BP **NOT TO** QOF target 140/85 **(22.6%)**

*includes exception reported

FAMILIAL HYPERCHOLESTEROLEMIA (FH)

HEART ATTACKS IN PEOPLE UNDER 50 - 2012-13 to 2014/15



Estimated people with FH **324 - 647**

Rate = 1 per 500 Rate = 1 per 250

Estimated **15%** diagnosed with FH

49 - 97

Rate = 1 per 500 Rate = 1 per 250

SMOKING DATA BY LOCAL AUTHORITY

Local Authority	Smoking Prevalence in adults - current smokers (2014)	Smoking prevalence in adults in routine and manual occupations - current smokers (2014)	Successful quitters at 4 weeks per 100,000 smokers (2014-15)
Derby	18.7	33.1	1,351
Derbyshire	19.9	31.5	1,559
Leicester	20.7	28.9	3,214
Leicestershire	17.0	28.9	3,052
Rutland	14.1	29.6	2,456
Lincolnshire	17.5	25.6	3,567
Northamptonshire	19.3	32.0	2,396
Nottingham	24.2	28.1	2,804
Nottinghamshire	17.5	27.8	3,256
East Midlands	18.8	29.2	2,727

Better Similar Worse Compared to England average

HEART FAILURE

HEART FAILURE PATIENTS WITH LVSD

March 2014	387
March 2015	388

HEART FAILURE ADMISSIONS

Admissions	2013-14	2014-15
Primary Diagnosis#	245	219
Secondary Diagnosis	907	1,038

Admission Costs	2013-14	2014-15
Primary Diagnosis#	£849,000	£707,000
Secondary Diagnosis	£2,734,000	£3,024,000

Admission Rate per 1000 HF Patients	2014-15	E.Mids Av
Primary Diagnosis#	146	179
Secondary Diagnosis	691	749

172 Heart Failure LVSD patients **NOT** on dual therapy ACE inhibitor/ARB and a betablocker **(44.3%)**

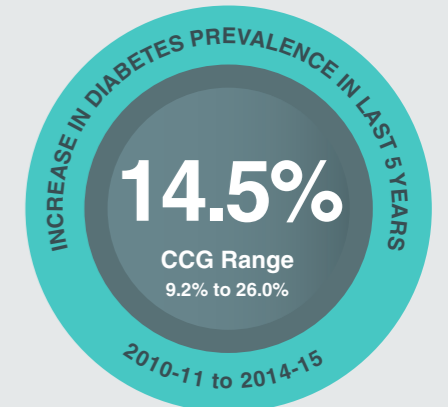
DIABETIC FOOT AMPUTATIONS

	Number	Rate per 1000 diabetic patients
Total	62	2.53
Major	23	0.94
Minor	39	1.59

	Number	Rate per 1000 diabetic patients
Total	63	2.45
Major	27	1.05
Minor	36	1.4

East Midlands Rate in 2011 - 2014
Total - 2.37 Major - 0.82 Minor - 1.55

DIABETES



20% Practice Participation in National Diabetes Audit 2014-15

8 CARE PROCESSES 2014-15

TYPE 1 - 41.1%
England = 39.6%
E.Mids CCG Range = 29.3 - 54.0%

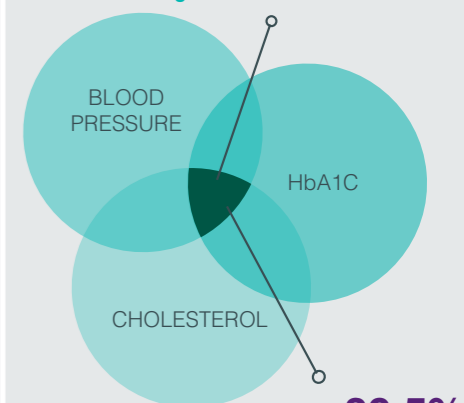
Lowest 8 Care Process
58.9% Urine Albumin

TYPE 2 - 65.6%
England = 59.0%
E.Mids CCG Range = 51.2 - 73.8%

Lowest 8 Care Process
84.1% Urine Albumin

% OF DIABETIC PATIENTS MEETING 3 TARGETS 2014-15

TYPE 1 - 14.6%
England = 19.3%
E.Mids CCG Range = 14.6 - 28.5%

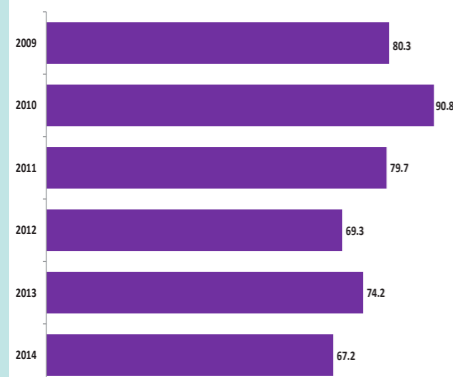


CVD PREMATURE MORTALITY

CVD PREMATURE MORTALITY

CCG Name	2014
LEICESTER CITY CCG	90.1
NOTTINGHAM CITY CCG	89.8
CORBY CCG	89.1
LINCOLNSHIRE WEST CCG	73.5
LINCOLNSHIRE EAST CCG	71.0
MANSFIELD AND ASHFIELD CCG	68.7
HARDWICK CCG	67.2
NEWARK AND SHERWOOD CCG	66.5
ENGLAND	63.7
NORTH DERBYSHIRE CCG	62.8
SOUTHERN DERBYSHIRE CCG	62.8
EREWASH CCG	62.2
NOTTINGHAM NORTH AND EAST CCG	61.3
SOUTH LINCOLNSHIRE CCG	60.8
NENE CCG	58.7
WEST LEICESTERSHIRE CCG	57.0
EAST LEICESTERSHIRE AND RUTLAND CCG	53.8
NOTTINGHAM WEST CCG	53.7
SOUTH WEST LINCOLNSHIRE CCG	49.0
RUSHCLIFFE CCG	35.7

CVD PREMATURE MORTALITY RATE 2009-2014



NUMBER OF PREMATURE DEATHS DUE TO CVD IN 2014

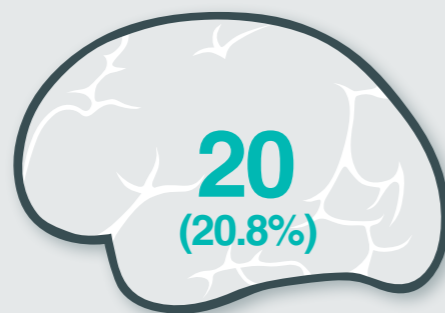
72

LEADING CAUSES OF YEARS OF LIFE LOST IN ENGLAND GLOBAL BURDEN OF DISEASE STUDY 2013

1	Ischaemic heart disease
2	Lung cancer
3	Cerebrovascular disease
4	COPD
5	Alzheimer's disease
11	Other cardiovascular

ATRIAL FIBRILLATION

STROKE ADMISSIONS WITH KNOWN AF 2014-15



NUMBER OF UNDIAGNOSED AF PATIENTS...

1,092

% observed to expected AF prevalence

72%

298

High risk AF patients **NOT** on anticoagulation (20.2%)

*includes exception reported

CCG EXCEPTION REPORTING FOR ANTICOAGULATION

10.6%

PRACTICE RANGE OF EXCEPTION REPORTING



BLOOD PRESSURE

NUMBER OF PEOPLE WITH UNDIAGNOSED HYPERTENSION



62% observed to expected HYPERTENSION PREVALENCE

Actual = **16.8%**

Estimated = **26.9%**

3,837

Hypertensive patients with BP **NOT TO** QOF target 150/90 (17.4%)

*includes exception reported

CHRONIC KIDNEY DISEASE

NUMBER OF PEOPLE WITH UNDIAGNOSED CKD



96% observed to expected CKD PREVALENCE

Actual = **6.6%**

Estimated = **7.4%**

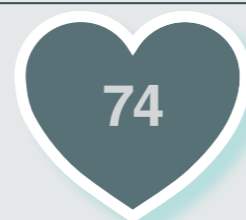
1,814

CKD patients with BP **NOT TO** QOF target 140/85 (26.1%)

*includes exception reported

FAMILIAL HYPERCHOLESTEROLEMIA (FH)

HEART ATTACKS IN PEOPLE UNDER 50 - 2012-13 to 2014/15



Estimated people with FH **263 - 526**

Rate = 1 per 500 Rate = 1 per 250

Estimated **15%** diagnosed with FH

39 - 79

Rate = 1 per 500 Rate = 1 per 250

SMOKING DATA BY LOCAL AUTHORITY

Local Authority	Smoking Prevalence in adults - current smokers (2014)	Smoking prevalence in adults in routine and manual occupations - current smokers (2014)	Successful quitters at 4 weeks per 100,000 smokers (2014-15)
Derby	18.7	33.1	1,351
Derbyshire	19.9	31.5	1,559
Leicester	20.7	28.9	3,214
Leicestershire	17.0	28.9	3,052
Rutland	14.1	29.6	2,456
Lincolnshire	17.5	25.6	3,567
Northamptonshire	19.3	32.0	2,396
Nottingham	24.2	28.1	2,804
Nottinghamshire	17.5	27.8	3,256
East Midlands	18.8	29.2	2,727

Better Similar Worse Compared to England average

HEART FAILURE

HEART FAILURE PATIENTS WITH LVSD

March 2014	477
March 2015	551

HEART FAILURE ADMISSIONS

Admissions	2013-14	2014-15
Primary Diagnosis#	146	195
Secondary Diagnosis	684	719

Admission Costs	2013-14	2014-15
Primary Diagnosis#	£442,000	£614,000
Secondary Diagnosis	£2,138,000	£2,213,000

Admission Rate per 1000 HF Patients	2014-15	E.Mids Av
Primary Diagnosis#	144	179
Secondary Diagnosis	529	749

167 Heart Failure LVSD patients **NOT** on dual therapy ACE inhibitor/ARB and a betablocker (**30.3%**)

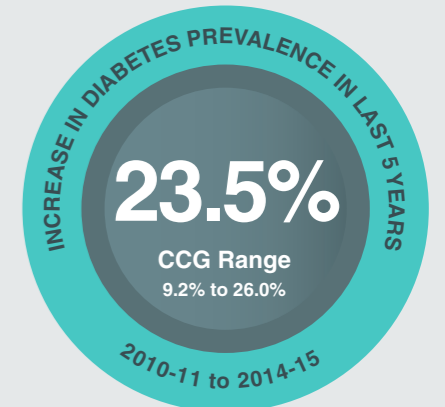
DIABETIC FOOT AMPUTATIONS

	Number	Rate per 1000 diabetic patients
Total	45	2.39
Major	16	0.85
Minor	29	1.54

	Number	Rate per 1000 diabetic patients
Total	63	3.14
Major	23	1.15
Minor	40	2.0

East Midlands Rate in 2011 - 2014
Total - 2.37 Major - 0.82 Minor - 1.55

DIABETES



53% Practice Participation in National Diabetes Audit 2014-15

8 CARE PROCESSES 2014-15

TYPE 1 - 30.0%
England = 39.6%
E.Mids CCG Range = 29.3 - 54.0%

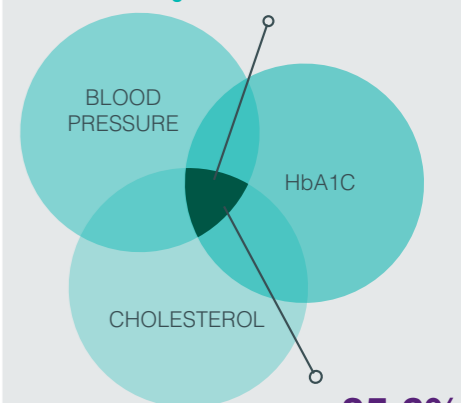
Lowest 8 Care Process
50.3% Urine Albumin

TYPE 2 - 52.3%
England = 59.0%
E.Mids CCG Range = 51.2 - 73.8%

Lowest 8 Care Process
74.3% Urine Albumin

% OF DIABETIC PATIENTS MEETING 3 TARGETS 2014-15

TYPE 1 - 20.6%
England = 19.3%
E.Mids CCG Range = 14.6 - 28.5%



TYPE 2 - 35.6%
England = 41.3%
E.Mids CCG Range = 35.6 - 44.6%

CVD PREMATURE MORTALITY

CVD PREMATURE MORTALITY

CCG Name	2014
LEICESTER CITY CCG	90.1
NOTTINGHAM CITY CCG	89.8
CORBY CCG	89.1
LINCOLNSHIRE WEST CCG	73.5
LINCOLNSHIRE EAST CCG	71.0
MANSFIELD AND ASHFIELD CCG	68.7
HARDWICK CCG	67.2
NEWARK AND SHERWOOD CCG	66.5
ENGLAND	63.7
NORTH DERBYSHIRE CCG	62.8
SOUTHERN DERBYSHIRE CCG	62.8
EREWASH CCG	62.2
NOTTINGHAM NORTH AND EAST CCG	61.3
SOUTH LINCOLNSHIRE CCG	60.8
NENE CCG	58.7
WEST LEICESTERSHIRE CCG	57.0
EAST LEICESTERSHIRE AND RUTLAND CCG	53.8
NOTTINGHAM WEST CCG	53.7
SOUTH WEST LINCOLNSHIRE CCG	49.0
RUSHCLIFFE CCG	35.7

CVD PREMATURE MORTALITY RATE 2009-2014



NUMBER OF PREMATURE DEATHS DUE TO CVD IN 2014

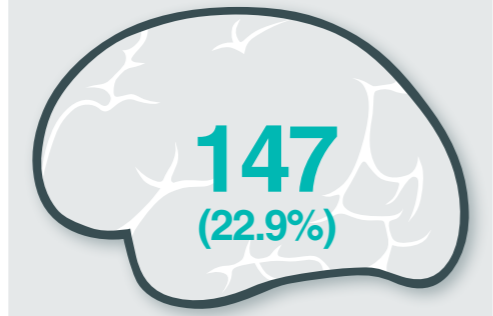
317

LEADING CAUSES OF YEARS OF LIFE LOST IN ENGLAND GLOBAL BURDEN OF DISEASE STUDY 2013

1	Ischaemic heart disease
2	Lung cancer
3	Cerebrovascular disease
4	COPD
5	Alzheimer's disease
11	Other cardiovascular

ATRIAL FIBRILLATION

STROKE ADMISSIONS WITH KNOWN AF 2014-15



NUMBER OF UNDIAGNOSED AF PATIENTS...

4,203
% observed to expected AF prevalence
68%

1,477
High risk AF patients NOT on anticoagulation
(30.3%)

CGG EXCEPTION REPORTING FOR ANTICOAGULATION

17.7%
PRACTICE RANGE OF EXCEPTION REPORTING



BLOOD PRESSURE

NUMBER OF PEOPLE WITH UNDIAGNOSED HYPERTENSION



57% observed to expected
HYPERTENSION PREVALENCE
Actual = **14.0%**
Estimated = **24.7%**

14,007
Hypertensive patients with BP NOT TO QOF target 150/90
(18.5%)

FAMILIAL HYPERCHOLESTEROLEMIA (FH)

HEART ATTACKS IN PEOPLE UNDER 50 - 2012-13 to 2014/15



Estimated people with FH
1,081 - 2,163
Rate = 1 per 500 Rate = 1 per 250

Estimated **15%** diagnosed with FH
162 - 324
Rate = 1 per 500 Rate = 1 per 250

SMOKING DATA BY LOCAL AUTHORITY

Local Authority	Smoking Prevalence in adults - current smokers (2014)	Smoking prevalence in adults in routine and manual occupations - current smokers (2014)	Successful quitters at 4 weeks per 100,000 smokers (2014-15)
Derby	18.7	33.1	1,351
Derbyshire	19.9	31.5	1,559
Leicester	20.7	28.9	3,214
Leicestershire	17.0	28.9	3,052
Rutland	14.1	29.6	2,456
Lincolnshire	17.5	25.6	3,567
Northamptonshire	19.3	32.0	2,396
Nottingham	24.2	28.1	2,804
Nottinghamshire	17.5	27.8	3,256
East Midlands	18.8	29.2	2,727

Better Similar Worse Compared to England average

HEART FAILURE

HEART FAILURE PATIENTS WITH LVSD

March 2014	1,168
March 2015	1,351

HEART FAILURE ADMISSIONS

Admissions	2013-14	2014-15
Primary Diagnosis#	709	793
Secondary Diagnosis	2,606	3,310

Admission Costs	2013-14	2014-15
Primary Diagnosis#	£2,059,000	£2,514,000
Secondary Diagnosis	£7,472,000	£9,792,000

Admission Rate per 1000 HF Patients	2014-15	E.Mids Av
Primary Diagnosis#	170	179
Secondary Diagnosis	709	749

607 Heart Failure LVSD patients NOT on dual therapy ACE inhibitor/ARB and a betablocker **(44.9%)**

DIABETIC FOOT AMPUTATIONS

APRIL 2010 - MARCH 2013		Rate per 1000 diabetic patients
Total	201	2.46
Major	86	1.05
Minor	115	1.41

APRIL 2011 - MARCH 2014		Rate per 1000 diabetic patients
Total	198	2.34
Major	84	0.99
Minor	114	1.4

East Midlands Rate in 2011 - 2014
Total - 2.37 Major - 0.82 Minor - 1.55

DIABETES



36% Practice Participation in National Diabetes Audit 2014-15

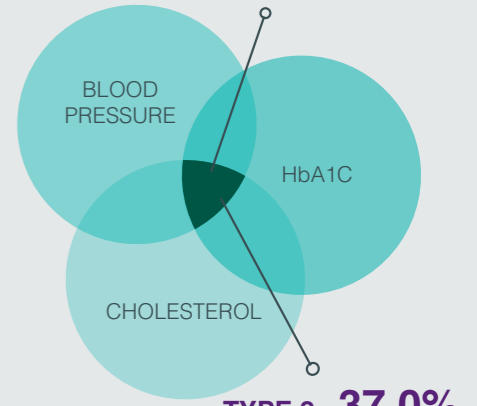
8 CARE PROCESSES 2014-15

TYPE 1 - 37.2%
England = 39.6%
E.Mids CCG Range = 29.3 - 54.0%
Lowest 8 Care Process
58.1% Urine Albumin

TYPE 2 - 66.1%
England = 59.0%
E.Mids CCG Range = 51.2 - 73.8%
Lowest 8 Care Process
83.4% BMI

% OF DIABETIC PATIENTS MEETING 3 TARGETS 2014-15

TYPE 1 - 17.1%
England = 19.3%
E.Mids CCG Range = 14.6 - 28.5%

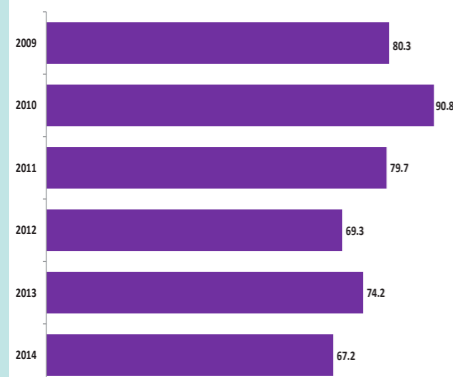


CVD PREMATURE MORTALITY

CVD PREMATURE MORTALITY

CCG Name	2014
LEICESTER CITY CCG	90.1
NOTTINGHAM CITY CCG	89.8
CORBY CCG	89.1
LINCOLNSHIRE WEST CCG	73.5
LINCOLNSHIRE EAST CCG	71.0
MANSFIELD AND ASHFIELD CCG	68.7
HARDWICK CCG	67.2
NEWARK AND SHERWOOD CCG	66.5
ENGLAND	63.7
NORTH DERBYSHIRE CCG	62.8
SOUTHERN DERBYSHIRE CCG	62.8
EREWASH CCG	62.2
NOTTINGHAM NORTH AND EAST CCG	61.3
SOUTH LINCOLNSHIRE CCG	60.8
NENE CCG	58.7
WEST LEICESTERSHIRE CCG	57.0
EAST LEICESTERSHIRE AND RUTLAND CCG	53.8
NOTTINGHAM WEST CCG	53.7
SOUTH WEST LINCOLNSHIRE CCG	49.0
RUSHCLIFFE CCG	35.7

CVD PREMATURE MORTALITY RATE 2009-2014



NUMBER OF PREMATURE DEATHS DUE TO CVD IN 2014

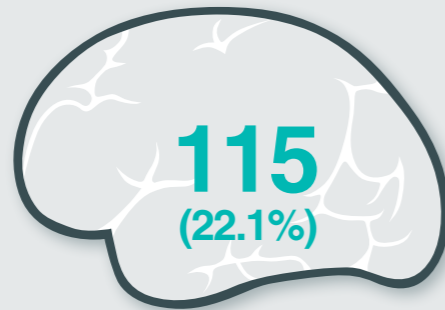
210

LEADING CAUSES OF YEARS OF LIFE LOST IN ENGLAND GLOBAL BURDEN OF DISEASE STUDY 2013

1	Ischaemic heart disease
2	Lung cancer
3	Cerebrovascular disease
4	COPD
5	Alzheimer's disease
11	Other cardiovascular

ATRIAL FIBRILLATION

STROKE ADMISSIONS WITH KNOWN AF 2014-15



NUMBER OF UNDIAGNOSED AF PATIENTS...

2,933

% observed to expected AF prevalence

69%

904

High risk AF patients NOT on anticoagulation (24.6%)

*includes exception reported

CCG EXCEPTION REPORTING FOR ANTICOAGULATION

13.9%

PRACTICE RANGE OF EXCEPTION REPORTING



BLOOD PRESSURE

NUMBER OF PEOPLE WITH UNDIAGNOSED HYPERTENSION



59% observed to expected HYPERTENSION PREVALENCE

Actual = 14.5%

Estimated = 24.5%

10,143

Hypertensive patients with BP NOT TO QOF target 150/90 (18.7%)

*includes exception reported

CHRONIC KIDNEY DISEASE

NUMBER OF PEOPLE WITH UNDIAGNOSED CKD



70% observed to expected CKD PREVALENCE

Actual = 4.5%

Estimated = 6.7%

3,494

CKD patients with BP NOT TO QOF target 140/85 (26.0%)

*includes exception reported

FAMILIAL HYPERCHOLESTEROLEMIA (FH)

HEART ATTACKS IN PEOPLE UNDER 50 - 2012-13 to 2014/15



Estimated people with FH 750 - 1,501
Rate = 1 per 500 Rate = 1 per 250

Estimated 15% diagnosed with FH 113 - 225
Rate = 1 per 500 Rate = 1 per 250

SMOKING DATA BY LOCAL AUTHORITY

Local Authority	Smoking Prevalence in adults - current smokers (2014)	Smoking prevalence in adults in routine and manual occupations - current smokers (2014)	Successful quitters at 4 weeks per 100,000 smokers (2014-15)
Derby	18.7	33.1	1,351
Derbyshire	19.9	31.5	1,559
Leicester	20.7	28.9	3,214
Leicestershire	17.0	28.9	3,052
Rutland	14.1	29.6	2,456
Lincolnshire	17.5	25.6	3,567
Northamptonshire	19.3	32.0	2,396
Nottingham	24.2	28.1	2,804
Nottinghamshire	17.5	27.8	3,256
East Midlands	18.8	29.2	2,727

Better Similar Worse Compared to England average

HEART FAILURE

HEART FAILURE PATIENTS WITH LVSD

March 2014	826
March 2015	1,100

HEART FAILURE ADMISSIONS

Admissions	2013-14	2014-15
Primary Diagnosis#	517	533
Secondary Diagnosis	1,686	2,119

Admission Costs	2013-14	2014-15
Primary Diagnosis#	£1,724,000	£1,785,000
Secondary Diagnosis	£5,484,000	£6,099,000

Admission Rate per 1000 HF Patients	2014-15	E.Mids Av
Primary Diagnosis#	153	179
Secondary Diagnosis	608	749

343 Heart Failure LVSD patients NOT on dual therapy ACE inhibitor/ARB and a betablocker (31.2%)

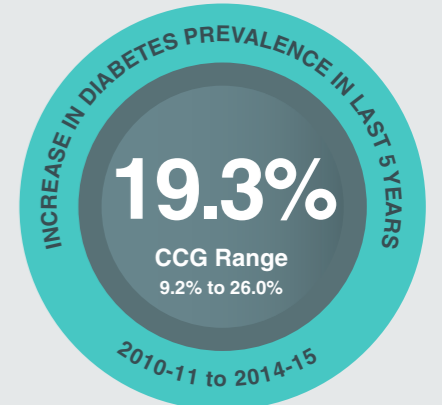
DIABETIC FOOT AMPUTATIONS

APRIL 2010 - MARCH 2013		Rate per 1000 diabetic patients
Total	Number	
Total	89	1.70
Major	35	0.67
Minor	54	1.03

APRIL 2011 - MARCH 2014		Rate per 1000 diabetic patients
Total	Number	
Total	112	2.01
Major	40	0.72
Minor	72	1.3

East Midlands Rate in 2011 - 2014 Total - 2.37 Major - 0.82 Minor - 1.55

DIABETES



18% Practice Participation in National Diabetes Audit 2014-15

8 CARE PROCESSES 2014-15

TYPE 1 - 38.4%
England = 39.6%
E.Mids CCG Range = 29.3 - 54.0%

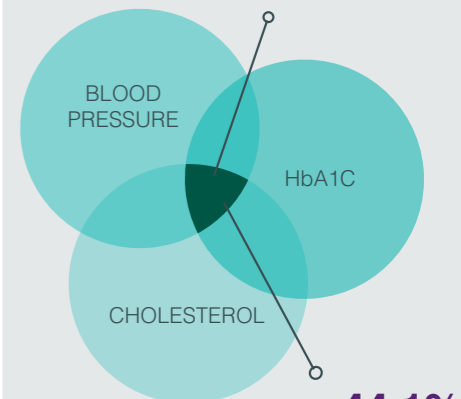
Lowest 8 Care Process 56.0% Urine Albumin

TYPE 2 - 56.1%
England = 59.0%
E.Mids CCG Range = 51.2 - 73.8%

Lowest 8 Care Process 70.1% Urine Albumin

% OF DIABETIC PATIENTS MEETING 3 TARGETS 2014-15

TYPE 1 - 23.6%
England = 19.3%
E.Mids CCG Range = 14.6 - 28.5%



TYPE 2 - 44.1%
England = 41.3%
E.Mids CCG Range = 35.6 - 44.6%