

# CARDIOVASCULAR DISEASE PREVENTION INFOGRAPHIC

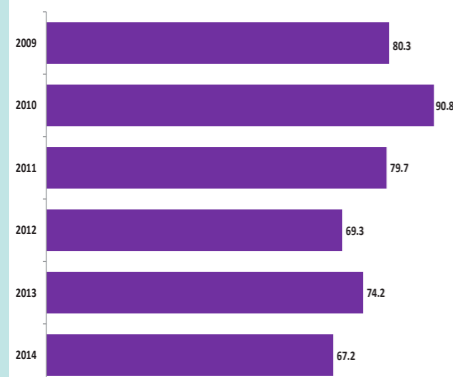
# NOTTINGHAM NORTH AND EAST CCG

## CVD PREMATURE MORTALITY

### CVD PREMATURE MORTALITY

CCG Name	2014
LEICESTER CITY CCG	90.1
NOTTINGHAM CITY CCG	89.8
CORBY CCG	89.1
LINCOLNSHIRE WEST CCG	73.5
LINCOLNSHIRE EAST CCG	71.0
MANSFIELD AND ASHFIELD CCG	68.7
HARDWICK CCG	67.2
NEWARK AND SHERWOOD CCG	66.5
<b>ENGLAND</b>	<b>63.7</b>
NORTH DERBYSHIRE CCG	62.8
SOUTHERN DERBYSHIRE CCG	62.8
EREWASH CCG	62.2
NOTTINGHAM NORTH AND EAST CCG	61.3
SOUTH LINCOLNSHIRE CCG	60.8
NENE CCG	58.7
WEST LEICESTERSHIRE CCG	57.0
EAST LEICESTERSHIRE AND RUTLAND CCG	53.8
NOTTINGHAM WEST CCG	53.7
SOUTH WEST LINCOLNSHIRE CCG	49.0
RUSHCLIFFE CCG	35.7

### CVD PREMATURE MORTALITY RATE 2009-2014



### NUMBER OF PREMATURE DEATHS DUE TO CVD IN 2014

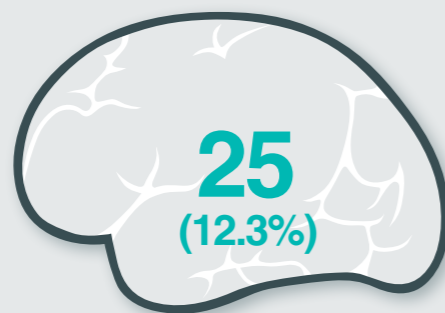
**92**

### LEADING CAUSES OF YEARS OF LIFE LOST IN ENGLAND GLOBAL BURDEN OF DISEASE STUDY 2013

1	Ischaemic heart disease
2	Lung cancer
3	Cerebrovascular disease
4	COPD
5	Alzheimer's disease
11	Other cardiovascular

## ATRIAL FIBRILLATION

### STROKE ADMISSIONS WITH KNOWN AF 2014-15



### NUMBER OF UNDIAGNOSED AF PATIENTS...

**1,437**

% observed to expected AF prevalence

**64%**

**494**

High risk AF patients **NOT** on anticoagulation **(35.2%)**

\*includes exception reported

CCG EXCEPTION REPORTING FOR ANTICOAGULATION

**22.2%**

PRACTICE RANGE OF EXCEPTION REPORTING



## BLOOD PRESSURE

### NUMBER OF PEOPLE WITH UNDIAGNOSED HYPERTENSION



**55%** observed to expected **HYPERTENSION PREVALENCE**  
Actual = **14.8%**  
Estimated = **26.7%**

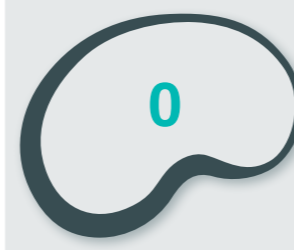
**3,950**

Hypertensive patients with BP **NOT TO** QOF target 150/90 **(18.0%)**

\*includes exception reported

## CHRONIC KIDNEY DISEASE

### NUMBER OF PEOPLE WITH UNDIAGNOSED CKD



**109%** observed to expected **CKD PREVALENCE**  
Actual = **7.1%**  
Estimated = **6.9%**

**2,198**

CKD patients with BP **NOT TO** QOF target 140/85 **(26.0%)**

\*includes exception reported

## FAMILIAL HYPERCHOLESTEROLEMIA (FH)

### HEART ATTACKS IN PEOPLE UNDER 50 - 2012-13 to 2014/15



Estimated people with FH **298 - 596**  
Rate = 1 per 500    Rate = 1 per 250

Estimated **15%** diagnosed with FH  
**45 - 89**  
Rate = 1 per 500    Rate = 1 per 250

## SMOKING DATA BY LOCAL AUTHORITY

Local Authority	Smoking Prevalence in adults - current smokers (2014)	Smoking prevalence in adults in routine and manual occupations - current smokers (2014)	Successful quitters at 4 weeks per 100,000 smokers (2014-15)
Derby	18.7	33.1	1,351
Derbyshire	19.9	31.5	1,559
Leicester	20.7	28.9	3,214
Leicestershire	17.0	28.9	3,052
Rutland	14.1	29.6	2,456
Lincolnshire	17.5	25.6	3,567
Northamptonshire	19.3	32.0	2,396
Nottingham	24.2	28.1	2,804
Nottinghamshire	17.5	27.8	3,256
East Midlands	18.8	29.2	2,727

Better    Similar    Worse    Compared to England average

## HEART FAILURE

### HEART FAILURE PATIENTS WITH LVSD

March 2014	<b>227</b>
March 2015	<b>219</b>

### HEART FAILURE ADMISSIONS

Admissions	2013-14	2014-15
Primary Diagnosis#	172	191
Secondary Diagnosis	691	865

Admission Costs	2013-14	2014-15
Primary Diagnosis#	£615,000	£603,000
Secondary Diagnosis	£2,019,000	£2,677,000

Admission Rate per 1000 HF Patients	2014-15	E.Mids Av
Primary Diagnosis#	199	179
Secondary Diagnosis	902	749

**81** Heart Failure LVSD patients **NOT** on dual therapy ACE inhibitor/ARB and a betablocker **(37.0%)**

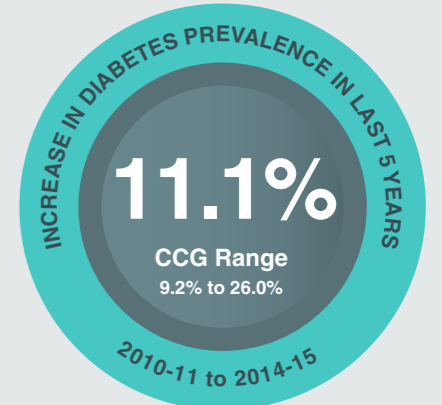
## DIABETIC FOOT AMPUTATIONS

	Number	Rate per 1000 diabetic patients
Total	55	2.62
Major	19	0.90
Minor	36	1.71

	Number	Rate per 1000 diabetic patients
Total	66	3.03
Major	22	1.01
Minor	44	2.02

East Midlands Rate in 2011 - 2014  
Total - 2.37    Major - 0.82    Minor - 1.55

## DIABETES



**91%** Practice Participation in National Diabetes Audit 2014-15

**8** CARE PROCESSES 2014-15

**TYPE 1 - 29.3%**  
England = 39.6%  
E.Mids CCG Range = 29.3 - 54.0%

Lowest 8 Care Process  
49.9% Urine Albumin

**TYPE 2 - 65.3%**  
England = 59.0%  
E.Mids CCG Range = 51.2 - 73.8%

Lowest 8 Care Process  
78.1% Urine Albumin

% OF DIABETIC PATIENTS MEETING 3 TARGETS 2014-15

**TYPE 1 - 17.9%**  
England = 19.3%  
E.Mids CCG Range = 14.6 - 28.5%

