

CARDIOVASCULAR DISEASE PREVENTION INFOGRAPHIC

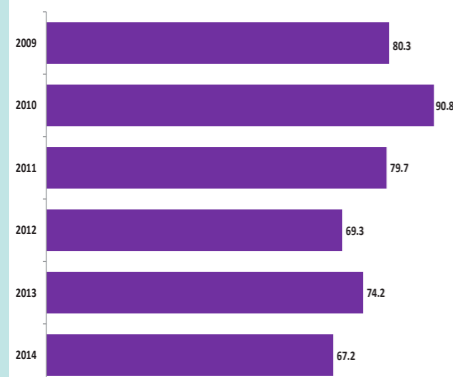
RUSHCLIFFE CCG

CVD PREMATURE MORTALITY

CVD PREMATURE MORTALITY

CCG Name	2014
LEICESTER CITY CCG	90.1
NOTTINGHAM CITY CCG	89.8
CORBY CCG	89.1
LINCOLNSHIRE WEST CCG	73.5
LINCOLNSHIRE EAST CCG	71.0
MANSFIELD AND ASHFIELD CCG	68.7
HARDWICK CCG	67.2
NEWARK AND SHERWOOD CCG	66.5
ENGLAND	63.7
NORTH DERBYSHIRE CCG	62.8
SOUTHERN DERBYSHIRE CCG	62.8
EREWASH CCG	62.2
NOTTINGHAM NORTH AND EAST CCG	61.3
SOUTH LINCOLNSHIRE CCG	60.8
NENE CCG	58.7
WEST LEICESTERSHIRE CCG	57.0
EAST LEICESTERSHIRE AND RUTLAND CCG	53.8
NOTTINGHAM WEST CCG	53.7
SOUTH WEST LINCOLNSHIRE CCG	49.0
RUSHCLIFFE CCG	35.7

CVD PREMATURE MORTALITY RATE 2009-2014



NUMBER OF PREMATURE DEATHS DUE TO CVD IN 2014

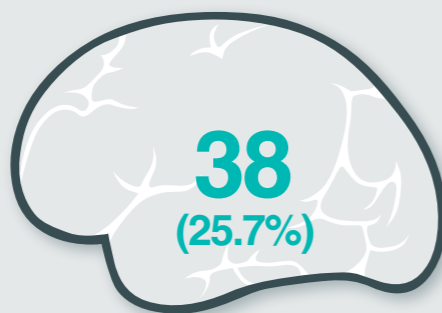
45

LEADING CAUSES OF YEARS OF LIFE LOST IN ENGLAND GLOBAL BURDEN OF DISEASE STUDY 2013

1	Ischaemic heart disease
2	Lung cancer
3	Cerebrovascular disease
4	COPD
5	Alzheimer's disease
11	Other cardiovascular

ATRIAL FIBRILLATION

STROKE ADMISSIONS WITH KNOWN AF 2014-15



NUMBER OF UNDIAGNOSED AF PATIENTS...

1,157

% observed to expected AF prevalence

67%

378

High risk AF patients **NOT** on anticoagulation (30.1%)

*includes exception reported

CCG EXCEPTION REPORTING FOR ANTICOAGULATION

18.5%

PRACTICE RANGE OF EXCEPTION REPORTING



BLOOD PRESSURE

NUMBER OF PEOPLE WITH UNDIAGNOSED HYPERTENSION



55% observed to expected HYPERTENSION PREVALENCE

Actual = **14.0%**

Estimated = **25.2%**

2,640

Hypertensive patients with BP **NOT TO** QOF target 150/90 (15.3%)

*includes exception reported

CHRONIC KIDNEY DISEASE

NUMBER OF PEOPLE WITH UNDIAGNOSED CKD



95% observed to expected CKD PREVALENCE

Actual = **6.5%**

Estimated = **7.3%**

1,495

CKD patients with BP **NOT TO** QOF target 140/85 (23.3%)

*includes exception reported

FAMILIAL HYPERCHOLESTEROLEMIA (FH)

HEART ATTACKS IN PEOPLE UNDER 50 - 2012-13 to 2014/15



Estimated people with FH **247 - 494**

Rate = 1 per 500 Rate = 1 per 250

Estimated **15%** diagnosed with FH

37 - 74

Rate = 1 per 500 Rate = 1 per 250

SMOKING DATA BY LOCAL AUTHORITY

Local Authority	Smoking Prevalence in adults - current smokers (2014)	Smoking prevalence in adults in routine and manual occupations - current smokers (2014)	Successful quitters at 4 weeks per 100,000 smokers (2014-15)
Derby	18.7	33.1	1,351
Derbyshire	19.9	31.5	1,559
Leicester	20.7	28.9	3,214
Leicestershire	17.0	28.9	3,052
Rutland	14.1	29.6	2,456
Lincolnshire	17.5	25.6	3,567
Northamptonshire	19.3	32.0	2,396
Nottingham	24.2	28.1	2,804
Nottinghamshire	17.5	27.8	3,256
East Midlands	18.8	29.2	2,727

Better Similar Worse Compared to England average

HEART FAILURE

HEART FAILURE PATIENTS WITH LVSD

March 2014	178
March 2015	376

HEART FAILURE ADMISSIONS

Admissions	2013-14	2014-15
Primary Diagnosis#	132	170
Secondary Diagnosis	591	672

Admission Costs	2013-14	2014-15
Primary Diagnosis#	£420,000	£589,000
Secondary Diagnosis	£1,820,000	£2,065,000

Admission Rate per 1000 HF Patients	2014-15	E.Mids Av
Primary Diagnosis#	179	179
Secondary Diagnosis	707	749

152 Heart Failure LVSD patients **NOT** on dual therapy ACE inhibitor/ARB and a betablocker (**40.4%**)

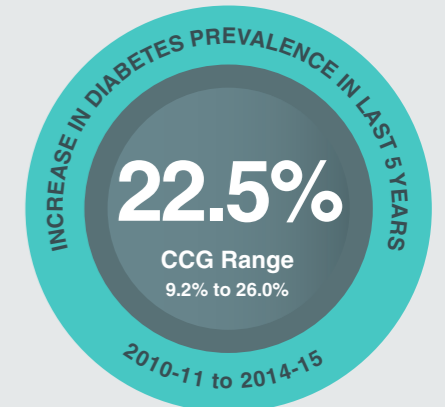
DIABETIC FOOT AMPUTATIONS

APRIL 2010 - MARCH 2013		Rate per 1000 diabetic patients
Total	Number	
Total	34	2.43
Major	10	0.71
Minor	24	1.71

APRIL 2011 - MARCH 2014		Rate per 1000 diabetic patients
Total	Number	
Total	34	2.29
Major	9	0.61
Minor	25	1.68

East Midlands Rate in 2011 - 2014
Total - 2.37 Major - 0.82 Minor - 1.55

DIABETES



92% Practice Participation in National Diabetes Audit 2014-15

8 CARE PROCESSES 2014-15

TYPE 1 - 42.2%
England = 39.6%
E.Mids CCG Range = 29.3 - 54.0%

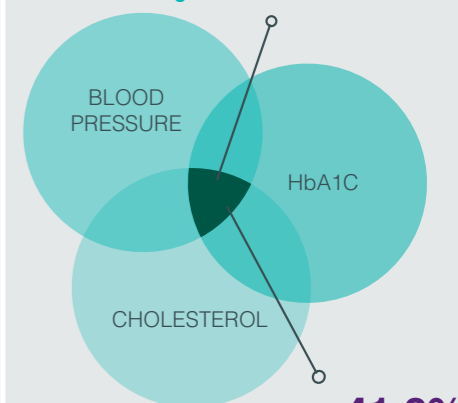
Lowest 8 Care Process
64.5% Urine Albumin

TYPE 2 - 70.5%
England = 59.0%
E.Mids CCG Range = 51.2 - 73.8%

Lowest 8 Care Process
83.9% Urine Albumin

% OF DIABETIC PATIENTS MEETING 3 TARGETS 2014-15

TYPE 1 - 21.7%
England = 19.3%
E.Mids CCG Range = 14.6 - 28.5%



TYPE 2 - 41.8%
England = 41.3%
E.Mids CCG Range = 35.6 - 44.6%