

Making *Future in Mind* a reality for children and young people in the West Midlands

Kate Branchett

20th September 2016



Background

Future in mind

Promoting, protecting and improving our children and young people's mental health and wellbeing



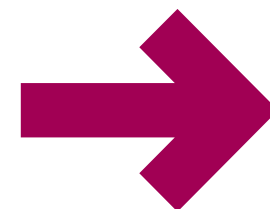
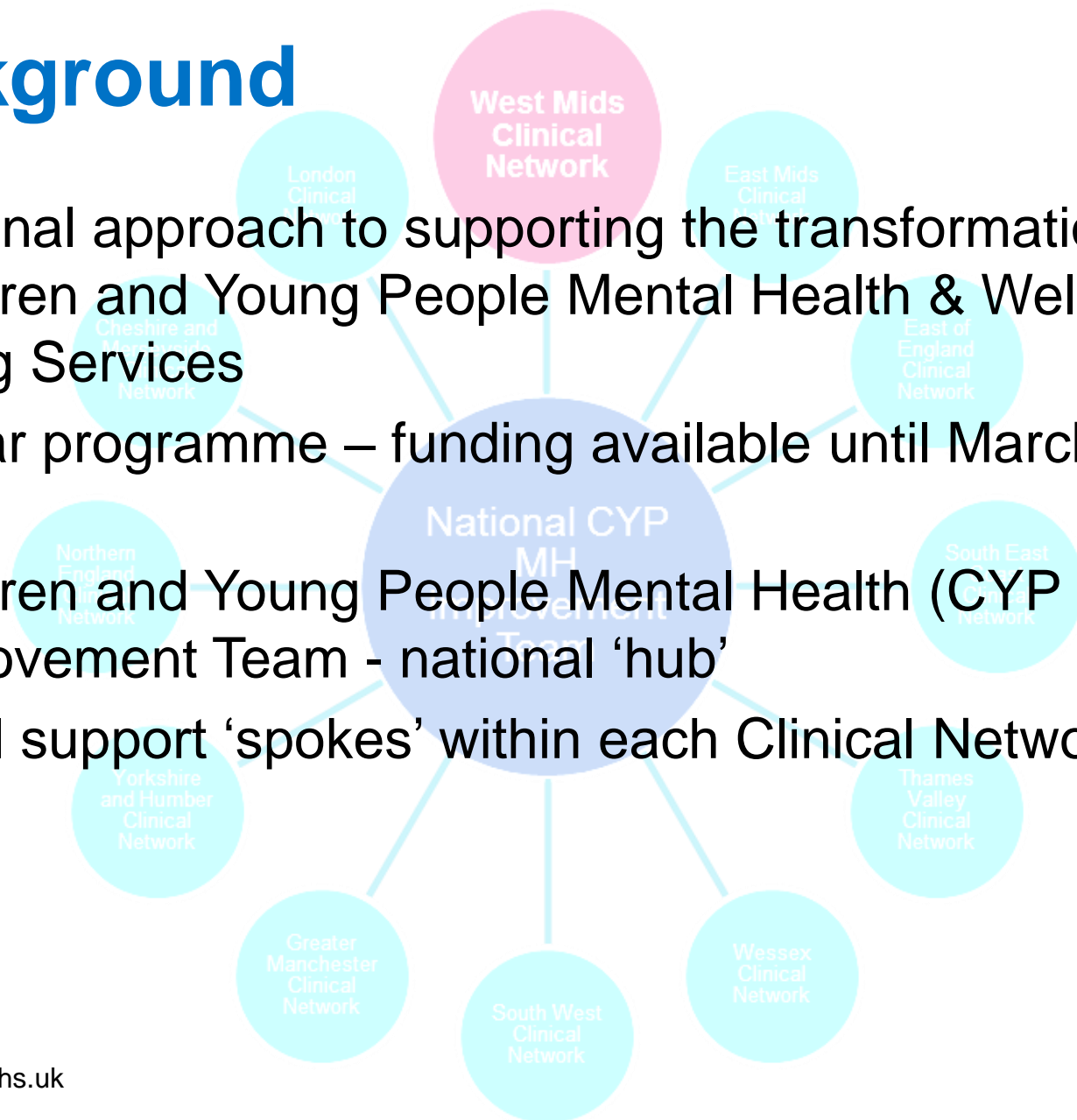
- Unified clarity of purpose through national priorities and recommendations:
 - Promoting resilience, prevention and early intervention
 - Improving access to effective support – a system without tiers
 - Care for the most vulnerable
 - Accountability and transparency
 - Developing the workforce

However, we cannot ignore additional local issues



Background

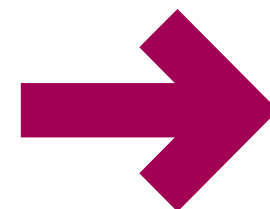
- National approach to supporting the transformation of Children and Young People Mental Health & Well Being Services
- 4 year programme – funding available until March 2019
- Children and Young People Mental Health (CYP MH) Improvement Team - national 'hub'
- Local support 'spokes' within each Clinical Network



West Midlands Clinical Network (Mental Health, Dementia and Neurological Conditions)

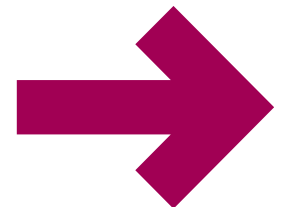
CYP MH and Wellbeing Improvement Team

- Kate Branchett: **Quality Improvement Manager**
- Carolyn Gavin - **Clinical Lead**
- TBA - **Local Authority Lead**
- Sharon Binyon - **Clinical Director**
- Carol Reilly - **Head of Clinical Network**
- Lisa Hayes - **Network Administrator** – Mental Health, Dementia and Neurological Conditions Network



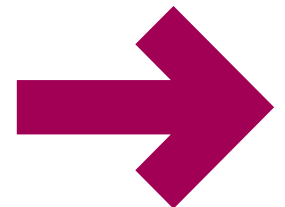
Future in Mind – Making it happen

- Place the emphasis on building resilience, promoting good mental health, prevention and early intervention
- Simplify structures and improve access
- Deliver a clear joined up approach
- Harness the power of information
- Sustain a culture of continuous evidence-based service improvement
- Make the right investments



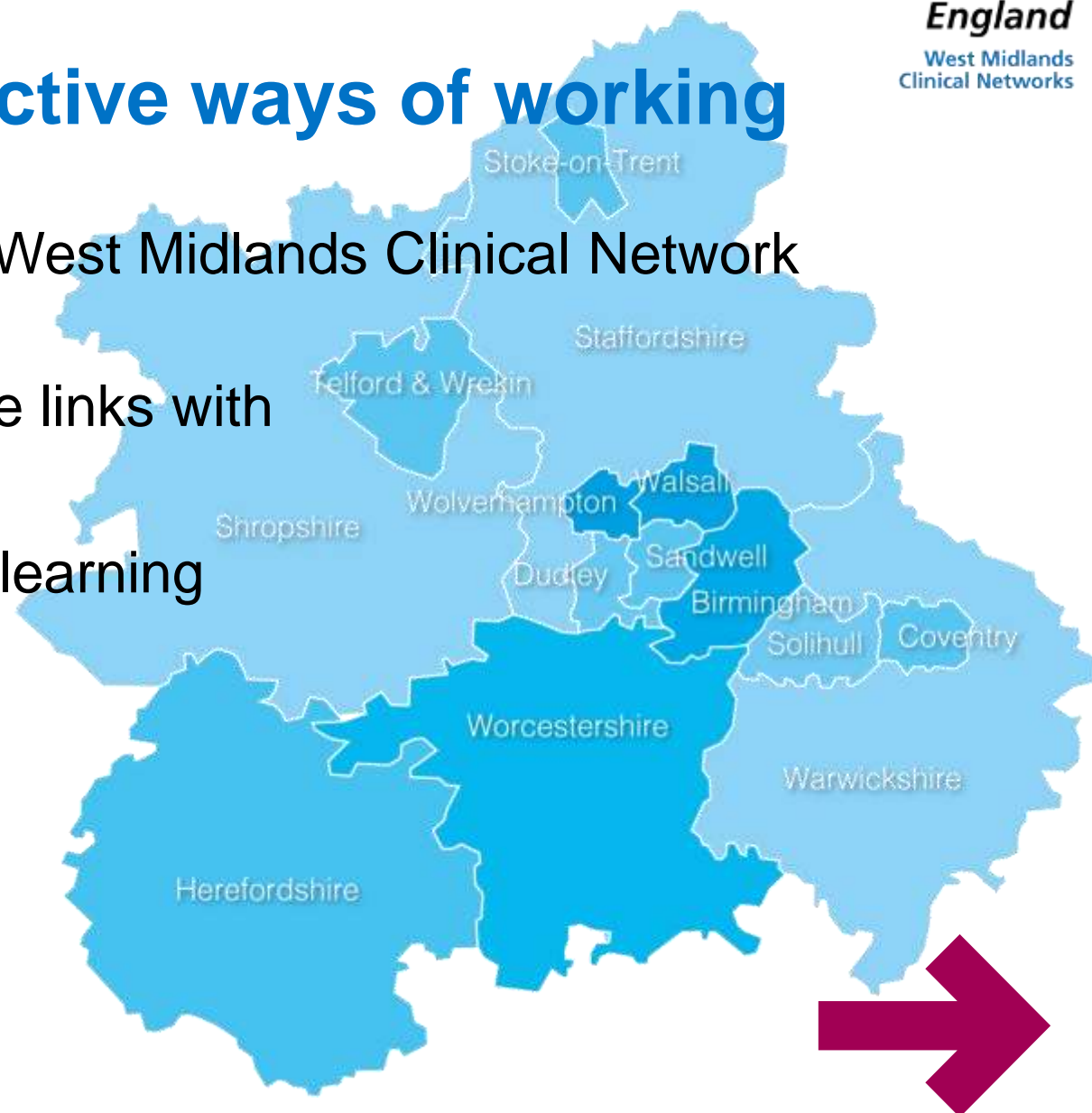
Specific deliverables for Clinical Networks:

- Establish effective ways of working
- Establish and develop local CYP MH learning communities
- Support the development of an effective, skilled local CYP MH workforce across the CN footprint.
- Support areas to prepare and plan for key priorities for CYP MH including:
 - ➔ Community based mental health crisis response for CYP, including S136 (health based places of safety)
 - ➔ Development of all age liaison services within A&E and on inpatient wards,
 - ➔ Access and waiting times,
 - ➔ New Models of Care
- Support the refresh of Local Transformation Plans and their integration into Sustainability and Transformation Plans (STPs) and work going forward across the Clinical Network footprint.



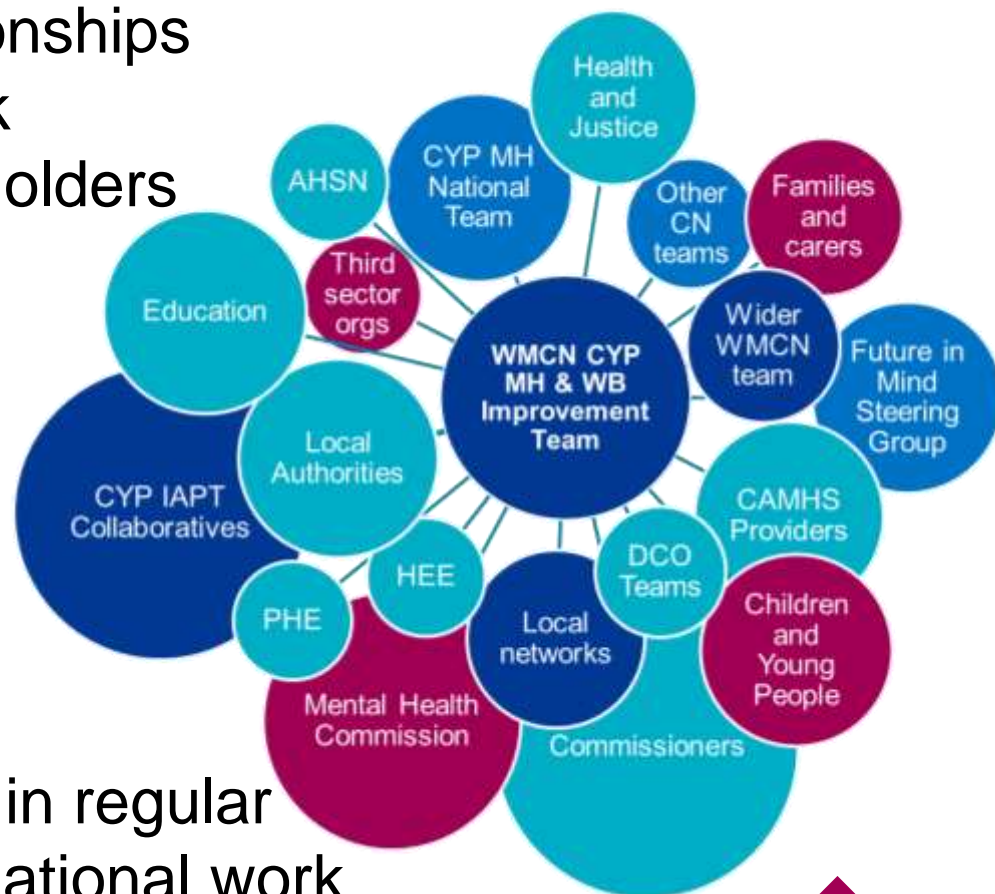
Establish effective ways of working

- Work across the West Midlands Clinical Network footprint
- Establish effective links with key stakeholders
- Facilitate shared learning



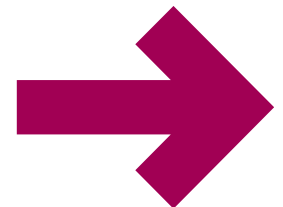
Establish effective ways of working

- **LOCALLY:** Develop relationships with wider Clinical Network colleagues and key stakeholders in support of CYP MH Transformation
- **REGIONALLY:** Establish models of communication and influence with wider system colleagues
- **NATIONALLY:** Participate in regular meetings to contribute to national work streams and priorities and ensure national key priorities are built into local plans



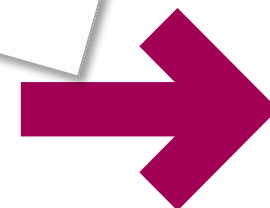
Support improvements in local commissioning arrangements

- Regular forums, workshops and masterclasses
- Task and finish groups to support improvements in specific CYP MH topic areas
- Support improvements in joint commissioning - coordinating and facilitating engagement with Local Authority partners
- Support collaborative commissioning development for 'Tier 4' CAMHS and develop clinical networks across tiers 3 and 4



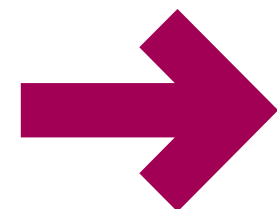
Support the refresh of LTPs and their integration into STPs

- **Work with NHS England DCO team** and other partners to identify and help local partnerships requiring additional targeted support
- **Identify potential risk**
- **Provide** local intelligence and expertise to sense check plans and work going forward
- **West Midlands Future in Mind Steering Group**



Establish and develop local CYP MH learning communities

- Ensure the voices of children, young people and their families and carers are amplified and heard, enabling health and social inequalities and inequities to be identified, understood and acted upon
- Facilitate shared learning and quality improvement networking for clinicians, commissioners and all stakeholders – **event 14th November**
- Establish, strengthen and develop excellent communication channels



Support the delivery of 100% access to CYP IAPT Programme.

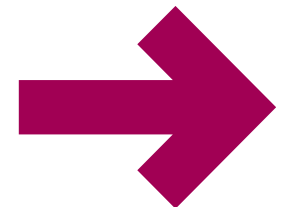
- CYP IAPT Collaboratives
- Local and regional approach



Support development of an effective, skilled local CYP MH workforce

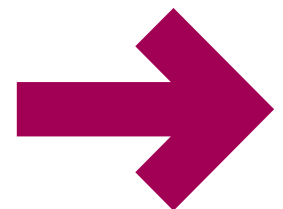
- Support HEE (WM) in their scoping project, working with local commissioner and providers to understand local workforce needs and gaps
- Support the development of local system wide workforce strategies, in order to support increased capacity and capability
- Influence and contribute to national workforce strategy/priorities. Give feedback on local issues to the national teams

NHS
Health Education England



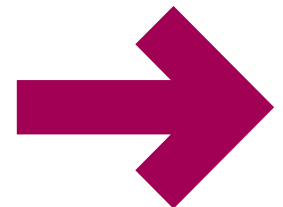
Support improvements in the care for specific groups

- Identify specific projects to deliver improvements in effectiveness & efficiency locally for specific groups (eg looked after children)
- Support and co-ordinate specific projects, once identified
- Health and Justice



Support areas to prepare and plan for key priorities for CYP MH including:

- Community based mental health crisis response for CYP, including S136 (health based places of safety)
- Development of all age liaison services within A&E and on inpatient wards
- Access and waiting times
- New Models of Care



Start out

Define &
scope

If *'Future in Mind'* is the solution...

What are the problems?...

**And how can we
address them
locally?**



**Thank you for listening.
Any questions?**

Kate.branchett@nhs.net

07721 231695



@KateBranchett

