

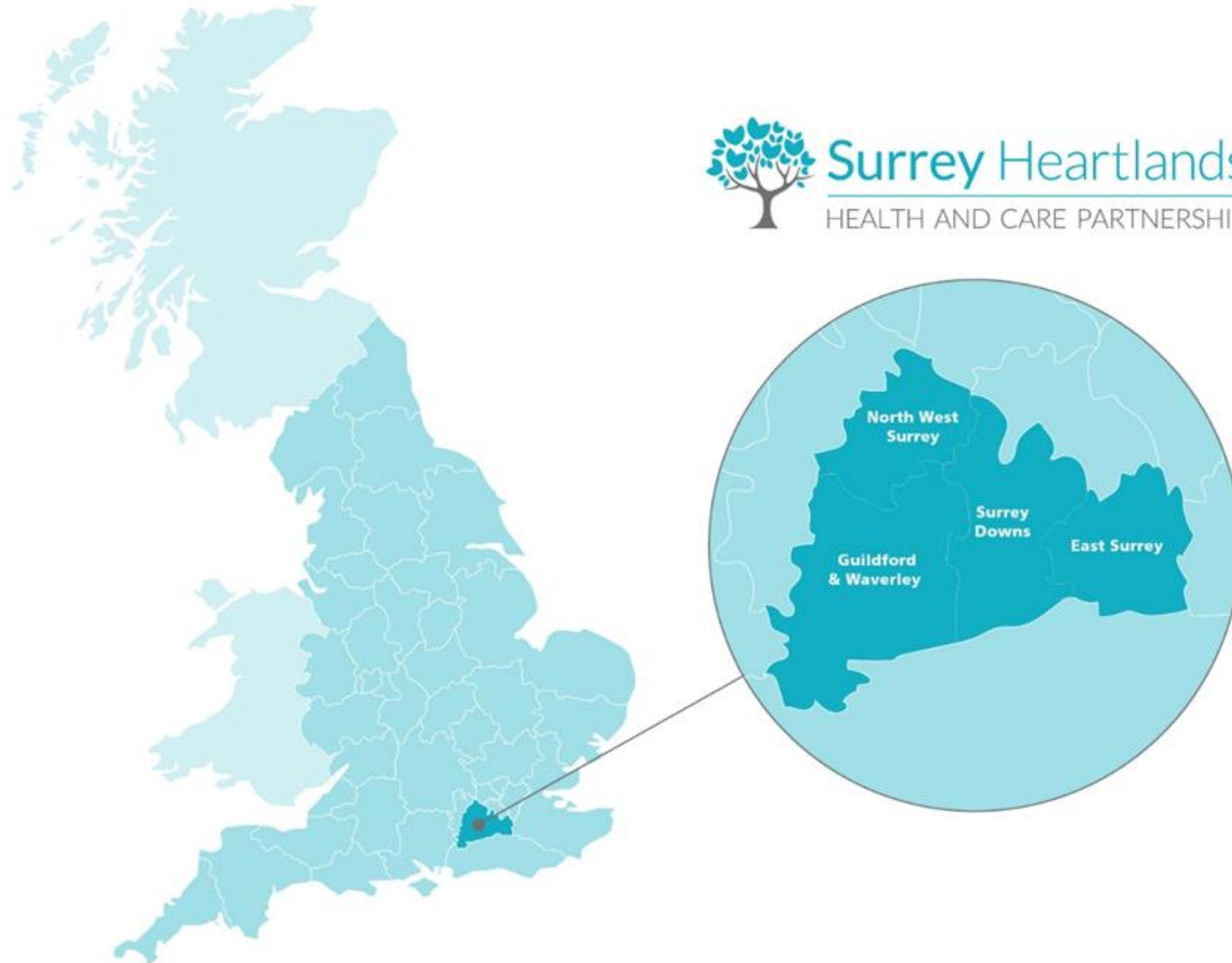
Chair Appointments – Surrey Heartlands ICS

June 2021

NHS England and NHS Improvement



About the ICS area



- Covers a population of over 1 million
- Combined health revenue allocation of over £1.5bn and combined social care and public health budget of £317m
- Four Place-based partnerships
- 104 practices working within 24 primary care networks (PCNs)
- **H** 4 acute hospital sites
- **H** 11 community hospital sites
- 2 community service providers
- 1 mental health provider including 3 inpatient units and 33 community sites
- 1 upper tier local authority (Surrey County Council) operating adult & children's social services
- 9 District/Borough Councils
- NHS Surrey Heartlands CCG

CCGs and the Local Authorities

CCG	Local Authority (LA)
NHS Surrey Heartlands CCG	Surrey County Council



Providers and CQC ratings



Provider	Current CQC rating
Ashford & St Peter's Hospitals NHS Foundation Trust	Good
Epsom and St Helier University Hospitals NHS Trust	Good
Royal Surrey NHS Foundation Trust	Good
Surrey and Sussex Healthcare NHS Trust	Outstanding
CSH Surrey	Good
First Community Health Care	Outstanding
Surrey and Borders Partnership NHS Foundation Trust	Good
South East Coast Ambulance Service NHS Foundation Trust	Good



Existing organisations and Accountable Officers (CCGs & Providers)

CCG Name	Chair	Accountable Officer
NHS Surrey Heartlands CCG	Dr Charlotte Caniff	Dr Claire Fuller



Provider Name	Chair	CEO
Ashford & St Peter's Hospitals NHS Foundation Trust	Andy Field	Suzanne Rankin
Epsom and St Helier University Hospitals NHS Trust	Gillian Norton	Daniel Elkeles
Royal Surrey NHS Foundation Trust	Sue Sjuve	Louise Stead
Surrey and Sussex Healthcare NHS Trust	Richard Shaw	Michael Wilson CBE
CSH Surrey	Andy Field	Steve Flanagan
First Community Health and Care	Florence Barras	Sarah Billiard
Surrey and Borders Partnership NHS Foundation Trust	Dr Ian McPherson	Graham Wareham

Local Authority *Accountable officers*



Local Authority	Leader	Chief Executive	Director of Adult Social Care	Director of Public Health
Surrey County Council	Cllr. Tim Oliver	Joanna Killian	Simon White	Ruth Hutchinson



Start well

The first five years of a child's life are critical to their future developing. Helping children to get the best start in life is both good for them and for society.

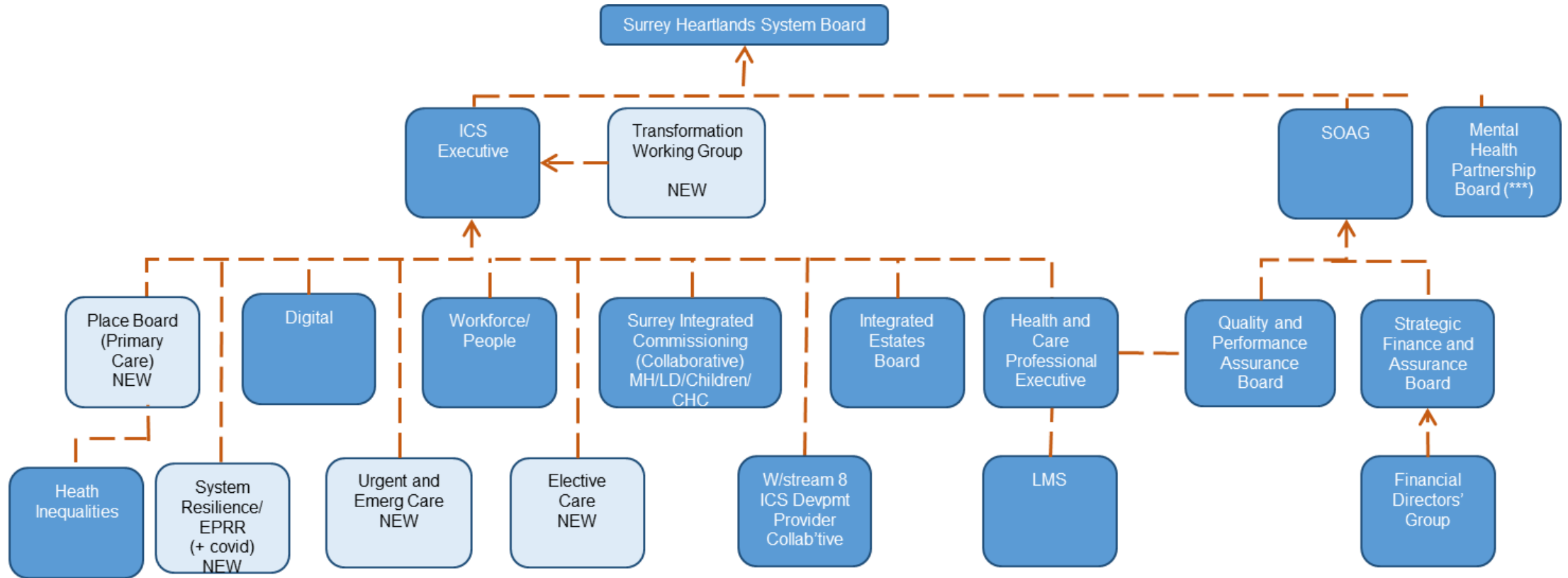
Age well

Over the next ten years the number of people aged 65+ living in Surrey is expected to rise by over 18%. It is important to create a health and care system that encourages healthier living so people can enjoy later life.

Live well

Most people in Surrey live healthier lives than the average UK citizen but by focusing on the wider issues that impact on our health and wellbeing, such as the environment we live in, we can reduce inequalities in people's health even further.

Draft ICS governance arrangements



*** reports direct to Health & Wellbeing Board

← - - - - - Assurance Flows - - - - - →

Safeguarding and IG TBC

ICS Development Plan



DIRECTION AND COMMITMENT: A thriving health and care system that provides world class placed-based health and care for our populations



System Design & Governance

- Partnerships in Place
- Provider collaboratives
- ICS NHS Body
- ICS Health & Care Partnership
- Supra ICS arrangements



ICS new duties

- Specialised services
- Primary care
- Health & justice
- PH Screening
- EPRR (2 to 1)



Leadership and Culture

- System and leadership team development
- Clinical and multi professional leadership
- People plans



Financial Framework

- Financial delivery
- Risk management



Performance & Assurance

- Quality
- System resilience & performance
- Intelligence and Population Health Management



Commissioning & Technical

- Future ways of working
- Formal CCG to ICS transfer



Infrastructure & capability

- Digital & Data
- Public Participation and Social Research
- Community involvement
- Communications & Engagement