

9th Annual Prevention and Management of Stillbirth Meeting  
**#nwpregnancyloss**



@GMEC\_SCN  
@GM\_ICP



Friday 3 March 2023

**1:00pm – 4:30pm with lunch available from 12noon**



Bolton Stadium Hotel, De Havilland Way, Bolton, BL6 6SF

**Macron/Wanderers Suite** with ample free onsite parking available (carpark A – hotel carpark). For direction, visit <https://www.boltonstadiumhotel.co.uk/location> and for public transport links, please visit <https://tfgm.com/>

### **Our aim/purpose of the day**

Our 9th annual meeting to bring our colleagues in maternity and obstetrics together to update on the programme of work around the management of a perinatal loss, be it stillbirth, intrauterine fetal death and second trimester pregnancy loss.

### **Target audience**

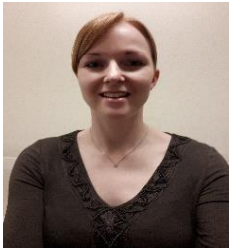
Obstetricians (trainees and consultants) midwives, pathologists, ultra-sonographers, gynae nurses and all maternity service support professionals involved in the care of women and their families.

### **Queries**

Should you have any queries, please email Events and Engagement Manager  
[michelle.davies9@nhs.net](mailto:michelle.davies9@nhs.net)  
[michelle.davies9@england.nhs.uk](mailto:michelle.davies9@england.nhs.uk)

12noon – 1:00pm		
Lunch and registration in Macron/Wanderers Suite		
1:00 – 1:05pm	Welcome and introductions	Dr Elaine Church, Consultant Obstetrician, Manchester University NHS FT (Saint Mary's, Wythenshawe) & Chair of the GMEC SCN Perinatal Loss Special Interest Group (SIG)
1:05 – 1:30pm	Parents experiences of bereavement care during COVID	Greater Manchester and Eastern Cheshire Specialist Bereavement Midwives <b>video montage</b>
1:30 – 1:50pm	Historic stillbirths; helping families  My brother † A family's perspective of stillbirth in the 70's	Vicky Holmes, Midwifery Matron Bereavement Care (MCS), Manchester University NHS FT (Saint Mary's, Oxford Road)
1:50 – 2:10pm	The GMEC LMNS Equity and Equality Plan	Eileen Stringer, Clinical Lead Midwife, GMEC LMNS and GMEC SCN
2:10 – 2:30pm		
Refreshment break		
2:30 – 2:50pm	New national guidance for perinatal post-mortem and placenta	Dr Gauri Batra, Consultant Paediatric, Placental & Perinatal Histopathologist, Manchester University NHS FT (Royal Manchester Children's)
2:50 – 3:10pm	Still Life † An engagement project with Jewish women who have experienced stillbirth	Suzanne Thomas, Matron for Fetal Surveillance, Manchester University NHS FT (Saint Mary's, Oxford Road)
3:10 – 3:30pm	Genetic Literacy Group	Dr Kylie Watson, Consultant Midwife, Saint Mary's Oxford Road & Saint Mary's at Wythenshawe, Manchester University NHS FT & Honorary Lecturer, University of Manchester
3:30 – 3:50pm	Ellies Gift (Following pilot) The Ellie's Gift Project	Lucy Livesey
3:50 – 4:10pm	Neonatal Deaths MBRRACE PMRT/Ethnicity	Dr Lydia Bowden, Complex & Palliative Care Lead, Consultant Neonatologist, Medical Examiner, Neonatal Unit - Royal Oldham Hospital, Northern Care Alliance NHS FT

4:10 – 4:25pm	Panel Q&A	
4:25 – 4:30pm	Closing remarks	Dr Elaine Church



Dr Elaine Church graduated from the University of Manchester obtaining her MBChB in 2004. She completed her specialty training in Obstetrics and Gynaecology in the North West Deanery. She was awarded the Prize Medal for the MRCOG Part 2 exam in 2010. She worked as a Consultant Obstetrician and Labour Ward Lead at Wrightington, Wigan and Leigh from 2014 – 2016.

Since December 2016 she has worked as a Consultant Obstetrician at Wythenshawe Hospital, where she is the Clinical Lead for Obstetrics. Her interests are high risk obstetrics, multiple pregnancy and intrapartum care. Elaine is the Lead Clinician for the Rainbow Clinic at Wythenshawe and Chair of the Greater Manchester and Eastern Cheshire Perinatal Loss Special Interest Group. Elaine contributed to the development of the North West Regional Management of Stillbirth Guideline. She is the co-author of the Second Trimester Pregnancy Loss Guideline.



Victoria Holmes, Bereavement Midwifery Matron MFT MCS, embarked upon her training as a Midwife in May 2000 at Salford University. On qualifying, her first job was Salford Royal Maternity Unit (Hope Hospital). Victoria worked at Salford for 13 years in total where she gained vast experience in working in the Antenatal clinic, early pregnancy Unit and Day care Unit. Then, in May 2011, Victoria was

successful in becoming a Band 7 Coordinator for Delivery Unit; this was a very challenging but exciting time in her career. In 2013 the bereavement services at MFT were established along with rainbow clinic and Vicky played an active role in the development of bereavement services and to be able to make a difference to parents who experience the death of their baby it very rewarding. In February 2022 Vicky was successful in being appointed to the role of the Maternity Bereavement Matron for the managed clinical service.



Eileen Stringer is a registered nurse and midwife with 35 years' experience working in the NHS and has held a variety of senior clinical and managerial midwifery roles. Eileen was a consultant midwife at Pennine Acute hospitals Trust, leading on all aspects of public health within the maternity service, until her retirement.

Eileen's work has focused on improving outcomes in many aspects of maternity care for all families, including access to care, antenatal care and screening, perinatal mental health, smoking cessation,

infant feeding, care of younger parents and the implementation of the NHSE Saving Babies' Lives Care Bundle. She is an honorary senior lecturer at the University of Manchester and has published nationally and internationally about the challenges midwives face in improving health and outcomes for vulnerable families.

Dr Gauri Batra, Consultant Paediatric, Placental and Perinatal Histopathologist, Manchester University NHS FT (Royal Manchester Children's)



Suzanne is the Matron for Fetal Surveillance at Manchester Foundation Trust (MFT) with a special interest in Fetal Growth Restriction (FGR). Suzanne is midwifery lead for the Manchester Placenta Clinic and SGA service at MFT.

Suzanne has led on the implementation of the NHS England Saving Babies Lives care bundle at MFT since 2016 and is part of the Greater Manchester and East Cheshire (GMEC) LMNS Saving Babies Lives Team. Suzanne co-chairs the North West FGR Network with Professor Ed Johnstone.

Suzanne is an Honorary Clinical Lecturer at The University of Manchester teaching on both undergraduate and postgraduate programmes. She is a course director for Baby Lifeline and has worked with NICE as a specialist committee member. Suzanne proudly works closely with Tommy's the baby charity and is the midwifery director for the Tommy's Stillbirth Centre. You can follow Suzanne on twitter **@MidwifeThomas**



Dr Kylie Watson holds a clinical academic role as a consultant midwife at Saint Mary's Hospital, Manchester, and honorary lecturer at the University of Manchester. She trained in New Zealand but has spent over 20 years working within many different clinical settings within the UK. Kylie completed a full-time NIHR PhD fellowship in 2019. Her clinical leadership roles are primarily focused

on midwifery-led care and pathways, including an upcoming piloting of a midwifery-led birth after caesarean pathway. Kylie also leads a large birth planning (including supporting women who wish to make a plan out with recommended guidelines) and postnatal listening service. Part of her role is to also support the Public Health Midwifery Matron within Saint Mary's Hospital. Kylie's research interests have focused on intrapartum care, including the use of wireless monitoring during labour. Current research is focused on the maternity experiences of women living in areas of social deprivation and from Black, Asian and minority ethnic backgrounds. You can follow Kylie on twitter **@kykywatson**



Lucy Livesey is a bereaved mother, a Mindfulness Meditation teacher and Mental Health Nurse. Her work within the mindfulness field is becoming widely recognised around the globe and she has been using her own experience of suffering to help others. Lucy teaches from a real place of authenticity, her caring and warm nature is reassuring and she has a natural ability to put people at ease.

She brings to you a wealth of experience and a clear message which is to know that amongst our suffering, there can be joy, even in the most darkest of times.

[The Ellie's Gift Project](#) is a project that was set up to help the baby loss community through the provision of mindfulness and relaxation interventions. They offer free recordings, courses and classes in addition to their free baby loss support app – The Ellie's Gift App. Further details are available via the link above or <https://www.relaxwithlucy.co.uk/elliessgift>. You can follow Lucy and The Ellie's Gift Project on twitter **@relaxwithlucy**



Dr Lydia Bowden, Complex and Palliative Care Lead, Consultant Neonatologist, Medical Examiner, Neonatal Unit, Royal Oldham Hospital, Northern Care Alliance NHS Foundation Trust

Qualified University of Dundee, Scotland 1988. Neonatal consultant for 24 years. Neonatal training in Stoke, Manchester and Liverpool.

Appointed Neonatal Clinical lead 1998, Clinical Director for 5 years at University Hospital South Manchester.

Transferred to NICU Oldham 2013 as part of reorganisation of Neonatal services. Developed Neonatal Bereavement and palliative care lead, Oldham from 2014. Was Greater Manchester Neonatal Network Clinical Governance lead for 8 years developing reporting system for significant events to aid learning.

Founder member, and co-Chair, of the NW Neonatal Palliative care group, provides online resources for Northwest region, including care plans and guidelines for perinatal palliative care. External Assessor for BLISS family centred care charter, and part of the steering group for Neonatal unit accreditation.

Represented British association of Perinatal Medicine on Royal College of Paediatrics and Child Health External Second Opinion guidance for professionals and families. Recently introduced FiCare on the unit at Oldham, we became 1st NICU to attain accreditation in NW. Member Northwest Neonatal Operational delivery Network special interest groups for FiCare, Breast feeding, Retinopathy of prematurity, Palliative care. NICE evidence review panel neonatal representative





**Greater Manchester  
and Eastern Cheshire**  
Strategic Clinical Networks



2013-2017. Neonatal expert reviewer for Each Baby Counts, MBRRACE Neonatal lead Pennine. Reviewer Archives Disease in Childhood and British Medical Journal. President of Northwest perinatal education and research group (PREMNW). Faculty member and co-author NW Difficult Neonatal Airways group and guideline.

Co-Chair Greater Manchester Paediatric palliative care network from 2019. Medical examiner since February 2021 at Oldham.

In her spare time Lydia has a husband, 4 children, a flock of chickens and enjoy walking and learning Spanish!