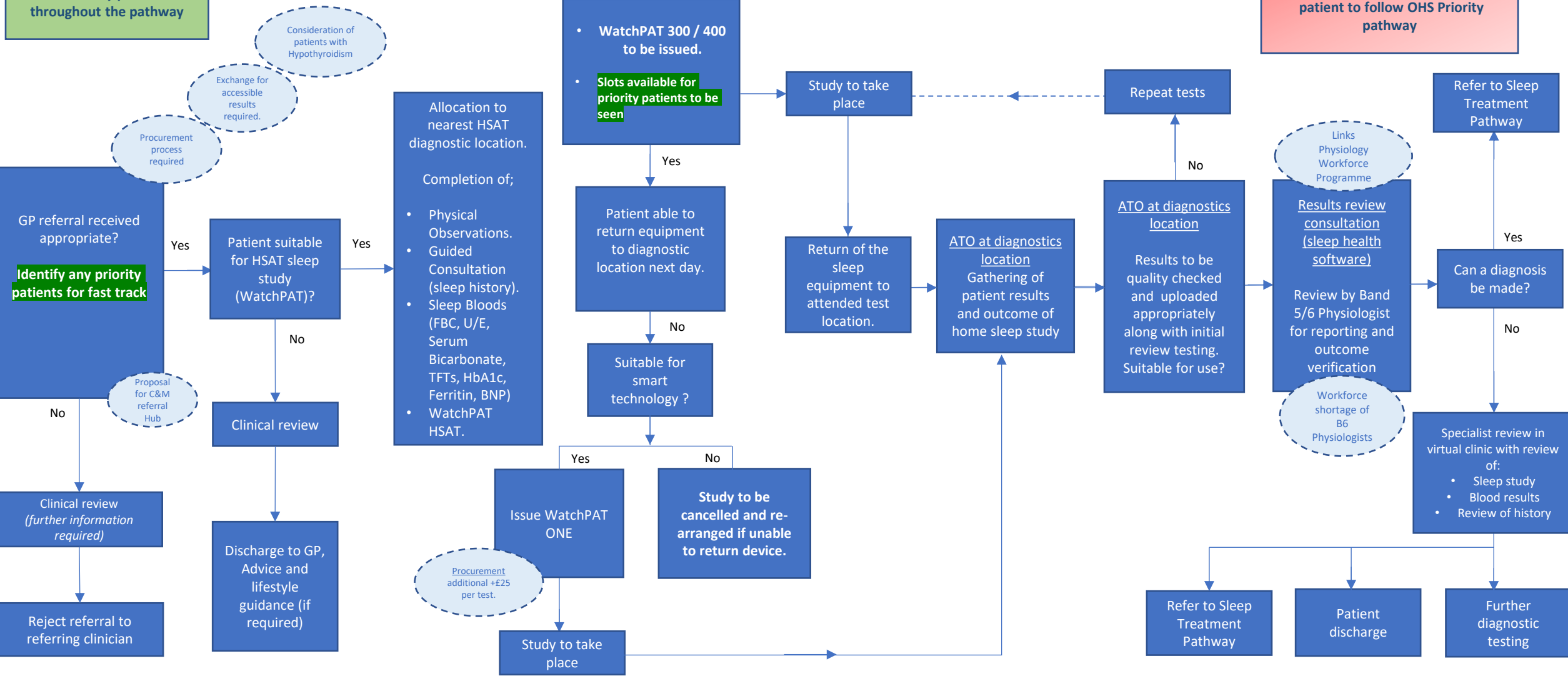


Cheshire and Merseyside Sleep Diagnostics Pathway

Slots to be made available for Priority patients throughout the pathway

If concerns around OHS
 • Bicarbonate ≥ 27
 patient to follow OHS Priority pathway



? Narcolepsy – patients should be directed to Aintree

Priority patients Occupational drivers, Licensable occupations, Pre-OP (see NICE NG202)

Sleep Treatment Pathway

