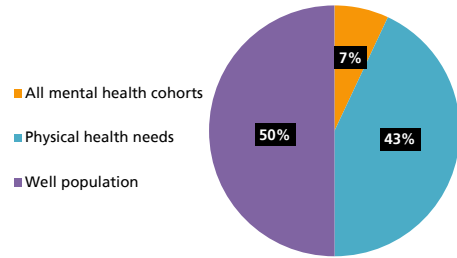


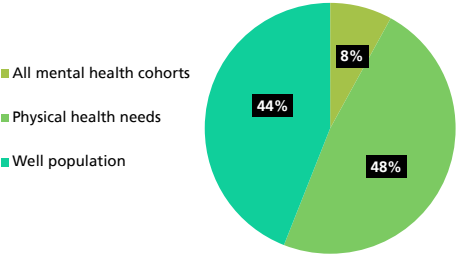
Moving towards a North East and North Cumbria (NENC) Integrated Care System for Mental Health: Why improving the management of long term conditions and medically unexplained symptoms is our priority

West, North and East and Cumbria STP
Population - 279,600



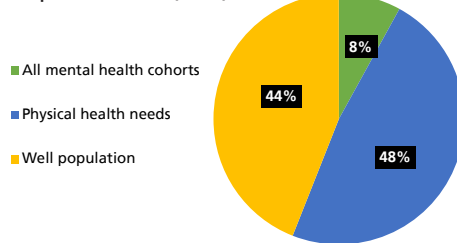
North East and Cumbria STP
24% of mental health patients live in most deprived quintile (non-mental health=15%)

Northumberland, Tyne and Wear and North Durham STP
Population - 1,245,782

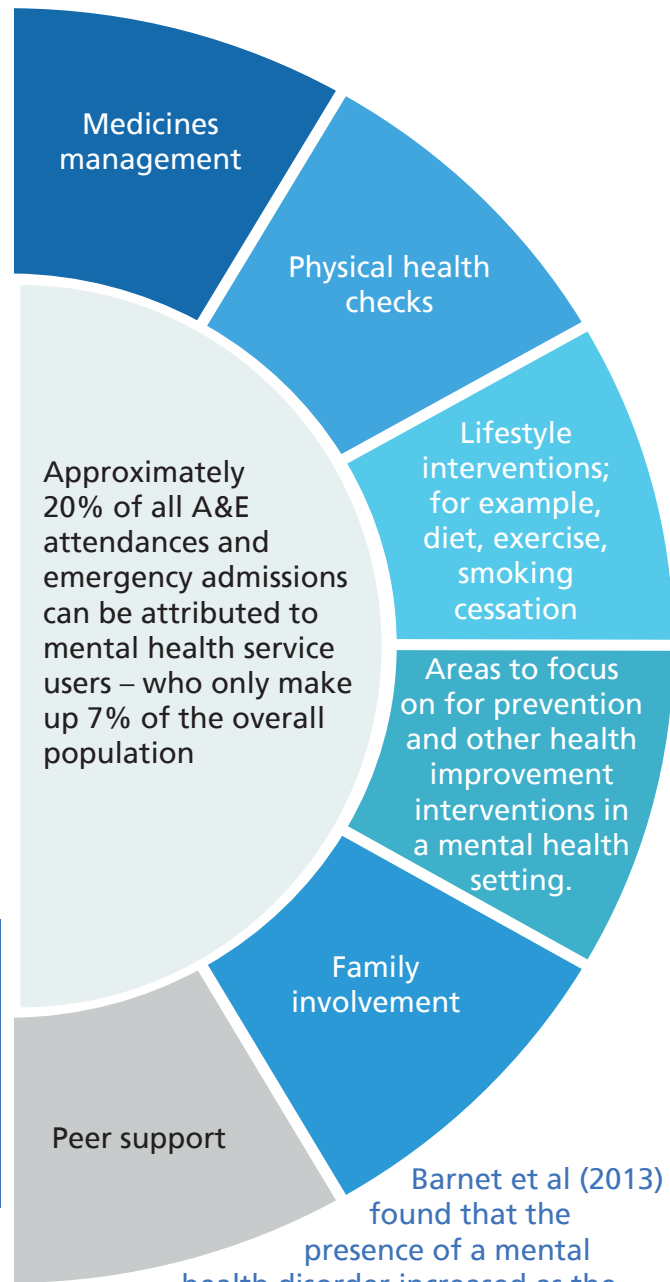


Northumberland, Tyne and Wear and North Durham STP
40% of mental health patients live in most deprived quintile (non-mental health=29%)

Durham, Darlington, Teesside, Hambleton, Richmondshire and Whitby
Population - 1,144,993



Durham, Darlington, Teesside, Hambleton, Richmondshire and Whitby
40% of mental health patients live in most deprived quintile (non-mental health=28%)



Barnet et al (2013) found that the presence of a mental health disorder increased as the number of physical morbidities increased and was much greater in those living in deprived areas.

12-18% of all NHS expenditure could be linked to poor mental health; those with long term conditions are 2-3 times more likely than the general population to experience a mental health condition, especially mood disorders.

