

Cheshire & Merseyside Palliative and End of Life Care Programme Delivery & Oversight Group Terms of Reference

Overview

The Cheshire & Merseyside Palliative and End of Life Care Network (PEOLCN) sits within the North West Coast Strategic Clinical Network (SCN) as part of NHS England, and the Health and Care Partnership for Cheshire & Merseyside. The PEOLCN reports to the National End of Life Care programme Board through the Clinical Lead, and to the C&M Health and Partnership Programme review group through the Senior Responsible Officer (SRO) for End of Life Care.

Purpose of the C&M Health and Partnership Palliative and End of Life Care Programme

The programme aims to support the people of Cheshire & Merseyside, and those who care for them, to live well before dying with peace and dignity supported by care which is personalised, high quality and equally accessible to all.

The PEOLCN is the delivery arm for the C&M Health and Partnership programme.

Purpose of and Terms of Reference for the Palliative and End of Life Care Delivery & Oversight Group

The Delivery & Oversight Group will:

1. Have oversight of the PEOLCN work programme and associated projects ensuring successful delivery, escalating as appropriate issues and risks to delivery to the C&M Health and Partnership P&EOLC Programme Board.
2. Influence and support the commissioning and provision of end of life care across C&M, which delivers against the PEOLCN strategic objectives to:
 - Raise awareness of and enabling conversations around death and dying with the public and professionals both in health and social care.
 - Support the identification of patients who are at end of life and offering care which is coordinated.
 - Enable patients within Cheshire & Merseyside, and those who care for them, to identify their preferences and wishes at end of life and for those wishes to be met regardless of disease condition or place of care.
 - Promote and enable equitable access to care guided by national guidance and best practice.
 - Ensure patients within Cheshire & Merseyside at end of life, and the people who care for them, to be supported by a competent, confident capable workforce.
 - Commission and provide high quality, cost effective integrated pathways for palliative and end of life care across Cheshire & Merseyside.
3. Support active involvement through the locality areas they represent in the delivery of the PEOLCN work programme and associated projects.

Responsibility of the programme group representative

- Attend the delivery and oversight group meeting or nominate a named deputy.
- Steer and influence the development and delivery of the PEOLCN work plan.
- Reflect PEOLCN strategic objectives in local organisational plans.

Attendance and Quorate

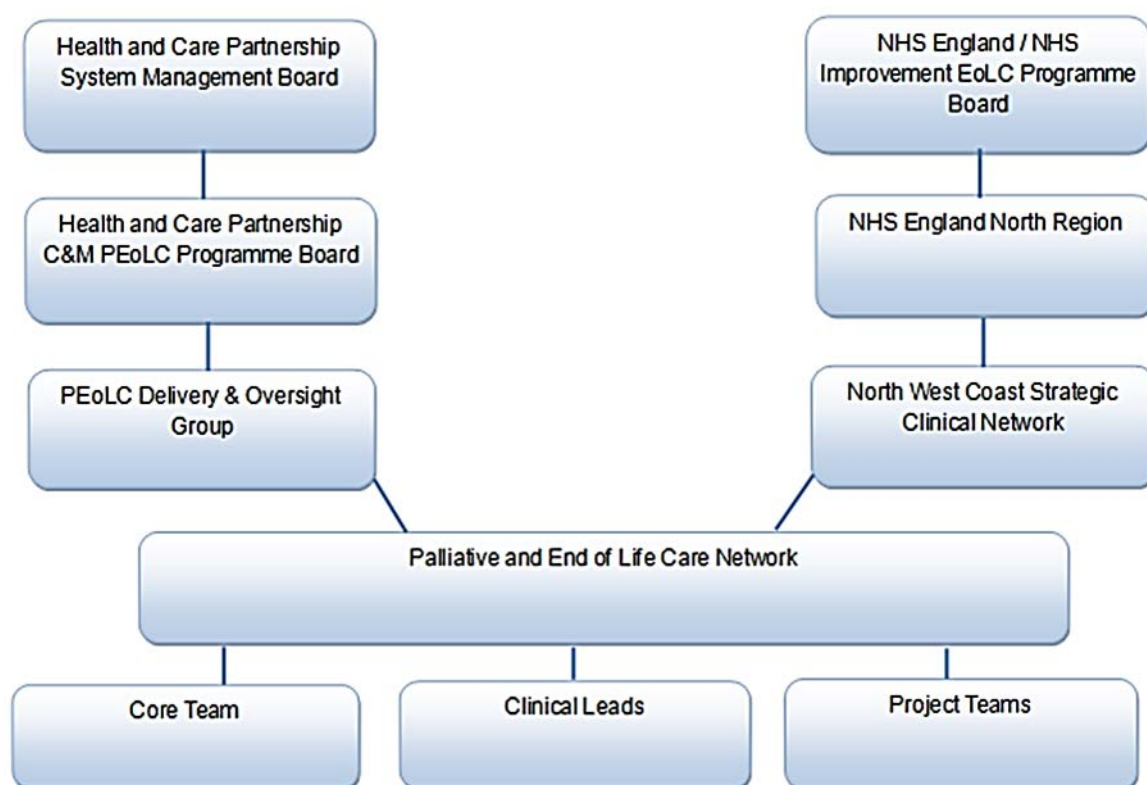
Representatives should attend 75% of meetings (3 out of 4).

The D&O group will be quorate when the chair or nominated deputy is present, 5 of the 9 locality areas are represented with at least 4 additional members.

Meeting frequency

The Delivery and Oversight Group will meet quarterly.

Reporting



Membership

| Representative | Name | Role/Organisation |
|---|------------------------------------|---|
| Clinical Lead (Chair) | Dr Paula Powell | SCN |
| GP lead | Dr Debbie Harvey | SCN |
| Network support team | Kathy Collins | SCN Senior Network Manager |
| Network support team | Kath Davies | Quality Improvement Project Manager SCN |
| Aintree Locality | | |
| Hospital SPC Advisory team Hospice CEO Community team | Dr Julie Raj Rose Milnes tbc | SPC Consultant UHA Woodlands Hospice |

| | | |
|---|--|--|
| GP EoLC lead CCG EoL Commissioning lead | Dr Debbie Harvey Moira Harrison | Sefton CCG Sefton CCG |
| Liverpool Locality | | |
| Hospital SPC Advisory team Hospice CEO Community team GP EoLC lead CCG EoL Commissioning lead | Prof John Ellershaw Diane Barker Angela Parle Sandra Howarth Cathy Hubbert Jill Kirkham Sam Clements | SPC Consultant RLBUHT Liverpool Marie Curie Merseycare Merseycare Liverpool CCG Liverpool CCG Liverpool CCG Liverpool CCG |
| West Lancashire Southport & Formby Locality | | |
| Hospital SPC Advisory team Hospice CEO Community team GP EoLC lead CCG EoL Commissioning lead CCG EoL Commissioning Lead | Dr Karen Groves Debra Lawson Helen Birch Ged Corcoran Moira Harrison Vacant | SPC Consultant S&O Clinical Services Manager Southport & Formby CCG Southport & Formby CCG West Lancs CCG |
| St Helens & Knowsley Locality | | |
| Hospital SPC Advisory team Hospice CEO Community team GP EoLC lead Knowsley CCG EoL Commissioning lead Knowsley GP EoLC lead St Helens CCG EoL Commissioning lead St Helens | Dr Anthony Thompson Neil Wright Dr Seamus Coyle Dr Paul Barry Jane Uglow Dr Paul Rose Helen Williams | St Helens & Knowsley Hospital Willowbrook Hospice Willowbrook Hospice Knowsley CCG Knowsley CCG St Helens CCG St Helens CCG |
| Halton Locality | | |
| Hospital SPC Advisory team Hospice CEO Community team GP EoLC lead CCG EoL Commissioning lead | Gwen Waller Viv Culleton Berni Hardman Not represented David Marteau | WHHFT Halton Haven Hospice Bridgewater Halton CCG |
| Warrington Locality | | |
| Hospital SPC Advisory team Hospice CEO Community team GP EoLC lead CCG EoL Commissioning lead | Gwen Waller Pam Massey Berni Hardman Dr Sue Burke Kerry Gerrard | WHHFT St Rocco's Bridgewater Warrington CCG Warrington CCG |
| Wirral Locality | | |
| Hospital SPC Advisory team Hospice CEO Community team GP EoLC lead CCG EoL Commissioning lead | Dr Catherine Hayle Helen Knight Not represented Maria Jones Claire Huntley | WUTH Wirral St Johns Wirral CCG Wirral CCG |
| West Cheshire Locality | | |

| | | |
|---|--|--|
| Hospital SPC Advisory team Hospice CEO Community team GP EoLC lead CCG EoL Commissioning lead | Jenny Smith Margaret Wright TBC Katherine Butler Lesley Hilton | COCH Hospice of the Good Shepherd West Cheshire CCG West Cheshire CCG |
| Strategic Partnership Cheshire | | |
| CEO CCG Commissioning Lead | Salli Jeynes Tracy Wright | End of Life Partnership Vale Royal/ Eastern Cheshire CCG South Cheshire CCG |
| CCG GP Lead | Sinead Clarke | South Cheshire CCG |
| Peoples Voice Group Chair | Sharon Bird Allan Grogan (Deputy) | SCN |
| Education Strategy Group Chair | Salli Jeynes | SCN |
| Charitable sector | | |
| Macmillan [Strategic Partnership Manager North-West] | Nancy Whittaker | Macmillan |
| Marie Curie [Divisional Manager North] | Karen Tourley | Marie Curie |
| Acute Hospital NED | Julie Gorry | S&O hospital |
| EoLC Facilitators Representative | Jeanette Renshaw | LHCH |