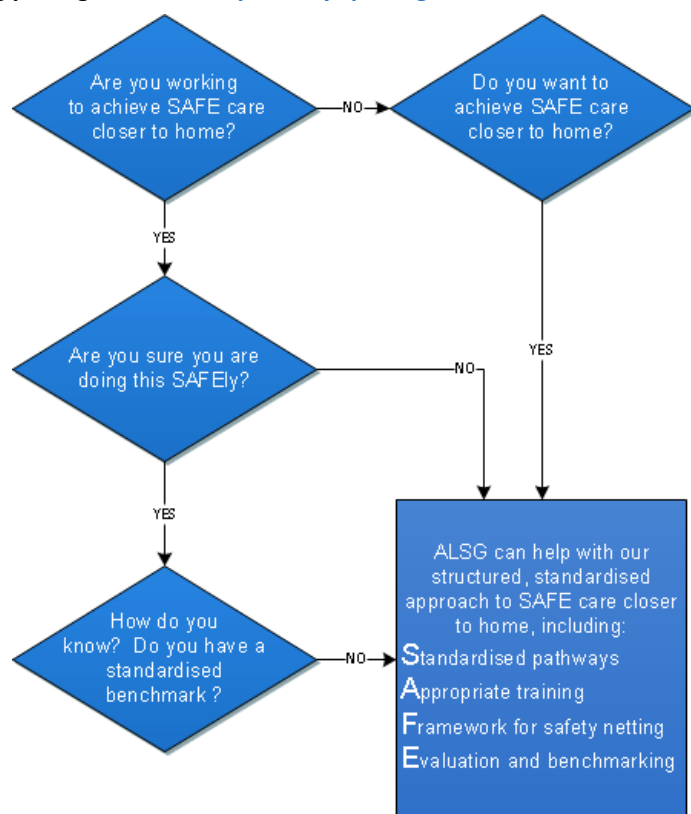


ALSG’s medical education & training programmes improve outcomes for people in life-threatening situations, anywhere along the health care pathway, anywhere in the world.

SAFE care closer to home: The ALSG SAFE programme

A practical approach to achieving integration using SAFE clinical standards and shared systems in patient assessment and handover.

The provision of safe care, closer to home requires all of the healthcare professionals working in increasingly complex health and social care systems to have **adequate knowledge, skills, competencies and equipment**. In addition, all **parents and carers** will require the **knowledge and skills** to carry out directions given by healthcare professionals and to **recognise deterioration** requiring urgent intervention. This is acknowledged by including **communication and handover, skills teaching, communication with carers** and using **the training carers teaching package** in the **SAFE pathways package**



“All those working with patients [sic] should have the right knowledge and skills to meet their specific needs—wherever they are in the health system”¹

Information for candidates

This programme provides a standardised, structured approach to ensure that you have adequate knowledge and skills to provide safe care closer to home.

Information for educators, managers and commissioners

As a charity, ALSG invests all profits in educational resources and partners with the most effective and respected organisations worldwide to develop exceptionally high quality programmes. ALSG education quality is verified, accredited and recognised internationally as ‘best in class’, contributing to better outcomes for patients in life-threatening situations.

The SAFE programme provides not only the **educational** components but also focuses on the essential areas of safe, standardised **pathways, safety netting** and **benchmarking** and recognises and emphasises the importance of a **structured handover** to patients, parents, carers and clinicians.

“What we want to see is increased consistency and quality in education and training and consequently in people’s outcomes and experiences...Service delivery and education and training are fundamentally interlinked.”²

SAFE curriculum and key information

Overview

For children and young people, adults of all ages, pregnant women, those with mental health issues and specifically patients with a tracheostomy:

- Standardised pathways
- Appropriate training
- Framework for safety netting
- Evaluation and benchmarking

Standardised pathways

Based on a tried, tested and evidence-based methodology “Manchester Triage System” and adapted for primary care and the community setting by an expert working group.

Locally applicable using the “Presentation Priority Matrix” methodology and an e-DELPHI engine also testing the validity of your urgent care process.

Appropriate training

- Community courses: public
- Training carers teaching package as part of SAFE pathways and acute courses
- SAFE pathways courses for community clinicians
- Emergencies courses for acute and secondary care

Framework for safety netting

With collaborative partners:

- Training packages for patients, parents and carers
- Advice assets
- Framework for communication ‘handover’ with patient, parents and carers

All elements to be embedded and linked to courses for healthcare workers in acute, secondary, primary and community care

Evaluation and benchmarking

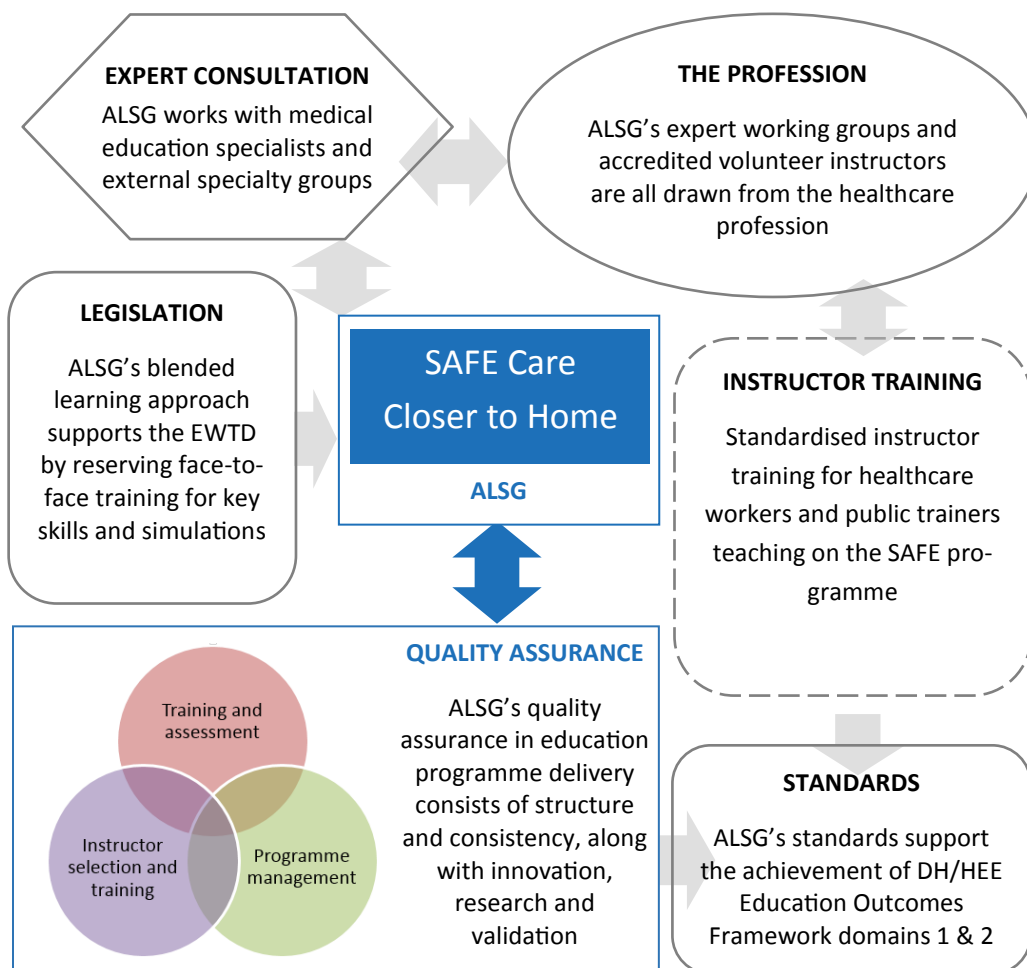
SAFE will provide:

- A recognised standard and quality assured structure with on-going evaluation and review included at all stages ...
- ... supporting benchmarking at all levels

ALSG's medical education & training programmes improve outcomes for people in life-threatening situations, anywhere along the health care pathway, anywhere in the world.

ALSG

Education programmes created and maintained to the highest quality, through wide and deep professional input and validation



The quality case for ALSG education programmes

This education programme operates in a profession where quality is a key metric in improving patient care.

As the NHS changes and performance measures are applied, at ALSG we compare our programme content and quality to the standards and map the result. For the most up-to-date information on standards mapping of any ALSG education programme, email qualitymap@alsg.org.

*"Excellent Education: education and training is commissioned and provided to the highest standards, ensuring learners have an excellent experience..."*³ - ALSG's quality standards guarantee this and support you in achieving the EOF quality standards.



Further information

For further information on introducing the SAFE programme, scan the QR code to visit the dedicated webpage www.alsg.org/uk/safe or email safe@alsg.org.



Worldwide headquarters:

ALSG Centre for Training and Development, Ellesmere St, Swinton, Manchester, M27 0LA, UK
Tel +44 161 794 1999 www.alsg.org
Charity no. 1095478 Company no. 4580873

The patient outcome case for ALSG education programmes

Our education programmes are designed to save lives. That is why ALSG was set up in 1990 and it drives everything that we do.

Where we have been able to measure outcomes, we have found that **lives have been saved**.

Following our education programme in Gambia there was a **50% reduction in maternal mortality**, a **32% reduction in infant mortality** and a **94% survival rate** in resuscitation.

Anecdotal evidence from candidates who pass our education programmes suggests that confidence increases in individuals and their teams, and that skills are practised **immediately** with **improved patient care** and survival rates.

The economic case for ALSG education programmes

We commissioned The University of Liverpool's Health Economics group to independently verify our belief that appropriate education programmes save money as well as lives.

Results indicate that even small improvements to outcomes result in considerable direct cost savings *"..primary prevention by means of .. training may lead to significant improvements in health.."* and *"..may help to minimise the considerable QALY losses.."*⁴

If you are considering developing your own training locally, please read our paper considering the pros and cons ['What do ALSG courses offer compared to locally developed training'](#) in which we consider duplication of spending and training, variation of standards, appeals, teaching quality, multi-disciplinary oversight, blended learning and international standards.

Issue 2 - September 2014

¹ Children and Young People's Health Outcomes Strategy 2012, Forum Co-Chairs: Professor Ian Lewis, Christine Lenehan *Report of the Children and Young People's Health Outcomes Forum*

² Moore et al, 2013, NHS Future Forum *Education and Training- next stage*, London.

³ Department of Health, 2013, *Education Outcomes Framework, Domain 1*

⁴ Leigh, Granby, Turner, Wieteska, Haycox & Collins, June 2014 *The incidence and implications of cerebral palsy following potentially avoidable obstetric complications: a preliminary burden of disease study*