

Transforming Community Care

Jane McVea

Senior Strategic Account Manager (London and South)
New Care Models Programme

16 Sep 2016

We are realising the NHS Five Year Forward View

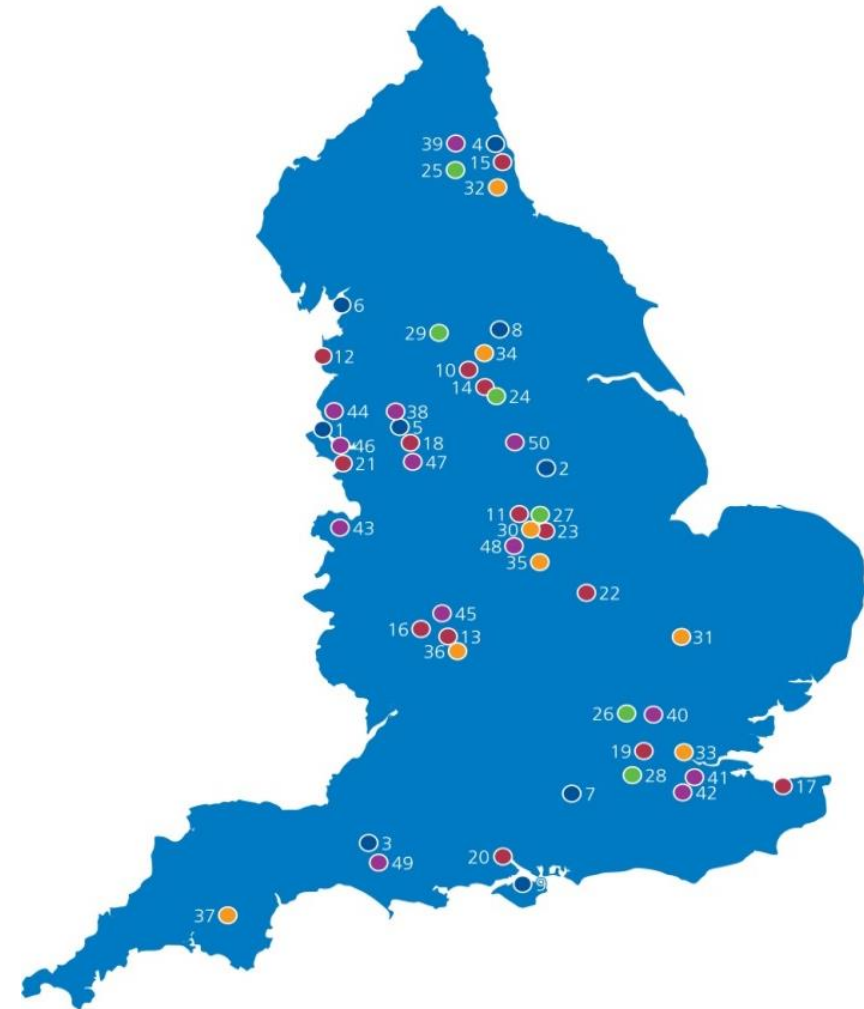
through the new care models programme

- 1** **Health and wellbeing gap** **Radical upgrade in prevention**
- 2** **Care and quality gap** **New care models**
- 3** **Funding gap** **Efficiency and investment**



Our values: clinical engagement, patient involvement, local ownership, national support

50 vanguards are developing new care models, and acting as blueprints and inspiration for the rest of the health and care system.

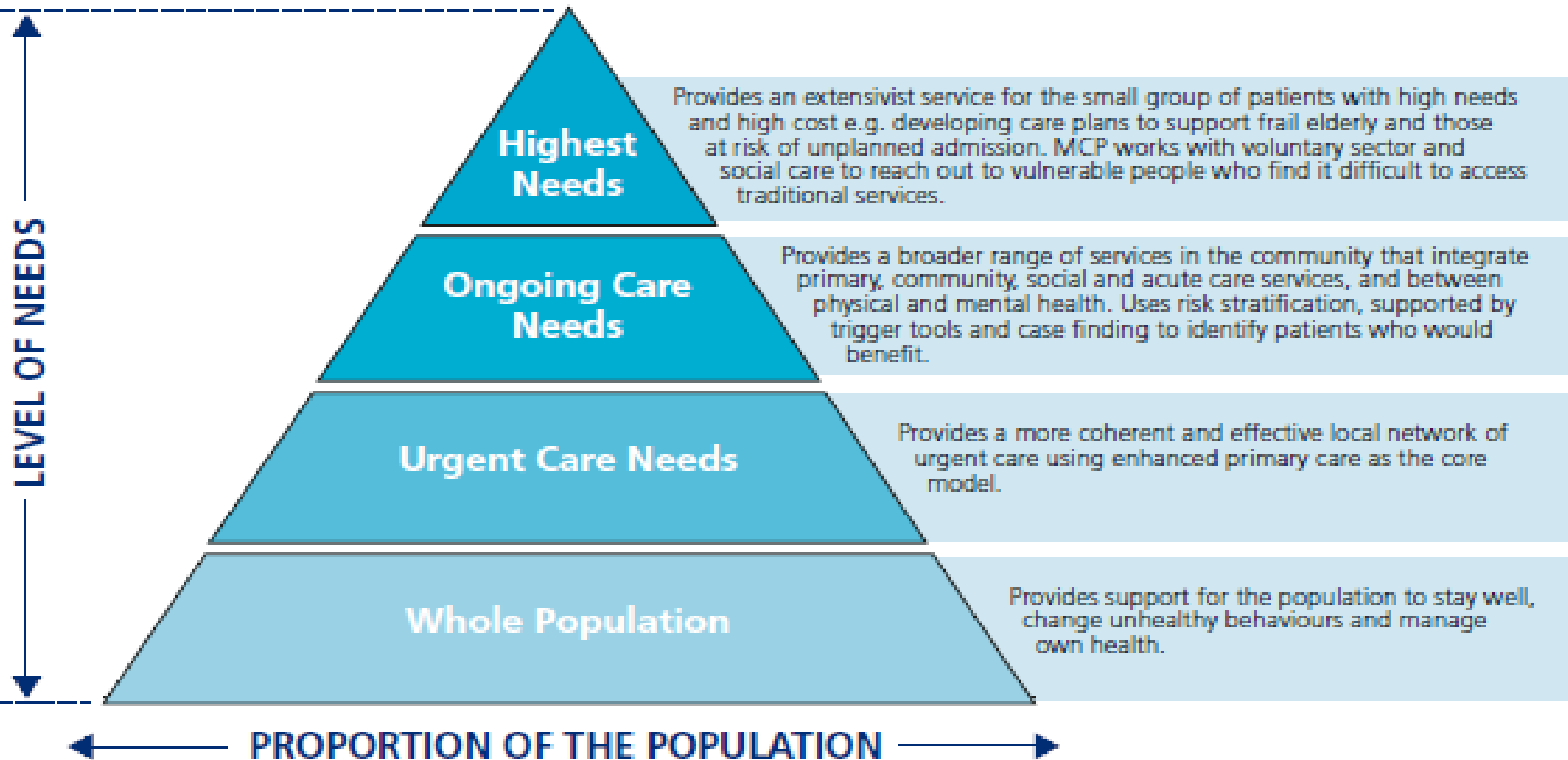


- 9 Integrated primary and acute care systems
- 14 Multispecialty community providers
- 6 Enhanced health in care homes
- 8 Urgent and emergency care
- 13 Acute care collaboration

Our values: clinical engagement, patient involvement, local ownership, national support

What are the barriers you are facing to maximising delivery of care in the community?

The four levels of the whole population care model



Our values: clinical engagement, patient involvement, local ownership, national support

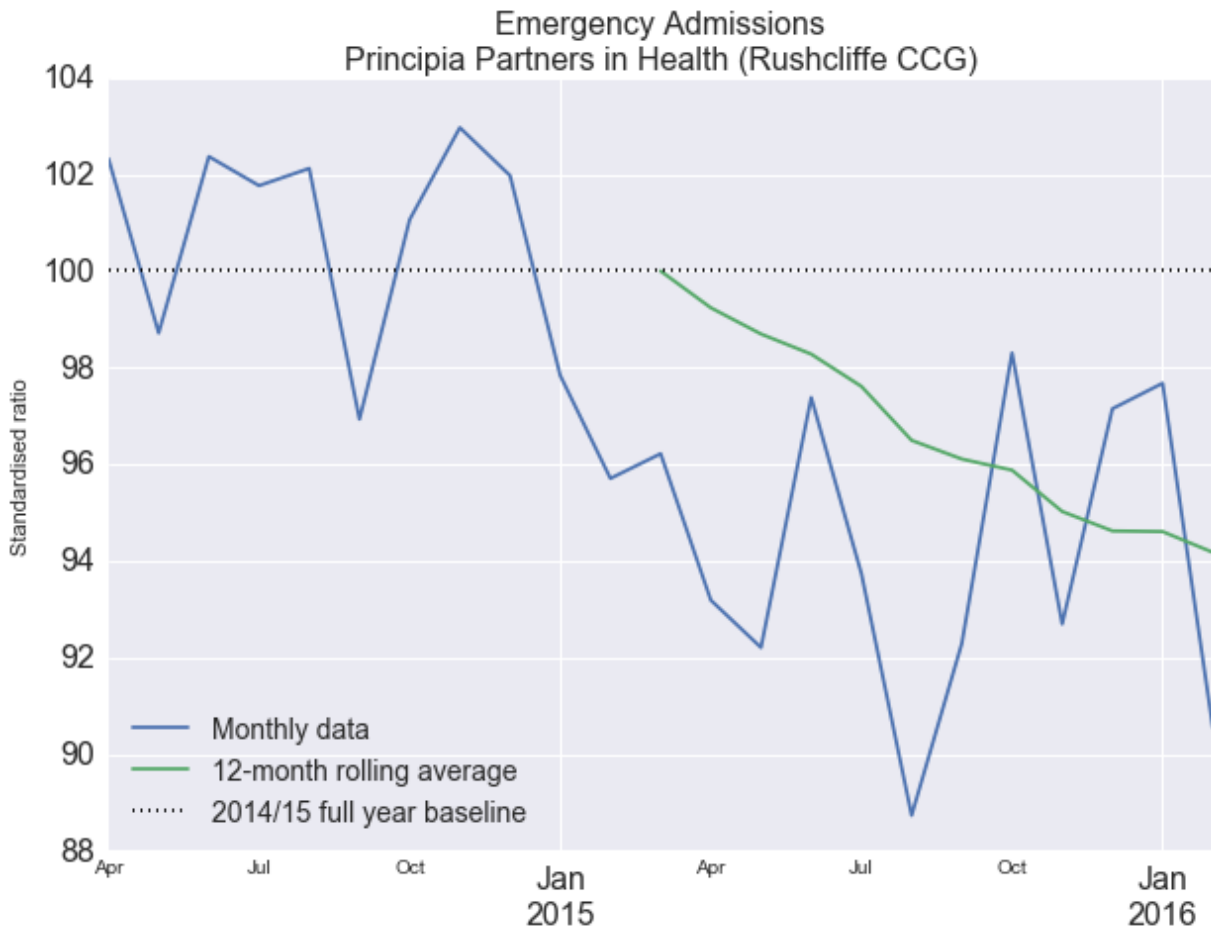
Core elements

- 1) Understanding population and patient needs
- 2) Catalysing patient and community engagement
- 3) Delivering enhanced primary and community-based care
- 4) Ensuring accessible and responsive urgent care
- 5) Implementing the 'extensivist' model

None of the individual elements of the care models are novel: they are happening in many places across the NHS. The **radical feature is to implement them in a coordinated way, at scale, and for the long term.**

Our values: clinical engagement, patient involvement, local ownership, national support

Early results show the vanguards are helping reduce admissions...

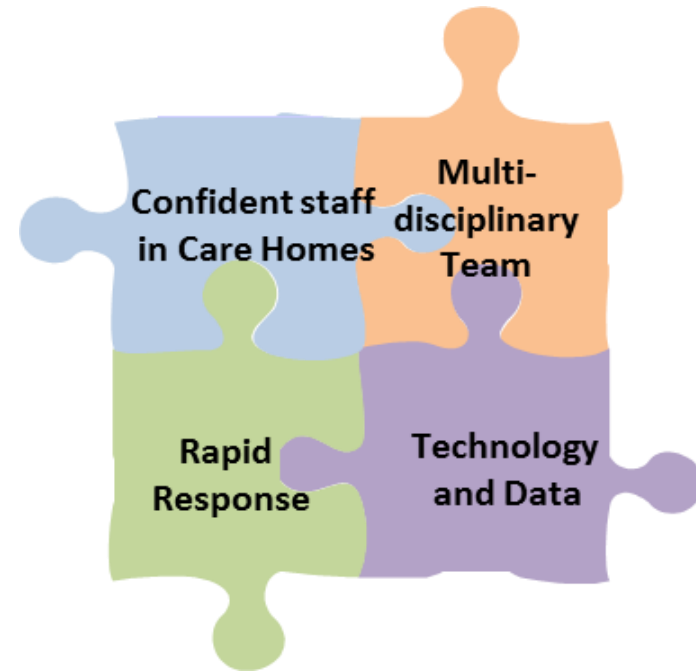


Our values: clinical engagement, patient involvement, local ownership, national support

... are keeping people well, in their place of choice...

North & East Herts CCG Care Home's
HomeFirst rapid response service has:

- **reduced hospital admissions by 7.2%** in Lower Lea Valley.
- **reduced A&E attendance** in North Hertfordshire **by 14%**.



Our values: clinical engagement, patient involvement, local ownership, national support

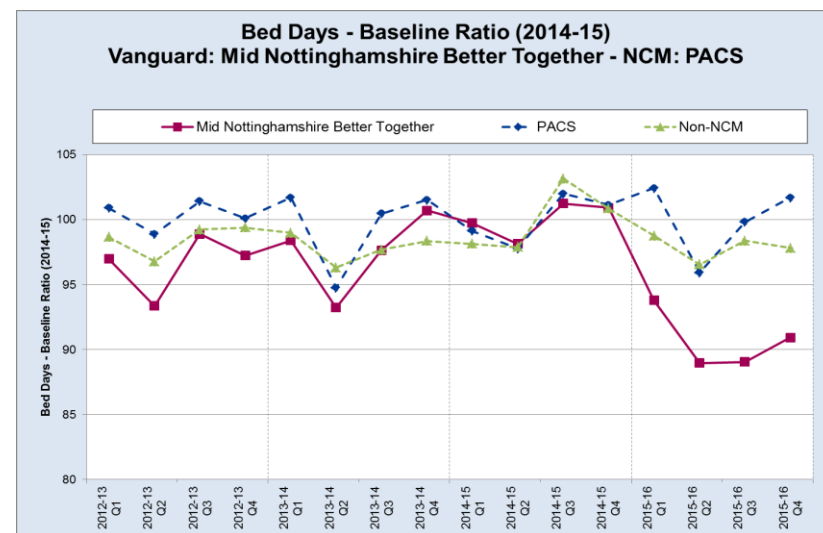
... and are reshaping roles so that they are more rewarding, sustainable and efficient

Mid Nottinghamshire Better Together PACS – Local Integrated Care Teams

Eight care teams provide proactive and co-ordinated treatment to high-risk patients, and are reducing pressure on local hospitals

Teams typically include:

- two community matrons;
- a district nurse;
- occupational therapist;
- physiotherapist;
- mental health worker;
- social worker;
- healthcare assistants;
- voluntary/third sector workers;
- a ward coordinator/Manager.



“Integration is about working together to achieve better outcomes for our patients. As a team, we are committed to delivering quality care around the needs of the patient.”

Our values: clinical engagement, patient involvement, local ownership, national support

The national programme is supporting the vanguards through the key enablers of their new care models



Our values: clinical engagement, patient involvement, local ownership, national support

We are learning about the key requirements for developing, delivering, and spreading new care models

- Build collaborative system **leadership** and relationships around a shared **vision** for the population.
- Develop a system-wide **governance** and programme structure to drive the change.
- Undertake the detailed work to design the **care model**, **the financial model and the business model**.
- Develop and implement the care model in a way that allows it to **adapt and scale**.
- Implement the appropriate **commissioning and contracting** changes that will support the delivery of the new care model.

Our values: clinical engagement, patient involvement, local ownership, national support

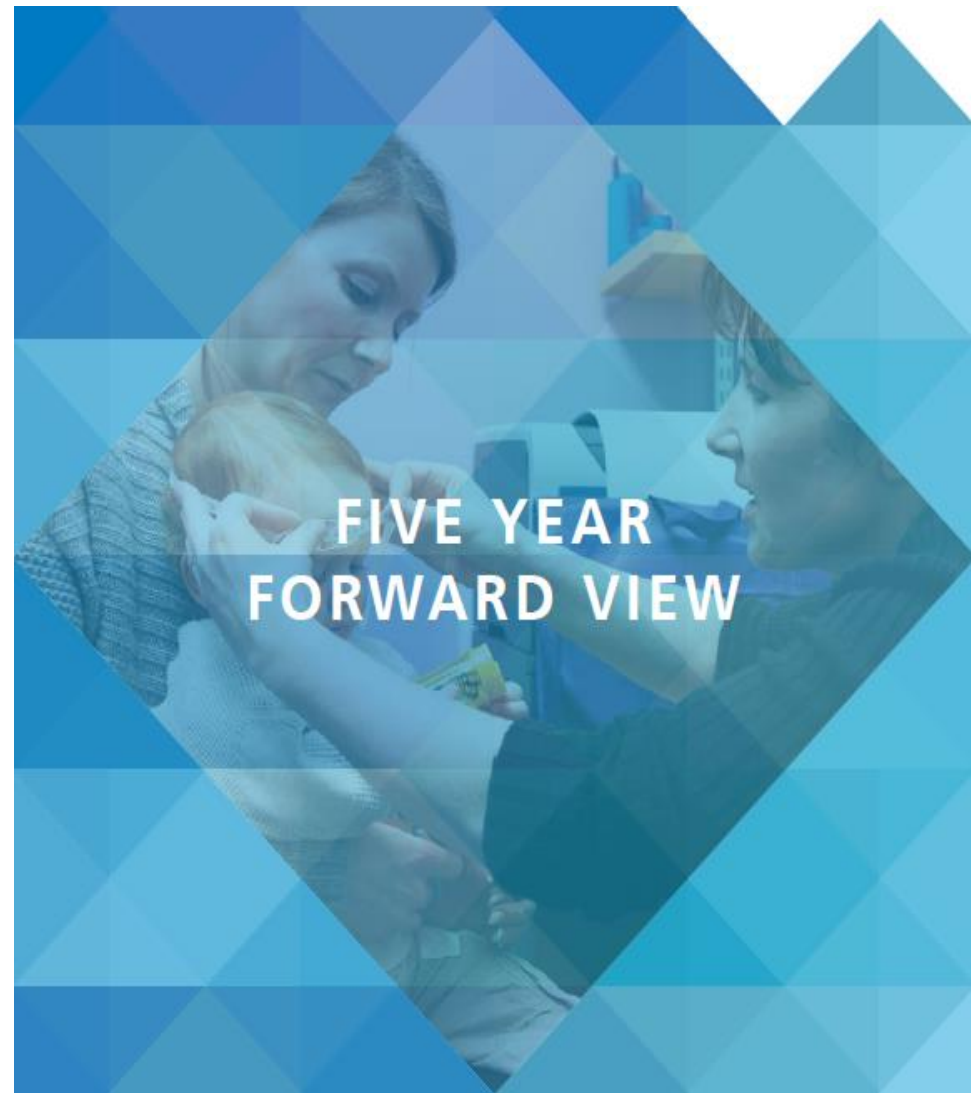
For further information...

More details can be found on the NHS England website:

www.england.nhs.uk/vanguards

Or join the conversation on Twitter using the hashtag:

#futureNHS



Our values: clinical engagement, patient involvement, local ownership, national support

www.england.nhs.uk/vanguards

#futureNHS