

Venous Thromboembolism (VTE) Risk Assessment data collection Quarter 3 2013/14 (October to December 2013)

1. Background

The VTE risk assessment data collection was first made mandatory from June 2010, and this publication refers to data for October to December 2013.

VTE is a significant international patient safety issue. The first step in preventing death and disability from VTE is to identify those at risk so that preventative treatments can be used. The purpose of this data collection is to quantify the numbers of adult hospital admissions who are being risk assessed for VTE to allow appropriate prophylaxis based on national guidance from NICE¹. Such measures have the potential to save many lives each year.

All providers of NHS funded acute care (including foundation trusts and independent sector providers of acute NHS services) must complete this data collection. Providers of non-acute health services are not asked to complete this data collection, although they should be aware that all patients should be protected from unnecessary risk of VTE.

This data collection is a census of all patients – it is not appropriate to use sampling methodologies to produce estimates. This data collection also serves as the mechanism to enable providers to demonstrate to their commissioners that they have achieved the national CQUIN goal on VTE in 2013/14².

This data collection on VTE risk assessment is intended to embed VTE risk assessment across the NHS and will be critical in evaluating the impact of the National VTE Prevention Programme on improving health outcomes for patients.

2. How the statistics are produced

The data collection asks for three items of information:

1. Number of adults admitted as inpatients in the month who have been risk assessed for VTE on admission to hospital using the criteria in the National VTE Risk Assessment Tool
2. Total number of adult inpatients admitted in the month
3. Calculated from (1) and (2), the percentage of adult inpatients, admitted within the month assessed for risk of VTE on admission

Nil returns

- Providers are required to provide information based on a census of patients. Providers who submit data based on a sample or audit of patients are not included in the figures below, and are classed as a “nil return”. Providers who did not have any

¹ The NICE guidance can be found at the following link: <http://guidance.nice.org.uk/CG92>

² Further information about the CQUIN framework is available at: <http://www.england.nhs.uk/wp-content/uploads/2013/02/cquin-guidance.pdf>

admissions in a particular month in the quarter are also classed as a 'nil return' in that month.

Data are submitted and published according to the timings below:

| Timing | Process |
|--|---|
| Month A (e.g. April) | Data are collected from patients in each trust for that month. |
| Month B (e.g. May) | Trusts submit their data monthly for the previous month (e.g. April data are submitted towards the end of May). |
| Month C (e.g. June) | Data for month A (April) are quality assured. |
| Month D (e.g. July) | Data for month A (April) are published in the NHS England website and in UNIFY 2.0 in the beginning of the month (e.g. April data are published in early July). |
| Early every September, December, March, June | Publication of reports for Quarters 1, 2, 3 and 4 respectively, on the NHS England website. |

Providers must collect and submit data onto UNIFY 2 by 20 working days after the month end. The full data tables can be found: <http://www.england.nhs.uk/statistics/vte/>

Guidance on the data collection is included in the 2013/14 CQUIN guidance and can be found at: <http://www.england.nhs.uk/wpcontent/uploads/2013/02/cquin-guidance.pdf>

Findings

Number of data returns

- The number of data returns submitted by providers of NHS funded acute care over Quarter 3 2013/14 was 317, 316 and 317 in October, November and December respectively.
- The number of NHS acute care providers submitting a data return in Quarter 3 2013/14 was 161, 162 and 161 in October, November and December, respectively. For Independent Sector (IS) providers, it was 156, 154, 156 in October, November and December respectively.

Proportion of total admissions getting a risk assessment

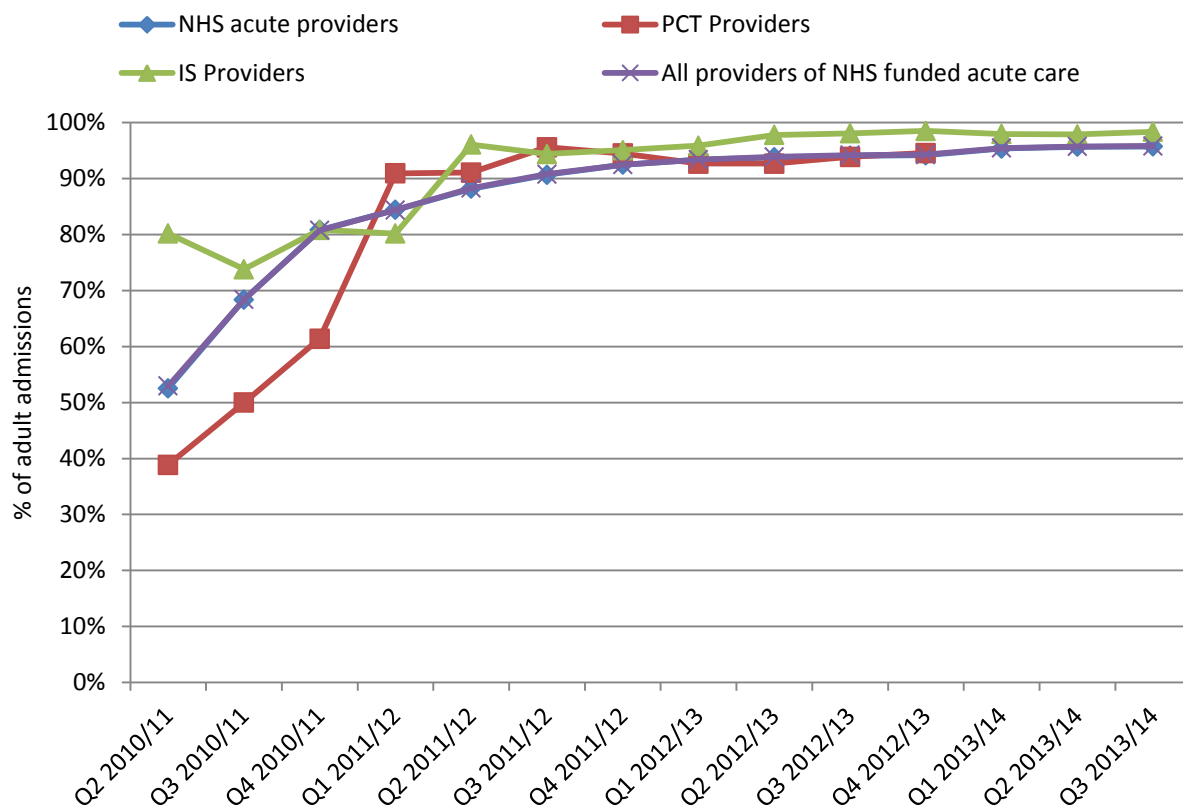
- Over Quarter 3 2013/14 providers reported around 3.5 million admissions to NHS funded acute care. Of these, 3.3 million (96%) received a VTE risk assessment on admission, the same percentage as in Quarter 2 2013/14— see Table 1.
- In Quarter 3 2013/14, the proportion of admissions receiving a VTE risk assessment was slightly lower for NHS acute care providers (96%) than IS providers (98%), with NHS acute care providers carrying out around 97% of all VTE risk assessments.

Table 1. Proportion of adult hospital admissions risk assessed for VTE (Quarter 3 2013/14, England)

| | October 2013 | November 2013 | December 2013 | Q3 2013/14 |
|---|---------------------|----------------------|----------------------|-------------------|
| NHS acute care providers | 95.9% | 95.9% | 95.5% | 95.8% |
| IS Providers | 98.0% | 98.9% | 98.3% | 98.4% |
| All providers of NHS funded acute care | 95.9% | 96.0% | 95.6% | 95.8% |

- A chart showing the proportion of adult admissions risk assessed for VTE since Quarter 2 2010/11 (July to September 2010) is shown below (see Figure 1). There has been a steady increase in the proportion in all providers of NHS funded acute care, from 53% in Quarter 2 2010/11 to 96% in Quarter 3 2013/14

Figure 1. Proportion of adult hospital admissions risk assessed for VTE (Quarter 2 2010/11 to Quarter 3 2013/14, England)



- Overall, all the NHS regions achieved the 95% goal in this quarter – see table 2.

Table 2. Proportion of adult hospital admissions risk assessed for VTE by NHS Region (Quarter 3 2013/14, England)

| NHS Region | All providers | NHS acute care providers | IS providers |
|------------------------------|----------------------|---------------------------------|---------------------|
| North of England | 96.9% | 95.2% | 98.3% |
| Midlands and East of England | 97.6% | 96.0% | 98.8% |
| London | 96.2% | 94.9% | 98.6% |
| South of England | 96.9% | 96.0% | 97.8% |

Proportion of providers above and below 95% of admissions receiving a VTE risk assessment

- In Quarter 3 2013/14, 87% (277 trusts) of the providers carried out a VTE risk assessment for 95% or more of their admissions (the CQUIN goal), an increase of 4 percentage points from the 83% (267) in Quarter 2 2013/14 – see table 3. These proportions are lower for NHS acute care providers than for Independent Sector providers, but NHS acute care providers are responsible for 97% of the admissions. The percentage of trusts carrying out a VTE risk assessment for 90% to below 95% of their admissions, and therefore nearing the CQUIN goal, is 10% (33 trusts).

Table 3. Providers reporting above and below 95% of admissions receiving a VTE risk assessment (Quarter 3 2013/14, England)

| | All providers | | NHS acute care providers | | IS providers | |
|---------------|----------------------|-----|---------------------------------|-----|---------------------|-----|
| | Number | % | Number | % | Number | % |
| 90%-95% | 33 | 10% | 24 | 15% | 9 | 6% |
| Below 95% | 42 | 13% | 28 | 17% | 14 | 9% |
| 95% and above | 277 | 87% | 134 | 83% | 143 | 91% |

4. Additional Information

Data for individual organisations are available at: <http://www.england.nhs.uk/statistics/vte/>

For press enquiries please e-mail the NHS England media team at nhs.cb.media@nhs.net or call **0113 825 0958 / 0113 825 0959**

The Government Statistical Service (GSS) statistician with overall responsibility for this report is:

Alexandra Lazaro
 Outcomes Analysis Team, NHS England
 6A Skipton House, 80 London Road, London, SE1 6LH
Email: england.vte@nhs.net