



Thursday 9 January 2020

**Statistical Press Notice**  
**NHS referral to treatment (RTT) waiting times data**  
**November 2019**

NHS England and NHS Improvement released statistics today on referral to treatment (RTT) waiting times for consultant-led elective care. The statistics include patients waiting to start treatment at the end of November 2019 and patients who were treated during November 2019.

**Main findings**

- At the end of November 2019, 84.4% of patients waiting to start treatment (incomplete pathways) were waiting up to 18 weeks, thus not meeting the 92% standard.
- The number of RTT patients waiting to start treatment at the end of November 2019 was 4.4 million patients. Of those, 1,398 patients were waiting more than 52 weeks.
- For patients waiting to start treatment at the end of November 2019, the median waiting time was 7.7 weeks. The 92<sup>nd</sup> percentile waiting time was 23.9 weeks.
- During November 2019, 303,193 RTT patients started admitted treatment and 1,125,754 started non-admitted treatment (completed pathways).

**Missing data for November 2019**

The following trusts did not submit any RTT pathway data:

- Kent Community Health NHS Foundation Trust (RYY)
- Mid Essex Hospital Services NHS Trust (RQ8)
- North West Anglia NHS Foundation Trust (RGN)
- Royal Free London NHS Foundation Trust (RAL)

Bradford Teaching Hospitals NHS Foundation Trust (RAE) did not submit completed admitted or non-admitted pathways data. Calderdale and Huddersfield NHS Foundation Trust (RWY) did not submit completed non-admitted pathways data.

Factoring in estimates based on the latest data submitted for each missing trust suggests the total number of RTT patients waiting to start treatment at the end of November 2019 may have been 4.6 million patients. See section 5 of 'Notes to editors' for details of the latest data submitted by missing trusts.

## Other data issues

St George's has informed us that the return to reporting since the January 2019 reporting period only applies to the St George's Hospital site, with a separate project underway to roll-out a new electronic patient administration system on the Queen Mary's Hospital (QMH) site. RTT pathways at the QMH site were not included in RJ7's monthly RTT data returns prior to the period of non-reporting as the existing Patient Administration System (PAS) at the QMH site is unable to provide robust measurement of RTT pathways. The trust has informed us that incomplete pathways that start and stop at the QMH site will be missing from the RJ7 return (currently estimated at around 6,000 incomplete pathways). Pathways that are completed at the QMH site will also be missing. A plan has been approved by the Trust Board for the roll-out of a fully RTT compliant PAS at the QMH site and the migration of data. It is estimated that this process will be complete, and pathways from the QMH site will be included in the RJ7 return, within the 2019/20 financial year.

## Revisions

We are also publishing revisions for April to August 2019 today. The revisions are due to corrections received from 11 providers to their information for various months in the period April to September 2019. No revisions were received for September 2019.

There are no changes to the non-reporting trusts for any of the months affected by revisions.

The revisions have not had a significant impact on performance at a national level.

The full set of revised data can be found here: <http://www.england.nhs.uk/statistics/rtt-waiting-times/>. The table below indicates which parts of the RTT publication are affected by revisions:

	Completed admitted pathways	Completed non-admitted pathways	Incomplete pathways	New RTT periods
April 2019	x	x	x	x
May 2019	x	x	x	x
June 2019	x	x	x	x
July 2019	x	x	x	x
August 2019			x	
September 2019				

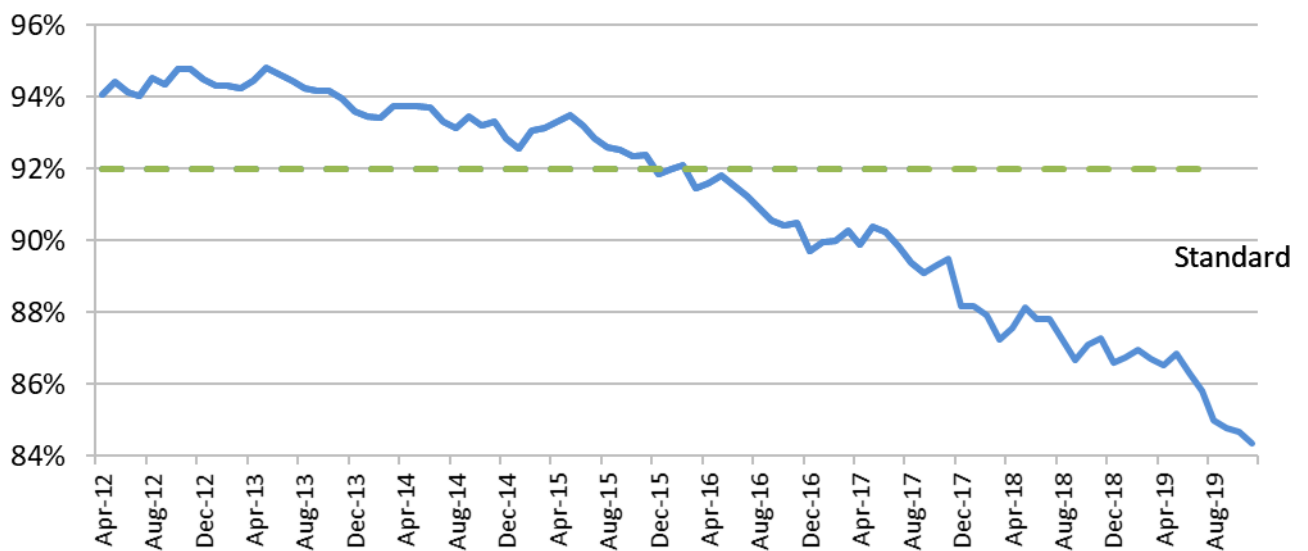
## Further information

Detailed tables of incomplete and completed pathway waiting times by treatment function (specialty), commissioner and provider are available at: <http://www.england.nhs.uk/statistics/rtt-waiting-times/>

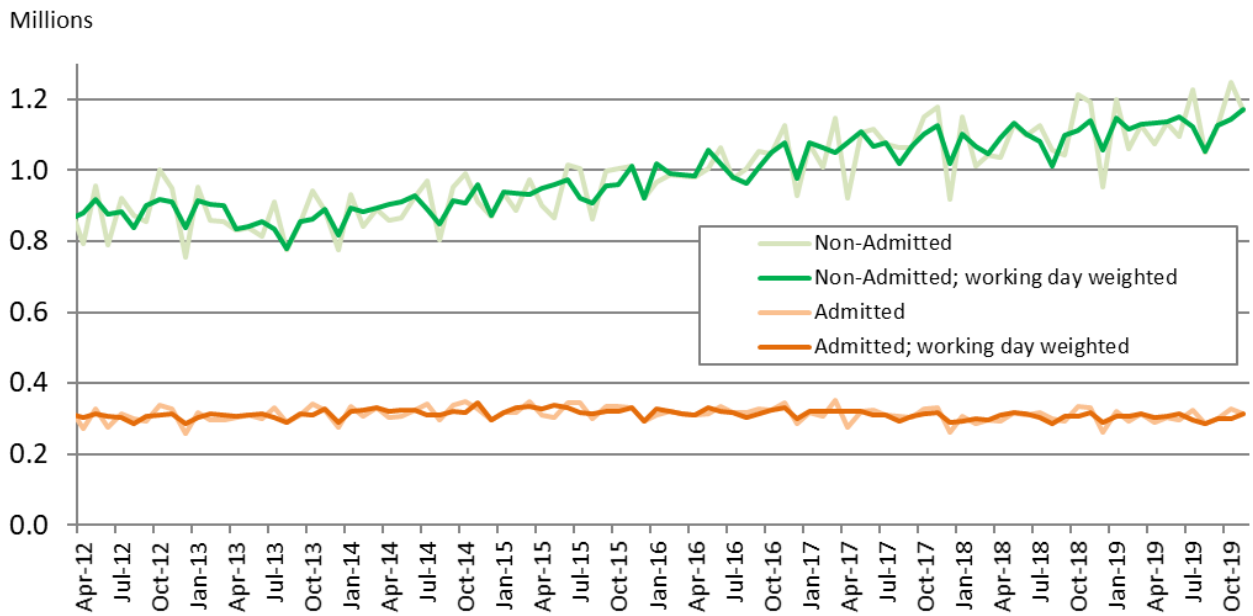
## National trends

- Of patients waiting to start treatment at the end of November 2019, 84.4% were waiting up to 18 weeks. This was 2.9 percentage points lower than in November 2018 (chart 1).
- The number of completed RTT pathways per working day in the 12 months to November 2019 increased by 2.9% on the preceding 12 month period, having taken account of trusts not submitting data (chart 2).
- The number of RTT patients waiting to start treatment at the end of November 2019 (incomplete pathways) increased by 6.0% compared to the end of November 2018, having taken account of trusts not submitting data (chart 3).

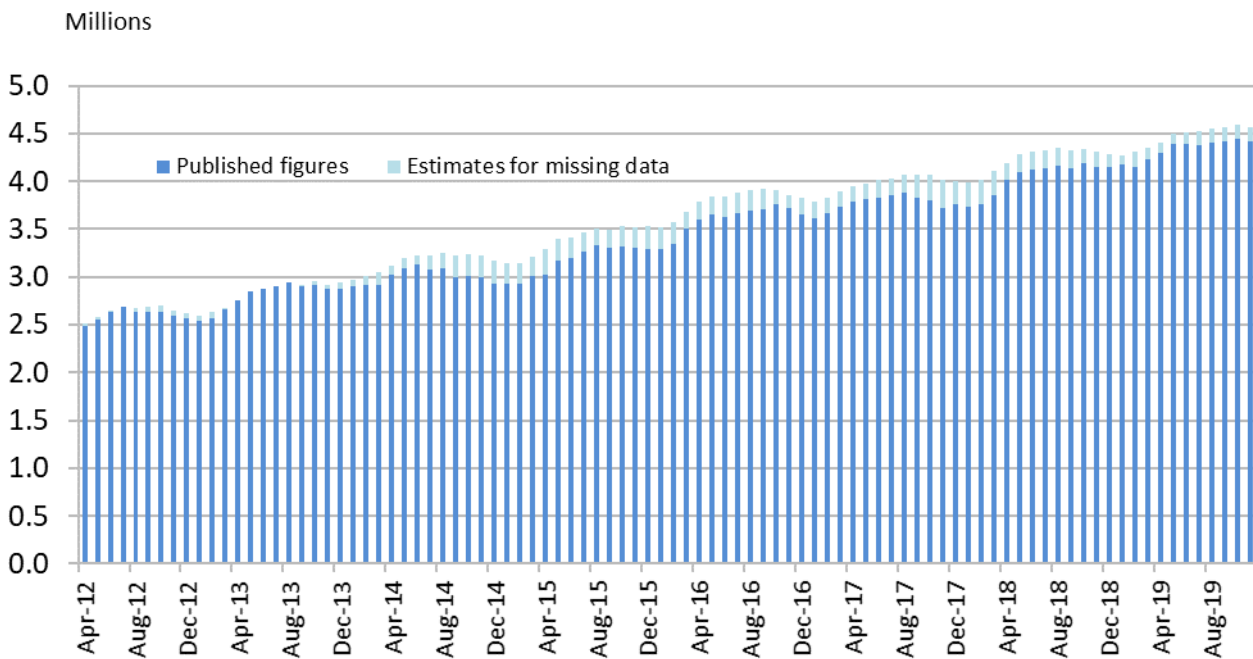
**Chart 1: % of incomplete pathways within 18 weeks (published figures)**



**Chart 2: Number of patients starting RTT treatment, including estimates for missing data<sup>1</sup>**



**Chart 3: Total incomplete RTT pathways**



<sup>1</sup> Working day weighted figures are the number of pathways completed in that month multiplied by the average number of working days in the reference period (Aug-07 to Mar-18) divided by the number of working days that month.

**Table 1 – RTT pathways by treatment function, November 2019, England**

Treatment function	Incomplete pathways		Completed pathways	
	Total	% within 18 weeks	Admitted Total (all)	Non-admitted Total (all)
General Surgery	325,943	82.8%	33,984	71,774
Urology	242,242	82.6%	18,937	45,316
Trauma & Orthopaedics	520,183	81.7%	50,244	106,132
ENT	311,951	80.8%	13,560	77,719
Ophthalmology	444,966	84.4%	51,304	103,811
Oral Surgery	171,378	80.4%	13,599	33,136
Neurosurgery	35,315	78.2%	2,341	6,511
Plastic Surgery	56,744	79.3%	10,636	9,576
Cardiothoracic Surgery	8,681	85.0%	1,922	1,244
General Medicine	42,306	88.7%	2,157	15,023
Gastroenterology	227,082	86.9%	20,293	43,984
Cardiology	221,270	87.0%	8,950	51,277
Dermatology	235,198	85.1%	8,313	77,402
Thoracic Medicine	108,022	88.4%	1,925	28,719
Neurology	143,940	82.5%	876	31,525
Rheumatology	96,543	87.4%	2,101	28,993
Geriatric Medicine	19,635	95.1%	396	9,438
Gynaecology	283,979	85.5%	18,268	75,722
Other	919,829	86.7%	43,387	308,452
<b>England</b>	<b>4,415,207</b>	<b>84.4%</b>	<b>303,193</b>	<b>1,125,754</b>

**Table 2 – RTT waiting times time series, England**

<b>Incomplete pathways</b>			
<b>Month</b>	<b>Median wait (weeks)</b>	<b>92<sup>nd</sup> percentile (weeks)</b>	<b>% within 18 weeks</b>
August 2007	14.3	52.4	57.2%
March 2008	9.8	51.6	66.0%
March 2009	5.6	23.3	87.6%
March 2010	5.2	18.9	91.1%
March 2011	5.5	20.7	89.4%
March 2012	5.2	17.0	93.3%
March 2013	5.5	16.6	94.2%
March 2014	5.5	16.9	93.7%
March 2015	5.6	17.2	93.1%
March 2016	6.4	18.5	91.5%
March 2017	6.2	19.5	90.3%
Mar 2018	6.9	21.9	87.2%
Apr 2018	6.9	22.0	87.6%
May 2018	6.9	21.5	88.1%
June 2018	7.0	21.5	87.8%
July 2018	7.0	21.5	87.8%
August 2018	7.5	22.1	87.3%
Sept 2018	7.6	22.2	86.7%
Oct 2018	7.0	22.0	87.1%
Nov 2018	6.9	22.0	87.3%
Dec 2018	7.6	22.7	86.6%
Jan 2019	7.8	22.5	86.7%
Feb 2019	6.7	22.1	87.0%
Mar 2019	6.9	22.3	86.7%
Apr 2019	7.3	22.6	86.5%
May 2019	7.7	23.0	86.9%
June 2019	7.5	22.4	86.3%
July 2019	7.3	22.7	85.8%
August 2019	8.0	23.7	85.0%
Sept 2019	8.0	23.9	84.8%
Oct 2019	7.6	23.7	84.7%
Nov 2019	7.7	23.9	84.4%

**Notes:**

1. Median and 92<sup>nd</sup> percentile times are calculated from aggregate data, rather than patient level data, and therefore are only estimates of the position on average waits.
2. A more detailed time series table is available at: <http://www.england.nhs.uk/statistics/rtt-waiting-times/>

## Notes to editors

### 1. Referral to Treatment (RTT) pathways

Patients referred for non-emergency consultant-led treatment are on RTT pathways. An RTT pathway is the length of time that a patient waited from referral to start of treatment, or, if they have not yet started treatment, the length of time that a patient has waited so far.

The following activities end the RTT pathway:

- first treatment – the start of the first treatment that is intended to manage a patient's disease, condition or injury in a RTT pathway
- start of active monitoring initiated by the patient
- start of active monitoring initiated by the care professional
- decision not to treat – decision not to treat made or no further contact required
- patient declined offered treatment
- patient died before treatment.

Admitted pathways are the waiting times for patients whose treatment started during the reporting period and involved admission to hospital. These are sometimes referred to as inpatient waiting times. They include the complete time waited from referral until start of inpatient treatment.

Non-admitted pathways are the waiting times for patients whose wait ended during the reporting period for reasons other than an inpatient or day case admission to hospital for treatment. These are sometimes referred to as outpatient waiting times. They include the time waited for patients whose RTT waiting time clock either stopped for treatment or other reasons, such as a patient declining treatment.

Incomplete pathways are the waiting times for patients waiting to start treatment at the end of the reporting period. These patients will be at various stages of their pathway, for example, waiting for diagnostics, an appointment with a consultant, or for admission for a procedure. These are sometimes referred to as waiting list waiting times and the volume of incomplete RTT pathways as the size of the RTT waiting list.

Each pathway relates to an individual referral rather than an individual patient so if a patient was waiting for multiple treatments they may be included in the figures more than once. Where we refer to the number of 'patients' waiting or starting treatment, technically, we are considering the number or percentage of 'pathways'.

The Department of Health published the RTT Rules Suite on 28 November 2007. This document was updated in October 2015 and can be found at:

<https://www.gov.uk/government/publications/right-to-start-consultant-led-treatment-within-18-weeks>

Other guidance documents relating to RTT waiting times can be found at:

<http://www.england.nhs.uk/statistics/rtt-waiting-times/rtt-guidance/>

## **2. RTT waiting time rights and pledges**

The NHS Constitution states that patients have the right to start non-emergency consultant-led treatment within 18 weeks of referral, unless they choose to wait longer or it is clinically appropriate that they wait longer, or for the NHS to take all reasonable steps to offer them a range of alternative providers if this is not possible.

## **3. RTT waiting times standards**

The NHS Constitution standard sets out that more than 92% of patients on incomplete pathways should have been waiting no more than 18 weeks from referral.

The standard leaves an operational tolerance to allow for patients for whom starting treatment within 18 weeks would be inconvenient or clinically inappropriate. These circumstances can be categorised as:

- patient choice – patients who choose to delay treatments for personal or social reasons
- co-operation – patients who do not attend appointments along their pathways
- clinical exceptions – patients for whom it is not clinically appropriate to start treatment within 18 weeks.

In addition, NHS England introduced a zero tolerance of any referral to treatment waits of more than 52 weeks in 2013/14.

In June 2015, Simon Stevens accepted Sir Bruce Keogh's recommendations for improvements to the waiting time standards for elective care. The admitted (90%) and non-admitted (95%) operational standards were abolished, and the incomplete pathway standard (above) became the sole measure of patients' constitutional right to start treatment within 18 weeks. On 1 October 2015, the National Health Service Commissioning Board and Clinical Commissioning Groups (Responsibilities and Standing Rules) (Amendment) (No.2) Regulations 2015 came into effect, removing the provision to report pauses or suspensions in RTT waiting time clocks in monthly RTT returns to NHS England and removing the admitted and non-admitted standards.

## **4. RTT waiting times data collection**

RTT data is collected from providers of consultant-led services for NHS patients in England and is reviewed and signed-off by English commissioners.

The data measures RTT waiting times in weeks, split by treatment function. The treatment functions are based on consultant specialties. The data return includes all patients whose RTT clock stopped at any point in the reporting period or whose RTT clock is still running at the end of the reporting period.

For the period to September 2015, there were two main central returns:

- Unadjusted: covering admitted patients, non-admitted patients and patients on incomplete pathways.



- Adjusted: covering admitted patients on an adjusted basis. Adjustments were permitted to admitted pathways for clock pauses, where a decision to admit for treatment had been made, and the patient had declined at least two reasonable appointment offers for admission. The RTT clock was paused for the duration of the time between the earliest reasonable date offered and the date from which the patient made themselves available for admission for treatment.

For October 2015 data onwards, the reporting requirements changed as follows:

- there is no longer a requirement for providers to submit admitted adjusted data
- unadjusted admitted and non-admitted completed pathway data is still required but will no longer be used for monitoring against operational standards
- the requirement to report incomplete pathway data remains unchanged – and has always been an unadjusted submission
- two new data items were added to the monthly data return: incomplete pathways where a decision has been made to admit the patient for treatment and new RTT pathways.

The figures for incomplete pathways with a decision to admit for treatment consist of cases where first definitive treatment has not started and a clinical decision to admit to a hospital bed for treatment has been made and the patient is awaiting admission, regardless of whether a date to admit has been given.

The difference between the values submitted for this data item and for total incomplete pathways equates to the number of incomplete pathways without a decision to admit for treatment. This will include patients where first contact has not yet been made, patients waiting for first definitive treatment as an outpatient and patients where a decision to admit for a diagnostic procedure has been made.

For new RTT pathways, providers are asked to submit the number of new RTT pathways in the reporting month. In other words, RTT pathways where the clock start date is within the reporting month. This will include those where the clock also stopped within the reporting month.

A spreadsheet showing a time series for total admitted, non-admitted and incomplete pathways with and without estimates for missing data accompanies this statistical press notice.

## **5. RTT data availability**

Data for admitted patients (patients whose RTT clock stopped with an inpatient/day case admission) has been published each month since January 2007 on an unadjusted basis, and was published each month between March 2008 and September 2015 on an adjusted basis.

Data for non-admitted patients (patients whose RTT clock stopped during the month for reasons other than an inpatient/day case admission) and incomplete RTT times for patients whose RTT clock is still running has been published each month since August 2007.

RTT waiting times figures are published to a pre-announced timetable, roughly 6 weeks after the end of the reference month. Publication day is typically the second Thursday of each calendar month.

Revisions to published figures are released on a six-monthly basis in accordance with the NHS England and NHS Improvement statistics revision policy. This policy is available from the NHS England website at the following address:

[https://www.england.nhs.uk/statistics/wp-content/uploads/sites/2/2018/12/SDCS-Revisions-Policy\\_v1.0.pdf](https://www.england.nhs.uk/statistics/wp-content/uploads/sites/2/2018/12/SDCS-Revisions-Policy_v1.0.pdf). RTT revisions are usually released in January and July.

Three acute trusts did not submit data on incomplete RTT pathways for November 2019. Factoring in estimates based on the latest data submitted for each of these missing acute trusts suggests the total number of RTT patients waiting to start treatment at the end of November 2019 may have been 4.6 million patients. The latest figures submitted by missing acute trusts are shown in the table below.

<b>Trust</b>	<b>Latest available incomplete RTT pathway data (rounded to nearest hundred)</b>	<b>Month incomplete pathway data last submitted</b>
Mid Essex Hospital Services NHS Trust	46,100	Dec-17
North West Anglia NHS Foundation Trust	38,300	Jun-19
Royal Free London NHS Foundation Trust	66,000	Jan-19

One non-acute trust – Kent Community Health NHS Foundation Trust (RYY) – was also unable to submit data on incomplete RTT pathways for November 2019. An estimate for this trust has not been included in the estimate of the total number of RTT patients at England level above. Based on the latest data submitted (6,510 incomplete pathways in October 2019), factoring in estimates for this trust would not make a material difference to the England level estimate.

To estimate the impact of missing data on completed (admitted and non-admitted) pathways, the total number of pathways per working day in each provider in the month prior to the gap in reporting can be applied to all missing months multiplied by the relevant number of working days in each month. Using this approach, the number of completed RTT pathways per working day in the 12 months to November 2019 increased by 2.9% on the preceding 12 month period.

The impact of missing data varies depending on the measure being considered. The biggest impact is on measures of volume, such as the number of completed pathways and the size of the RTT waiting list. The impact of missing trusts on the percentage of incomplete pathways within 18 weeks at England is generally minimal, however, where a large trust that has previously had a particular high or low percentage of incomplete pathways within 18 weeks does not submit data there can be a material impact on the England-level percentage.

For example, Medway NHS Foundation Trust was unable to submit data for October or November 2015. At the end of September 2015, 70.1 per cent of patients waiting to start treatment at Medway NHS Foundation Trust were waiting up to 18 weeks. The impact of

removing the figures for this trust from the published September 2015 England-level figure of 92.5% of incomplete pathways within 18 weeks is an increase of 0.25 percentage points to 92.8%. This also caused a discontinuity in the specialty level, commissioner and regional series between September and October 2015. For example, removing Medway from the September 2015 figure for the South of England Commissioning Region would change it from the published 91.0% to 92.0%, an increase of 1.0 percentage points.

## **6. Median and 92<sup>nd</sup> percentile waiting times**

The median is the preferred measure of the average waiting time as it is less susceptible to extreme values than the mean. The median waiting time is the middle value when all patients are ordered by length of wait, in other words, the midpoint of the RTT waiting times distribution or 50th percentile. For incomplete pathways, 50% of patients were waiting within the median waiting time.

The 92<sup>nd</sup> percentile waiting time is shown for incomplete pathways to correspond with the 92% operational standard. This is the time that 92% of patients had been waiting less than (and 8% of patients had been waiting more than). For example, if the 92<sup>nd</sup> percentile is 17 weeks, then 92% of patients had been waiting less than 17 weeks at the end of the reporting period and 8% of patients had been waiting more than 17 weeks.

It should be noted that median and 92<sup>nd</sup> percentile waiting times are calculated from aggregate data, rather than patient-level data, and therefore are only estimates of the position on average waits.

## **7. Interpretation of RTT waiting times**

Care should be taken when making month-on-month comparisons of these figures as measures of waiting time performance are subject to seasonality. For example, adverse weather during winter may change the balance between elective and emergency care. Similarly, the number of patients starting treatment will be influenced by the number of working days in the calendar month.

## **8. National Statistics**

The United Kingdom Statistics Authority has designated these statistics as National Statistics, in accordance with the Statistics and Registration Service Act 2007 and signifying compliance with the Code of Practice for Official Statistics. Designation can be broadly interpreted to mean that the statistics:

- meet identified user needs
- are well explained and readily accessible
- are produced according to sound methods, and
- are managed impartially and objectively in the public interest.

Once statistics have been designated as National Statistics it is a statutory requirement that the Code of Practice shall continue to be observed.

## **9. Feedback welcomed**

We welcome feedback on the content and presentation of RTT statistics within this statistical press notice and those published on the NHS England website. If you have any comments on this, or any other issues regarding RTT statistics, please email [england.rtt@nhs.net](mailto:england.rtt@nhs.net)

## **10. Additional Information**

For press enquiries, please e-mail the NHS England media team at [nhsengland.media@nhs.net](mailto:nhsengland.media@nhs.net) or call 0113 825 0958 or 0113 825 0959.

The Government Statistical Service (GSS) statistician responsible for producing these data is:

Debbie Moon  
Performance Analysis Team – Activity and Planning  
NHS England and NHS Improvement  
Room 5E24, Quarry House, Quarry Hill, Leeds LS2 7UE  
Email: [england.rtt@nhs.net](mailto:england.rtt@nhs.net)