



STATISTICAL PRESS NOTICE

MONTHLY CRITICAL CARE BEDS AND CANCELLED URGENT OPERATIONS (MSITREP) DATA, ENGLAND

Main Findings - January 2020:

Critical Care Beds

- There were 4,123 **adult critical care beds** open and 3,423 occupied, giving an occupancy rate of 83.0%. This is higher than the occupancy rate observed last month, which was 75.3%, and lower than in January 2019 (85.3%).
- There were 312 **paediatric intensive care beds** open and 247 occupied, giving an occupancy rate of 79.2%. This is lower than the occupancy rate observed last month, which was 79.6%, and lower than in January 2019 (79.3%).
- There were 1,439 **neonatal critical care beds** open and 1,024 occupied, giving an occupancy rate of 71.2%. This is lower than the occupancy rate observed last month, which was 71.5%, and higher than in January 2019 (70.1%).

Table 1 and Graph 1 show information on critical care bed occupancy from January 2018 to January 2020.

Urgent Operations Cancelled

- The number of **urgent operations cancelled** was 357 in January 2020, which compares to 332 last month, and 366 in January 2019.
- The number of **urgent operations cancelled for the 2nd or more time** was 9 in January 2020.

Table 2 and Graph 2 show information on urgent operations cancelled from January 2018 to January 2020.

Details of Monthly Critical Care Beds Capacity and Urgent Operations Cancelled data for individual organisations are available at: [NHS England Statistics Critical Care](#).

In addition, data on Cancelled Elective Operations can be found at: [NHS England Statistics Cancelled Operations](#).

Table 1 – Critical Care Bed Occupancy Rates – January 2018 to January 2020^{1, 2}

Month	Adult Critical Care Beds			Paediatric Intensive Care Beds			Neonatal Critical Care Beds		
	Open	Occupied	%	Open	Occupied	%	Open	Occupied	%
Jan 18	4,085	3,537	86.6%	457	353	77.2%	1,441	1,031	71.5%
Feb 18	4,074	3,478	85.4%	459	364	79.3%	1,421	990	69.7%
Mar 18	4,064	3,355	82.6%	455	358	78.7%	1,420	1,026	72.3%
Apr 18	4,057	3,322	81.9%	469	346	73.8%	1,422	1,027	72.2%
May 18	4,050	3,235	79.9%	468	343	73.3%	1,430	1,043	72.9%
Jun 18	4,082	3,251	79.6%	467	352	75.4%	1,424	1,057	74.2%
Jul 18	4,077	3,192	78.3%	471	341	72.4%	1,417	989	69.8%
Aug 18	4,063	3,187	78.4%	467	309	66.2%	1,421	996	70.1%
Sep 18	4,085	3,268	80.0%	468	356	76.1%	1,422	985	69.3%
Oct 18	4,075	3,293	80.8%	470	363	77.2%	1,422	1,050	73.8%
Nov 18	4,110	3,400	82.7%	339	297	87.6%	1,417	1,028	72.5%
Dec 18	4,082	3,079	75.4%	321	238	74.1%	1,413	953	67.4%
Jan 19	4,140	3,532	85.3%	323	256	79.3%	1,428	1,001	70.1%
Feb 19	4,157	3,388	81.5%	328	254	77.4%	1,426	1,000	70.1%
Mar 19	4,119	3,323	80.7%	326	252	77.3%	1,422	1,012	71.2%
Apr 19	4,119	3,328	80.8%	322	248	77.0%	1,441	1,011	70.2%
May 19	4,106	3,252	79.2%	322	236	73.3%	1,439	1,019	70.8%
Jun 19	4,120	3,320	80.6%	323	242	74.9%	1,441	1,056	73.3%
Jul 19	4,079	3,245	79.6%	320	236	73.8%	1,441	1,007	69.9%
Aug 19	4,084	3,241	79.4%	309	200	64.7%	1,446	1,003	69.4%
Sep 19	4,090	3,305	80.8%	312	232	74.4%	1,441	1,007	69.9%
Oct 19	4,125	3,339	80.9%	306	234	76.5%	1,433	999	69.7%
Nov 19	4,121	3,416	82.9%	321	268	83.5%	1,454	1,061	73.0%
Dec 19	4,048	3,048	75.3%	309	246	79.6%	1,449	1,036	71.5%
Jan 20	4,123	3,423	83.0%	312	247	79.2%	1,439	1,024	71.2%

¹Data relating to the number of available and occupied critical care beds is a monthly snapshot taken at midnight on the last Thursday of each month and can fluctuate from month to month.

²Paediatric Intensive Care Beds: in November 2018, NHS England published refreshed [guidance](#) for MSitRep which provided clarification on the definition for Paediatric Intensive Care (PIC) bed availability and occupancy. This update was made to ensure definitions reflected the latest terminology and Paediatric Intensive Care Society (PICS) standards, to improve data quality and address overcounting of PIC beds (including possible inclusion of some high dependency unit (HDU, level 2) beds). Therefore, PIC bed availability data from November 2018 shows a step change, with the 339 reported beds in November 2018 being approximately 130 – 140 lower than previously in 2018-19 (around 460-470 available beds).

Graph 1 – Critical Care Bed Occupancy Rates

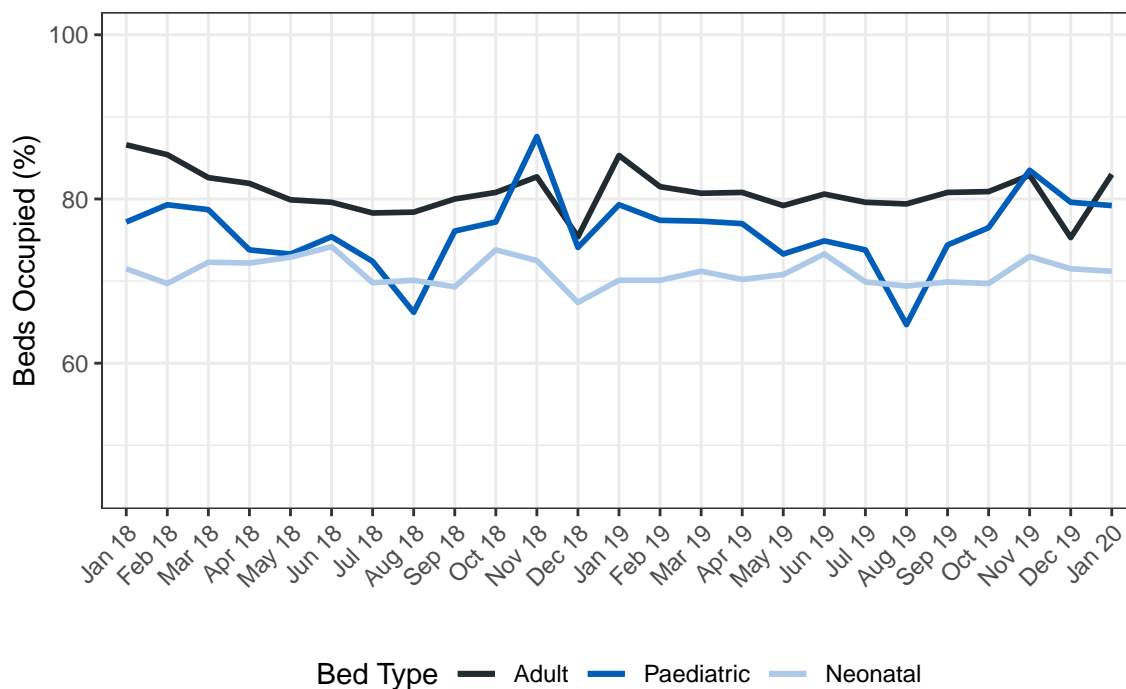
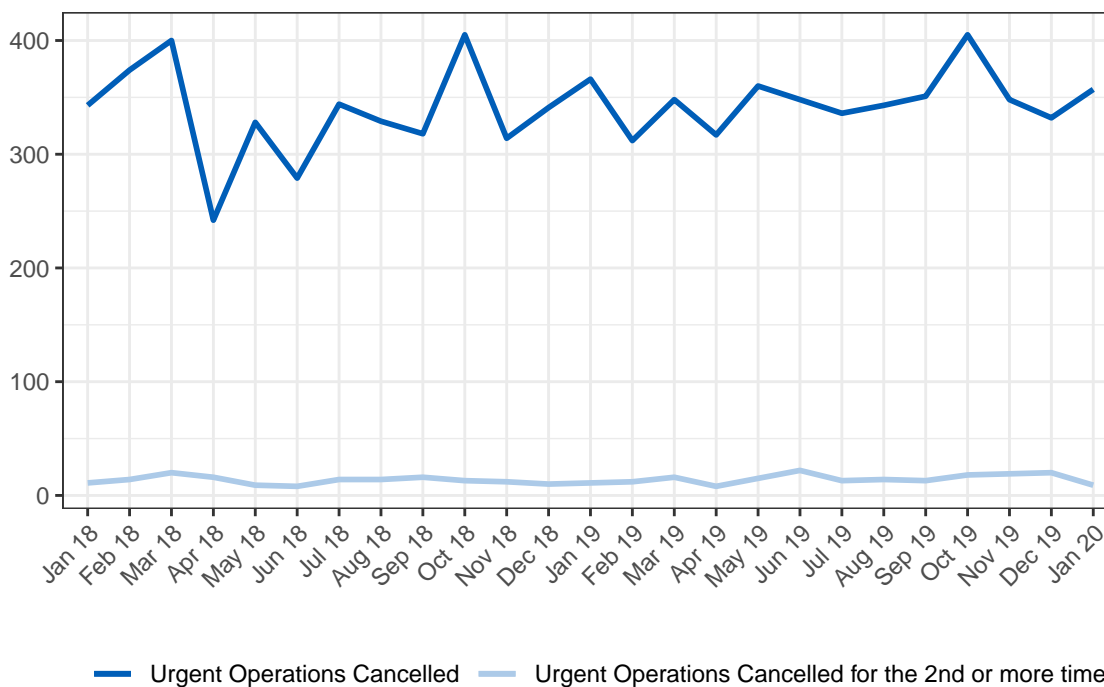


Table 2 – Urgent Operations Cancelled – January 2018 to January 2020

Month	Urgent Operations Cancelled	Urgent Operations Cancelled for the 2nd or more time
Jan 18	343	11
Feb 18	374	14
Mar 18	400	20
Apr 18	242	16
May 18	328	9
Jun 18	279	8
Jul 18	344	14
Aug 18	329	14
Sep 18	318	16
Oct 18	405	13
Nov 18	314	12
Dec 18	341	10
Jan 19	366	11
Feb 19	312	12
Mar 19	348	16
Apr 19	317	8
May 19	360	15
Jun 19	348	22
Jul 19	336	13
Aug 19	343	14
Sep 19	351	13
Oct 19	405	18
Nov 19	348	19
Dec 19	332	20
Jan 20	357	9

Graph 2 – Urgent Operations Cancelled

Statistical Notes to Editors

1. Critical Care Data

The figures on Adult Critical Care, Paediatric Intensive Care and Neonatal Critical Care bed occupancy are “snapshot” figures taken at midnight on the last Thursday of each month. Therefore, they will not reflect varying levels of bed occupancy throughout the day, week and month.

In November 2018, NHS England published refreshed [guidance](#) for MSitRep which provided clarification on the definition for Paediatric Intensive Care (PIC) bed availability and occupancy. This update was made to ensure definitions reflected the latest terminology and Paediatric Intensive Care Society (PICS) standards, to improve data quality and address overcounting of PICs beds (including possible inclusion of some high dependency unit (HDU, level 2) beds).

As a result of the refreshed guidance, MSitRep data shows a step change in PIC bed availability. From November 2018, PIC availability data was reported by the Trusts commissioned to provide level 3 PIC. Prior to this, around 20 additional Trusts had also been submitting PIC data, these are now no longer reporting PIC data. Data from the commissioned Trusts, may also be impacted if they had inadvertently included level 2 HDU beds previously. In November 2018, 339 available PIC beds were reported, approximately 130 – 140 lower than reported previously in 2018-19 (around 460-470 available beds).

NHS England and NHS Improvement commission paediatric critical care nationally; further information is available via the Paediatric Intensive Care Audit Network.

2. Data Quality

MSitRep data have been collected and published since August 2010. Prior to August 2010, data was collected weekly and was unvalidated management information.

Critical care data published until January 2011 should be treated with a degree of caution as data on critical care beds was published biannually in a separate collection until January 2011. Since February 2011, there has been a significant improvement in the coverage and accuracy of this data.

3. Data Availability

MSitRep data are published to a monthly timetable with data being published around 6 to 7 weeks after the end of the reference period³. The next release of data for this collection will be Thursday 9th April 2020 (relating to February 2020). The full set of publication dates is described in the [12 month statistics calendar](#).

4. Revisions

Revisions to previous months' data are made in line with NHS England and NHS Improvement revisions and corrections policy for performance monitoring data. Revisions are typically made on a six-monthly cycle. The revisions policy can be found on the NHS England website at: [Statistics Code of Compliance](#).

Revisions were last published in December 2019, covering the period April 2019 to September 2019. Only one organisation submitted a revision for this period, and this was for April 2019.

5. Feedback Welcomed

We welcome feedback on the content and presentation of Monthly Critical Care Bed Capacity and Urgent Operations Cancelled data within this Statistical Press Notice and those published on NHS England's website. Please email any comments, or any other issues regarding the MSitRep data, to: england.nhsdata@nhs.net.

Additional Information

For press enquiries please contact the NHS England and NHS Improvement media team on 0113 825 0958 or 0113 825 0959. The Government Statistical Service (GSS) statistician responsible for producing these data is:

Katie Tither

Performance Analysis Team (PAT) Urgent and Emergency Care (UEC) Team
NHS England and NHS Improvement

Room 5E15, Quarry House, Quarry Hill, Leeds LS2 7UE

For data queries, email: england.nhsdata@nhs.net

³From June 2018, NHS England aligned the publication of the MSitRep collection with the monthly NHS England publication of the Combined Performance Statistics to improve data coherence.