

NHS Diagnostic Waiting Times and Activity Data

NHS England and NHS Improvement



NHS Diagnostic Waiting Times and Activity Data

August 2021 Monthly Report

Version number: 1.0

First published: 14 October 2021

Prepared by: Performance Analysis Team (Central)
NHS England and NHS Improvement

Contents

Contents	3
1 Executive summary	4
1.1 National Statistics	5
2 August 2021 Key Findings	6
3 National Trends	7
3.1 6+ Week Waits	7
3.2 Total Waiting List	8
3.3 Median Waiting Time	9
3.4 Total Activity	9
4 August 2021 Data	11
4.1 6+ Week Waits	11
4.2 Total Waiting List	13
4.3 Median Waiting Times	14
4.4 Total Activity	14
5 Annex	16
5.1 Methodology	16
5.2 Data Revisions	16
5.3 Data Availability	16
5.4 Glossary	16
5.5 Feedback Welcomed	17
5.6 Consultation	17
5.7 Additional Information	17

1 Executive summary

This report presents a monthly summary of diagnostic waiting times and activity across the NHS in England. This monthly report is part of a routine series of publications produced by NHS England and NHS Improvement.

The data presented in this report measures the current waiting times of patients still waiting for any of 15 key diagnostic tests or procedures at the month end. This data is split by number of weeks waiting and by test. The waiting times reported are for those patients who have been referred for a test, but whose test had not taken place by the end of the reporting period. Referrals may be from a variety of sources including GPs.

One of the main measurements covered in this report is the number and proportion of patients waiting six weeks or more for a diagnostic test, from time of referral.

This six-week diagnostic wait was initially introduced as a 'milestone' from March 2008 towards achieving the standard Referral to Treatment wait of 18 weeks by December 2008, but diagnostic waiting times now form part of the NHS Constitution. This gives patients the legal right to treatment within 18 weeks of referral (18 week RTT) and as part of this, pledges that patients should not be required to wait six weeks or more for a diagnostic test.

NHS England and NHS Improvement's planning guidance states that there is a threshold of 1% for this pledge. The financial penalty for non-delivery of the standard is set out in the NHS Standard Contract 2020/21.

The 15 key diagnostic tests included in this report are:

Imaging

- Magnetic Resonance Imaging (MRI)
- Computerised Tomography (CT)
- Non-obstetric Ultrasound
- Barium Enema
- Dual-Energy X-Ray Absorptiometry (DEXA) Scan

Physiological Measurements

- Audiology Assessments
- Echocardiography
- Electrophysiology
- Neurophysiology – Peripheral Neurophysiology
- Respiratory Physiology – Sleep Studies
- Urodynamics – Pressures & Flows

Endoscopy

- Gastroscopy
- Colonoscopy
- Flexible Sigmoidoscopy
- Cystoscopy

For detailed descriptions of each diagnostic test please see the [collection guidance documentation](#).

Some of the key terms used throughout this report are outlined below:

- **6+ Waits**
A count of the number of patients waiting six weeks or more for a diagnostic test at month end from referral.
- **Activity**
A count of the number of diagnostic tests undertaken during the month.
- **Diagnostic Test**
A test or procedure of which the primary function is to identify a patient's disease or condition to allow a medical diagnosis to be made.
- **Waiting List**
A count of the number of patients that are waiting for a diagnostic test at the end of the month.

A more comprehensive glossary is available in the Annex.

All England figures quoted are commissioner based. Commissioner based returns reflect data for patients for whom English commissioners are responsible.

1.1 National Statistics

The UK Statistics Authority has designated these statistics as National Statistics, in accordance with the Statistics and Registration Service Act 2007 and signifying compliance with the Code of Practice for Official Statistics.

Designation can be broadly interpreted to mean that the statistics:

- meet identified user needs;
- are well explained and readily accessible;
- are produced according to sound methods; and
- are managed impartially and objectively in the public interest.

Once statistics have been designated as National Statistics it is a statutory requirement that the Code of Practice shall continue to be observed.

2 August 2021 Key Findings

- Diagnostic test activity and waiting times have been impacted by the COVID-19 pandemic and data for the current reporting period may therefore not be comparable to previous periods.
- The total number of patients waiting six weeks or more from referral for one of the 15 key diagnostic tests at the end of August 2021 was 369,100. This was 27.1% of the total number of patients waiting at the end of the month and the best performance in the last 12 months.
- Nationally, the operational standard of less than 1% of patients waiting six weeks or more was not met this month.
- Compared with August 2020 the total number of patients waiting six weeks or more decreased by 103,400 while the proportion of patients waiting six weeks or more decreased by 10.9 percentage points.
- In the last 12 months, the proportion of patients waiting six weeks or more at the end of a month has varied between 22.3% (May 2021) and 33.3% (January 2021).
- At the end of August 2021, the test with the smallest proportion of patients waiting six weeks or more was Electrophysiology with 10.3%. The test with the highest proportion was Urodynamics, with 49.9% of patients waiting six weeks or more.
- An alternative measure of diagnostic waiting times is the average (median) waiting time. The estimated average time that a patient had been waiting for a diagnostic test was 3.4 weeks at the end of August 2021.
- There were 1,361,200 patients waiting for a key diagnostic test at the end of August 2021. This is an increase of 119,400 from August 2020. A drop in the number of patients waiting for a diagnostic test in March 2020 as a result of COVID-19 was followed by growth in the waiting list, with some subsequent reductions.
- A total of 1,821,800 diagnostic tests were undertaken in August 2021. This is an increase of 291,400 from August 2020. Monthly activity was increasing slightly until it fell sharply from March 2020 before services started to resume from August 2020 onwards.

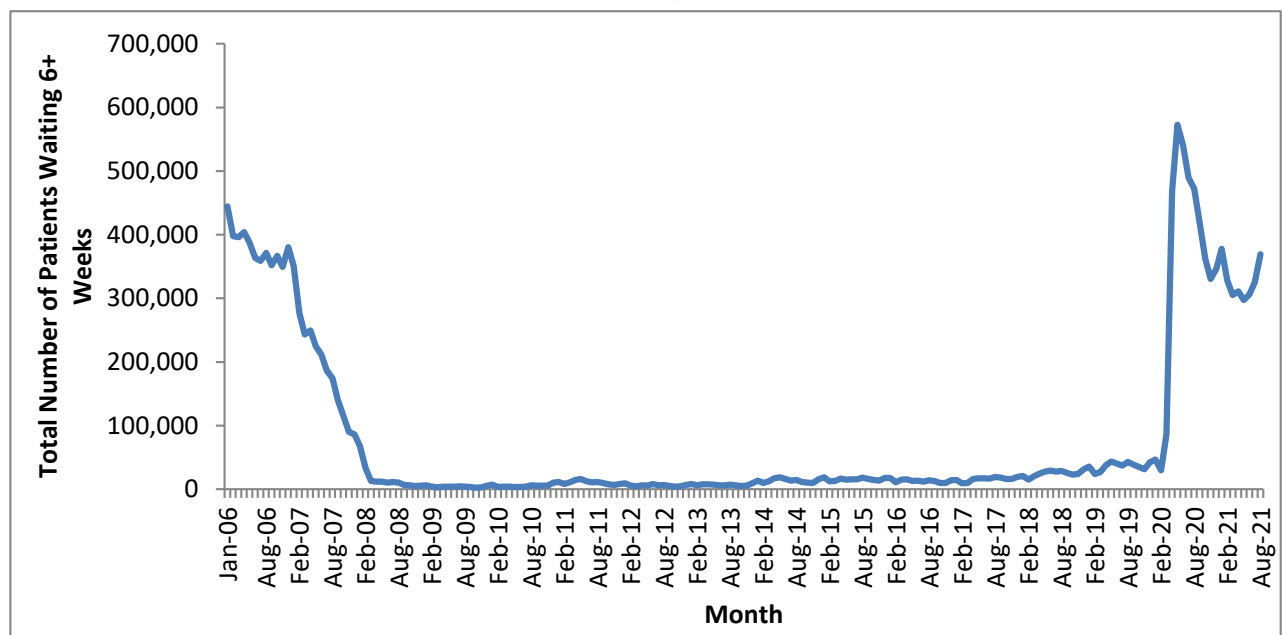
3 National Trends

This section analyses trends in monthly diagnostic waiting times and activity data that has been collected since January 2006.

3.1 6+ Week Waits

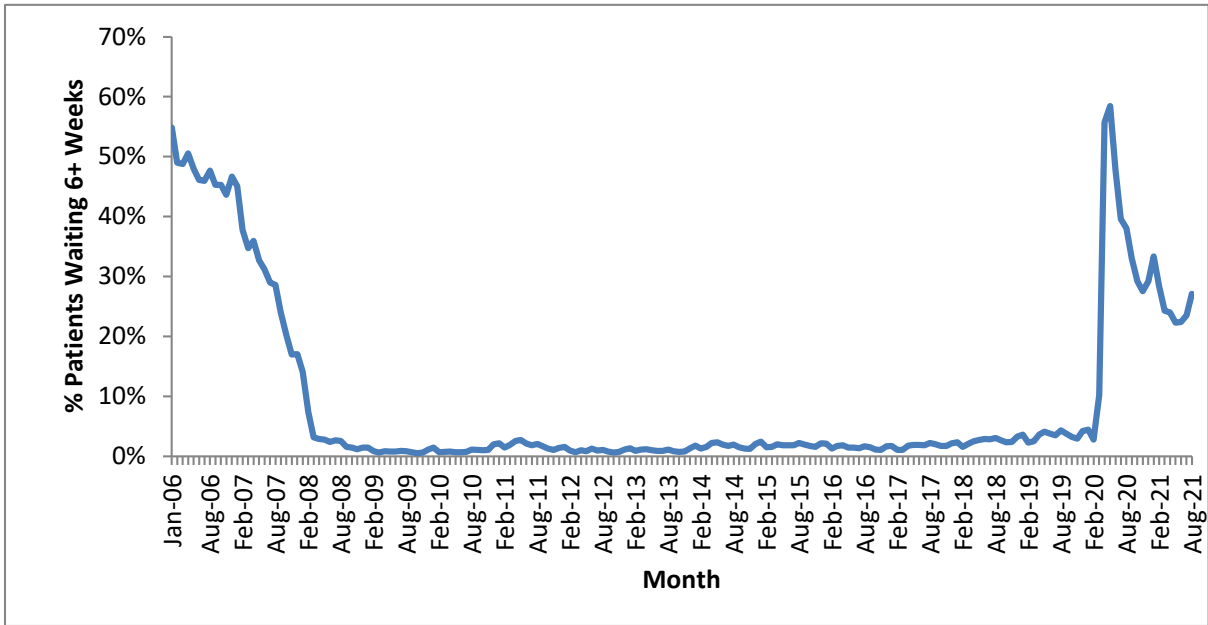
- 3.1.1. The total number of patients waiting six weeks or more dropped sharply between January 2007 and March 2008 (Chart 1), as Trusts worked towards the NHS Improvement Plan (June 2004) milestone that no one should wait six weeks or more for a diagnostic test by March 2008.
- 3.1.2. Since March 2008 there were fluctuations in the total number of patients waiting six weeks or more, with a significant rise between December 2013 and May 2014. The number of patients waiting six weeks or more rose sharply in August 2020 due to the impact of COVID-19. In August 2021 there was an increase of 43,900 in the number of patients waiting six weeks or more from the previous month.

Chart 1: Total number of patients waiting 6+ weeks at month end for all tests January 2006 to August 2021



- 3.1.3. The proportion of patients waiting six weeks or more shows a similar drop between January 2007 and the 6-week milestone in March 2008 before stabilising (Chart 2) prior to the COVID-19 period. In the last 12 months, the proportion of patients waiting six weeks or more at the end of a month has varied between 22.3% (May 2021) and 33.3% (January 2021). The 1% operational standard was last met in November 2013.

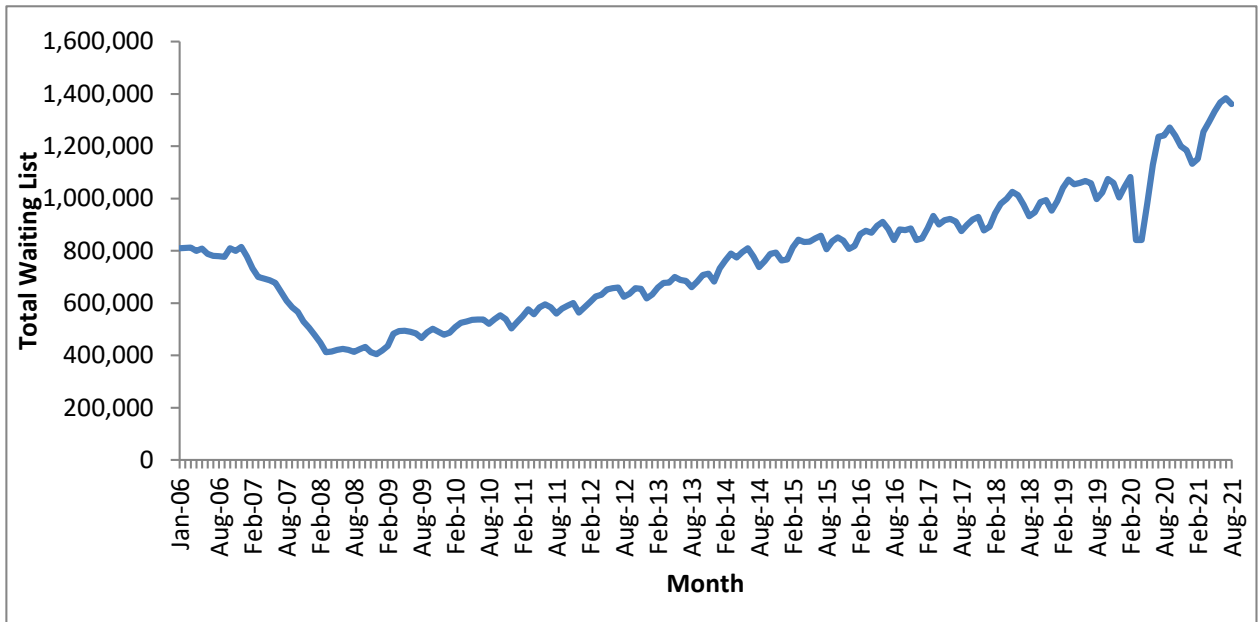
**Chart 2: Percentage of patients waiting 6+ weeks at month end for all tests
January 2006 to August 2021**



3.2 Total Waiting List

3.2.1. As with the number and proportion of patients waiting six weeks or more, the total number of patients waiting at the month end dropped dramatically between January 2007 and the 6-week milestone in March 2008 (Chart 3). Following a period with a stable total waiting list between March 2008 and January 2009, the underlying trend showed a steady increase before dropping sharply in March 2020 and subsequently rising due to the impact of COVID-19.

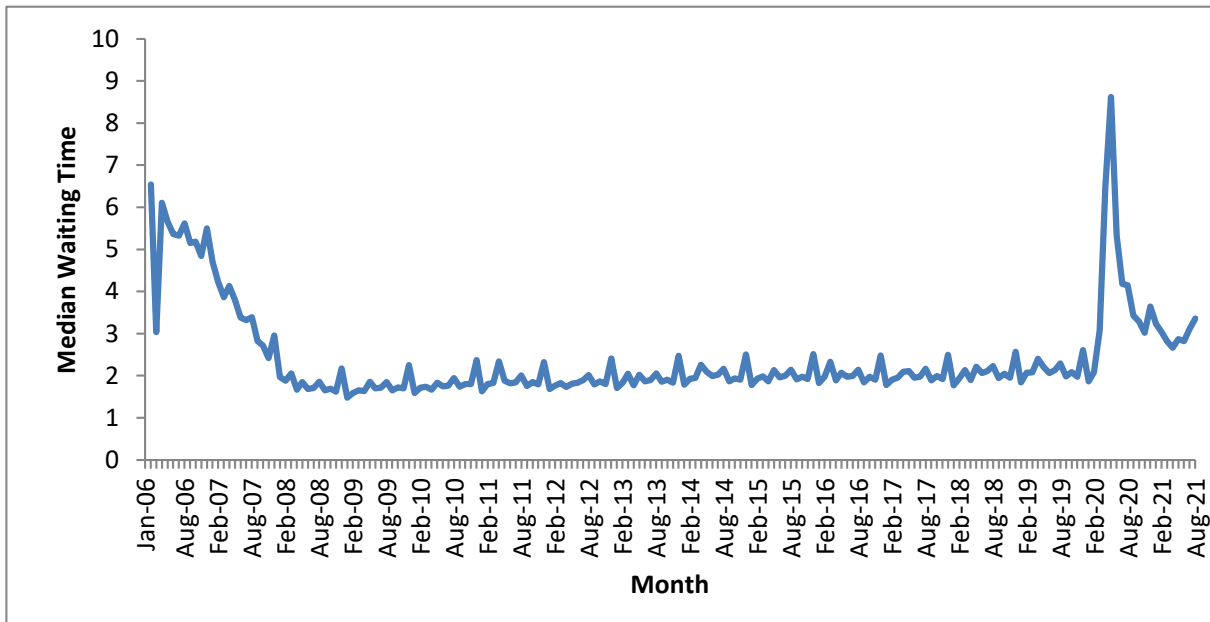
**Chart 3: Total number of patients waiting at month end for all tests
January 2006 to August 2021**



3.3 Median Waiting Time

3.3.1. The average (median) waiting time displays a similar trend to the total waiting list and 6 weeks or more waits. After a rapid decrease in the two years leading to the 6-week milestone, the median waiting time remained stable until the COVID-19 period (Chart 4). The data shows significant increases during December every year as a result of the higher number of bank holidays and resulting lower activity. In the last 12 months, the median waiting time had a high of 3.6 weeks (December 2020) and a low of 2.7 weeks (April 2021). The median waiting time in August 2021 was 3.4 weeks.

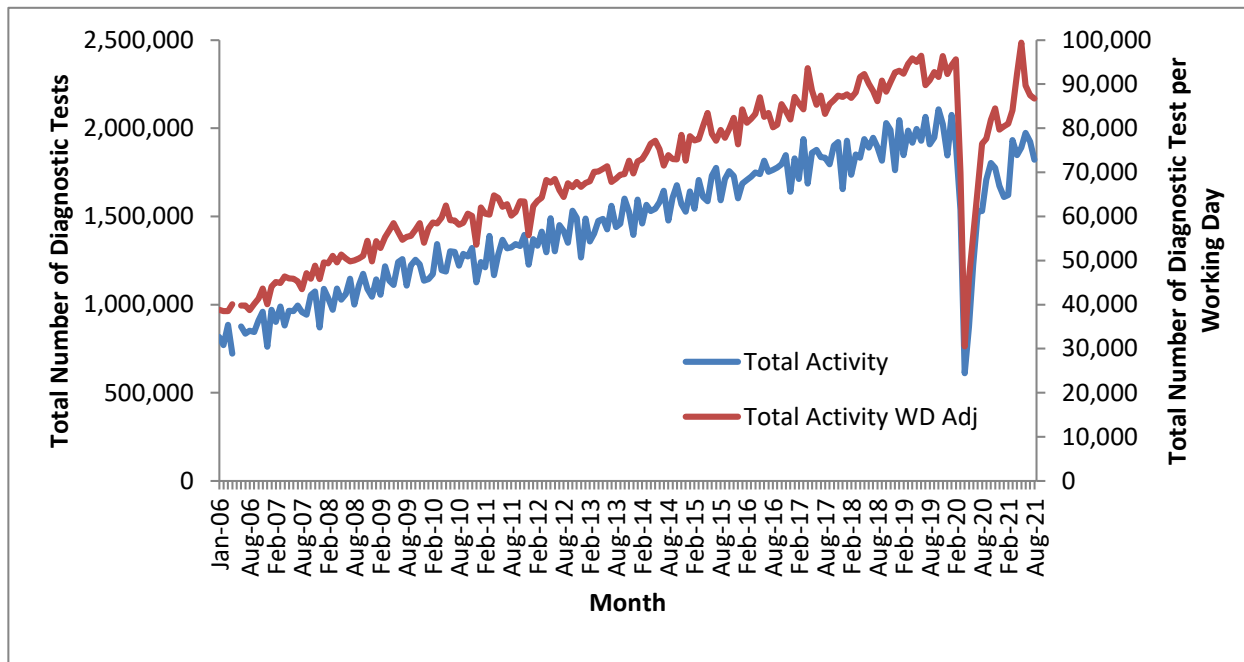
Chart 4: Median waiting time for all tests – January 2006 to August 2021



3.4 Total Activity

- 3.4.1. The monthly activity figure can fluctuate significantly month to month, with particularly notable decreases in December due to the bank holidays. However, the underlying trend has shown an increase since January 2006 until the COVID-19 period. If the data is adjusted to show activity per working day, the monthly variation becomes less pronounced (Chart 5).
- 3.4.2. Monthly activity decreased markedly following the start of the COVID-19 pandemic. Total activity in August 2020 fell by 68% compared to April 2019 but subsequently started to recover with some further set-backs.

Chart 5: Total activity and working day adjusted activity per month for all tests January 2006 to August 2021



Note: Activity data was not collected in May 2006 and all activity time series graphs will show missing values for that month

3.4.3. In the previous 12 months, individual tests have shown differing changes in activity. The test with the smallest change in activity was Barium Enema where August 2021 activity was 0.8% lower per month than August 2020 (Table 1).

Table 1: Total activity, by test – August 2020 and August 2021

	Aug-20	Aug-21	Average monthly growth
MRI	250,464	299,607	1.5%
CT	506,393	569,749	1.0%
Non-obstetric Ultrasound	468,557	549,570	1.3%
Barium Enema	2,653	2,915	0.8%
Dexa Scan	25,469	35,133	2.7%
Audiology Assessments	47,044	74,215	3.9%
Echocardiography	103,496	119,489	1.2%
Electrophysiology	487	774	3.9%
Peripheral Neurophysiology	13,243	17,360	2.3%
Sleep Studies	6,807	8,836	2.2%
Urodynamics	3,593	4,988	2.8%
Colonoscopy	32,418	44,282	2.6%
Flexi Sigmoidoscopy	13,647	15,741	1.2%
Cystoscopy	19,714	25,551	2.2%
Gastroscopy	36,381	53,554	3.3%
All Tests	1,530,366	1,821,764	1.5%

4 August 2021 Data

This section analyses the August 2021 diagnostic waiting times and activity data and includes comparisons between tests, regions, providers and commissioners.

6+ week waits performance became significantly worse from March to May 2020 due to the impact of the COVID-19 crisis but started to improve from June 2020.

4.1 6+ Week Waits

- 4.1.1. At the end of August 2021, there were a total of 369,100 patients waiting six weeks or more from referral for one of the 15 key diagnostic tests. This was 27.1% of the total number of patients waiting at the end of the month.
- 4.1.2. Compared with August 2020, the number of patients waiting six weeks or more decreased by 103,400, while the proportion of patients waiting six weeks or more decreased by 10.9 percentage points.
- 4.1.3. Compared with August 2020, the test with the largest increase in the proportion of patients waiting six weeks or more was Electrophysiology, which increased by 2.9 percentage points. The test with the largest decrease was Audiology Assessment, which decreased by 28.5 percentage points (Table 2).

Table 2: Proportion of patients waiting 6+ weeks, by test – August 2020 and August 2021

	Aug-20	Aug-21	Difference (%age points)
MRI	28.1%	24.3%	-3.7
CT	28.8%	18.3%	-10.5
Non-obstetric Ultrasound	27.9%	20.8%	-7.2
Barium Enema	21.8%	10.5%	-11.4
Dexa Scan	48.0%	31.4%	-16.6
Audiology Assessments	52.3%	23.8%	-28.5
Echocardiography	46.5%	43.5%	-3.0
Electrophysiology	7.4%	10.3%	2.9
Peripheral Neurophysiology	50.3%	33.8%	-16.5
Sleep Studies	50.7%	26.2%	-24.5
Urodynamics	61.7%	49.9%	-11.8
Colonoscopy	58.0%	41.8%	-16.2
Flexi Sigmoidoscopy	61.3%	42.8%	-18.4
Cystoscopy	50.8%	35.1%	-15.8
Gastroscopy	61.9%	40.8%	-21.1
All Tests	38.1%	27.1%	-10.9

Note: Figures may differ due to rounding.

- 4.1.4. Compared with August 2020, the test type with the smallest decrease in the proportion of patients waiting six weeks or more was Imaging with a decrease of 7.5 percentage points. Physiological Measurement decreased

by 11.9 percentage points, while Endoscopy decreased by 18.5 percentage points (Table 3). See section 5.4 for which tests are included under the different test types.

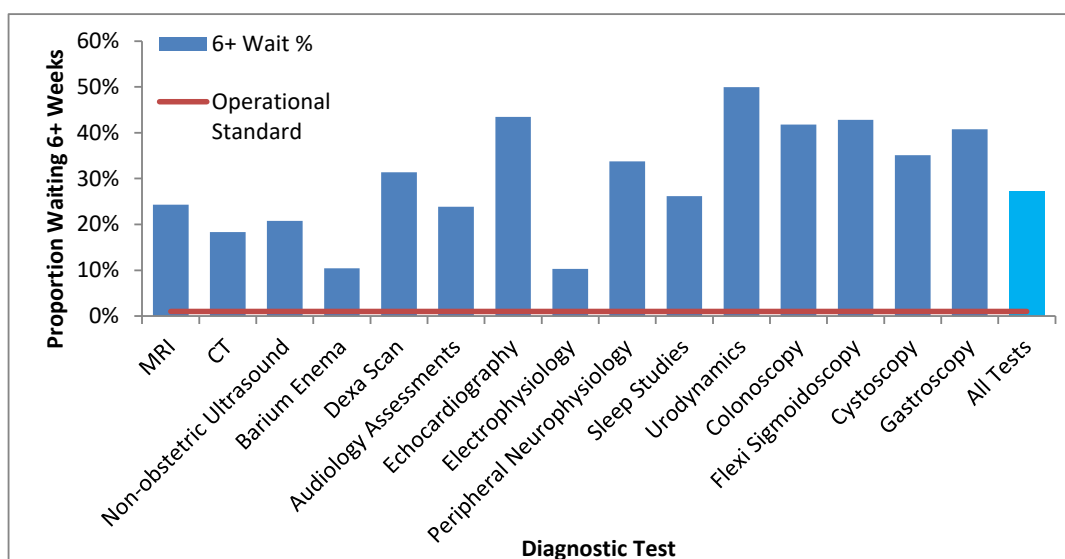
Table 3: Proportion of patients waiting 6+ weeks, by test type – August 2020 and August 2021

	Aug-20	Aug-21	Difference (percentage points)
Imaging	29.4%	21.9%	-7.5
Physiological Measurement	49.1%	37.1%	-11.9
Endoscopy	59.3%	40.8%	-18.5
Total	38.1%	27.1%	-10.9

Note: Figures may differ due to rounding.

- 4.1.5. The operational standard that less than 1% of patients should wait six weeks or more from referral for a diagnostic test was met in none of the 15 key tests this month. The test with the lowest proportion of patients waiting six weeks or more was Electrophysiology (10.3%), whilst the test with the highest proportion was Urodynamics (49.9%) (Chart 6).

Chart 6: Percentage of patients waiting 6+ weeks, by test – August 2021



- 4.1.6. 133 of the 139 acute trusts that submitted data for August 2021 failed to meet the 1% operational standard.
- 4.1.7. All 108 Commissioners¹ failed to meet the 1% operational standard.
- 4.1.8. None of the seven NHS England and NHS Improvement Regional Teams met the 1% operational standard. The proportion of patients waiting six weeks or more for a diagnostic test varied by region between 17.3% (London) and 33.3% (East of England) (Table 4).

¹ Includes NHS England and NHS Improvement

4.1.9. Feedback from NHS trusts has indicated that variations can exist between different regions due to a variety of reasons, from machines breaking down to staff shortages in trusts that usually only affect one region.

Table 4: August 2021 Diagnostic Waiting Times and Activity by Regional Team*

Region	Number of patients waiting six weeks or more at month end	Percentage of patients waiting six weeks or more at month end	Total number of patients waiting at month end	Total activity undertaken in month	Median waiting time
London	34,764	17.3%	201,157	304,450	2.7
South West	41,665	31.6%	131,939	171,654	3.7
South East	33,077	18.7%	176,816	280,755	2.8
Midlands	86,195	31.0%	278,318	327,935	3.8
East of England	55,876	33.3%	167,665	200,490	3.8
North West	54,110	28.5%	189,899	240,946	3.4
North East and Yorkshire	62,948	29.5%	213,122	282,214	3.6
England	369,086	27.1%	1,361,184	1,821,764	3.4

*Includes all independent sector providers and excludes centrally commissioned.

4.2 Total Waiting List

4.2.1. At the end of August 2021 there were a total of 1,361,200 patients still waiting for a diagnostic test. This is an increase of 119,400 (9.6%) from August 2020.

4.2.2. The test with the largest waiting list was Non-obstetric Ultrasound, which accounted for 33.8% of the total waiting list, or 460,500 patients. The test with the smallest waiting list was Electrophysiology, which accounted for 0.03% of the total waiting list, or 400 patients (Table 5).

Table 5: Total number of patients waiting at month end, by test – August 2020 and August 2021

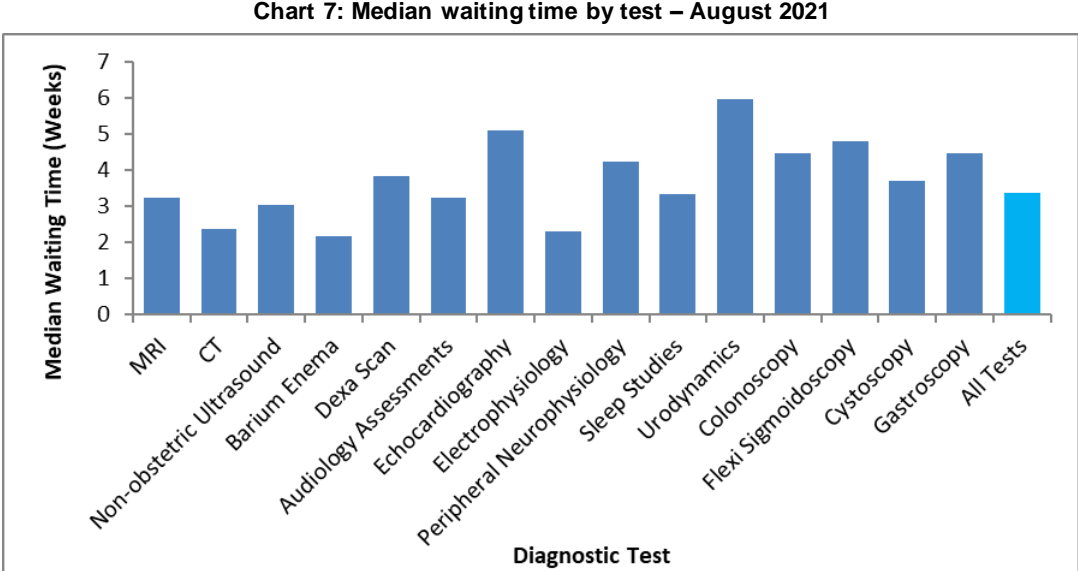
	Aug-20	Aug-21	Growth (%age)
MRI	199,546	265,858	33.2%
CT	148,560	158,358	6.6%
Non-obstetric Ultrasound	405,765	460,465	13.5%
Barium Enema	1,796	1,616	-10.0%
Dexa Scan	52,859	51,168	-3.2%
Audiology Assessments	53,682	60,488	12.7%
Echocardiography	116,718	145,845	25.0%
Electrophysiology	475	359	-24.4%
Peripheral Neurophysiology	27,251	27,680	1.6%
Sleep Studies	11,416	10,626	-6.9%
Urodynamics	7,388	7,821	5.9%
Colonoscopy	73,910	62,546	-15.4%
Flexi Sigmoidoscopy	31,356	22,300	-28.9%
Cystoscopy	23,354	20,050	-14.1%
Gastroscopy	87,677	66,004	-24.7%
All Tests	1,241,753	1,361,184	9.6%

Note: Barium Enema is a test that should be replaced by Colonoscopy or CT Colonography, so the number of tests undertaken should be reducing.

4.2.3. The largest increase in the number of patients waiting by test has been for MRI, where the waiting list grew by 33.2% compared with August 2020.

4.3 Median Waiting Times

4.3.1. At the end of August 2021, the estimated median waiting time for all 15 diagnostic tests was 3.4 weeks from the time of referral, up from 3.1 weeks in the previous month. The test with the shortest median waiting time was Barium enema at 2.2 weeks. The test with the longest median waiting time was Urodynamics at 6.0 weeks (Chart 7).



4.4 Total Activity

4.4.1. In total 1,821,800 of the 15 key diagnostic tests were performed during August 2021. This is an increase of 291,400 (13.4%) from August 2020 (Table 6).

4.4.2. The test with the highest activity was CT with 569,700 tests taking place. This accounted for 31.3% of all activity in August 2021. The test with the lowest activity was Electrophysiology with 800 tests taking place. This accounted for 0.04% of all activity this month.

4.4.3. The number of tests conducted over the last 12 months has increased by 12.3% from the same period last year.

Table 6: Total activity and growth, by test – August 2020 and August 2021

	Aug-21	Aug-20	YTD 21/22	YTD 20/21	Growth Aug 21 vs Aug 20	Growth YTD 21/22 vs YTD 20/21	Adjusted Growth Aug 21 vs Aug 20	Adjusted Growth YTD 21/22 vs YTD 20/21
MRI	299,607	250,464	1,485,590	924,505	19.6%	60.7%	13.9%	60.7%
CT	569,749	506,393	2,890,562	2,132,474	12.5%	35.5%	7.2%	35.5%
Non-obstetric Ultrasound	549,570	468,557	2,950,302	1,735,573	17.3%	70.0%	11.7%	70.0%
Barium Enema	2,915	2,653	15,963	9,955	9.9%	60.4%	4.6%	60.4%
Dexa Scan	35,133	25,469	177,868	61,972	37.9%	187.0%	31.4%	187.0%
Audiology Assessments	74,215	47,044	385,345	136,820	57.8%	181.6%	50.2%	181.6%
Echocardiography	119,489	103,496	641,122	388,586	15.5%	65.0%	10.0%	65.0%
Electrophysiology	774	487	3,627	2,233	58.9%	62.4%	51.4%	62.4%
Peripheral Neurophysiology	17,360	13,243	88,922	37,710	31.1%	135.8%	24.8%	135.8%
Sleep Studies	8,836	6,807	47,321	21,695	29.8%	118.1%	23.6%	118.1%
Urodynamics	4,988	3,593	27,644	10,428	38.8%	165.1%	32.2%	165.1%
Colonoscopy	44,282	32,418	238,422	90,813	36.6%	162.5%	30.1%	162.5%
Flexi Sigmoidoscopy	15,741	13,647	85,524	38,636	15.3%	121.4%	9.9%	121.4%
Cystoscopy	25,551	19,714	134,855	73,130	29.6%	84.4%	23.4%	84.4%
Gastroscopy	53,554	36,381	283,589	103,739	47.2%	173.4%	40.2%	173.4%
All Tests	1,821,764	1,530,366	9,456,656	5,768,269	19.0%	63.9%	13.4%	63.9%

Note: Barium Enema is a test that should be replaced by Colonoscopy or CT Colonography, so the number of tests undertaken should be reducing.

5 Annex

5.1 Methodology

5.1.1. NHS England and NHS Improvement compiles diagnostic waiting time and activity data through a central return. Data collected includes:

- The number of patients waiting at the month end, split by test and week.
- Total activity classified as either Waiting List tests (excluding planned), Planned tests, or Unscheduled tests.

5.1.2. Providers submit data to NHS England and NHS Improvement via SDCS where it is checked and signed off by commissioners. For further details on how the data is collected and the SDCS system, please refer to the [NHSE Collection Guidance](#).

5.2 Data Revisions

5.2.1. Revisions to published figures are released on a six-monthly basis and in accordance with the NHS England's revision policy. For more information on the revision policy please refer to the [SDCS Revisions Policy Document](#). Revisions were last published in August 2021 for the months September 2019 through to December 2020.

5.3 Data Availability

5.3.1. Monthly diagnostic waiting time and activity data is published on a monthly timetable. [A full calendar of all statistical publications can be found here](#).

5.4 Glossary

Clinical Commissioning Group (CCG)

A group of GP practices, which working with other healthcare professionals and in partnership with local communities and local authorities, commission NHS services for patients within their local communities.

Endoscopy

A categorisation of diagnostic tests that include: Colonoscopy; Flexi Sigmoidoscopy; Cystoscopy and Gastroscopy.

Imaging

A categorisation of diagnostic tests that include: Magnetic Resonance Imaging (MRI); Computed Tomography (CT); Non-obstetric Ultrasound; Barium Enema and DEXA Scan.

Median Waiting Time

A measurement of the average time patients have been waiting for a diagnostic test. The median is the middle value when waiting times are put in numerical order. 50% of patients have been waiting less than the median. The median is the preferred measurement of average waiting time as it is less susceptible to extreme values than the mean.

Physiological Measurement

A categorisation of diagnostic tests that include: Audiology Assessments; Echocardiology; Electrophysiology: Peripheral Neurophysiology; Sleep Studies and Urodynamics.

Provider

An organisation that provides NHS treatment or care, for example, an NHS Acute Trust, Mental Health Trust, Community provider, or an Independent Sector organisation.

Region

One of seven geographical areas of NHS England and NHS Improvement responsible for the quality, financial and operational performance of all NHS organisations in their region.

5.5 Feedback Welcomed

We welcome feedback on the content and presentation of statistics within this report and those published on the NHS England website.

If you have any comments on this, or any other issues regarding these statistics, then please email england.nhsdata@nhs.net

Alternatively, we welcome your comments via our user feedback form [here](#).

Feedback about the user's experiences of using these statistics is available [here](#).

5.6 Consultation

Between 8 February 2018 and 5 April 2018, NHS England and NHS Improvement consulted on the future of the Quarterly Diagnostics Census and Monthly Diagnostics Waiting Times and Activity Returns. The outcome document for the consultation was published 30 March 2020 and confirmed the decision to stop collecting the Quarterly Diagnostics Census on a permanent basis and to continue the monthly diagnostics waiting times and activity return (DM01) in its current form. Find out more at: <https://www.engage.england.nhs.uk/consultation/diagnostics-census-waiting-times-activity-return>

5.7 Additional Information

[Full details of diagnostics data for individual organisations are available here.](#)

For press enquiries please contact the NHS England media team on 0113 825 0958 or 0113 825 0959. Email enquiries should be directed to nhsengland.media@nhs.net

The Government Statistical Service (GSS) statistician responsible for producing these data is:

Sheila Dixon Email: england.nhsdata@nhs.net
Performance Analysis Team (Central), NHS England and NHS Improvement
Room 5E15, Quarry House, Quarry Hill, Leeds LS2 7UE