

NHS Diagnostic Waiting Times and Activity Data

NHS England and NHS Improvement



NHS Diagnostic Waiting Times and Activity Data

May 2022 Monthly Report

Version number: 1.0

First published: 14th July 2022

Prepared by: Performance Analysis Team (Elective, Activity & Planning)
NHS England and NHS Improvement

Contents

Contents	3
1 Executive summary	4
1.1 National Statistics	5
2 May 2022 Key Findings.....	6
3 National Trends	7
3.1 6+ Week Waits	7
3.2 Total Waiting List.....	8
3.3 Median Waiting Time	9
3.4 Total Activity	9
4 May 2022 Data	11
4.1 6+ Week Waits	11
4.2 Total Waiting List.....	13
4.3 Median Waiting Times.....	14
4.4 Total Activity	15
5 Annex	17
5.1 Methodology	17
5.2 Data Revisions	17
5.3 Data Availability	17
5.4 Glossary	17
5.5 Feedback Welcomed	18
5.6 Consultation	18
5.7 Additional Information	18

1 Executive summary

This report presents a monthly summary of diagnostic waiting times and activity across the NHS in England. This monthly report is part of a routine series of publications produced by NHS England and NHS Improvement.

The data presented in this report measures the current waiting times of patients still waiting for any of 15 key diagnostic tests or procedures at the month end. This data is split by number of weeks waiting and by test. The waiting times reported are for those patients who have been referred for a test, but whose test had not taken place by the end of the reporting period. Referrals may be from a variety of sources including GPs.

One of the main measurements covered in this report is the number and proportion of patients waiting six weeks or more for a diagnostic test, from time of referral.

This six-week diagnostic wait was initially introduced as a 'milestone' from March 2008 towards achieving the standard Referral to Treatment wait of 18 weeks by December 2008, but diagnostic waiting times now form part of the NHS Constitution. This gives patients the legal right to treatment within 18 weeks of referral (18 week RTT) and as part of this, pledges that patients should not be required to wait six weeks or more for a diagnostic test.

NHS England and NHS Improvement's planning guidance states that there is a threshold of 1% for this pledge. The financial penalty for non-delivery of the standard is set out in the NHS Standard Contract 2020/21.

The 15 key diagnostic tests included in this report are:

Imaging

- Magnetic Resonance Imaging (MRI)
- Computerised Tomography (CT)
- Non-obstetric Ultrasound
- Barium Enema
- Dual-Energy X-Ray Absorptiometry (DEXA) Scan

Physiological Measurements

- Audiology Assessments
- Echocardiography
- Electrophysiology
- Neurophysiology – Peripheral Neurophysiology
- Respiratory Physiology – Sleep Studies
- Urodynamics – Pressures & Flows

Endoscopy

- Gastroscopy
- Colonoscopy
- Flexible Sigmoidoscopy
- Cystoscopy

For detailed descriptions of each diagnostic test please see the [collection guidance documentation](#).

Some of the key terms used throughout this report are outlined below:

- **6+ Waits**
A count of the number of patients waiting six weeks or more for a diagnostic test at month end from referral.
- **Activity**
A count of the number of diagnostic tests undertaken during the month.
- **Diagnostic Test**
A test or procedure of which the primary function is to identify a patient's disease or condition to allow a medical diagnosis to be made.
- **Waiting List**
A count of the number of patients that are waiting for a diagnostic test at the end of the month.

A more comprehensive glossary is available in the Annex.

All England figures quoted are commissioner based. Commissioner based returns reflect data for patients for whom English commissioners are responsible.

1.1 National Statistics

The UK Statistics Authority has designated these statistics as National Statistics, in accordance with the Statistics and Registration Service Act 2007 and signifying compliance with the Code of Practice for Official Statistics.

Designation can be broadly interpreted to mean that the statistics:

- meet identified user needs;
- are well explained and readily accessible;
- are produced according to sound methods; and
- are managed impartially and objectively in the public interest.

Once statistics have been designated as National Statistics it is a statutory requirement that the Code of Practice shall continue to be observed.

2 May 2022 Key Findings

- Diagnostic test activity and waiting times have been impacted by the COVID-19 pandemic, which continues to affect the current reporting period and comparisons with the previous year.
- The total number of patients waiting six weeks or more from referral for one of the 15 key diagnostic tests at the end of May 2022 was 407,400. This was 26.0% of the total number of patients waiting at the end of the month.
- Nationally, the operational standard of less than 1% of patients waiting six weeks or more was not met this month.
- Compared with May 2021 the total number of patients waiting six weeks or more increased by 109,900 while the proportion of patients waiting six weeks or more increased by 3.7 percentage points.
- In the last 12 months, the proportion of patients waiting six weeks or more at the end of a month has varied between 22.4% (June 2021) and 30.0% (January 2022).
- At the end of May 2022, the test with the smallest proportion of patients waiting six weeks or more was Barium Enema with 5.7%. The test with the highest proportion was Urodynamics, with 47.6% of patients waiting six weeks or more.
- An alternative measure of diagnostic waiting times is the average (median) waiting time. The estimated average time that a patient had been waiting for a diagnostic test was 3.0 weeks at the end of May 2022.
- There were 1,566,200 patients waiting for a key diagnostic test at the end of May 2022. This is an increase of 232,200 from May 2021.
- A total of 2,065,800 diagnostic tests were undertaken in May 2022. This is an increase of 176,200 from May 2021.

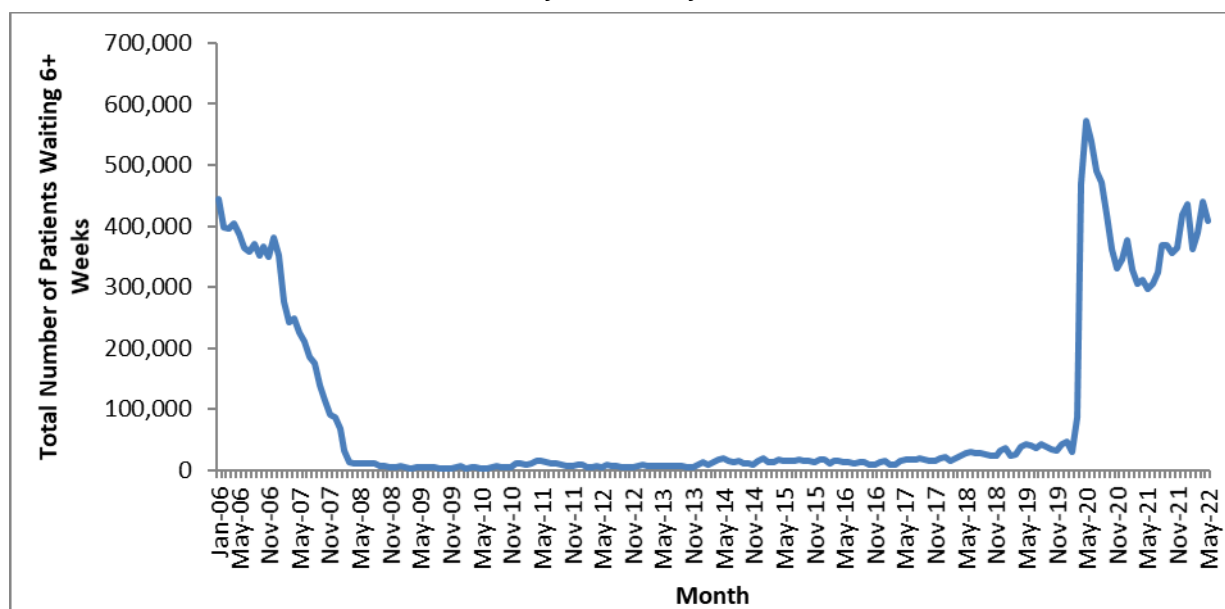
3 National Trends

This section analyses trends in monthly diagnostic waiting times and activity data that has been collected since January 2006.

3.1 6+ Week Waits

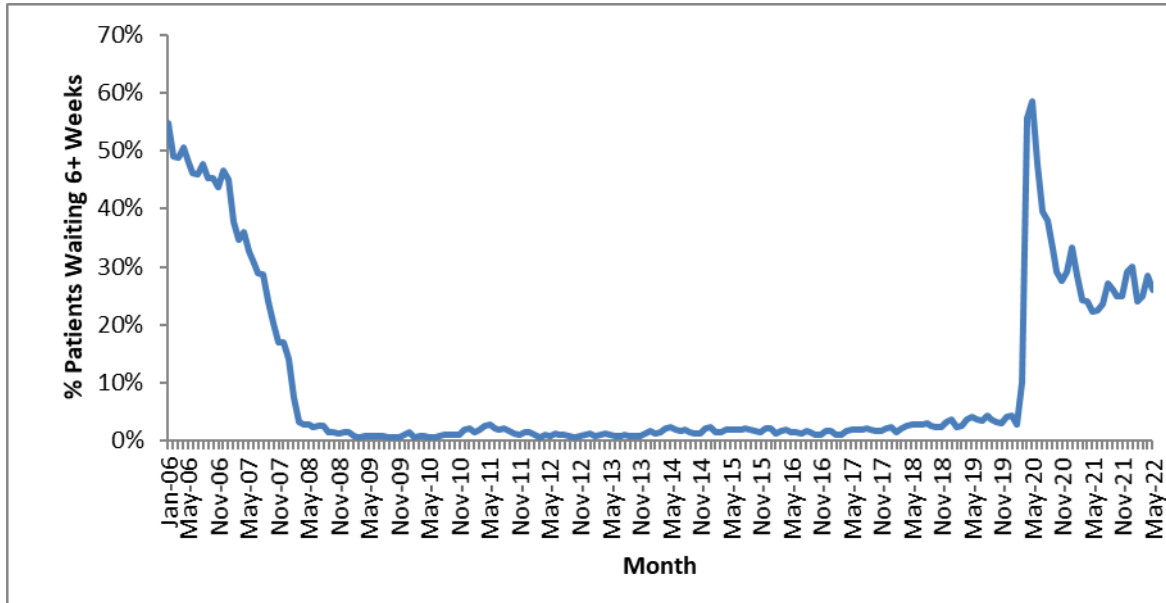
- 3.1.1. The total number of patients waiting six weeks or more dropped sharply between January 2007 and March 2008 (Chart 1), as Trusts worked towards the NHS Improvement Plan (June 2004) milestone that no one should wait six weeks or more for a diagnostic test by March 2008.
- 3.1.2. Since March 2008 there were fluctuations in the total number of patients waiting six weeks or more, with a significant rise between December 2013 and May 2014. The number of patients waiting six weeks or more rose sharply in April 2020 due to the impact of COVID-19. In May 2022 there was an decrease of 31,900 in the number of patients waiting six weeks or more from the previous month.

Chart 1: Total number of patients waiting 6+ weeks at month end for all tests
January 2006 to May 2022



- 3.1.3. The proportion of patients waiting six weeks or more shows a similar drop between January 2007 and the 6-week milestone in March 2008 before stabilising (Chart 2) prior to the COVID-19 period. In the last 12 months, the proportion of patients waiting six weeks or more at the end of a month has varied between 22.4% (June 2021) and 30.0% (January 2022). The 1% operational standard was last met in November 2013.

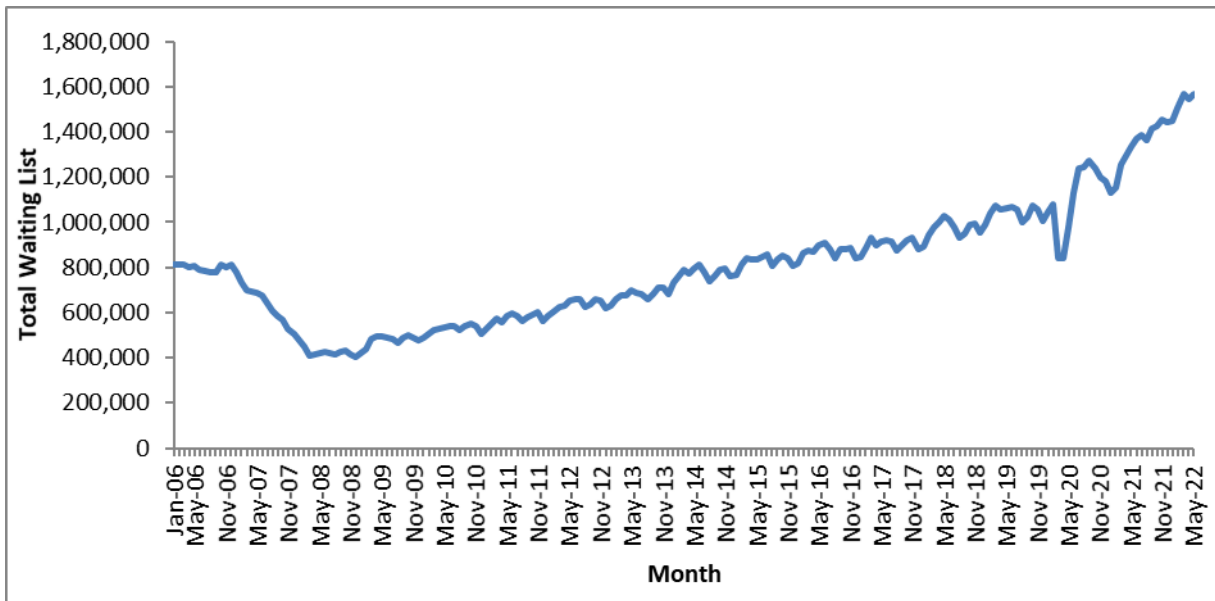
**Chart 2: Percentage of patients waiting 6+ weeks at month end for all tests
January 2006 to May 2022**



3.2 Total Waiting List

3.2.1. As with the number and proportion of patients waiting six weeks or more, the total number of patients waiting at the month end dropped dramatically between January 2007 and the 6-week milestone in March 2008 (Chart 3). Following a period with a stable total waiting list between March 2008 and January 2009, the underlying trend showed a steady increase before dropping sharply in March 2020 and subsequently rising due to the impact of COVID-19.

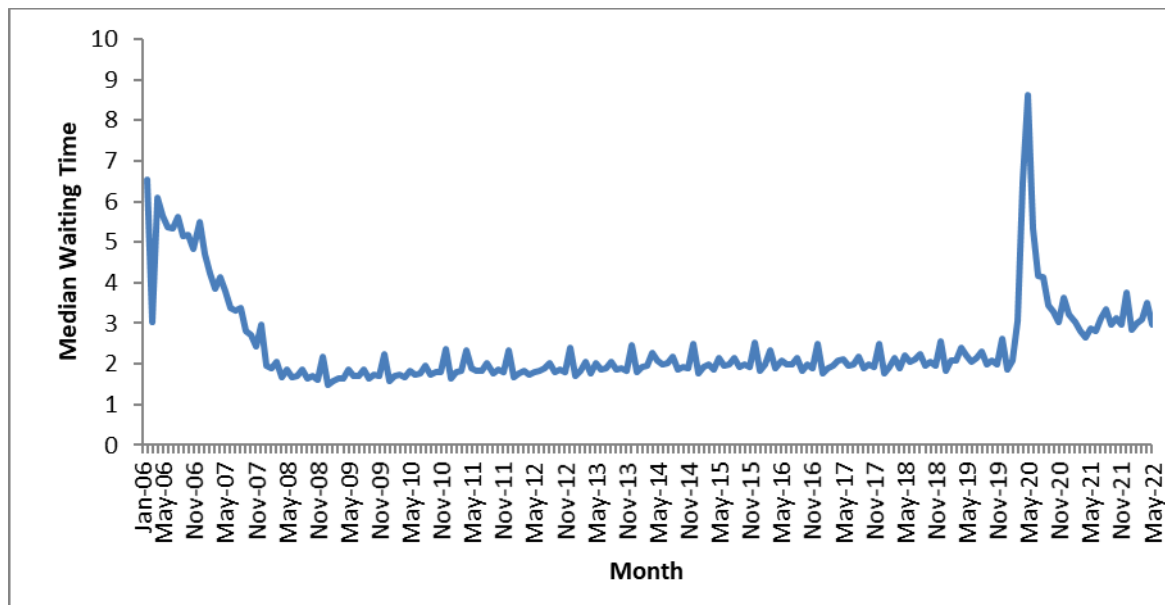
**Chart 3: Total number of patients waiting at month end for all tests
January 2006 to May 2022**



3.3 Median Waiting Time

- 3.3.1. The average (median) waiting time displays a similar trend to the total waiting list and 6 weeks or more waits. After a rapid decrease in the two years leading to the 6-week milestone, the median waiting time remained stable until the COVID-19 period (Chart 4). The data shows significant increases during December every year as a result of the higher number of bank holidays and resulting lower activity. In the last 12 months, the median waiting time had a high of 3.8 weeks (December 2021) and a low of 2.8 weeks (June 2021). The median waiting time in May 2022 was 3.0 weeks.

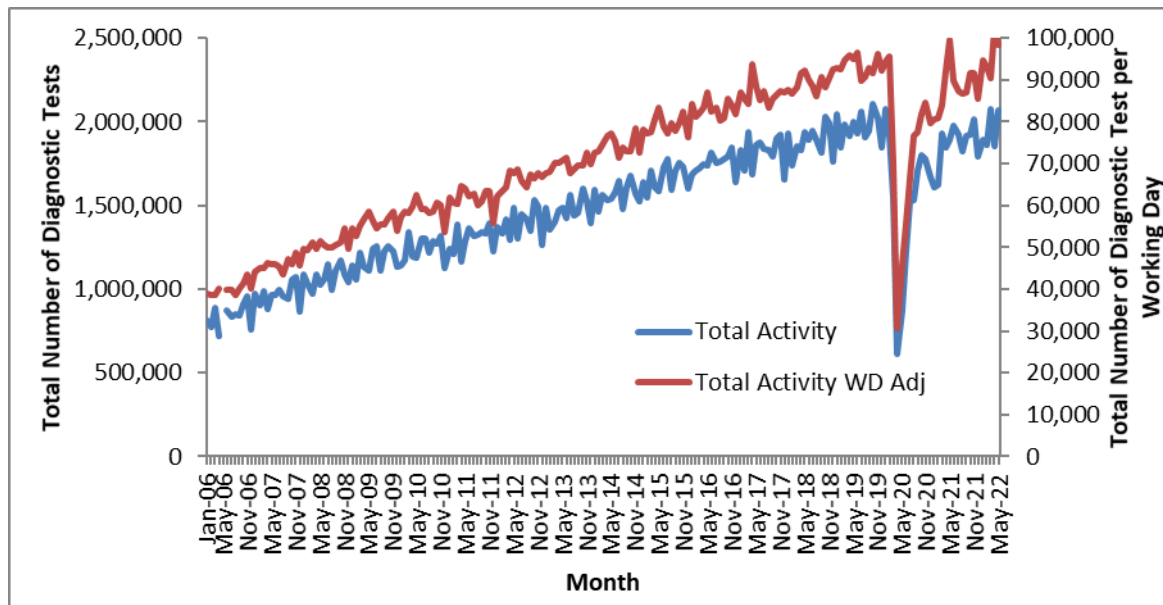
Chart 4: Median waiting time for all tests – January 2006 to May 2022



3.4 Total Activity

- 3.4.1. The monthly activity figure can fluctuate significantly month to month, with particularly notable decreases in December due to the bank holidays. However, the underlying trend has shown an increase since January 2006 until the COVID-19 period. If the data is adjusted to show activity per working day, the monthly variation becomes less pronounced (Chart 5).
- 3.4.2. Monthly activity decreased markedly following the start of the COVID-19 pandemic. Total activity in April 2020 fell by 68% compared to April 2019 but subsequently started to recover with some further set-backs.

**Chart 5: Total activity and working day adjusted activity per month for all tests
January 2006 to May 2022**



Note: Activity data was not collected in May 2006 and all activity time series graphs will show missing values for that month

3.4.3. In the previous 12 months, individual tests have shown differing changes in activity. The test with the largest decrease in activity was Barium Enema where May 2022 activity was 0.1% lower per month than May 2021 (Table 1).

Table 1: Total activity, by test – May 2021 and May 2022

	May-21	May-22	Average monthly growth
MRI	295,746	327,594	0.9%
CT	579,968	620,852	0.6%
Non-obstetric Ultrasound	590,341	645,568	0.7%
Barium Enema	3,105	3,078	-0.1%
Dexa Scan	33,477	42,022	1.9%
Audiology Assessments	74,755	88,800	1.4%
Echocardiography	127,231	140,394	0.8%
Electrophysiology	752	907	1.6%
Peripheral Neurophysiology	16,995	19,652	1.2%
Sleep Studies	9,176	11,528	1.9%
Urodynamics	5,664	5,627	-0.1%
Colonoscopy	49,780	51,510	0.3%
Flexi Sigmoidoscopy	17,769	18,012	0.1%
Cystoscopy	26,387	29,485	0.9%
Gastroscopy	58,421	60,761	0.3%
All Tests	1,889,567	2,065,790	0.7%

4 May 2022 Data

This section analyses the May 2022 diagnostic waiting times and activity data and includes comparisons between tests, regions, providers and commissioners.

6+ week waits performance became significantly worse from March to May 2020 due to the impact of the COVID-19 crisis but started to improve from June 2020.

4.1 6+ Week Waits

- 4.1.1. At the end of May 2022, there were a total of 407,400 patients waiting six weeks or more from referral for one of the 15 key diagnostic tests. This was 26.0% of the total number of patients waiting at the end of the month.
- 4.1.2. Compared with May 2021, the number of patients waiting six weeks or more increased by 109,900, while the proportion of patients waiting six weeks or more increased by 3.7 percentage points.
- 4.1.3. Compared with May 2021, the test with the largest increase in the proportion of patients waiting six weeks or more was Electrophysiology, which increased by 31.8 percentage points. The test with the largest decrease was Peripheral Neurophysiology, which decreased by 11.9 percentage points (Table 2).

Table 2: Proportion of patients waiting 6+ weeks, by test – May 2021 and May 2022

	May-21	May-22	Difference (%age points)
MRI	16.9%	22.7%	5.9
CT	14.7%	18.7%	4.0
Non-obstetric Ultrasound	14.9%	20.6%	5.6
Barium Enema	7.3%	5.7%	-1.6
Dexa Scan	29.6%	30.1%	0.4
Audiology Assessments	20.5%	28.1%	7.6
Echocardiography	34.7%	43.2%	8.6
Electrophysiology	7.5%	39.2%	31.8
Peripheral Neurophysiology	31.8%	19.8%	-11.9
Sleep Studies	16.6%	32.5%	15.9
Urodynamics	48.0%	47.6%	-0.5
Colonoscopy	41.1%	35.9%	-5.2
Flexi Sigmoidoscopy	42.0%	37.1%	-5.0
Cystoscopy	38.1%	34.0%	-4.2
Gastroscopy	41.4%	35.2%	-6.2
All Tests	22.3%	26.0%	3.7

Note: Figures may differ due to rounding.

4.1.4. Compared with May 2021, the test type with the smallest change in the proportion of patients waiting six weeks or more was Imaging with an increase of 5.1 percentage points. Physiological Measurement increased by 6.0 percentage points, while Endoscopy decreased by 5.4 percentage points (Table 3). See section 5.4 for which tests are included under the different test types.

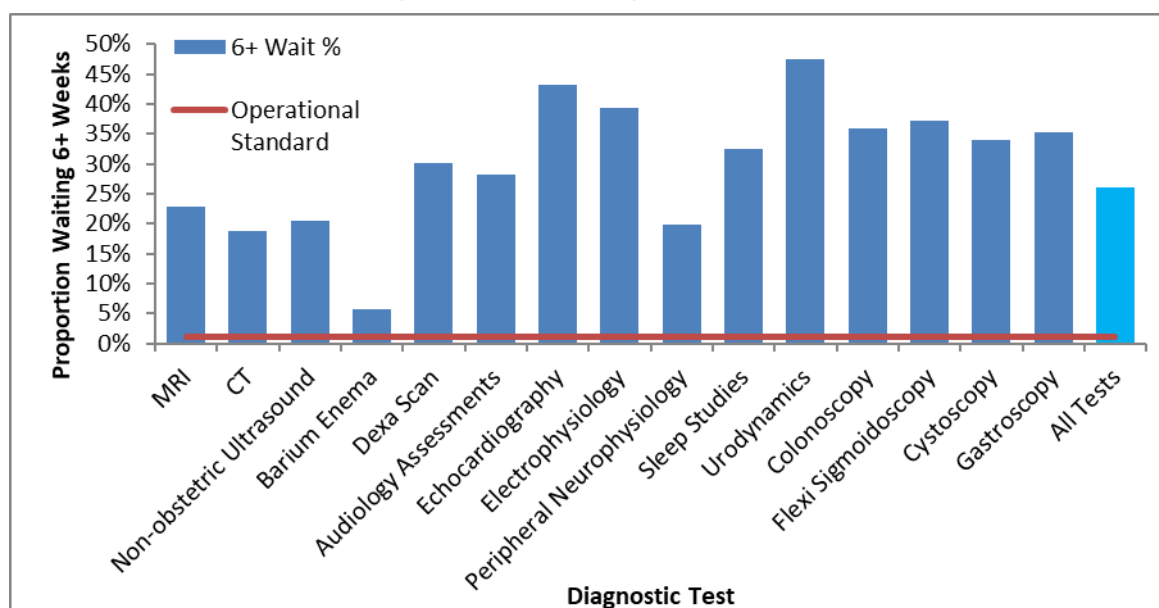
Table 3: Proportion of patients waiting 6+ weeks, by test type – May 2021 and May 2022

	May-21	May-22	Difference (%age points)
Imaging	16.3%	21.3%	5.1
Physiological Measurement	30.8%	36.8%	6.0
Endoscopy	41.0%	35.5%	-5.4
Total	22.3%	26.0%	3.7

Note: Figures may differ due to rounding.

4.1.5. The operational standard that less than 1% of patients should wait six weeks or more from referral for a diagnostic test was met in none of the 15 key tests this month. The test with the lowest proportion of patients waiting six weeks or more was Barium Enema (5.7%), whilst the test with the highest proportion was Urodynamics (47.6%) (Chart 6).

Chart 6: Percentage of patients waiting 6+ weeks, by test – May 2022



4.1.6. 132 of the 138 acute trusts that submitted data for May 2022 failed to meet the 1% operational standard.

4.1.7. All 107 Commissioners¹ failed to meet the 1% operational standard.

¹ Includes NHS England and NHS Improvement

- 4.1.8. None of the seven NHS England and NHS Improvement Regional Teams met the 1% operational standard. The proportion of patients waiting six weeks or more for a diagnostic test varied by region between 12.8% (London) and 34.7% (Midlands) (Table 4).
- 4.1.9. Feedback from NHS trusts has indicated that variations can exist between different regions due to a variety of reasons, from machines breaking down to staff shortages in trusts that usually only affect one region.

Table 4: May 2022 Diagnostic Waiting Times and Activity by Regional Team*

Region	Number of patients waiting six weeks or more at month end	Percentage of patients waiting six weeks or more at month end	Total number of patients waiting at month end	Total activity undertaken in month	Median waiting time
London	27,812	12.8%	216,592	341,923	2.3
South West	51,892	33.6%	154,595	195,948	3.6
South East	43,441	20.3%	214,311	307,524	2.6
Midlands	120,763	34.7%	347,764	362,172	3.7
East of England	61,196	30.9%	198,234	231,013	3.3
North West	47,078	24.0%	196,271	290,447	2.8
North East and Yorkshire	54,172	23.1%	234,605	323,322	2.9
England	407,377	26.0%	1,566,168	2,065,790	3.0

*Includes all independent sector providers and excludes centrally commissioned.

4.2 Total Waiting List

- 4.2.1. At the end of May 2022 there were a total of 1,566,200 patients still waiting for a diagnostic test. This is an increase of 232,200 (17.4%) from May 2021.
- 4.2.2. The test with the largest waiting list was Non-obstetric Ultrasound, which accounted for 34.6% of the total waiting list, or 542,100 patients. The test with the smallest waiting list was Electrophysiology, which accounted for 0.06% of the total waiting list, or 900 patients (Table 5).

Table 5: Total number of patients waiting at month end, by test – May 2021 and May 2022

	May-21	May-22	Growth (%age)
MRI	255,641	289,888	13.4%
CT	158,008	182,869	15.7%
Non-obstetric Ultrasound	441,219	542,118	22.9%
Barium Enema	1,757	1,853	5.5%
Dexa Scan	52,116	59,761	14.7%
Audiology Assessments	53,844	78,637	46.0%
Echocardiography	137,174	172,333	25.6%
Electrophysiology	748	930	24.3%
Peripheral Neurophysiology	30,364	25,978	-14.4%
Sleep Studies	9,719	16,921	74.1%
Urodynamics	8,055	7,912	-1.8%
Colonoscopy	63,855	69,992	9.6%
Flexi Sigmoidoscopy	25,406	24,245	-4.6%
Cystoscopy	22,064	23,178	5.0%
Gastroscopy	73,951	69,553	-5.9%
All Tests	1,333,921	1,566,168	17.4%

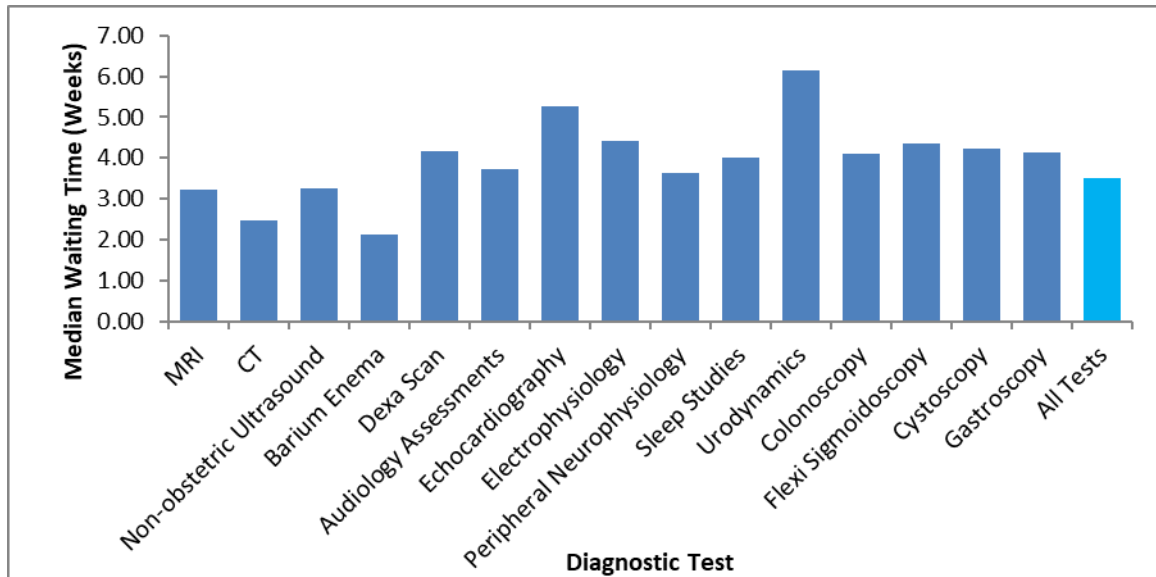
Note: Barium Enema is a test that should be replaced by Colonoscopy or CT Colonography, so the number of tests undertaken should be reducing.

4.2.3. The largest increase in the number of patients waiting by test has been for Sleep Studies where the waiting list grew by 74.1% compared with May 2021.

4.3 Median Waiting Times

4.3.1. At the end of May 2022, the estimated median waiting time for all 15 diagnostic tests was 3.0 weeks from the time of referral, down from 3.5 weeks in the previous month. The test with the shortest median waiting time was Barium Enema at 2.1 weeks. The test with the longest median waiting time was Urodynamics at 6.1 weeks (Chart 7).

Chart 7: Median waiting time by test – May 2022



4.4 Total Activity

- 4.4.1. In total 2,065,800 of the 15 key diagnostic tests were performed during May 2022. This is an increase of 176,200 (9.3%) from May 2021 (Table 6).
- 4.4.2. The test with the highest activity was Non-obstetric Ultrasound with 645,600 tests taking place. This accounted for 31.3% of all activity in May 2022. The test with the lowest activity was Electrophysiology with 900 tests taking place. This accounted for 0.04% of all activity this month.
- 4.4.3. The number of tests conducted over the last 12 months has increased by 4.8% from the same period last year.

Table 6: Total activity and growth, by test – May 2021 and May 2022

Note: Barium Enema is a test that should be replaced by Colonoscopy or CT Colonography, so the number of tests undertaken should be reducing.

	May-22	May-21	YTD 22/23	YTD 21/22	Growth May 22 vs May 21	Growth YTD 22/23 vs YTD 21/22	Adjusted Growth May 22 vs May 21	Adjusted Growth YTD 22/23 vs YTD 21/22
MRI	327,594	295,746	633,521	578,837	10.8%	9.4%	0.2%	9.4%
CT	620,852	579,968	1,197,452	1,141,721	7.0%	4.9%	-3.1%	4.9%
Non-obstetric Ultrasound	645,568	590,341	1,205,270	1,179,898	9.4%	2.2%	-1.1%	2.2%
Barium Enema	3,078	3,105	5,659	5,821	-0.9%	-2.8%	-10.3%	-2.8%
Dexa Scan	42,022	33,477	77,095	67,113	25.5%	14.9%	13.6%	14.9%
Audiology Assessments	88,800	74,755	167,484	147,654	18.8%	13.4%	7.5%	13.4%
Echocardiography	140,394	127,231	264,038	254,117	10.3%	3.9%	-0.2%	3.9%
Electrophysiology	907	752	1,744	1,492	20.6%	16.9%	9.1%	16.9%
Peripheral Neurophysiology	19,652	16,995	36,655	33,292	15.6%	10.1%	4.6%	10.1%
Sleep Studies	11,528	9,176	20,725	18,623	25.6%	11.3%	13.7%	11.3%
Urodynamics	5,627	5,664	10,338	11,282	-0.7%	-8.4%	-10.1%	-8.4%
Colonoscopy	51,510	49,780	95,213	96,006	3.5%	-0.8%	-6.4%	-0.8%
Flexi Sigmoidoscopy	18,012	17,769	33,272	34,912	1.4%	-4.7%	-8.3%	-4.7%
Cystoscopy	29,485	26,387	53,705	52,344	11.7%	2.6%	1.1%	2.6%
Gastroscopy	60,761	58,421	114,508	113,969	4.0%	0.5%	-5.9%	0.5%
All Tests	2,065,790	1,889,567	3,916,679	3,737,081	9.3%	4.8%	-1.1%	4.8%

5 Annex

5.1 Methodology

5.1.1. NHS England and NHS Improvement compiles diagnostic waiting time and activity data through a central return. Data collected includes:

- The number of patients waiting at the month end, split by test and week.
- Total activity classified as either Waiting List tests (excluding planned), Planned tests, or Unscheduled tests.

5.1.2. Providers submit data to NHS England and NHS Improvement via SDCS where it is checked and signed off by commissioners. For further details on how the data is collected and the SDCS system, please refer to the [NHSE Collection Guidance](#).

5.2 Data Revisions

5.2.1. Revisions to published figures are released on a six-monthly basis and in accordance with the NHS England's revision policy. For more information on the revision policy please refer to the [SDCS Revisions Policy Document](#). Revisions were last published in April 2022 for the months September 2019 through to April 2021.

5.3 Data Availability

5.3.1. Monthly diagnostic waiting time and activity data is published on a monthly timetable. [A full calendar of all statistical publications can be found here.](#)

5.4 Glossary

Clinical Commissioning Group (CCG)

A group of GP practices, which working with other healthcare professionals and in partnership with local communities and local authorities, commission NHS services for patients within their local communities.

Endoscopy

A categorisation of diagnostic tests that include: Colonoscopy; Flexi Sigmoidoscopy; Cystoscopy and Gastroscopy.

Imaging

A categorisation of diagnostic tests that include: Magnetic Resonance Imaging (MRI); Computed Tomography (CT); Non-obstetric Ultrasound; Barium Enema and DEXA Scan.

Median Waiting Time

A measurement of the average time patients have been waiting for a diagnostic test. The median is the middle value when waiting times are put in numerical order. 50% of patients have been waiting less than the median. The median is the preferred measurement of average waiting time as it is less susceptible to extreme values than the mean.

Physiological Measurement

A categorisation of diagnostic tests that include: Audiology Assessments; Echocardiology; Electrophysiology: Peripheral Neurophysiology; Sleep Studies and Urodynamics.

Provider

An organisation that provides NHS treatment or care, for example, an NHS Acute Trust, Mental Health Trust, Community provider, or an Independent Sector organisation.

Region

One of seven geographical areas of NHS England and NHS Improvement responsible for the quality, financial and operational performance of all NHS organisations in their region.

5.5 Feedback Welcomed

We welcome feedback on the content and presentation of statistics within this report and those published on the NHS England website.

If you have any comments on this, or any other issues regarding these statistics, then please email england.nhsdata@nhs.net

Alternatively, we welcome your comments via our user feedback form [here](#).

Feedback about the user's experiences of using these statistics is available [here](#).

5.6 Consultation

Between 8 February 2018 and 5 April 2018, NHS England and NHS Improvement consulted on the future of the Quarterly Diagnostics Census and Monthly Diagnostics Waiting Times and Activity Returns. The outcome document for the consultation was published 30 March 2020 and confirmed the decision to stop collecting the Quarterly Diagnostics Census on a permanent basis and to continue the monthly diagnostics waiting times and activity return (DM01) in its current form. Find out more at: <https://www.engage.england.nhs.uk/consultation/diagnostics-census-waiting-times-activity-return>

5.7 Additional Information

[Full details of diagnostics data for individual organisations are available here.](#)

For press enquiries please contact the NHS England media team on 0113 825 0958 or 0113 825 0959. Email enquiries should be directed to nhsengland.media@nhs.net

The Government Statistical Service (GSS) statistician responsible for producing these data is:

Sheila Dixon Email: england.nhsdata@nhs.net
Performance Analysis Team (Central), NHS England and NHS Improvement
Room 5E15, Quarry House, Quarry Hill, Leeds LS2 7UE