



Thursday 14 March 2024

Statistical Press Notice **NHS referral to treatment (RTT) waiting times data** **January 2024**

NHS England released statistics today on referral to treatment (RTT) waiting times for consultant-led elective care. The statistics include patients waiting to start treatment at the end of January 2024 and patients who were treated during January 2024.

These statistics relate to referral to treatment (RTT) pathways. Some patients are waiting on more than one pathway.

Missing data for January 2024

All acute trusts submitted data for January 2024.

Main findings

- The number of RTT pathways where a patient was waiting to start treatment at the end of January 2024 was 7.6 million. Some patients are on multiple pathways. The number of unique patients is estimated to be around 6.3 million¹.
- Among the 7.6 million, in 321,394 cases the patient was waiting more than 52 weeks, in 92,213 cases they were waiting more than 65 weeks, in 14,013 cases they were waiting more than 78 weeks, and in 376 cases they were waiting more than 104 weeks. In 57.0% of cases the patient had been waiting up to 18 weeks, thus not meeting the 92% standard.
- During January 2024, 1,808,101 new RTT pathways were started (new RTT period or clock starts).
- During January 2024, 308,566 pathways were completed as a result of admitted treatment and 1,261,985 were completed in other ways (non-admitted).
- For those pathways where the patient was waiting to start treatment at the end of January 2024, the median waiting time was 15.0 weeks. The 92nd percentile waiting time was 45.3 weeks².

¹ This is based on analysis of the Waiting List Minimum Data Set (WLMDs), which showed that the ratio of unique NHS numbers to pathways on 4th February 2024 was 83:100. The WLMDs extract was taken on 7th March 2024, which includes data up to 25th February 2024.

² The median and 92nd percentile figures do not contain estimates for missing trusts (where relevant).

Further information

Detailed tables of incomplete and completed pathway waiting times by treatment function (specialty), commissioner and provider are available at:

<http://www.england.nhs.uk/statistics/rtt-waiting-times/>

The commissioner data files include aggregations of waiting times by sub-ICB, ICB, region and England as a whole.

For April 2021 data onwards, the reporting requirements for the monthly RTT data return were updated – see section 4 of ‘Notes for editors’ for a summary of the changes and further details are available at [DCB0095: Consultant-led referral to treatment \(RTT\) waiting times - NHS Digital](#)).

Guidance relating to the recording and reporting of RTT data can also be found at <http://www.england.nhs.uk/statistics/rtt-waiting-times/rtt-guidance/>.

The Recording and Reporting guidance document was updated on 2 February 2024 to reflect changes to the reporting requirements of community services pathways in RTT datasets (the new guidance can be found in section 7). The updated guidance states that some community pathways should, from February 2024, no longer be reported in RTT datasets and should instead be captured in community health services data collections. Management information indicates that the impact on the overall RTT waiting list may be a decrease of approximately 43,000 pathways

(<https://www.england.nhs.uk/statistics/wp-content/uploads/sites/2/2024/02/Incomplete-pathways-Community-Services-1.xlsx>) from within the community paediatric specialty.

There may also be an impact on other community activity-related pathways, however, this is expected to be more limited. Next month’s statistical press notice will include an assessment of the estimated impact of the guidance change on the February 2024 data.

National trends

- Among the 7.6 million pathways where the patient was waiting to start treatment at the end of January 2024, 57.0% were waiting up to 18 weeks (chart 1).
- The number of RTT clock starts per working day in January 2024 was 100.3% of the level in the same month in the pre-Covid baseline comparison period (12 months to February 2020). There was no change in the total number of completed RTT pathways per working day in the 12 months to January 2024 compared to the 12 months to February 2020 (prior to Covid) (chart 2).
- The number of completed admitted and non-admitted RTT pathways per working day in January 2024 was 98.4% and 104.6% of the level in the same month in the pre-Covid baseline comparison period (12 months to February 2020). The total number of completed RTT pathways per working day was up by 2.0% in the 12 months to January 2024 compared to the 12 months to February 2020 (prior to Covid) (charts 3 and 4).
- The number of pathways where the patient was waiting to start treatment at the end of January 2024 (incomplete pathways) was 65.6% higher than at the end of February 2020 (prior to Covid) (chart 5).

Chart 1: % of incomplete pathways within 18 weeks, including estimates for missing acute trusts

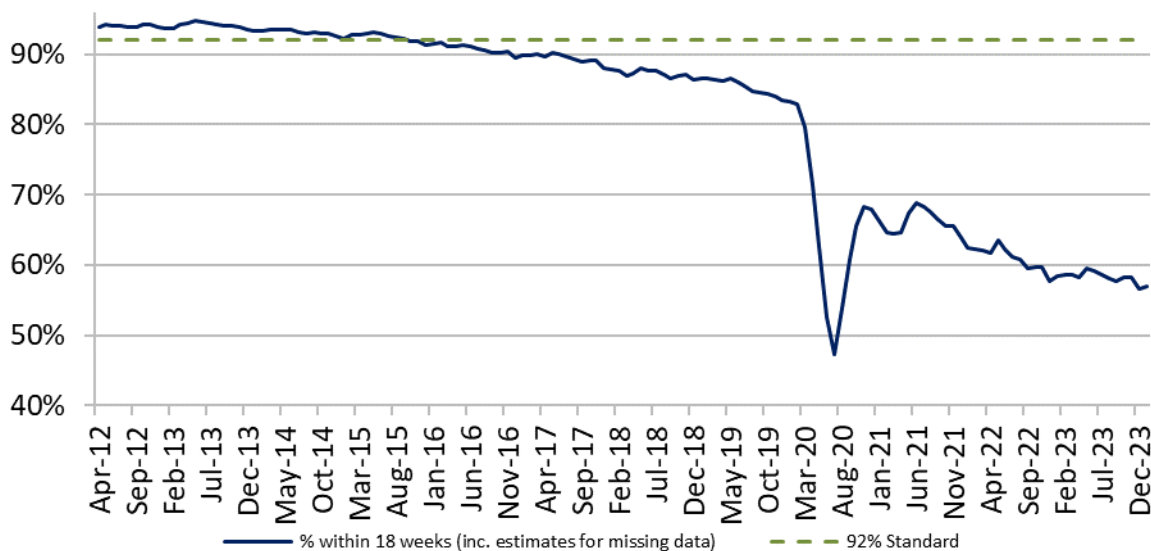


Chart 2: Number of new RTT clock starts per working day, including estimates for missing acute trusts

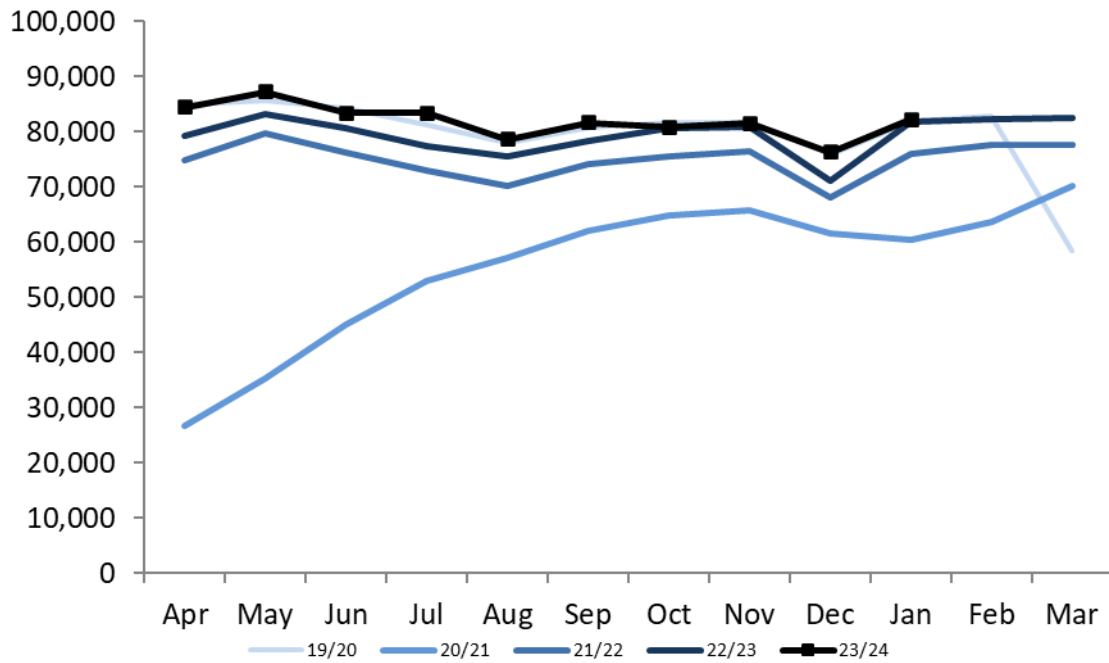


Chart 3: Number of completed admitted RTT pathways per working day, including estimates for missing acute trusts

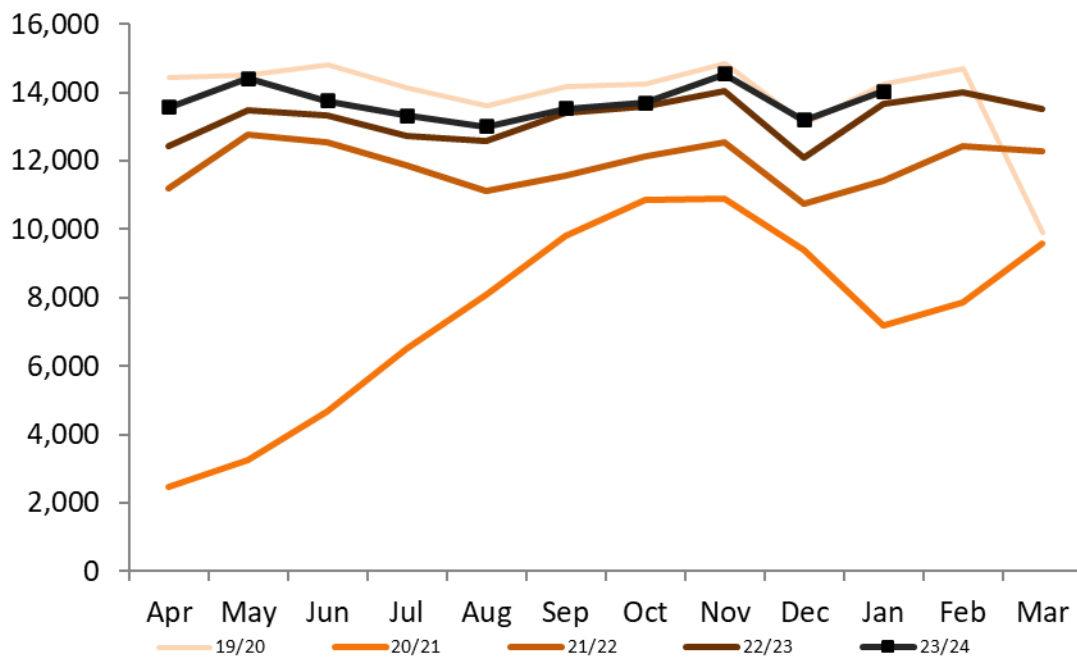


Chart 4: Number of completed non-admitted RTT pathways per working day, including estimates for missing acute trusts

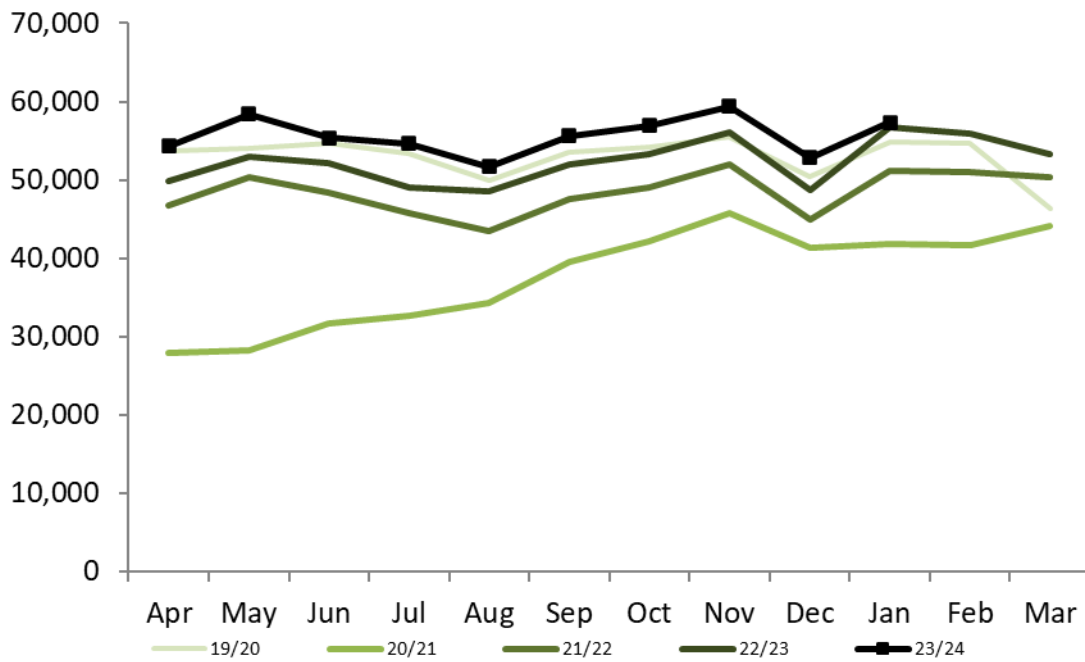


Chart 5: Total incomplete RTT pathways

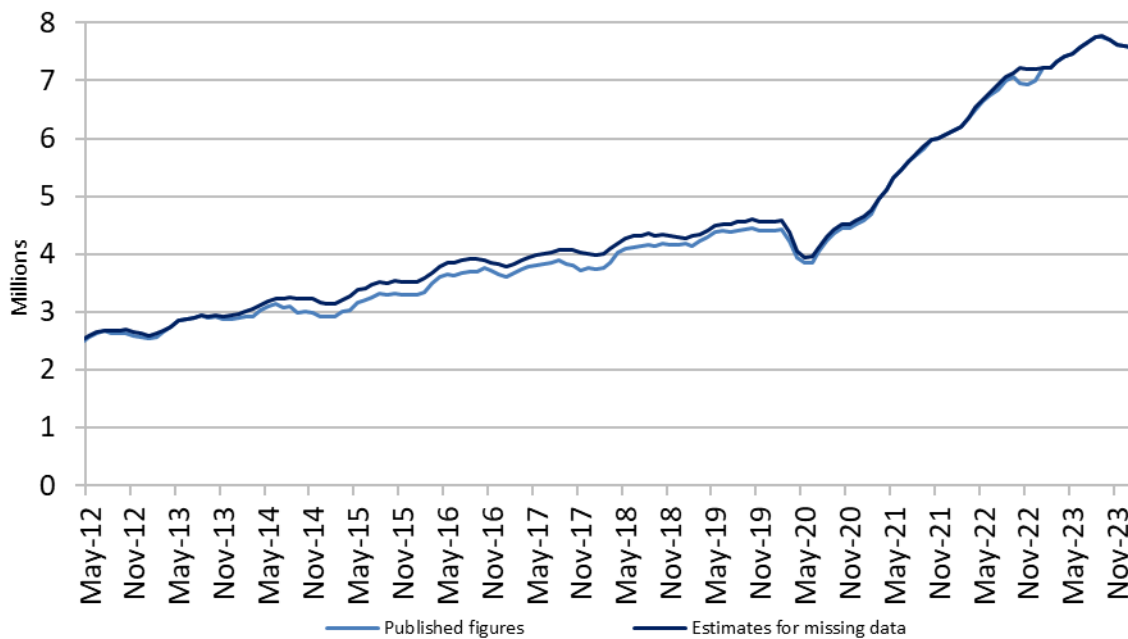


Table 1 – RTT pathways by treatment function not including estimates for missing acute trusts, January 2024, England

Treatment function	Incomplete pathways		Completed pathways	
	Total	% within 18 weeks	Admitted Total (all)	Non-admitted Total (all)
General Surgery Service	424,169	55.0%	25,767	59,262
Urology Service	413,969	57.2%	19,999	54,938
Trauma and Orthopaedic Service	849,406	54.5%	46,476	111,771
Ear Nose and Throat Service	621,169	48.3%	12,800	84,304
Ophthalmology Service	605,516	63.5%	64,665	109,565
Oral Surgery Service	323,723	49.5%	13,835	39,958
Neurosurgical Service	61,364	53.8%	2,411	8,683
Plastic Surgery Service	107,761	51.5%	12,550	11,356
Cardiothoracic Surgery Service	9,611	64.5%	1,596	1,247
General Internal Medicine Service	40,831	66.1%	884	8,502
Gastroenterology Service	384,402	59.2%	17,640	49,109
Cardiology Service	398,450	59.9%	9,069	58,020
Dermatology Service	408,571	57.3%	11,066	99,297
Respiratory Medicine Service	221,959	61.1%	1,875	39,508
Neurology Service	234,198	53.5%	807	33,093
Rheumatology Service	124,542	63.6%	1,520	29,193
Elderly Medicine Service	25,343	77.4%	326	8,181
Gynaecology Service	591,081	52.4%	15,230	94,599
Other - Medical Services	632,670	63.8%	14,580	134,654
Other - Mental Health Services	12,424	68.0%	164	6,010
Other - Paediatric Services	412,394	56.5%	9,515	68,647
Other - Surgical Services	493,185	57.2%	22,031	102,893
Other - Other Services	179,176	69.7%	3,760	49,195
Total	7,575,914	57.0%	308,566	1,261,985

Table 2 – RTT waiting times time series not including estimates for missing acute trusts, England

Incomplete pathways			
Month	Median wait (weeks)	92 nd percentile (weeks)	% within 18 weeks
Aug-07	14.3	52.4	57.2%
Mar-08	9.8	51.6	66.0%
Mar-09	5.6	23.3	87.6%
Mar-10	5.2	18.9	91.1%
Mar-11	5.5	20.7	89.4%
Mar-12	5.2	17.0	93.3%
Mar-13	5.5	16.6	94.2%
Mar-14	5.5	16.9	93.7%
Mar-15	5.6	17.2	93.1%
Mar-16	6.4	18.5	91.5%
Mar-17	6.2	19.5	90.3%
Mar-18	6.9	21.9	87.2%
Mar-19	6.9	22.3	86.7%
Mar-20	8.9	26.5	79.7%
Mar-21	11.6	52+	64.4%
Mar-22	12.2	44.4	62.2%
Apr-22	12.6	45.0	61.7%
May-22	12.7	45.3	63.5%
Jun-22	13.3	45.7	62.2%
Jul-22	13.3	45.9	61.0%
Aug-22	13.8	46.4	60.8%
Sep-22	14.0	46.8	59.4%
Oct-22	13.9	46.5	60.2%
Nov-22	13.6	45.3	60.1%
Dec-22	14.4	46.3	58.0%
Jan-23	14.6	46.5	58.3%
Feb-23	14.5	46.1	58.5%
Mar-23	14.1	45.5	58.6%
Apr-23	13.8	46.0	58.3%
May-23	14.1	46.4	59.5%
Jun-23	14.3	46.2	59.2%
Jul-23	14.1	45.9	58.6%
Aug-23	14.5	46.3	58.0%
Sep-23	14.7	46.4	57.6%
Oct-23	14.6	45.8	58.2%
Nov-23	14.4	44.3	58.3%
Dec-23	15.0	45.2	56.6%
Jan-24	15.0	45.3	57.0%

Notes:

1. Median and 92nd percentile times are calculated from aggregate data, rather than patient level data, and therefore are only estimates of the position on average waits.
2. For Oct-22 data onwards, the calculation used to estimate the median has changed to be in-line with that used to estimate the percentile times.
3. A more detailed time series table is available at: <http://www.england.nhs.uk/statistics/rtt-waiting-times/>

Notes to editors

1. Referral to Treatment (RTT) pathways

Patients referred for non-emergency consultant-led treatment are on RTT pathways. An RTT pathway is the length of time that a patient waited from referral to start of treatment, or, if they have not yet started treatment, the length of time that a patient has waited so far.

The following activities end the RTT pathway:

- First treatment – the start of the first treatment that is intended to manage a patient's disease, condition, or injury in a RTT pathway.
- Start of active monitoring initiated by the patient.
- Start of active monitoring initiated by the care professional.
- Decision not to treat – decision not to treat made or no further contact required.
- Patient declined offered treatment.
- Patient died before treatment.

Admitted pathways are the waiting times for patients whose treatment started during the reporting period and involved admission to hospital. These are sometimes referred to as inpatient waiting times. They include the complete time waited from referral until start of inpatient treatment.

Non-admitted pathways are the waiting times for patients whose wait ended during the reporting period for reasons other than an inpatient or day case admission to hospital for treatment. These are sometimes referred to as outpatient waiting times. They include the time waited for patients whose RTT waiting time clock either stopped for treatment or other reasons, such as a patient declining treatment.

Incomplete pathways are the waiting times for patients waiting to start treatment at the end of the reporting period. These patients will be at various stages of their pathway, for example, waiting for diagnostics, an appointment with a consultant, or for admission for a procedure. These are sometimes referred to as waiting list waiting times and the volume of incomplete RTT pathways as the size of the RTT waiting list.

Each pathway relates to an individual referral rather than an individual patient so if a patient was waiting for multiple treatments, they may be included in the figures more than once.

The Department of Health published the RTT Rules Suite on 28 November 2007. This document was updated in October 2022 and can be found at:

<https://www.gov.uk/government/publications/right-to-start-consultant-led-treatment-within-18-weeks>

Other guidance documents relating to RTT waiting times can be found at:

<http://www.england.nhs.uk/statistics/rtt-waiting-times/rtt-guidance/>.

2. RTT waiting time rights and pledges

The NHS Constitution states that patients have the right to start non-emergency consultant-led treatment within 18 weeks of referral, unless they choose to wait longer or it is clinically appropriate that they wait longer, and for the NHS to take all reasonable steps to offer them a range of alternative providers if this is not possible.

3. RTT waiting times standards

The NHS Constitution standard sets out that more than 92% of patients on incomplete pathways should have been waiting no more than 18 weeks from referral.

The standard leaves an operational tolerance to allow for patients for whom starting treatment within 18 weeks would be inconvenient or clinically inappropriate. These circumstances can be categorised as:

- Patient choice – patients who choose to delay treatments for personal or social reasons
- Co-operation – patients who do not attend appointments along their pathways
- Clinical exceptions – patients for whom it is not clinically appropriate to start treatment within 18 weeks

In addition, NHS England introduced a zero tolerance of any referral to treatment waits of more than 52 weeks in 2013/14.

In June 2015, Simon Stevens accepted Sir Bruce Keogh's recommendations for improvements to the waiting time standards for elective care. The admitted (90%) and non-admitted (95%) operational standards were abolished, and the incomplete pathway standard (above) became the sole measure of patients' constitutional right to start treatment within 18 weeks. On 1 October 2015, the National Health Service Commissioning Board and Clinical Commissioning Groups (Responsibilities and Standing Rules) (Amendment) (No.2) Regulations 2015 came into effect, removing the provision to report pauses or suspensions in RTT waiting time clocks in monthly RTT returns to NHS England and removing the admitted and non-admitted standards.

The Delivery plan for tackling the COVID-19 backlog of elective care released in February 2022 set the ambition of eliminating the longest waits of over two years by July 2022.³

4. RTT waiting times data collection

RTT data is collected from providers of consultant-led services for NHS patients in England and is reviewed by English commissioners.

The data measures RTT waiting times in weeks, split by treatment function. The treatment functions are based on consultant specialties. The data return includes all

³ Except where patients choose to wait longer and for a very small number of specific highly specialised areas that may need tailored plans to tackle the backlog, as was the case before the pandemic.

patients whose RTT clock stopped at any point in the reporting period or whose RTT clock is still running at the end of the reporting period.

For the period to September 2015, there were two main central returns:

- Unadjusted: covering admitted patients, non-admitted patients, and patients on incomplete pathways.
- Adjusted: covering admitted patients on an adjusted basis. Adjustments were permitted to admitted pathways for clock pauses, where a decision to admit for treatment had been made, and the patient had declined at least two reasonable appointment offers for admission. The RTT clock was paused for the duration of the time between the earliest reasonable date offered and the date from which the patient made themselves available for admission for treatment.

For October 2015 data onwards, the following reporting requirements changed:

- There was no longer a requirement for providers to submit admitted adjusted data.
- Unadjusted admitted and non-admitted completed pathway data was still required but no longer used for monitoring against operational standards.
- The requirement to report incomplete pathway data remained unchanged – and had always been an unadjusted submission.
- Two new data items were added to the monthly data return: incomplete pathways where a decision has been made to admit the patient for treatment and new RTT pathways.

The figures for incomplete pathways with a decision to admit for treatment consist of cases where first definitive treatment has not started and a clinical decision to admit to a hospital bed for treatment has been made and the patient is awaiting admission, regardless of whether a date to admit has been given.

The difference between the values submitted for this data item and for total incomplete pathways equates to the number of incomplete pathways without a decision to admit for treatment. This will include patients where first contact has not yet been made, patients waiting for first definitive treatment as an outpatient and patients where a decision to admit for a diagnostic procedure has been made.

For new RTT pathways, providers are asked to submit the number of new RTT pathways in the reporting month. In other words, RTT pathways where the clock start date is within the reporting month. This will include those where the clock also stopped within the reporting month.

For April 2021 data onwards, the following reporting requirements changed (further details available at [DCB0095: Consultant-led referral to treatment \(RTT\) waiting times - NHS Digital](#)):

- The use of the X24 code was phased out entirely and the more granular NHS commissioning codes used instead. This means that we are collecting and

publishing a breakdown of NHSE-commissioned services that was previously grouped together under the single code X24.

- Additional weekly time bands from 52-53 weeks to 104+ were added to the completed admitted, completed non-admitted and incomplete pathway sections of the collection.
- Changes to the treatment function categories to:
 - a. Reflect 21/22 changes as notified by NHS Digital. The changes fall into two categories:
 - Update to treatment function names.
 - Update to the guidance on reporting 'exceptions' in response to the introduction of new treatment function codes. Two new exceptions were added:
 - Orthopaedic Service (111) and Trauma Surgery Service (115) should be included in Trauma and Orthopaedics (110). Note this is in addition to the existing reporting exception that Spinal Surgery Service (108) should be included in Trauma and Orthopaedics (110).
 - Oral and Maxillofacial Surgery (145) and Maxillofacial Surgery (144) should be included in Oral Surgery (140).
 - b. Separate the 'Other' category into five groups:
 - Other – Medical Services
 - Other – Mental Health Services
 - Other – Surgical Services
 - Other – Paediatric Services
 - Other – Other Services

Pathways commissioned by NHS England are shown under the following commissioner codes in the publication files:

- 13Q NATIONAL COMMISSIONING HUB 1
- 13R LONDON COMMISSIONING HUB
- 14A MIDLANDS COMMISSIONING HUB
- 14E EAST OF ENGLAND COMMISSIONING HUB
- 14F SOUTH WEST COMMISSIONING HUB
- 14G SOUTH EAST COMMISSIONING HUB
- 14M LONDON - H&J COMMISSIONING HUB
- 14Q MIDLANDS - H&J COMMISSIONING HUB
- 14R EAST OF ENGLAND - H&J COMMISSIONING HUB
- 14T SOUTH WEST - H&J COMMISSIONING HUB
- 27T NORTH WEST COMMISSIONING HUB
- 32T NORTH WEST - H&J COMMISSIONING HUB
- 76A NORTH EAST AND YORKSHIRE - H&J COMMISSIONING HUB
- 85J NORTH EAST AND YORKSHIRE COMMISSIONING HUB
- 97T SOUTH EAST - H&J COMMISSIONING HUB
- X24 NHS ENGLAND
- Y56 LONDON COMMISSIONING REGION
- Y58 SOUTH WEST COMMISSIONING REGION
- Y59 SOUTH EAST COMMISSIONING REGION

- Y60 MIDLANDS COMMISSIONING REGION
- Y61 EAST OF ENGLAND COMMISSIONING REGION
- Y62 NORTH WEST COMMISSIONING REGION
- Y63 NORTH EAST AND YORKSHIRE COMMISSIONING REGION

In regional aggregations in the publication files, all pathways under any of these commissioner codes are aggregated into the 'NHS ENGLAND' region totals.

The overarching commissioning code X24, was used for all NHS England Commissioned activity until March 2020, and started to be phased out from the monthly RTT data return with effect from the April 2020 data return onwards. Providers that were able to submit data under the relevant commissioner code as outlined in the NHS England Commissioning Responsibilities Matrix were asked to do so from the April 2020 data return onwards. From the April 2021 data return onwards, the X24 code has been removed from the monthly RTT data return.

See <https://www.england.nhs.uk/data-services/commissioning-flows/> for more information on the Commissioner Assignment Method, and Appendix A of the Commissioner Assignment Method – Supporting Tables Spreadsheet 2020/21 spreadsheet at <https://www.england.nhs.uk/publication/commissioner-assignment-method/> for details of the codes used.

If they wish, providers can submit data on RTT pathways commissioned by non-English commissioners under commissioner code NONC. However, it is not mandatory to provide details of these pathways in the monthly RTT data return and therefore this data does not provide a complete picture of non-English commissioned pathways. NONC pathways are excluded from all published outputs apart from the raw data CSV file published each month (titled 'Full CSV data file [mmmyy] (ZIP, xxxxK).

5. RTT data availability

Data for admitted patients (patients whose RTT clock stopped with an inpatient/day case admission) has been published each month since January 2007 on an unadjusted basis and was published each month between March 2008 and September 2015 on an adjusted basis.

Data for non-admitted patients (patients whose RTT clock stopped during the month for reasons other than an inpatient/day case admission) and incomplete RTT times for patients whose RTT clock is still running has been published each month since August 2007.

RTT waiting times figures are published to a pre-announced timetable, roughly 6 weeks after the end of the reference month. Publication day is typically the second Thursday of each calendar month.

Revisions to published figures are released, generally on a six-monthly basis, in accordance with the NHS England statistics revision policy. This policy is available from the NHS England website at the following address:

<https://www.england.nhs.uk/statistics/wp-content/uploads/sites/2/2018/12/SDCS->

[Revisions-Policy v1.0.pdf](#). RTT revisions are usually released in January and July.

For months where one or more acute trusts do not submit RTT data, we use the following approach to estimate the impact of missing data:

- For incomplete RTT pathways, we factor in estimates based on the latest data submitted for the missing acute trust.
- To estimate the impact of missing data on completed (admitted and non-admitted) pathways, the total number of pathways per working day in each provider in the month prior to the gap in reporting is applied to all missing months multiplied by the relevant number of working days in each month.

The impact of missing data varies depending on the measure being considered. The biggest impact is on measures of volume, such as the number of completed pathways and the size of the RTT waiting list. The impact of missing trusts on the percentage of incomplete pathways within 18 weeks at England is generally minimal, however, where a large trust that has previously had a particular high or low percentage of incomplete pathways within 18 weeks does not submit data there can be a material impact on the England-level percentage.

For example, Medway NHS Foundation Trust was unable to submit data for October or November 2015. At the end of September 2015, 70.1% of patients waiting to start treatment at Medway NHS Foundation Trust were waiting up to 18 weeks. The impact of removing the figures for this trust from the published September 2015 England-level figure of 92.5% of incomplete pathways within 18 weeks is an increase of 0.25 percentage points to 92.8%. This also caused a discontinuity in the specialty level, commissioner and regional series between September and October 2015.

A spreadsheet showing a time series for total admitted, non-admitted and incomplete pathways with and without estimates for missing data accompanies this statistical press notice.

6. Median and 92nd percentile waiting times

The median is the preferred measure of the average waiting time as it is less susceptible to extreme values than the mean. The median waiting time is the middle value when all patients are ordered by length of wait, in other words, the midpoint of the RTT waiting times distribution or 50th percentile. For incomplete pathways, 50% of patients were waiting within the median waiting time.

The 92nd percentile waiting time is shown for incomplete pathways to correspond with the 92% operational standard. This is the time that 92% of patients had been waiting less than (and 8% of patients had been waiting more than). For example, if the 92nd percentile is 17 weeks, then 92% of patients had been waiting less than 17 weeks at the end of the reporting period and 8% of patients had been waiting more than 17 weeks.

It should be noted that median and 92nd percentile waiting times are calculated from aggregate data, rather than patient-level data, and therefore are only estimates of the position on average waits.

For February and March 2021, it was not possible to estimate a more precise 92nd percentile value than 'greater than 52 weeks' as the aggregate data return included all patients waiting more than 52 weeks in a '52+ week' category for those months. For April 2021 data onwards, the monthly data return was amended to include time bands from '52-53 weeks' to '104+ weeks'.

For Oct-22 data onwards, the calculation used to estimate the median has changed to be in-line with that used to estimate the percentile times.

7. Interpretation of RTT waiting times

Care should be taken when making month-on-month comparisons of these figures as measures of waiting time performance are subject to seasonality. For example, adverse weather during winter may change the balance between elective and emergency care. Similarly, the number of patients starting treatment will be influenced by the number of working days in the calendar month.

8. National Statistics

The United Kingdom Statistics Authority has designated these statistics as National Statistics, in accordance with the Statistics and Registration Service Act 2007 and signifying compliance with the Code of Practice for Official Statistics. Designation can be broadly interpreted to mean that the statistics:

- meet identified user needs
- are well explained and readily accessible
- are produced according to sound methods
- are managed impartially and objectively in the public interest

Once statistics have been designated as National Statistics it is a statutory requirement that the Code of Practice shall continue to be observed.

9. Feedback welcomed

We welcome feedback on the content and presentation of RTT statistics within this statistical press notice and those published on the NHS England website. If you have any comments on this, or any other issues regarding RTT statistics, please email england.rtt@nhs.net

10. Additional Information

For press enquiries, please e-mail the NHS England media team at nhsengland.media@nhs.net or call 0113 825 0958 or 0113 825 0959.

The NHS England analyst responsible for publishing these statistics is:

Debbie Moon
Operational Insights, NHS England
7&8 Wellington Place, Leeds LS1 4AP
Email: england.rtt@nhs.net