

# NHS Diagnostic Waiting Times and Activity Data

# NHS Diagnostic Waiting Times and Activity Data

## April 2024 Monthly Report

Version number: 1.0

First published: 13<sup>th</sup> June 2024

Prepared by: Data and Analytics: Operational Insights - Diagnostics  
NHS England

## Contents

Contents .....	3
1 Executive summary .....	4
1.1 Accredited Official Statistics .....	5
2 April 2024 Key Findings.....	6
3 National Trends .....	7
3.1 6+ Week Waits .....	7
3.2 Total Waiting List.....	8
3.3 Median Waiting Time.....	9
3.4 Total Activity .....	9
4 April 2024 Data.....	11
4.1 6+ Week Waits .....	11
4.2 Total Waiting List.....	13
4.3 Median Waiting Times .....	14
4.4 Total Activity .....	14
5 Community Diagnostic Centre April 2024 Data .....	16
5.1 CDC activity.....	16
5.2 CDC data completeness.....	17
6 Annex.....	17
6.1 Methodology .....	17
6.2 Data Revisions .....	17
6.3 Data Availability .....	18
6.4 Glossary .....	18
6.5 Feedback Welcomed.....	19
6.6 Consultation .....	19
6.7 Additional Information.....	19

## 1 Executive summary

This report presents a monthly summary of diagnostic waiting times and activity across the NHS in England. This monthly report is part of a routine series of publications produced by NHS England.

The data presented in this report measures the current waiting times of patients still waiting for any of 15 key diagnostic tests or procedures at the month end. This data is split by number of weeks waiting and by test. The waiting times reported are for those patients who have been referred for a test, but whose test had not taken place by the end of the reporting period. Referrals may be from a variety of sources including GPs.

One of the main measurements covered in this report is the number and proportion of patients waiting six weeks or more for a diagnostic test, from time of referral.

This six-week diagnostic wait was initially introduced as a ‘milestone’ from March 2008 towards achieving the standard Referral to Treatment wait of 18 weeks by December 2008, but diagnostic waiting times now form part of the NHS Constitution. This gives patients the legal right to treatment within 18 weeks of referral (18 week RTT) and as part of this, pledges that patients should not be required to wait six weeks or more for a diagnostic test.

The NHS Standard Contract 2022/23 states that there is a standard threshold of 1% for this pledge. NHS England’s planning guidance for 2023/24 requests that a threshold of at least 5% should be met by March 2025.

The 15 key diagnostic tests included in this report are:

### Imaging

- Magnetic Resonance Imaging (MRI)
- Computerised Tomography (CT)
- Non-obstetric Ultrasound
- Barium Enema
- Dual-Energy X-Ray Absorptiometry (DEXA) Scan

### Physiological Measurements

- Audiology Assessments
- Echocardiography
- Electrophysiology
- Neurophysiology – Peripheral Neurophysiology
- Respiratory Physiology – Sleep Studies
- Urodynamics – Pressures & Flows

### Endoscopy

- Gastroscopy
- Colonoscopy
- Flexible Sigmoidoscopy
- Cystoscopy

For detailed descriptions of each diagnostic test please see the [collection guidance documentation](#).

Some of the key terms used throughout this report are outlined below:

- **6+ Week Waits**  
A count of the number of patients waiting six weeks or more for a diagnostic test at month end from referral.
- **Activity**  
A count of the number of diagnostic tests undertaken during the month.
- **Diagnostic Test**  
A test or procedure of which the primary function is to identify a patient's disease or condition to allow a medical diagnosis to be made.
- **Waiting List**  
A count of the number of patients that are waiting for a diagnostic test at the end of the month.

A more comprehensive glossary is available in the Annex.

All England figures quoted are commissioner based. Commissioner based returns reflect data for patients for whom English commissioners are responsible.

## 1.1 Accredited Official Statistics

The UK Statistics Authority has designated these statistics as Accredited Official Statistics, in accordance with the Statistics and Registration Service Act 2007 and signifying compliance with the Code of Practice for Accredited Official Statistics.

Designation can be broadly interpreted to mean that the statistics:

- meet identified user needs;
- are well explained and readily accessible;
- are produced according to sound methods; and
- are managed impartially and objectively in the public interest.

Once statistics have been designated as Accredited Official Statistics it is a statutory requirement that the Code of Practice shall continue to be observed.

## 2 April 2024 Key Findings

- Diagnostic test activity and waiting times were impacted by the COVID-19 pandemic, which continues to affect the current reporting period and comparisons with previous years.
- The total number of patients waiting six weeks or more from referral for one of the 15 key diagnostic tests at the end of April 2024 was 376,200. This was 23.0% of the total number of patients waiting at the end of the month.
- Nationally, the operational standard of less than 1% of patients waiting six weeks or more was not met this month.
- Compared with April 2023 the total number of patients waiting six weeks or more decreased by 54,600 while the proportion of patients waiting six weeks or more decreased by 4.6 percentage points.
- In the last 12 months, the proportion of patients waiting six weeks or more at the end of a month has varied between 20.8% (February 2024) and 27.5% (August 2023).
- At the end of April 2024, the test with the smallest proportion of patients waiting six weeks or more was Barium Enema with 7.9%. The test with the highest proportion was Urodynamics, with 42.1% of patients waiting six weeks or more.
- An alternative measure of diagnostic waiting times is the average (median) waiting time. The estimated average time that a patient had been waiting for a diagnostic test was 2.7 weeks at the end of April 2024.
- There were 1,635,200 patients waiting for a key diagnostic test at the end of April 2024. This is an increase of 71,900 from April 2023.
- A total of 2,329,000 diagnostic tests were undertaken in April 2024. This is an increase of 312,800 from April 2023.

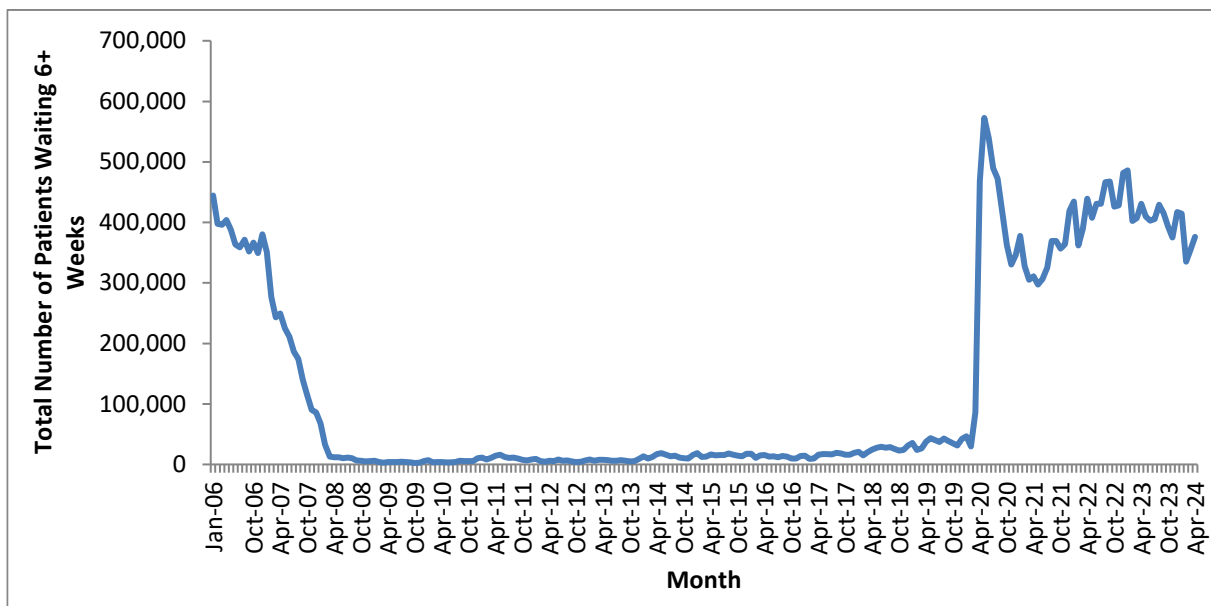
### 3 National Trends

This section analyses trends in monthly diagnostic waiting times and activity data that has been collected since January 2006.

#### 3.1 6+ Week Waits

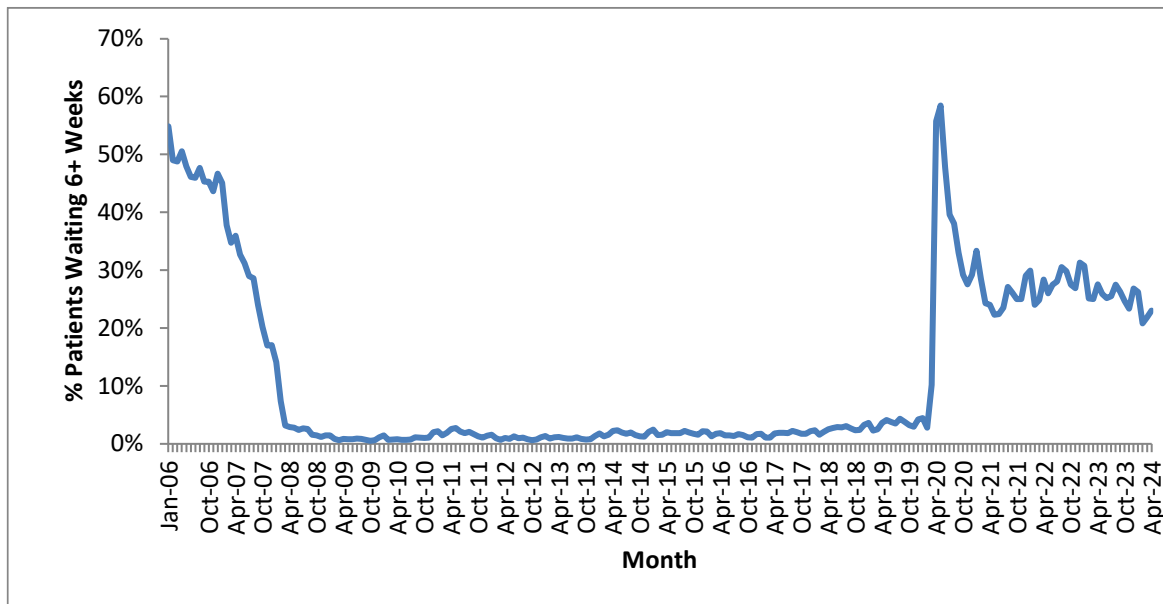
- 3.1.1. The total number of patients waiting six weeks or more dropped sharply between January 2007 and March 2008 (Chart 1), as Trusts worked towards the NHS Improvement Plan (June 2004) milestone that no one should wait six weeks or more for a diagnostic test by March 2008. Since March 2008 there were fluctuations in the total number of patients waiting six weeks or more, with a significant rise between December 2013 and May 2014.
- 3.1.2. The number of patients waiting six weeks or more rose sharply in April 2020 due to the impact of COVID-19. In April 2024 there was an increase of 21,200 in the number of patients waiting six weeks or more from the previous month.

**Chart 1: Total number of patients waiting 6+ weeks at month end for all tests  
January 2006 to April 2024**



- 3.1.3. The proportion of patients waiting six weeks or more shows a similar pattern (Chart 2). In the last 12 months, the proportion of patients waiting six weeks or more at the end of a month has varied between 20.8% (February 2024) and 27.5% (August 2023). The 1% operational standard was last met in November 2013.

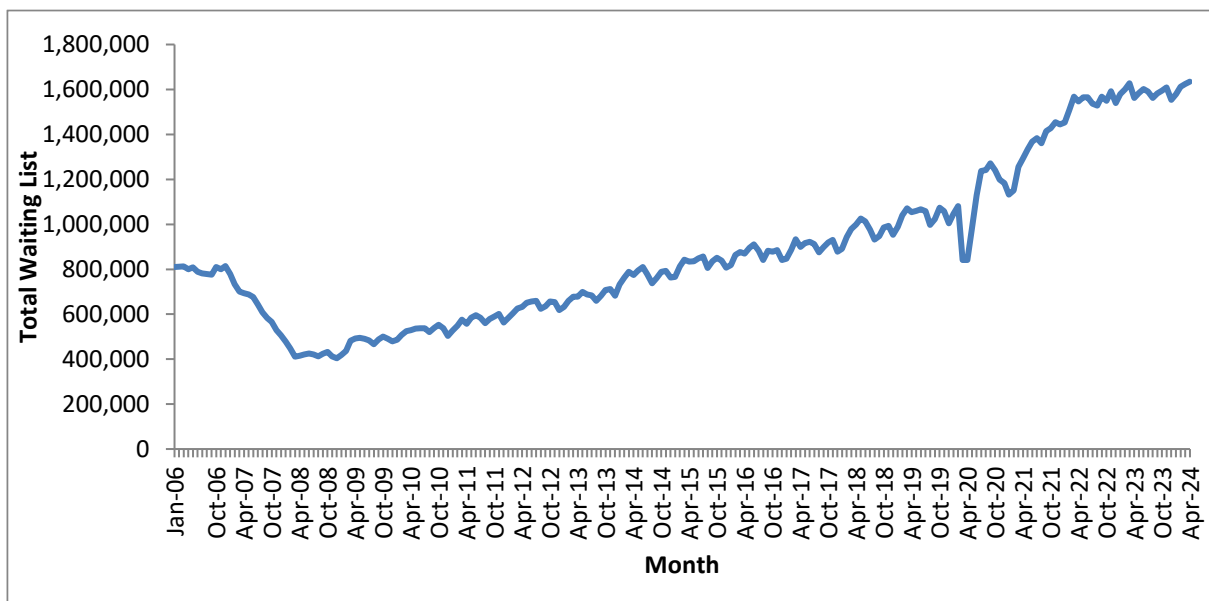
**Chart 2: Percentage of patients waiting 6+ weeks at month end for all tests  
January 2006 to April 2024**



### 3.2 Total Waiting List

3.2.1. As with the number and proportion of patients waiting six weeks or more, the total number of patients waiting at the month end fell between January 2007 and the 6-week milestone in March 2008 (Chart 3). Following a period with a stable total waiting list between March 2008 and January 2009, the underlying trend showed a steady increase before dropping sharply in March 2020 and subsequently rising due to the impact of COVID-19.

**Chart 3: Total number of patients waiting at month end for all tests  
January 2006 to April 2024**

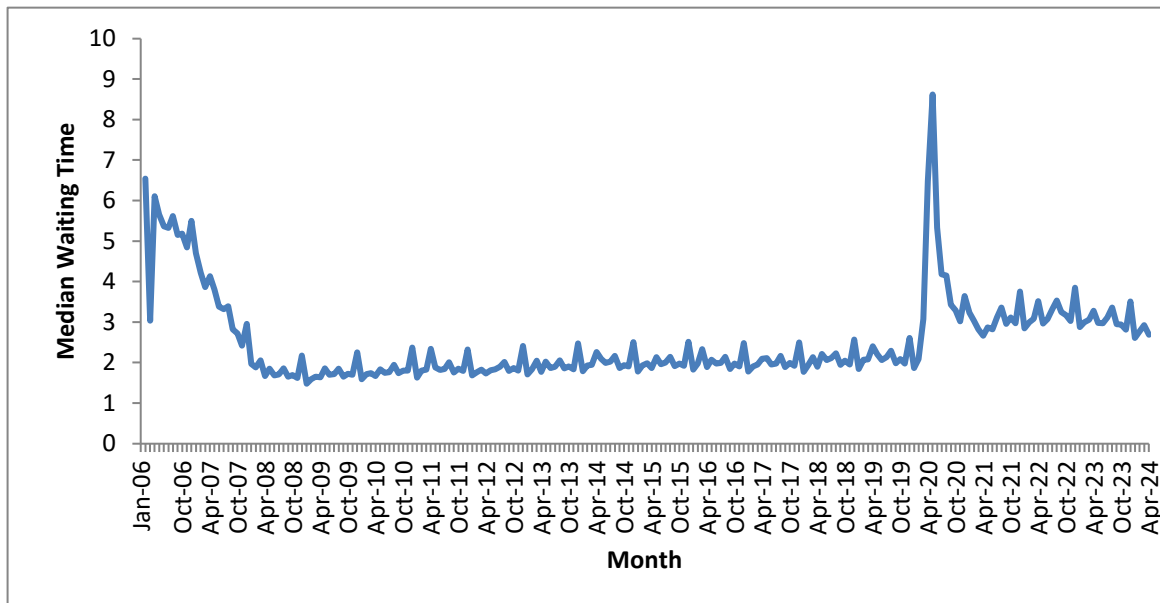




### 3.3 Median Waiting Time

3.3.1. The average (median) waiting time displays a similar trend to the total waiting list and 6 weeks or more waits. After a rapid decrease in the two years leading to the 6-week milestone, the median waiting time remained stable until the COVID-19 period (Chart 4). The data shows significant increases during December every year as a result of the higher number of bank holidays and resulting lower activity. In the last 12 months, the median waiting time had a high of 3.5 weeks (December 2023) and a low of 2.6 weeks (January 2024). The median waiting time in April 2024 was 2.7 weeks.

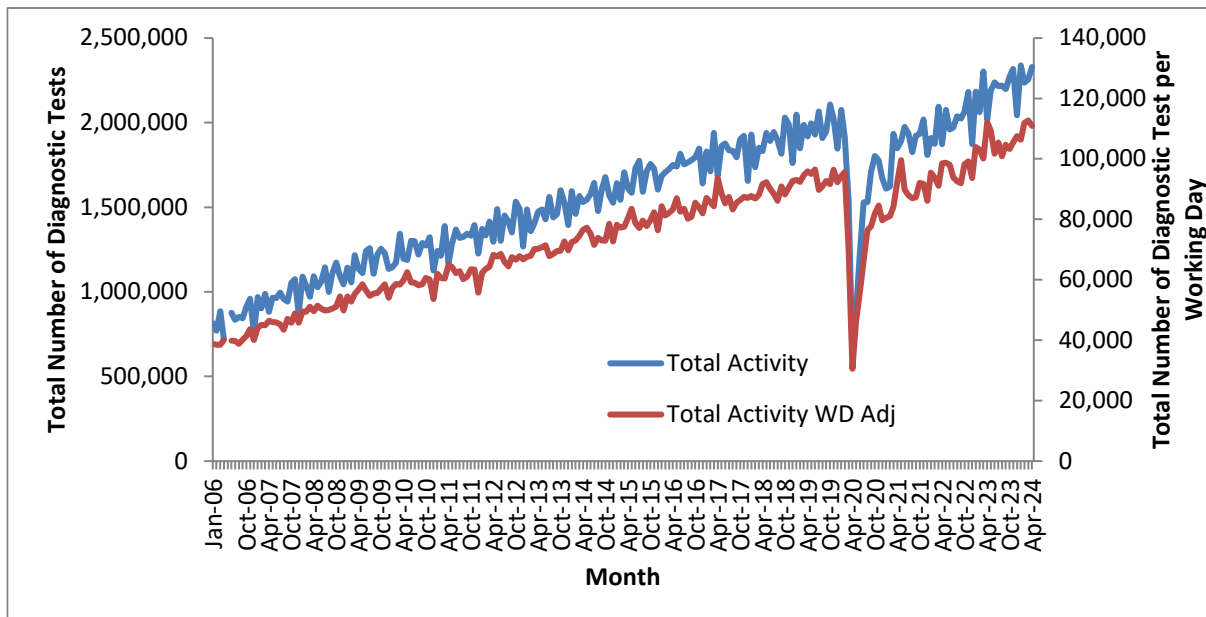
Chart 4: Median waiting time for all tests – January 2006 to April 2024



### 3.4 Total Activity

- 3.4.1. The monthly activity figure can significantly fluctuate month to month, with particularly notable decreases in December due to the bank holidays. If the data is adjusted to show activity per working day, the monthly variation becomes less pronounced (Chart 5).
- 3.4.2. The underlying trend showed an increase from January 2006 to the COVID-19 period when total activity in April 2020 fell by 68% compared to April 2019. Monthly activity subsequently started to rise again, with some further setbacks, and recover to pre-pandemic levels.

**Chart 5: Total activity and working day adjusted activity per month for all tests January 2006 to April 2024**



Note: Activity data was not collected in May 2006 and all activity time series graphs will show missing values for that month

3.4.3. In the previous 12 months, individual tests have shown differing changes in activity. The test with the largest proportional increase in activity was Sleep Studies, where April 2024 activity was 2.9% higher per month than April 2023 (Table 1).

**Table 1: Total activity, by test – April 2023 and April 2024**

	Apr-23	Apr-24	Average monthly growth
MRI	339,721	378,292	0.9%
CT	625,500	703,124	1.0%
Non-obstetric Ultrasound	613,976	711,919	1.2%
Barium Enema	2,898	3,997	2.7%
Dexa Scan	40,715	47,790	1.3%
Audiology Assessments	81,918	110,692	2.5%
Echocardiography	132,362	162,253	1.7%
Electrophysiology	553	683	1.8%
Peripheral Neurophysiology	17,406	21,129	1.6%
Sleep Studies	12,980	18,340	2.9%
Urodynamics	4,876	6,490	2.4%
Colonoscopy	50,495	53,982	0.6%
Flexi Sigmoidoscopy	15,282	16,361	0.6%
Cystoscopy	22,917	31,164	2.6%
Gastroscopy	54,601	62,770	1.2%
<b>All Tests</b>	<b>2,016,200</b>	<b>2,328,986</b>	<b>1.2%</b>

## 4 April 2024 Data

This section analyses the April 2024 diagnostic waiting times and activity data and includes comparisons between tests, regions, providers and commissioners.

### 4.1 6+ Week Waits

- 4.1.1. At the end of April 2024, there were a total of 376,200 patients waiting six weeks or more from referral for one of the 15 key diagnostic tests. This was 23.0% of the total number of patients waiting at the end of the month.
- 4.1.2. Compared with April 2023, the number of patients waiting six weeks or more decreased by 54,600, while the proportion of patients waiting six weeks or more decreased by 4.6 percentage points.
- 4.1.3. Compared with April 2023, the test with the largest increase in the proportion of patients waiting six weeks or more was Electrophysiology, which increased by 22.5 percentage points. The test with the largest decrease was Colonoscopy, which decreased by 15.7 percentage points (Table 2).

**Table 2: Proportion of patients waiting 6+ weeks, by test – April 2023 and April 2024**

	Apr-23	Apr-24	Difference (%age points)
MRI	22.8%	20.5%	-2.2
CT	15.7%	12.3%	-3.4
Non-obstetric Ultrasound	23.7%	18.8%	-4.8
Barium Enema	5.0%	7.9%	3.0
Dexa Scan	34.6%	25.3%	-9.3
Audiology Assessments	34.1%	39.3%	5.3
Echocardiography	39.1%	31.6%	-7.5
Electrophysiology	16.0%	38.5%	22.5
Peripheral Neurophysiology	24.6%	33.6%	9.0
Sleep Studies	36.2%	36.9%	0.6
Urodynamics	44.0%	42.1%	-1.9
Colonoscopy	41.7%	26.0%	-15.7
Flexi Sigmoidoscopy	43.4%	33.7%	-9.8
Cystoscopy	39.8%	29.4%	-10.4
Gastroscopy	35.1%	27.0%	-8.1
<b>All Tests</b>	<b>27.6%</b>	<b>23.0%</b>	<b>-4.6</b>

Note: Figures may differ due to rounding.

- 4.1.4. Compared with April 2023, the test type with the smallest change in the proportion of patients waiting six weeks or more was Physiological Measurement with a decrease of 1.1 percentage points. Imaging decreased by 4.2 percentage points, while Endoscopy decreased by 11.6 percentage points (Table 3). See section 5.4 for which tests are included under the different test types.

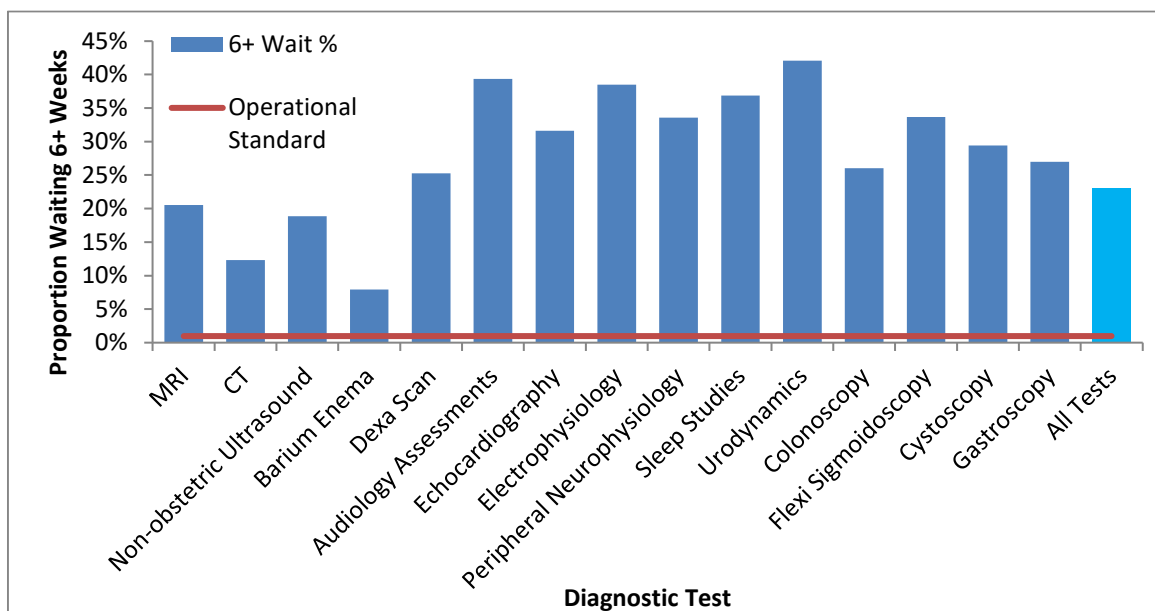
**Table 3: Proportion of patients waiting 6+ weeks, by test type – April 2023 and April 2024**

	Apr-23	Apr-24	Difference (percentage points)
Imaging	22.8%	18.6%	-4.2
Physiological Measurement	36.2%	35.1%	-1.1
Endoscopy	39.5%	27.8%	-11.6
<b>Total</b>	<b>27.6%</b>	<b>23.0%</b>	<b>-4.6</b>

Note: Figures may differ due to rounding.

4.1.5. The operational standard that less than 1% of patients should wait six weeks or more from referral for a diagnostic test was met in none of the 15 key tests this month. The test with the lowest proportion of patients waiting six weeks or more was Barium Enema (7.9%), whilst the test with the highest proportion was Urodynamics (42.1%) (Chart 6).

**Chart 6: Percentage of patients waiting 6+ weeks, by test – April 2024**



4.1.6. 141 of the 154 acute trusts that submitted data for April 2024 failed to meet the 1% operational standard.

4.1.7. All 42 Commissioners (ICBs) failed to meet the 1% operational standard.

4.1.8. None of the seven NHS England Regions met the 1% operational standard. The proportion of patients waiting six weeks or more for a diagnostic test varied by region between 18.3% (North East and Yorkshire) and 31.5% (East of England) (Table 4).

4.1.9. Feedback from NHS trusts has indicated that variations can exist between different regions due to a variety of reasons, from machines breaking down to staff shortages in trusts that usually only affect one region.

Table 4: April 2024 Diagnostic Waiting Times and Activity by Regional Team\*

Region	Number of patients waiting six weeks or more at month end	Percentage of patients waiting six weeks or more at month end	Total number of patients waiting at month end	Total activity undertaken in month	Median waiting time
London	60,402	20.6%	292,822	377,475	2.7
South West	34,555	22.4%	154,509	223,065	2.6
South East	51,822	22.1%	234,444	364,579	2.5
Midlands	85,668	26.2%	327,241	437,653	2.9
East of England	65,593	31.5%	208,273	259,987	3.4
North West	37,378	18.8%	198,418	312,210	2.5
North East and Yorkshire	39,559	18.3%	215,663	344,511	2.4
<b>England</b>	<b>376,165</b>	<b>23.0%</b>	<b>1,635,239</b>	<b>2,319,480</b>	<b>2.7</b>

\*Includes all independent sector providers and excludes centrally commissioned.

## 4.2 Total Waiting List

4.2.1. At the end of April 2024 there were a total of 1,635,200 patients still waiting for a diagnostic test. This is an increase of 71,800 (4.6%) from April 2023.

4.2.2. The test with the largest waiting list was Non-obstetric Ultrasound, which accounted for 34.7% of the total waiting list, or 568,100 patients. The test with the smallest waiting list was Electrophysiology, which accounted for 0.04% of the total waiting list, or 700 patients (Table 5).

Table 5: Total number of patients waiting at month end, by test – April 2023 and April 2024

	Apr-23	Apr-24	Growth (%age)
MRI	273,989	313,534	14.4%
CT	169,969	178,832	5.2%
Non-obstetric Ultrasound	543,892	568,132	4.5%
Barium Enema	1,817	2,697	48.4%
Dexa Scan	65,951	60,583	-8.1%
Audiology Assessments	93,772	112,248	19.7%
Echocardiography	157,654	158,378	0.5%
Electrophysiology	501	730	45.7%
Peripheral Neurophysiology	27,423	33,955	23.8%
Sleep Studies	25,940	29,905	15.3%
Urodynamics	8,332	8,380	0.6%
Colonoscopy	75,715	60,571	-20.0%
Flexi Sigmoidoscopy	27,076	21,815	-19.4%
Cystoscopy	26,089	22,604	-13.4%
Gastroscopy	65,272	62,875	-3.7%
<b>All Tests</b>	<b>1,563,392</b>	<b>1,635,239</b>	<b>4.6%</b>

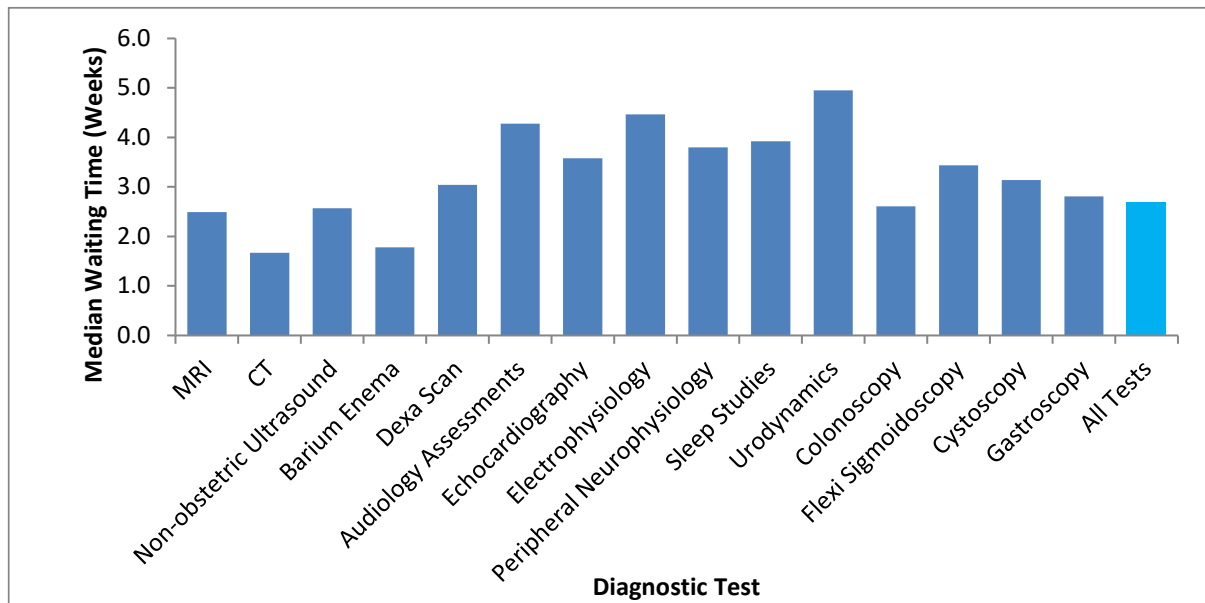
Note: Barium Enema is a test that should be replaced by Colonoscopy or CT Colonography, so the number of tests undertaken should be reducing.

4.2.3. The largest increase in the number of patients waiting by test has been for Barium Enema where the reported waiting list grew by 48.4% compared with April 2023.

### 4.3 Median Waiting Times

4.3.1. At the end of April 2024, the estimated median waiting time for all 15 diagnostic tests was 2.7 weeks from the time of referral, down from 2.9 weeks in the previous month. The test with the shortest median waiting time was CT at 1.7 weeks. The test with the longest median waiting time was Urodynamics at 5.0 weeks (Chart 7).

Chart 7: Median waiting time by test – April 2024



### 4.4 Total Activity

- 4.4.1. In total 2,329,000 of the 15 key diagnostic tests were performed during April 2024. This is an increase of 312,800 (15.5%) from April 2023 but a decrease of 1.0% when adjusted for working days (Table 6).
- 4.4.2. The test with the highest activity was Non-obstetric Ultrasound with 711,900 tests taking place. This accounted for 30.6% of all activity in April 2024. The test with the lowest activity was Electrophysiology with 700 tests taking place. This accounted for 0.03% of all activity this month.
- 4.4.3. The number of tests conducted over the last 12 months has increased by 8.5% from the same period last year.

## Accredited Official Statistics

**Table 6: Total activity and growth, by test – April 2023 and April 2024**

Note: Barium Enema is a test that should be replaced by Colonoscopy or CT Colonography, so the number of tests undertaken should be reducing.

	Apr-24	Apr-23	YTD 24/25	YTD 23/24	Growth Apr 24 vs Apr 23	Growth YTD 24/25 vs YTD 23/24	Adjusted Growth Apr 24 vs Apr 23	Adjusted Growth YTD 24/25 vs YTD 23/24
MRI	378,292	339,721	378,292	339,721	11.4%	11.4%	-4.6%	-4.6%
CT	703,124	625,500	703,124	625,500	12.4%	12.4%	-3.6%	-3.6%
Non-obstetric Ultrasound	711,919	613,976	711,919	613,976	16.0%	16.0%	-0.6%	-0.6%
Barium Enema	3,997	2,898	3,997	2,898	37.9%	37.9%	18.2%	18.2%
Dexa Scan	47,790	40,715	47,790	40,715	17.4%	17.4%	0.6%	0.6%
Audiology Assessments	110,692	81,918	110,692	81,918	35.1%	35.1%	15.8%	15.8%
Echocardiography	162,253	132,362	162,253	132,362	22.6%	22.6%	5.1%	5.1%
Electrophysiology	683	553	683	553	23.5%	23.5%	5.9%	5.9%
Peripheral Neurophysiology	21,129	17,406	21,129	17,406	21.4%	21.4%	4.0%	4.0%
Sleep Studies	18,340	12,980	18,340	12,980	41.3%	41.3%	21.1%	21.1%
Urodynamics	6,490	4,876	6,490	4,876	33.1%	33.1%	14.1%	14.1%
Colonoscopy	53,982	50,495	53,982	50,495	6.9%	6.9%	-8.4%	-8.4%
Flexi Sigmoidoscopy	16,361	15,282	16,361	15,282	7.1%	7.1%	-8.2%	-8.2%
Cystoscopy	31,164	22,917	31,164	22,917	36.0%	36.0%	16.6%	16.6%
Gastroscopy	62,770	54,601	62,770	54,601	15.0%	15.0%	-1.5%	-1.5%
<b>All Tests</b>	<b>2,328,986</b>	<b>2,016,200</b>	<b>2,328,986</b>	<b>2,016,200</b>	<b>15.5%</b>	<b>15.5%</b>	<b>-1.0%</b>	<b>-1.0%</b>

## 5 Community Diagnostic Centre April 2024 Data

This section analyses the April 2024 activity data for Community Diagnostic Centres (CDCs) and includes comparisons with the main April 2024 activity data. Activity data for CDCs includes all the activity they have performed in the month for 15 diagnostic tests (which comprise around half of the diagnostic tests they provide); no waiting list data is collected for CDCs. The CDC activity is also included in the main activity report, since that covers diagnostic tests in all settings, but is only identified as CDC activity in the separate tables.

### 5.1 CDC activity

- 5.1.1. In April 2024, CDCs performed 200,500 diagnostic tests, 8.6% of the total. The most common were imaging tests and the highest percentage of imaging tests by CDCs was for Magnetic Resonance Imaging (12.9%), see Table 7.

Table 7: Total and CDC activity, by test – April 2024

Test	All providers	CDCs	% by CDC
Magnetic Resonance Imaging	378,292	48,626	12.9%
Computed Tomography	703,124	66,747	9.5%
Non-obstetric Ultrasound	711,919	59,300	8.3%
Barium Enema	3,997	20	0.5%
DEXA Scan	47,790	5,626	11.8%
Audiology - Audiology Assessments	110,692	1,366	1.2%
Cardiology - Echocardiography	162,253	9,369	5.8%
Cardiology - Electrophysiology	683	147	21.5%
Neurophysiology - Peripheral Neurophysiology	21,129	164	0.8%
Respiratory physiology - Sleep Studies	18,340	2,150	11.7%
Urodynamics - Pressures & Flows	6,490	210	3.2%
Colonoscopy	53,982	3,101	5.7%
Flexi Sigmoidoscopy	16,361	805	4.9%
Cystoscopy	31,164	210	0.7%
Gastroscopy	62,770	2,632	4.2%
<b>All tests</b>	<b>2,328,986</b>	<b>200,473</b>	<b>8.6%</b>

- 5.1.2. In April 2024, the region with the highest diagnostic activity in CDCs was the Midlands, with 41,900 tests (9.6% of their total). The region with the highest percentage of tests by CDCs, was the South East, with 41,600 tests (11.4% of their total), see Table 8.



Table 8: Total and CDC activity, by commissioning region – April 2024

Test	All providers	CDCs	% by CDC
London	377,475	26,543	7.0%
South West	223,065	21,476	9.6%
South East	364,579	41,574	11.4%
Midlands	437,653	41,853	9.6%
East of England	259,987	13,535	5.2%
North West	312,210	30,067	9.6%
North East and Yorkshire	344,511	24,612	7.1%
<b>England</b>	<b>2,328,986</b>	<b>200,473</b>	<b>8.6%</b>

## 5.2 CDC data completeness

5.2.1. In April 2024, 149 CDC sites (including spoke sites now counted separately) were invited to submit activity data and 138 are included in the activity counts (93% response rate). The activity is CDC-funded and should exclude services that have moved to the CDC from existing sites, making it additional activity.

## 6 Annex

### 6.1 Methodology

5.1.1. NHS England compiles diagnostic waiting time and activity data through a central return. Data collected includes:

- The number of patients waiting at the month end, split by test and week.
- Total activity classified as either Waiting List tests (excluding planned), Planned tests, or Unscheduled tests.

5.1.2. Providers submit data to NHS England via SDCS where it is checked and signed off by commissioners. For further details on how the data is collected and the SDCS system, please refer to the [NHSE Collection Guidance](#).

### 6.2 Data Revisions

5.2.1. Revisions to published figures are released on a six-monthly basis and in accordance with the NHS England's revision policy. For more information on the revision policy please refer to the [SDCS Revisions Policy Document](#). Revisions were last published in September 2023 for the months January 2022 through to April 2023.

## 6.3 Data Availability

5.3.1. Monthly diagnostic waiting time and activity data is published on a monthly timetable. [A full calendar of all statistical publications can be found here.](#)

## 6.4 Glossary

### Community Diagnostic Centre

Community diagnostic centres (CDCs) provide a broad range of elective diagnostics (including checks, scans and tests) away from acute facilities, so reducing pressure on hospitals, providing quicker access to tests and greater convenience to patients. The earliest CDCs were started in 2021 and the list of sites and their services continues to expand. CDCs may use a range of spoke sites and submit aggregated activity data for them. They are hosted by acute Trusts but may receive patients from other Trusts.

### Endoscopy

A categorisation of diagnostic tests that include: Colonoscopy; Flexi Sigmoidoscopy; Cystoscopy and Gastroscopy.

### Imaging

A categorisation of diagnostic tests that include: Magnetic Resonance Imaging (MRI); Computed Tomography (CT); Non-obstetric Ultrasound; Barium Enema and DEXA Scan.

### Integrated Care Board (ICB)

Integrated care boards (ICBs) replaced clinical commissioning groups (CCGs) in the NHS in England from 1 April 2023. ICBs oversee partnerships of organisations that come together to plan and deliver joined up health and care services.

### Median Waiting Time

A measurement of the average time patients have been waiting for a diagnostic test. The median is the middle value when waiting times are put in numerical order. 50% of patients have been waiting less than the median. The median is the preferred measurement of average waiting time as it is less susceptible to extreme values than the mean.

### Physiological Measurement

A categorisation of diagnostic tests that include: Audiology Assessments; Echocardiology; Electrophysiology: Peripheral Neurophysiology; Sleep Studies and Urodynamics.

### Provider

An organisation that provides NHS treatment or care, for example, an NHS Acute Trust, Mental Health Trust, Community provider, or an Independent Sector organisation.

### Region

One of seven geographical areas of NHS England responsible for the quality, financial and operational performance of all NHS organisations in their region.

## 6.5 Feedback Welcomed

We welcome feedback on the content and presentation of statistics within this report and those published on the NHS England website.

If you have any comments on this, or any other issues regarding these statistics, then please email [england.nhsdata@nhs.net](mailto:england.nhsdata@nhs.net)

## 6.6 Consultation

Between 8 February 2018 and 5 April 2018, NHS England consulted on the future of the Quarterly Diagnostics Census and Monthly Diagnostics Waiting Times and Activity Returns. The outcome document for the consultation was published 30 March 2020 and confirmed the decision to stop collecting the Quarterly Diagnostics Census on a permanent basis and to continue the monthly diagnostics waiting times and activity return (DM01) in its current form. Find out more at:

<https://www.engage.england.nhs.uk/consultation/diagnostics-census-waiting-times-activity-return>

## 6.7 Additional Information

[Full details of diagnostics data for individual organisations are available here.](#)

For press enquiries please contact the NHS England media team on 0113 825 0958 or 0113 825 0959. Email enquiries should be directed to [nhsengland.media@nhs.net](mailto:nhsengland.media@nhs.net)

The NHS England analyst responsible for producing these data is:

Sheila Dixon  
Diagnostics, Operational Insights, NHS England  
Email: [england.nhsdata@nhs.net](mailto:england.nhsdata@nhs.net)