

# NHS Diagnostic Waiting Times and Activity Data

# **NHS Diagnostic Waiting Times and Activity Data**

## **December 2024 Monthly Report**

Version number: 1.0

First published: 13<sup>th</sup> February 2025

Prepared by: Data and Analytics: Operational Insights - Diagnostics  
NHS England

## Contents

Contents .....	3
1 Executive summary .....	4
1.1 Accredited Official Statistics .....	5
2 December 2024 Key Findings .....	6
3 National Trends .....	7
3.1 6+ Week Waits .....	7
3.2 Total Waiting List.....	8
3.3 Median Waiting Time.....	9
3.4 Total Activity .....	9
4 December 2024 Data .....	11
4.1 6+ Week Waits .....	11
4.2 Total Waiting List.....	13
4.3 Median Waiting Times.....	14
4.4 Total Activity .....	14
5 Community Diagnostic Centre December 2024 Data .....	16
5.1 CDC activity .....	16
5.2 CDC data completeness .....	17
6 Annex .....	17
6.1 Methodology.....	17
6.2 Data Revisions .....	17
6.3 Data Availability.....	17
6.4 Glossary .....	18
6.5 Feedback Welcomed.....	18
6.6 Consultation .....	19
6.7 Additional Information.....	19

# 1 Executive summary

This report presents a monthly summary of diagnostic waiting times and activity across the NHS in England. This monthly report is part of a routine series of publications produced by NHS England.

The data presented in this report measures the current waiting times of patients still waiting for any of 15 key diagnostic tests or procedures at the month end. This data is split by number of weeks waiting and by test. The waiting times reported are for those patients who have been referred for a test, but whose test had not taken place by the end of the reporting period. Referrals may be from a variety of sources including GPs.

One of the main measurements covered in this report is the number and proportion of patients waiting six weeks or more for a diagnostic test, from time of referral.

This six-week diagnostic wait was initially introduced as a ‘milestone’ from March 2008 towards achieving the standard Referral to Treatment wait of 18 weeks by December 2008, but diagnostic waiting times now form part of the NHS Constitution. This gives patients the legal right to treatment within 18 weeks of referral (18 week RTT) and as part of this, pledges that patients should not be required to wait six weeks or more for a diagnostic test.

The NHS Standard Contract 2022/23 states that there is a standard threshold of 1% for this pledge. NHS England’s planning guidance for 2023/24 requests that progress should be made towards a threshold of at least 5% by March 2025.

The 15 key diagnostic tests included in this report are:

## Imaging

- Magnetic Resonance Imaging (MRI)
- Computerised Tomography (CT)
- Non-obstetric Ultrasound
- Barium Enema
- Dual-Energy X-Ray Absorptiometry (DEXA) Scan

## Physiological Measurements

- Audiology Assessments
- Echocardiography
- Electrophysiology
- Neurophysiology – Peripheral Neurophysiology
- Respiratory Physiology – Sleep Studies
- Urodynamics – Pressures & Flows

## Endoscopy

- Gastroscopy
- Colonoscopy
- Flexible Sigmoidoscopy
- Cystoscopy

For detailed descriptions of each diagnostic test please see the [collection guidance documentation](#).

Some of the key terms used throughout this report are outlined below:

- **6+ Week Waits**  
A count of the number of patients waiting six weeks or more for a diagnostic test at month end from referral.
- **Activity**  
A count of the number of diagnostic tests undertaken during the month.
- **Diagnostic Test**  
A test or procedure of which the primary function is to identify a patient's disease or condition to allow a medical diagnosis to be made.
- **Waiting List**  
A count of the number of patients that are waiting for a diagnostic test at the end of the month.

A more comprehensive glossary is available in the Annex.

All England figures quoted are commissioner based. Commissioner based returns reflect data for patients for whom English commissioners are responsible.

## 1.1 Accredited Official Statistics

The UK Statistics Authority has designated these statistics as Accredited Official Statistics, in accordance with the Statistics and Registration Service Act 2007 and signifying compliance with the Code of Practice for Accredited Official Statistics.

Designation can be broadly interpreted to mean that the statistics:

- meet identified user needs;
- are well explained and readily accessible;
- are produced according to sound methods; and
- are managed impartially and objectively in the public interest.

Once statistics have been designated as Accredited Official Statistics it is a statutory requirement that the Code of Practice shall continue to be observed.

## 2 December 2024 Key Findings

- The total number of patients waiting six weeks or more from referral for one of the 15 key diagnostic tests at the end of December 2024 was 355,900. This was 22.8% of the total number of patients waiting at the end of the month-
- Nationally, the operational standard of less than 1% of patients waiting six weeks or more was not met this month.
- Compared with December 2023 the total number of patients waiting six weeks or more decreased by 61,200 while the proportion of patients waiting six weeks or more decreased by 4.0 percentage points.
- In the last 12 months, the proportion of patients waiting six weeks or more at the end of a month has varied between 19.9% (December 2024) and 26.3% (January 2023).
- At the end of December 2024, the test with the smallest proportion of patients waiting six weeks or more was CT with 9.8%. The test with the highest proportion was Audiology Assessments, with 45.7% of patients waiting six weeks or more.
- An alternative measure of diagnostic waiting times is the average (median) waiting time. The estimated average time that a patient had been waiting for a diagnostic test was 3.2 weeks at the end of December 2024.
- There were 1,562,300 patients waiting for a key diagnostic test at the end of December 2024. This is an increase of 7,000 from December 2023.
- A total of 2,240,900 diagnostic tests were undertaken in December 2024. This is an increase of 149,000 from December 2023.

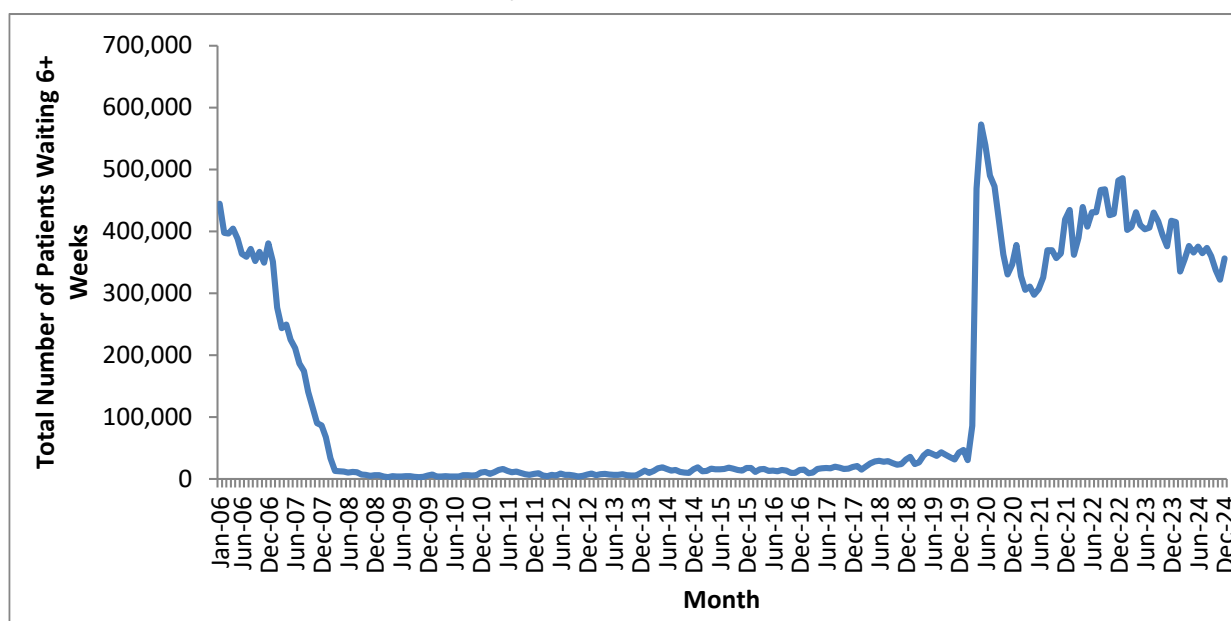
### 3 National Trends

This section analyses trends in monthly diagnostic waiting times and activity data that has been collected since January 2006.

#### 3.1 6+ Week Waits

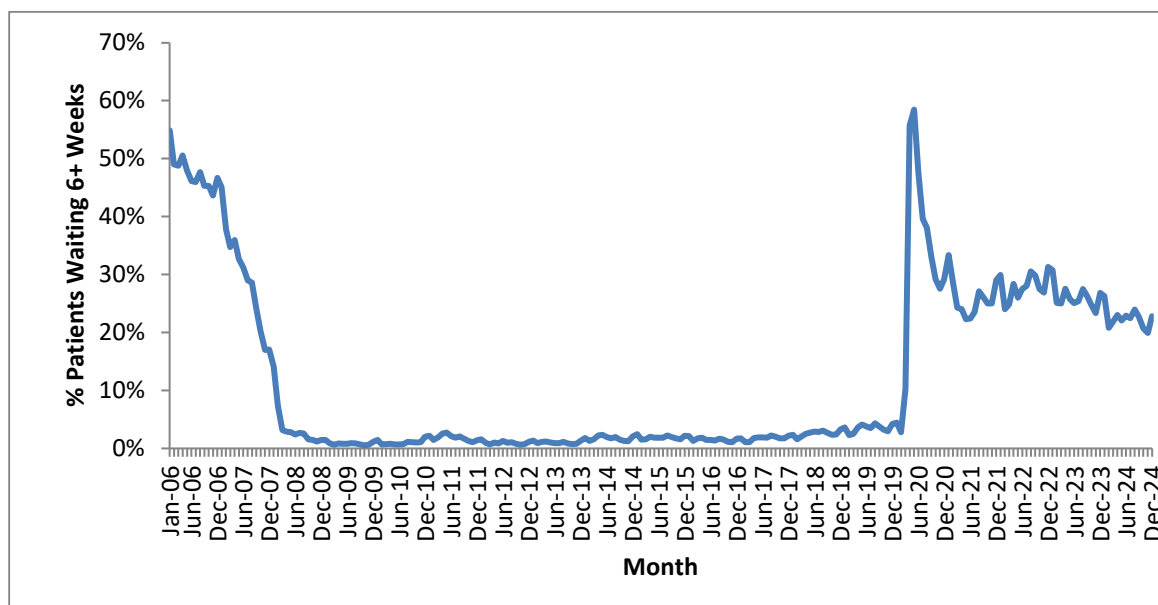
- 3.1.1. The total number of patients waiting six weeks or more dropped sharply between January 2007 and March 2008 (Chart 1), as Trusts worked towards the NHS Improvement Plan (June 2004) milestone that no one should wait six weeks or more for a diagnostic test by March 2008. Since March 2008 there were fluctuations in the total number of patients waiting six weeks or more, with a significant rise between December 2013 and May 2014.
- 3.1.2. The number of patients waiting six weeks or more rose sharply in April 2020 due to the impact of COVID-19. In December 2024 there was an increase of 34,100 in the number of patients waiting six weeks or more from the previous month.

**Chart 1: Total number of patients waiting 6+ weeks at month end for all tests  
January 2006 to December 2024**



- 3.1.3. The proportion of patients waiting six weeks or more shows a similar pattern (Chart 2). In the last 12 months, the proportion of patients waiting six weeks or more at the end of a month has varied between 19.9% (November 2024) and 26.3% (January 2024). The 1% operational standard was last met in November 2013.

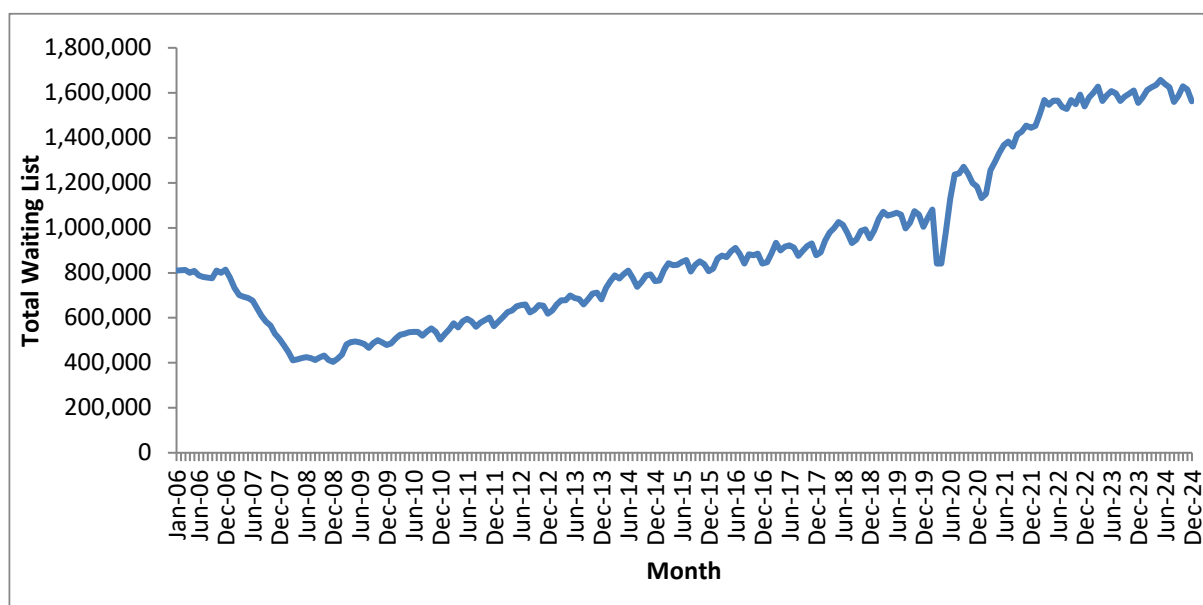
**Chart 2: Percentage of patients waiting 6+ weeks at month end for all tests  
January 2006 to December 2024**



## 3.2 Total Waiting List

- 3.2.1. As with the number and proportion of patients waiting six weeks or more, the total number of patients waiting at the month end fell between January 2007 and the 6-week milestone in March 2008 (Chart 3). Following a period with a stable total waiting list between March 2008 and January 2009, the underlying trend showed a steady increase before dropping sharply in March 2020 due to the impact of COVID-19 and subsequently rising.

**Chart 3: Total number of patients waiting at month end for all tests  
January 2006 to December 2024**

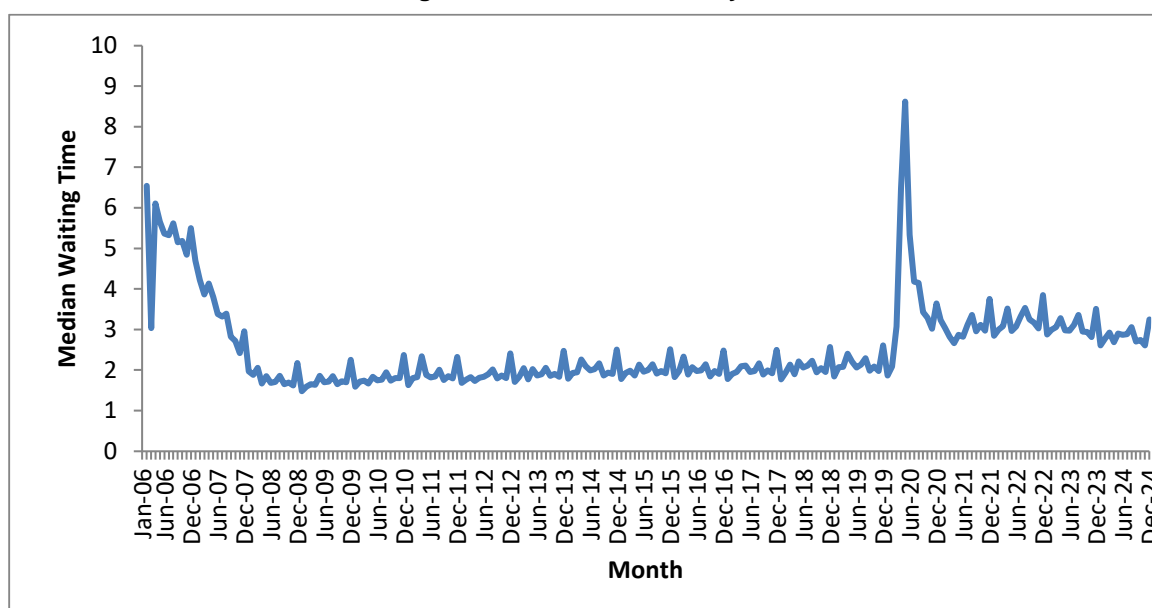




### 3.3 Median Waiting Time

- 3.3.1. The average (median) waiting time displays a similar trend to the total waiting list and 6 weeks or more waits. After a rapid decrease in the two years leading to the 6-week milestone, the median waiting time remained stable until the COVID-19 period (Chart 4). The data shows significant increases during December every year as a result of the higher number of bank holidays and resulting lower activity. In the last 12 months, the median waiting time had a high of 3.2 weeks (December 2024) and a low of 2.6 weeks (January & November 2024). The median waiting time in December 2024 was 3.2 weeks.

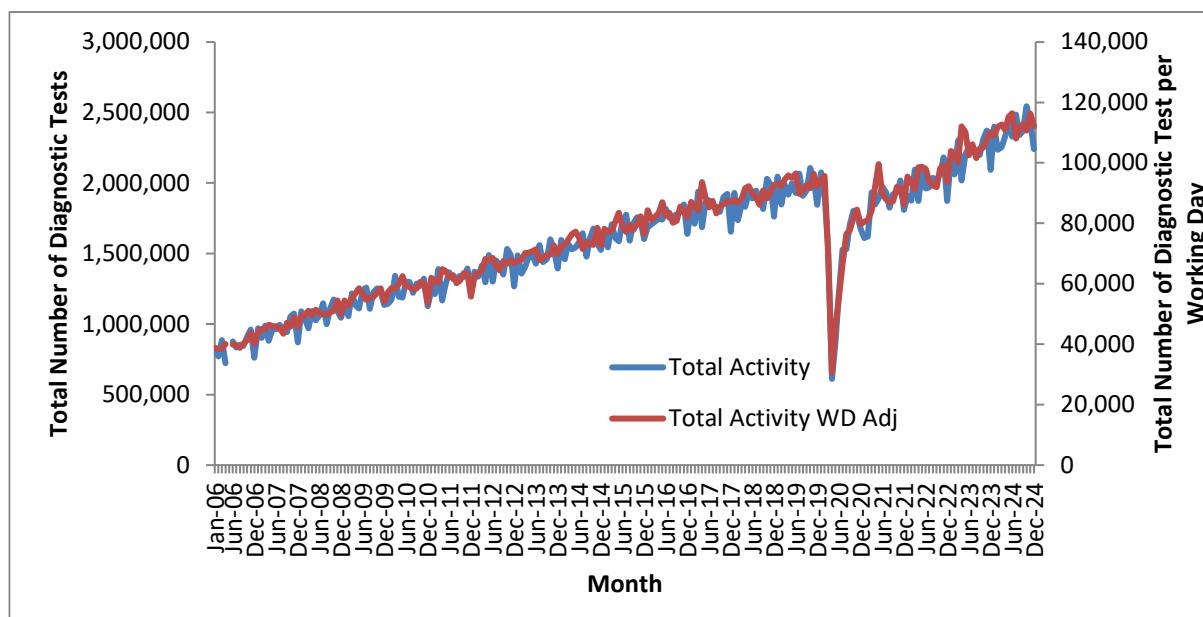
Chart 4: Median waiting time for all tests – January 2006 to December 2024



### 3.4 Total Activity

- 3.4.1. The monthly activity figure can significantly fluctuate month to month, with particularly notable decreases in December due to the bank holidays. If the data is adjusted to show activity per working day, the monthly variation becomes less pronounced (Chart 5).
- 3.4.2. The underlying trend showed an increase from January 2006 to the COVID-19 period when total activity in April 2020 fell by 68% compared to April 2019. Monthly activity subsequently started to rise again.

**Chart 5: Total activity and working day adjusted activity per month for all tests  
January 2006 to December 2024**



Note: Activity data was not collected in May 2006 and all activity time series graphs will show missing values for that month

3.4.3. In the previous 12 months, individual tests have shown differing changes in activity. The test with the largest proportional increase in activity was Sleep Studies, where December 2024 activity was 2.2% higher per month than December 2023 (Table 1).

**Table 1: Total activity, by test – December 2023 and December 2024**

	Dec-23	Dec-24	Average monthly growth
MRI	348,211	377,053	0.7%
CT	662,538	711,942	0.6%
Non-obstetric Ultrasound	631,106	658,915	0.4%
Barium Enema	3,123	3,435	0.8%
Dexa Scan	39,170	41,599	0.5%
Audiology Assessments	89,664	100,858	1.0%
Echocardiography	138,110	153,468	0.9%
Electrophysiology	560	410	-2.6%
Peripheral Neurophysiology	16,804	19,077	1.1%
Sleep Studies	12,500	16,262	2.2%
Urodynamics	4,954	5,515	0.9%
Colonoscopy	49,557	50,696	0.2%
Flexi Sigmoidoscopy	14,963	14,939	0.0%
Cystoscopy	25,667	27,566	0.6%
Gastroscopy	55,238	59,200	0.6%
<b>All Tests</b>	<b>2,092,165</b>	<b>2,240,935</b>	<b>0.6%</b>

## 4 December 2024 Data

This section analyses the December 2024 diagnostic waiting times and activity data and includes comparisons between tests, regions, providers and commissioners.

### 4.1 6+ Week Waits

- 4.1.1. At the end of December 2024, there were a total of 355,900 patients waiting six weeks or more from referral for one of the 15 key diagnostic tests. This was 22.8% of the total number of patients waiting at the end of the month.
- 4.1.2. Compared with December 2023, the number of patients waiting six weeks or more decreased by 61,200, while the proportion of patients waiting six weeks or more decreased by 4.0 percentage points.
- 4.1.3. Compared with December 2023, the test with the largest increase in the proportion of patients waiting six weeks or more was Barium Enema, which increased by 6.6 percentage points. The test with the largest decrease was Flexi Sigmoidoscopy, which decreased by 13.0 percentage points (Table 2).

**Table 2: Proportion of patients waiting 6+ weeks, by test – December 2023 and December 2024**

	Dec-23	Dec-24	Difference (%age points)
MRI	20.4%	18.9%	-1.5
CT	17.3%	9.8%	-7.5
Non-obstetric Ultrasound	22.2%	19.7%	-2.5
Barium Enema	8.3%	15.0%	6.6
Dexa Scan	30.3%	20.8%	-9.6
Audiology Assessments	45.5%	45.7%	0.2
Echocardiography	36.3%	30.1%	-6.2
Electrophysiology	24.7%	22.0%	-2.8
Peripheral Neurophysiology	29.5%	34.2%	4.7
Sleep Studies	41.0%	35.4%	-5.6
Urodynamics	43.5%	43.4%	-0.1
Colonoscopy	36.6%	28.1%	-8.4
Flexi Sigmoidoscopy	40.9%	28.0%	-13.0
Cystoscopy	34.7%	27.8%	-6.9
Gastroscopy	31.5%	25.0%	-6.5
<b>All Tests</b>	<b>26.8%</b>	<b>22.8%</b>	<b>-4.0</b>

Note: Figures may differ due to rounding.

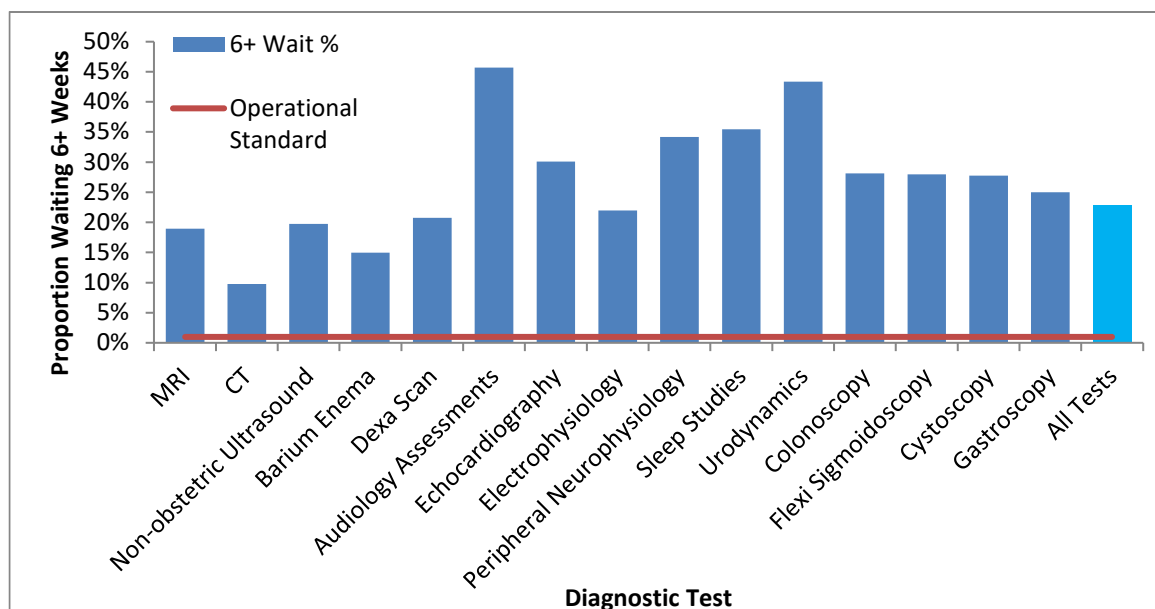
- 4.1.4. Compared with December 2023, the test type with the smallest change in the proportion of patients waiting six weeks or more was Physiological Measurement with a decrease of 2.7 percentage points. Imaging decreased by 3.3 percentage points, while Endoscopy decreased by 8.3 percentage points (Table 3). See section 5.4 for which tests are included under the different test types.

**Table 3: Proportion of patients waiting 6+ weeks, by test type – December 2023 and December 2024**

	Dec-23	Dec-24	Difference (%age points)
Imaging	21.3%	18.0%	-3.3
Physiological Measurement	39.1%	36.4%	-2.7
Endoscopy	35.2%	26.9%	-8.3
<b>Total</b>	<b>26.8%</b>	<b>22.8%</b>	<b>-4.0</b>

Note: Figures may differ due to rounding.

- 4.1.5. The operational standard that less than 1% of patients should wait six weeks or more from referral for a diagnostic test was met in none of the 15 key tests this month. The test with the lowest proportion of patients waiting six weeks or more was CT (9.8%), whilst the test with the highest proportion was Audiology Assessments (45.7%) (Chart 6).

**Chart 6: Percentage of patients waiting 6+ weeks, by test – December 2024**

- 4.1.6. 128 of the 134 acute trusts that submitted data for December 2024 failed to meet the 1% operational standard.
- 4.1.7. All 42 Commissioners (ICBs) failed to meet the 1% operational standard.
- 4.1.8. None of the seven NHS England Regions met the 1% operational standard. The proportion of patients waiting six weeks or more for a diagnostic test varied by region between 17.3% (Northwest region) and 32.6% (East of England) (Table 4).
- 4.1.9. Feedback from NHS trusts has indicated that variations can exist between different regions due to a variety of reasons, from machines breaking down to staff shortages in trusts that usually only affect one region.

**Table 4: December 2024 Diagnostic Waiting Times and Activity by Regional Team\***

Region	Number of patients waiting six weeks or more at month end	Percentage of patients waiting six weeks or more at month end	Total number of patients waiting at month end	Total activity undertaken in month	Median waiting time
London	58,227	21.1%	275,560	378,819	3.2
South West	34,622	23.2%	149,147	214,292	3.3
South East	48,948	21.8%	224,499	336,299	3.1
Midlands	76,168	25.3%	301,565	425,771	3.4
East of England	64,621	32.6%	197,942	254,284	3.9
North West	32,824	17.3%	190,222	290,397	3.0
North East and Yorkshire	39,730	18.1%	219,087	332,355	3.0
<b>England</b>	<b>355,898</b>	<b>22.8%</b>	<b>1,562,340</b>	<b>2,232,217</b>	<b>3.2</b>

\*Includes all independent sector providers and excludes centrally commissioned.

## 4.2 Total Waiting List

4.2.1. At the end of December 2024 there were a total of 1,562,300 patients still waiting for a diagnostic test. This is an increase of 7,000 (0.5%) from December 2023.

4.2.2. The test with the largest waiting list was Non-obstetric Ultrasound, which accounted for 34.7% of the total waiting list, or 542,500 patients. The test with the smallest waiting list was Electrophysiology, which accounted for 0.02% of the total waiting list, or 300 patients (Table 5).

**Table 5: Total number of patients waiting at month end, by test – December 2023 and December 2024**

	Dec-23	Dec-24	Growth (%age)
MRI	287,690	300,930	4.6%
CT	172,284	167,235	-2.9%
Non-obstetric Ultrasound	515,334	542,474	5.3%
Barium Enema	2,590	3,116	20.3%
Dexa Scan	56,829	54,977	-3.3%
Audiology Assessments	108,885	104,210	-4.3%
Echocardiography	160,920	145,032	-9.9%
Electrophysiology	756	328	-56.6%
Peripheral Neurophysiology	33,399	35,481	6.2%
Sleep Studies	28,562	29,345	2.7%
Urodynamics	8,693	9,534	9.7%
Colonoscopy	68,334	63,404	-7.2%
Flexi Sigmoidoscopy	25,145	21,350	-15.1%
Cystoscopy	25,471	23,007	-9.7%
Gastroscopy	60,430	61,917	2.5%
<b>All Tests</b>	<b>1,555,322</b>	<b>1,562,340</b>	<b>0.5%</b>

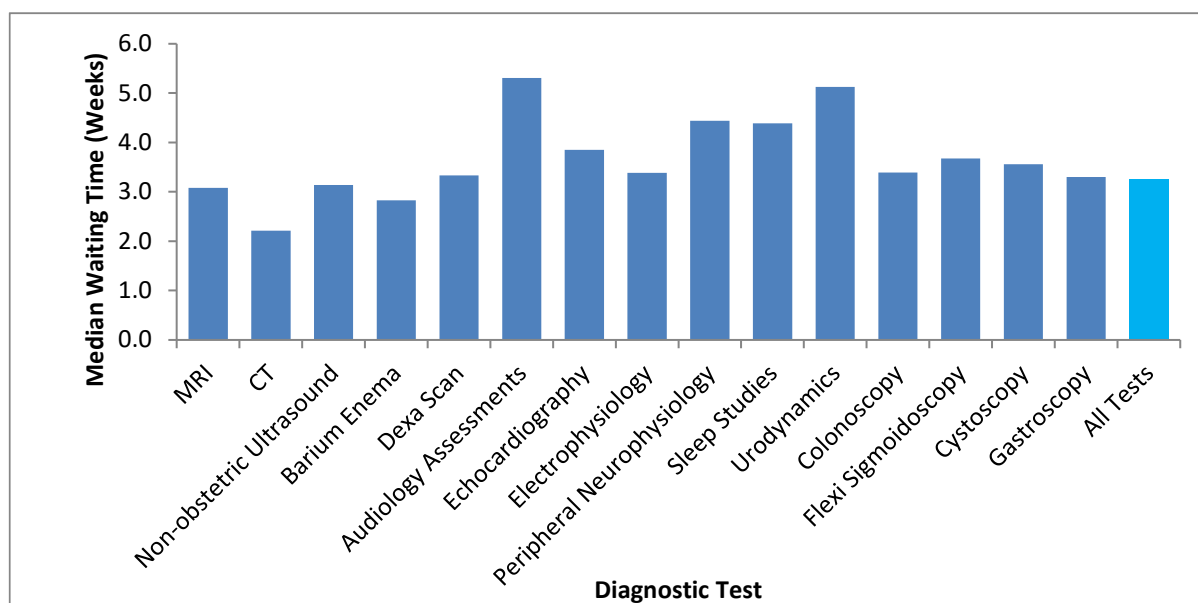
Note: Barium Enema is a test that should be replaced by Colonoscopy or CT Colonography, so the number of tests undertaken should be reducing.

- 4.2.3. The largest proportional increase in the number of patients waiting by test has been for Barium Enema where the reported waiting list grew by 20.3% compared with December 2023.

### 4.3 Median Waiting Times

- 4.3.1. At the end of December 2024, the estimated median waiting time for all 15 diagnostic tests was 3.2 weeks from the time of referral, up from 2.6 in the previous month. The test with the shortest median waiting time was CT at 2.2 weeks. The test with the longest median waiting time was Audiology Assessments at 5.3 weeks (Chart 7).

Chart 7: Median waiting time by test – December 2024



### 4.4 Total Activity

- 4.4.1. In total 2,240,900 of the 15 key diagnostic tests were performed during December 2024. This is an increase of 149,000 (7.1%) from December 2023, 1.8% when adjusted for working days (Table 6).
- 4.4.2. The test with the highest activity was CT with 711,900 tests taking place. This accounted for 31.8% of all activity in December 2024. The test with the lowest activity was Electrophysiology with 400 tests taking place. This accounted for 0.02% of all activity this month.
- 4.4.3. The number of tests conducted over the last 12 months has increased by 7.3% from the same period last year, 6.4% when adjusted for working days.

## Accredited Official Statistics

**Table 6: Total activity and growth, by test – December 2023 and December 2024**

Note: Barium Enema is a test that should be replaced by Colonoscopy or CT Colonography, so the number of tests undertaken should be reducing.

	Dec-24	Dec-23	YTD 24/25	YTD 23/24	Growth Dec 24 vs Dec 23	Growth YTD 24/25 vs YTD 23/24	Adjusted Growth Dec 24 vs Dec 23	Adjusted Growth YTD 24/25 vs YTD 23/24
MRI	377,053	348,211	3,541,257	3,234,712	8.3%	9.5%	2.9%	7.2%
CT	711,942	662,538	6,531,499	6,087,809	7.5%	7.3%	2.1%	5.0%
Non-obstetric Ultrasound	658,915	631,106	6,529,008	6,162,744	4.4%	5.9%	-0.8%	3.7%
Barium Enema	3,435	3,123	39,262	29,238	10.0%	34.3%	4.5%	31.5%
Dexa Scan	41,599	39,170	434,284	400,863	6.2%	8.3%	0.9%	6.1%
Audiology Assessments	100,858	89,664	1,009,471	845,457	12.5%	19.4%	6.9%	16.9%
Echocardiography	153,468	138,110	1,485,136	1,349,466	11.1%	10.1%	5.6%	7.7%
Electrophysiology	410	560	6,388	5,336	-26.8%	19.7%	-30.4%	17.2%
Peripheral Neurophysiology	19,077	16,804	191,989	177,649	13.5%	8.1%	7.9%	5.8%
Sleep Studies	16,262	12,500	168,180	128,986	30.1%	30.4%	23.6%	27.7%
Urodynamics	5,515	4,954	56,164	49,207	11.3%	14.1%	5.8%	11.7%
Colonoscopy	50,696	49,557	501,983	495,017	2.3%	1.4%	-2.8%	-0.7%
Flexi Sigmoidoscopy	14,939	14,963	148,152	152,181	-0.2%	-2.6%	-5.2%	-4.7%
Cystoscopy	27,566	25,667	275,573	251,875	7.4%	9.4%	2.0%	7.1%
Gastroscopy	59,200	55,238	581,505	544,528	7.2%	6.8%	1.8%	4.6%
<b>All Tests</b>	<b>2,240,935</b>	<b>2,092,165</b>	<b>21,499,851</b>	<b>19,915,068</b>	<b>7.1%</b>	<b>8.0%</b>	<b>1.8%</b>	<b>5.7%</b>

## 5 Community Diagnostic Centre December 2024 Data

This section analyses the December 2024 activity data for Community Diagnostic Centres (CDCs) and includes comparisons with the main December 2024 activity data. Activity data for CDCs includes all the activity they have performed in the month for 15 diagnostic tests (which comprise around half of the diagnostic tests they provide); no waiting list data is collected for CDCs. The CDC activity is also included in the main activity report, since that covers diagnostic tests in all settings, but is only identified as CDC activity in the separate tables.

### 5.1 CDC activity

5.1.1. In December 2024, CDCs performed 264,000 diagnostic tests, 11.8% of the total. The most common were imaging tests and the highest percentage of imaging tests by CDCs was for Magnetic Resonance Imaging (17.6%), see Table 7.

**Table 7: Total and CDC activity, by test – December 2024**

Test	All providers	CDCs	% by CDC
Magnetic Resonance Imaging	377,053	66,483	17.6%
Computed Tomography	711,942	83,816	11.8%
Non-obstetric Ultrasound	658,915	82,026	12.4%
Barium Enema	3,435	9	0.3%
DEXA Scan	41,599	6,401	15.4%
Audiology - Audiology Assessments	100,858	1,631	1.6%
Cardiology - Echocardiography	153,468	12,814	8.3%
Cardiology - Electrophysiology	410	622	151.7%
Neurophysiology - Peripheral Neurophysiology	19,077	216	1.1%
Respiratory physiology - Sleep Studies	16,262	2,737	16.8%
Urodynamics - Pressures & Flows	5,515	205	3.7%
Colonoscopy	50,696	2,999	5.9%
Flexi Sigmoidoscopy	14,939	847	5.7%
Cystoscopy	27,566	462	1.7%
Gastroscopy	59,200	2,775	4.7%
<b>All tests</b>	<b>2,240,935</b>	<b>264,043</b>	<b>11.8%</b>

CDC Electrophysiology activity erroneously includes other physiology test types

5.1.2. In December 2024, the region with the highest diagnostic activity in CDCs was the Midlands, with 53,400 tests (12.5% of their total). The region with the highest percentage of tests by CDCs, was the South West, with 31,100 tests (14.5% of their total), see Table 8.



Table 8: Total and CDC activity, by commissioning region – December 2024

Test	All providers	CDCs	% by CDC
London	378,819	39,526	10.4%
South West	214,292	31,127	14.5%
South East	336,299	46,480	13.8%
Midlands	425,771	53,421	12.5%
East of England	254,284	25,464	10.0%
North West	290,397	35,531	12.2%
North East and Yorkshire	332,355	31,789	9.6%
<b>England</b>	<b>2,240,935</b>	<b>264,043</b>	<b>11.8%</b>

## 5.2 CDC data completeness

5.2.1. In December 2024, 165 CDC sites were invited to submit activity data and 162 are included in the activity counts (98% response rate). The activity is CDC-funded and should exclude services that have moved to the CDC from existing sites, making it additional activity.

## 6 Annex

### 6.1 Methodology

5.1.1. NHS England compiles diagnostic waiting time and activity data through a central return. Data collected includes:

- The number of patients waiting at the month end, split by test and week.
- Total activity classified as either Waiting List tests (excluding planned), Planned tests, or Unscheduled tests.

5.1.2. Providers submit data to NHS England via SDCS where it is checked and signed off by commissioners. For further details on how the data is collected and the SDCS system, please refer to the [NHSE Collection Guidance](#).

### 6.2 Data Revisions

5.2.1. Revisions to published figures are released on a six-monthly basis and in accordance with the NHS England's revision policy. For more information on the revision policy please refer to the [SDCS Revisions Policy Document](#). Revisions were last published in December 2023 for the months January 2022 through to April 2023.

### 6.3 Data Availability

5.3.1. Monthly diagnostic waiting time and activity data is published on a monthly timetable. [A full calendar of all statistical publications can be found here.](#)

## 6.4 Glossary

### Community Diagnostic Centre

Community diagnostic centres (CDCs) provide a broad range of elective diagnostics (including checks, scans and tests) away from acute facilities, so reducing pressure on hospitals, providing quicker access to tests and greater convenience to patients. The earliest CDCs were started in 2021 and the list of sites and their services continues to expand. CDCs may use a range of spoke sites and submit aggregated activity data for them. They are hosted by acute Trusts but may receive patients from other Trusts.

### Endoscopy

A categorisation of diagnostic tests that include: Colonoscopy; Flexi Sigmoidoscopy; Cystoscopy and Gastroscopy.

### Imaging

A categorisation of diagnostic tests that include: Magnetic Resonance Imaging (MRI); Computed Tomography (CT); Non-obstetric Ultrasound; Barium Enema and DEXA Scan.

### Integrated Care Board (ICB)

Integrated care boards (ICBs) replaced clinical commissioning groups (CCGs) in the NHS in England from 1 April 2023. ICBs oversee partnerships of organisations that come together to plan and deliver joined up health and care services.

### Median Waiting Time

A measurement of the average time patients have been waiting for a diagnostic test. The median is the middle value when waiting times are put in numerical order. 50% of patients have been waiting less than the median. The median is the preferred measurement of average waiting time as it is less susceptible to extreme values than the mean.

### Physiological Measurement

A categorisation of diagnostic tests that include: Audiology Assessments; Echocardiology; Electrophysiology: Peripheral Neurophysiology; Sleep Studies and Urodynamics.

### Provider

An organisation that provides NHS treatment or care, for example, an NHS Acute Trust, Mental Health Trust, Community provider, or an Independent Sector organisation.

### Region

One of seven geographical areas of NHS England responsible for the quality, financial and operational performance of all NHS organisations in their region.

## 6.5 Feedback Welcomed

We welcome feedback on the content and presentation of statistics within this report and those published on the NHS England website.

If you have any comments on this, or any other issues regarding these statistics, then please email [england.diagnosticsdata@nhs.net](mailto:england.diagnosticsdata@nhs.net)

## 6.6 Consultation

Between 8 February 2018 and 5 April 2018, NHS England consulted on the future of the Quarterly Diagnostics Census and Monthly Diagnostics Waiting Times and Activity Returns. The outcome document for the consultation was published 30 March 2020 and confirmed the decision to stop collecting the Quarterly Diagnostics Census on a permanent basis and to continue the monthly diagnostics waiting times and activity return (DM01) in its current form. Find out more at:

<https://www.engage.england.nhs.uk/consultation/diagnostics-census-waiting-times-activity-return>

## 6.7 Additional Information

[Full details of diagnostics data for individual organisations are available here.](#)

For press enquiries please contact the NHS England media team on 0113 825 0958 or 0113 825 0959. Email enquiries should be directed to [nhsengland.media@nhs.net](mailto:nhsengland.media@nhs.net)

The NHS England analyst responsible for producing these data is:

Sheila Dixon  
Diagnostics, Operational Insights, NHS England  
Email: [england.diagnosticsdata@nhs.net](mailto:england.diagnosticsdata@nhs.net)