

NHS Diagnostic Waiting Times and Activity Data

NHS Diagnostic Waiting Times and Activity Data

July 2025 Monthly Report

Version number: 1.0

First published: 11th September 2025

Prepared by: Data and Analytics: Operational Insights - Diagnostics
NHS England

Contents

Contents	3
1 Executive summary	4
1.1 Accredited Official Statistics	5
2 July 2025 Key Findings	6
3 National Trends	7
3.1 6+ Week Waits	7
3.2 Total Waiting List.....	8
3.3 Median Waiting Time.....	9
3.4 Total Activity	9
4 July 2025 Data	11
4.1 6+ Week Waits	11
4.2 Total Waiting List.....	13
4.3 Median Waiting Times.....	14
4.4 Total Activity	14
5 Annex	16
5.1 Methodology.....	16
5.2 Data Revisions	16
5.3 Data Availability.....	16
5.4 Glossary	16
5.5 Feedback Welcomed.....	17
5.6 Consultation	17
5.7 Additional Information.....	17

1 Executive summary

This report presents a monthly summary of diagnostic waiting times and activity across the NHS in England. This monthly report is part of a routine series of publications produced by NHS England.

The data presented in this report measures the current waiting times of patients still waiting for any of 15 key diagnostic tests or procedures at the month end. This data is split by number of weeks waiting and by test. The waiting times reported are for those patients who have been referred for a test, but whose test had not taken place by the end of the reporting period. Referrals may be from a variety of sources including GPs.

One of the main measurements covered in this report is the number and proportion of patients waiting six weeks or more for a diagnostic test, from time of referral.

This six-week diagnostic wait was initially introduced as a ‘milestone’ from March 2008 towards achieving the standard Referral to Treatment wait of 18 weeks by December 2008, but diagnostic waiting times now form part of the NHS Constitution. This gives patients the legal right to treatment within 18 weeks of referral (18 week RTT) and as part of this, pledges that patients should not be required to wait six weeks or more for a diagnostic test.

There is a standard threshold of 1% for this pledge. The NHS Standard Contract 2025/26 seeks progress towards an interim threshold of at most 5%.

The 15 key diagnostic tests included in this report are:

Imaging

- Magnetic Resonance Imaging (MRI)
- Computerised Tomography (CT)
- Non-obstetric Ultrasound
- Barium Enema
- Dual-Energy X-Ray Absorptiometry (DEXA) Scan

Physiological Measurements

- Audiology Assessments
- Echocardiography
- Electrophysiology
- Neurophysiology – Peripheral Neurophysiology
- Respiratory Physiology – Sleep Studies
- Urodynamics – Pressures & Flows

Endoscopy

- Gastroscopy
- Colonoscopy
- Flexible Sigmoidoscopy
- Cystoscopy

For detailed descriptions of each diagnostic test please see the [collection guidance documentation](#).

Some of the key terms used throughout this report are outlined below:

- **6+ Week Waits**
A count of the number of patients waiting six weeks or more for a diagnostic test at month end from referral.
- **Activity**
A count of the number of diagnostic tests undertaken during the month.
- **Diagnostic Test**
A test or procedure of which the primary function is to identify a patient's disease or condition to allow a medical diagnosis to be made.
- **Waiting List**
A count of the number of patients that are waiting for a diagnostic test at the end of the month.

A more comprehensive glossary is available in the Annex.

All England figures quoted are commissioner based. Commissioner based returns reflect data for patients for whom English commissioners are responsible.

1.1 Accredited Official Statistics

The UK Statistics Authority has designated these statistics as Accredited Official Statistics, in accordance with the Statistics and Registration Service Act 2007 and signifying compliance with the Code of Practice for Accredited Official Statistics.

Designation can be broadly interpreted to mean that the statistics:

- meet identified user needs;
- are well explained and readily accessible;
- are produced according to sound methods; and
- are managed impartially and objectively in the public interest.

Once statistics have been designated as Accredited Official Statistics it is a statutory requirement that the Code of Practice shall continue to be observed.

2 July 2025 Key Findings

- The total number of patients waiting six weeks or more from referral for one of the 15 key diagnostic tests at the end of July 2025 was 378,800. This was 21.9% of the total number of patients waiting at the end of the month.
- Nationally, the operational standard of less than 1% of patients waiting six weeks or more was not met this month.
- Compared with July 2024 the total number of patients waiting six weeks or more increased by 15,000 while the proportion of patients waiting six weeks or more decreased by 0.5%.
- In the last 12 months, the proportion of patients waiting six weeks or more at the end of a month has varied between 17.5% (February 2025) and 24.0% (August 2024).
- At the end of July 2025, the test with the smallest proportion of patients waiting six weeks or more was CT with 11.0%. The test with the highest proportion was Electrophysiology, with 58.2% of patients waiting six weeks or more.
- An alternative measure of diagnostic waiting times is the average (median) waiting time. The estimated average time that a patient had been waiting for a diagnostic test was 2.9 weeks at the end of July 2025.
- There were 1,730,900 patients waiting for a key diagnostic test at the end of July 2025. This is an increase of 103,600 from July 2024.
- A total of 2,608,700 diagnostic tests were undertaken in July 2025. This is an increase of 98,500 from July 2024.

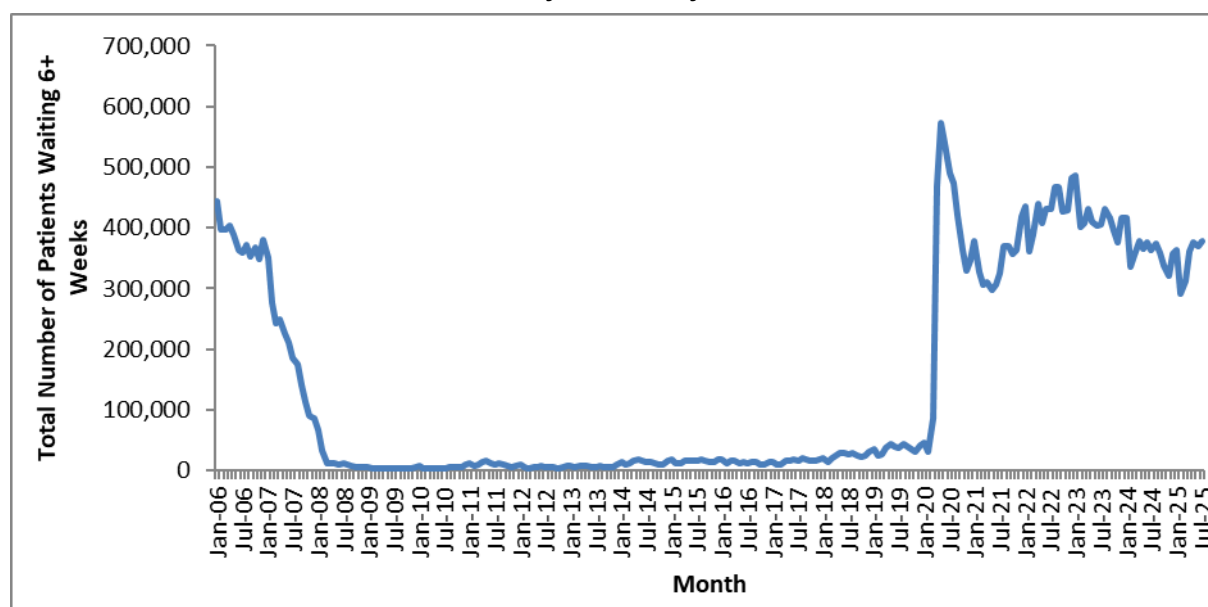
3 National Trends

This section analyses trends in monthly diagnostic waiting times and activity data that has been collected since January 2006.

3.1 6+ Week Waits

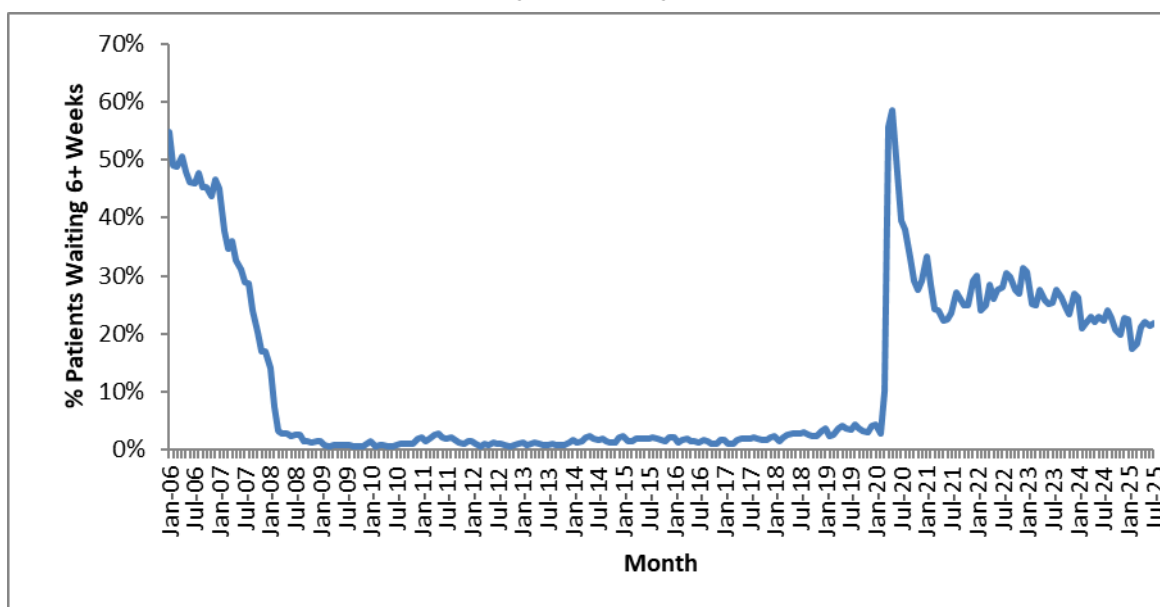
- 3.1.1. The total number of patients waiting six weeks or more dropped sharply between January 2007 and March 2008 (Chart 1), as Trusts worked towards the NHS Improvement Plan (June 2004) milestone that no one should wait six weeks or more for a diagnostic test by March 2008. Subsequent fluctuations in the total number of patients waiting six weeks or more led to a gradual increase until it rose sharply in April 2020 due to the impact of COVID-19.
- 3.1.2. In July 2025 there was an increase of 9,300 in the number of patients waiting six weeks or more from the previous month.

**Chart 1: Total number of patients waiting 6+ weeks at month end for all tests
January 2006 to July 2025**



- 3.1.3. The proportion of patients waiting six weeks or more shows a similar pattern (Chart 2). In the last 12 months, the proportion of patients waiting six weeks or more at the end of a month has varied between 17.5% (February 2025) and 24.0% (August 2024). The 1% operational standard was last met in November 2013.

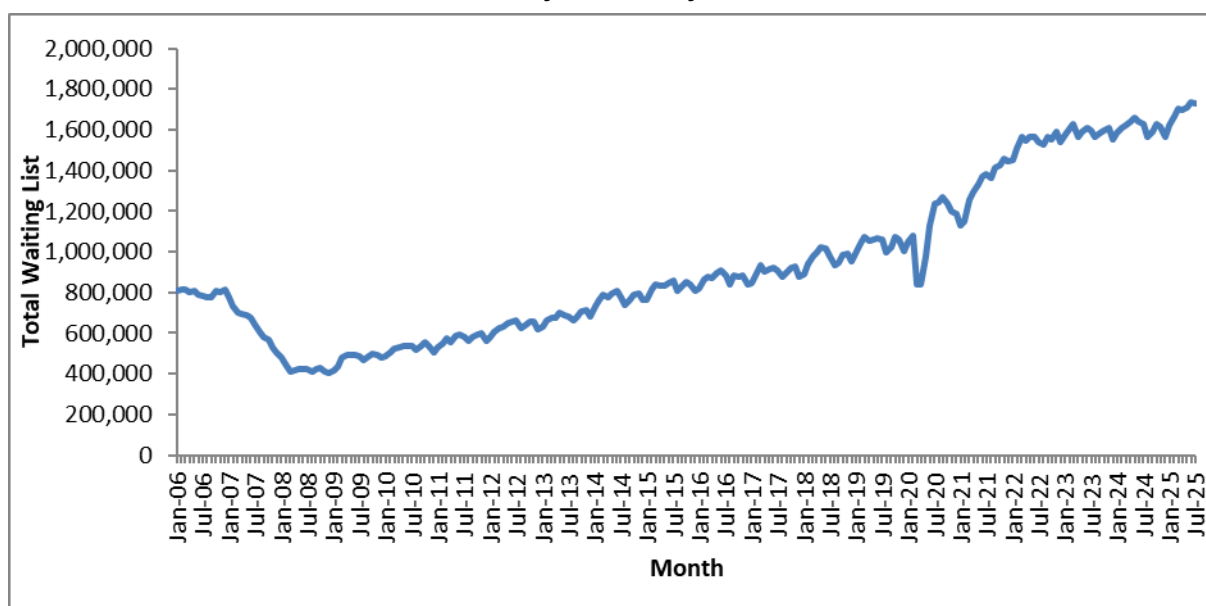
**Chart 2: Percentage of patients waiting 6+ weeks at month end for all tests
January 2006 to July 2025**



3.2 Total Waiting List

- 3.2.1. As with the number and proportion of patients waiting six weeks or more, the total number of patients waiting at the month end fell between January 2007 and the 6-week milestone in March 2008 (Chart 3), remaining static for some months. The underlying trend then showed a steady increase before dropping sharply in March 2020 due to the impact of COVID-19 and subsequently rising again.

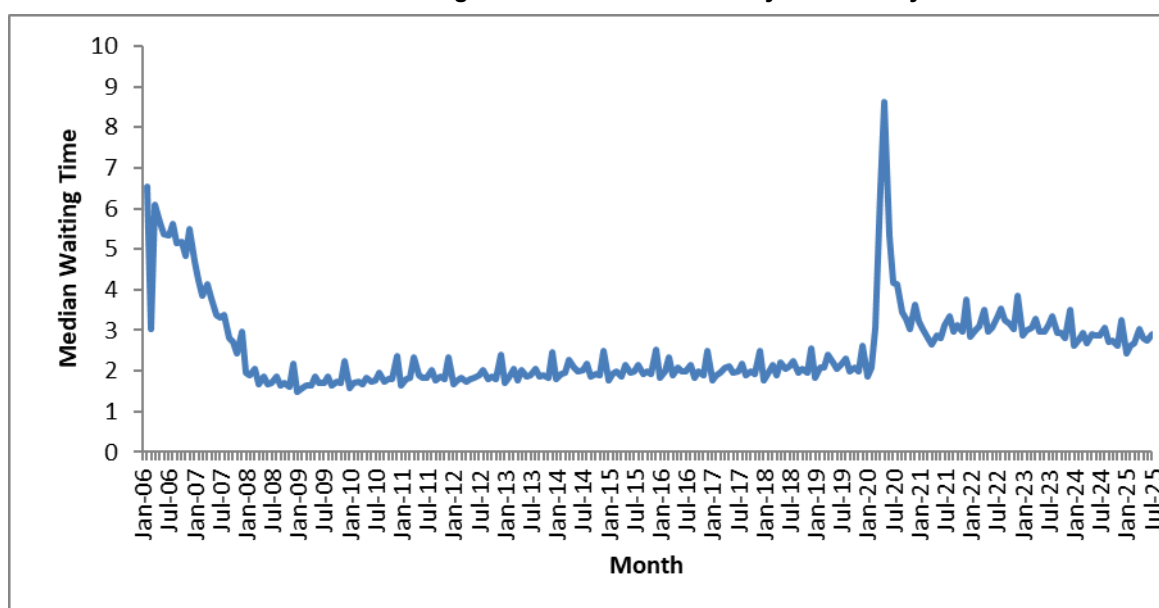
**Chart 3: Total number of patients waiting at month end for all tests
January 2006 to July 2025**



3.3 Median Waiting Time

- 3.3.1. The average (median) waiting time displays a similar trend to the total waiting list and 6 weeks or more waits. After a rapid decrease in the two years leading to the 6-week milestone, the median waiting time rose minimally until the COVID-19 period (Chart 4). The data shows significant increases during December every year as a result of the higher number of bank holidays and resulting lower activity. In the last 12 months, the median waiting time had a high of 3.2 weeks (December 2024) and a low of 2.4 weeks (January 2025). The median waiting time in July 2025 was 2.9 weeks.

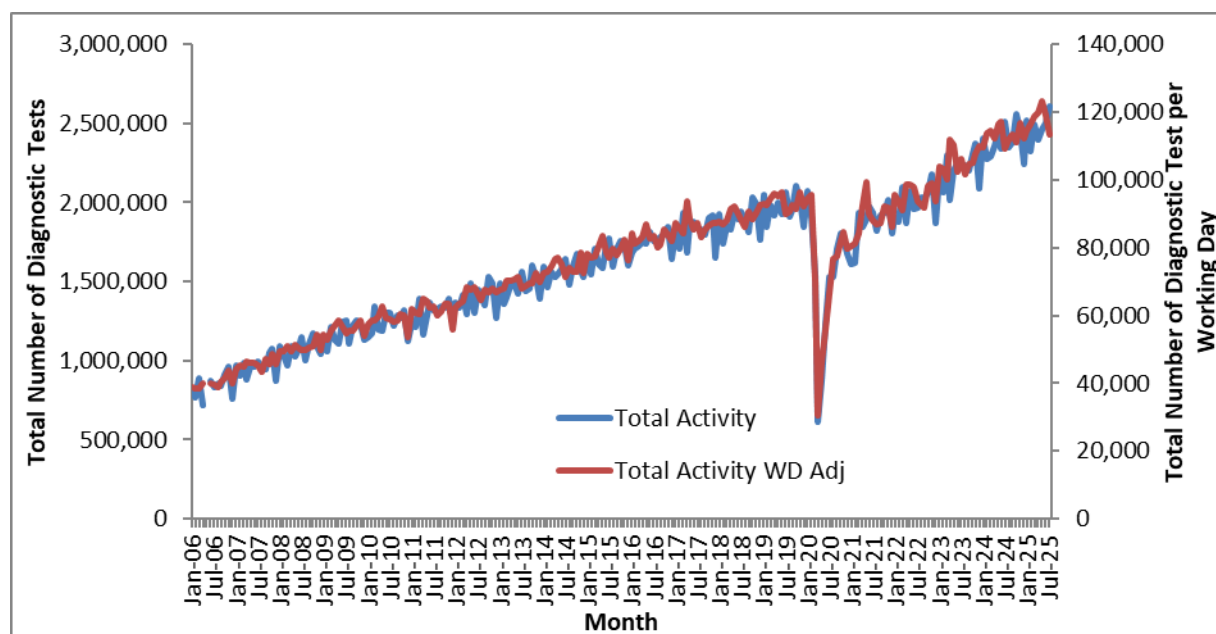
Chart 4: Median waiting time for all tests – January 2006 to July 2025



3.4 Total Activity

- 3.4.1. The monthly activity figure can significantly fluctuate month to month, with particularly notable decreases in December due to the bank holidays. If the data is adjusted to show activity per working day, the monthly variation becomes less pronounced (Chart 5).
- 3.4.2. The underlying trend showed an increase from January 2006 to the COVID-19 period when total activity in April 2020 fell by 68% compared to April 2019. Monthly activity subsequently started to rise again.

**Chart 5: Total activity and working day adjusted activity per month for all tests
January 2006 to July 2025**



Note: Activity data was not collected in May 2006 and all activity time series graphs will show missing values for that month

3.4.3. In the previous 12 months, individual tests have shown differing changes in activity. The test with the largest proportional increase in activity was Sleep Studies, where July 2025 activity was 1.4% higher per month than July 2024 (Table 1).

Table 1: Total activity, by test – July 2024 and July 2025

	Jul-24	Jul-25	Average monthly growth
MRI	405,505	429,000	0.5%
CT	749,450	791,919	0.5%
Non-obstetric Ultrasound	771,768	795,048	0.2%
Barium Enema	4,232	4,755	1.0%
Dexa Scan	52,285	53,517	0.2%
Audiology Assessments	117,839	132,060	1.0%
Echocardiography	175,889	181,762	0.3%
Electrophysiology	748	378	-5.5%
Peripheral Neuropsychology	22,557	23,030	0.2%
Sleep Studies	20,201	23,925	1.4%
Urodynamics	6,879	6,451	-0.5%
Colonoscopy	60,094	55,231	-0.7%
Flexi Sigmoidoscopy	17,870	15,111	-1.4%
Cystoscopy	34,134	31,998	-0.5%
Gastrosocopy	70,791	64,532	-0.8%
All Tests	2,510,242	2,608,717	0.3%

4 July 2025 Data

This section analyses the July 2025 diagnostic waiting times and activity data and includes comparisons between tests, regions, providers and commissioners.

4.1 6+ Week Waits

- 4.1.1. At the end of July 2025, there were a total of 378,800 patients waiting six weeks or more from referral for one of the 15 key diagnostic tests. This was 21.9% of the total number of patients waiting at the end of the month.
- 4.1.2. Compared with July 2024, the number of patients waiting six weeks or more increased by 15,000, while the proportion of patients waiting six weeks or more reduced by 0.5%.
- 4.1.3. Compared with July 2024, the test with the largest increase in the proportion of patients waiting six weeks or more was Electrophysiology, which increased by 9.1 percentage points. The test with the largest decrease was Dexa Scan, which decreased by 6.3 percentage points (Table 2).

Table 2: Proportion of patients waiting 6+ weeks, by test – July 2024 and July 2025

	Jul-24	Jul-25	Difference (%age points)
MRI	19.8%	16.8%	-3.1
CT	10.7%	11.0%	0.3
Non-obstetric Ultrasound	17.7%	19.1%	1.4
Barium Enema	11.4%	18.4%	7.0
Dexa Scan	19.9%	13.6%	-6.3
Audiology Assessments	45.4%	43.9%	-1.4
Echocardiography	32.3%	31.1%	-1.3
Electrophysiology	49.1%	58.2%	9.1
Peripheral Neurophysiology	31.0%	36.9%	5.9
Sleep Studies	32.8%	28.4%	-4.4
Urodynamics	41.4%	39.7%	-1.7
Colonoscopy	25.7%	27.4%	1.7
Flexi Sigmoidoscopy	32.0%	29.2%	-2.7
Cystoscopy	26.8%	27.0%	0.2
Gastroscopy	24.4%	25.5%	1.1
All Tests	22.4%	21.9%	-0.5

Note: Figures may differ due to rounding.

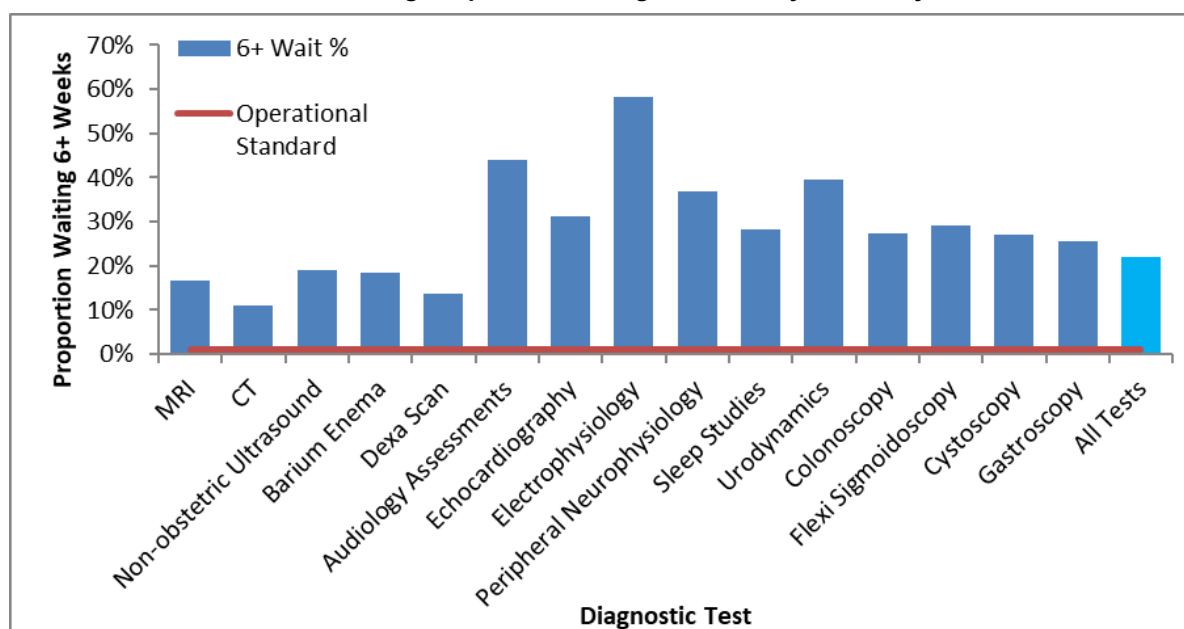
- 4.1.4. Compared with July 2024, the test type with the smallest change in the proportion of patients waiting six weeks or more was Imaging with a decrease of 0.3 percentage points. Physiological Measurement decreased by 0.7 percentage points and Endoscopy increased by 0.7 percentage points (Table 3). See section 5.4 for which tests are included under the different test types.

Table 3: Proportion of patients waiting 6+ weeks, by test type – July 2024 and July 2025

	Jul-24	Jul-25	Difference (%age points)
Imaging	17.3%	17.0%	-0.3
Physiological Measurement	36.8%	36.1%	-0.7
Endoscopy	26.2%	26.9%	0.7
Total	22.4%	21.9%	-0.5

Note: Figures may differ due to rounding.

- 4.1.5. The operational standard that less than 1% of patients should wait six weeks or more from referral for a diagnostic test was met in none of the 15 key tests this month. The test with the lowest proportion of patients waiting six weeks or more was CT (11.0%), whilst the test with the highest proportion was Electrophysiology (58.2%) (Chart 6).

Chart 6: Percentage of patients waiting 6+ weeks, by test – July 2025

- 4.1.6. 123 of the 132 acute trusts that submitted data for July 2025 failed to meet the 1% operational standard.
- 4.1.7. All 42 Commissioners (ICBs) failed to meet the 1% operational standard.
- 4.1.8. None of the seven NHS England Regions met the 1% operational standard. The proportion of patients waiting six weeks or more for a diagnostic test varied by region between 15.3% (Northwest region) and 29.8% (East of England) (Table 4).
- 4.1.9. Feedback from NHS trusts has indicated that variations can exist between different regions due to a variety of reasons, from machines breaking down to staff shortages in trusts that usually only affect one region.

Table 4: July 2025 Diagnostic Waiting Times and Activity by Regional Team*

Region	Number of patients waiting six weeks or more at month end	Percentage of patients waiting six weeks or more at month end	Total number of patients waiting at month end	Total activity undertaken in month	Median waiting time
London	67,166	21.3%	315,928	429,235	2.9
South West	33,412	21.7%	154,038	255,296	2.8
South East	50,820	20.3%	249,771	401,488	2.7
Midlands	83,899	24.8%	338,144	485,698	3.1
East of England	66,488	29.8%	222,934	296,119	3.5
North West	31,637	15.3%	206,631	356,171	2.6
North East and Yorkshire	44,489	18.7%	238,125	372,900	2.8
England	377,911	21.9%	1,725,571	2,596,907	2.9

*Includes all independent sector providers and excludes centrally commissioned.

4.2 Total Waiting List

4.2.1. At the end of July 2025 there were a total of 1,730,900 patients still waiting for a diagnostic test. This is an increase of 103,600 (6.4%) from July 2024.

4.2.2. The test with the largest waiting list was Non-obstetric Ultrasound, which accounted for 36.2% of the total waiting list, or 626,100 patients. The test with the smallest waiting list was Electrophysiology, which accounted for 0.01% of the total waiting list, or 200 patients (Table 5).

Table 5: Total number of patients waiting at month end, by test – July 2024 and July 2025

	Jul-24	Jul-25	Growth (%age)
MRI	317,938	337,704	6.2%
CT	169,904	173,635	2.2%
Non-obstetric Ultrasound	568,513	626,123	10.1%
Barium Enema	3,055	3,836	25.6%
Dexa Scan	57,781	56,674	-1.9%
Audiology Assessments	113,101	118,810	5.0%
Echocardiography	156,955	151,313	-3.6%
Electrophysiology	831	184	-77.9%
Peripheral Neurophysiology	36,679	38,448	4.8%
Sleep Studies	28,748	30,684	6.7%
Urodynamics	9,034	9,372	3.7%
Colonoscopy	61,199	68,488	11.9%
Flexi Sigmoidoscopy	21,519	22,912	6.5%
Cystoscopy	22,354	24,273	8.6%
Gastroscopy	59,698	68,477	14.7%
All Tests	1,627,309	1,730,933	6.4%

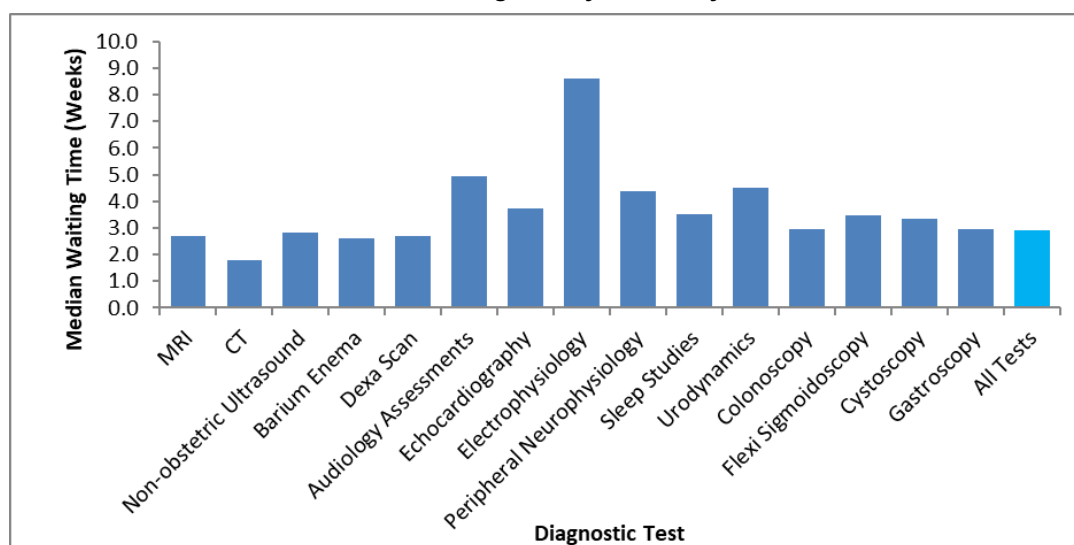
Note: Barium Enema is a test that should be replaced by Colonoscopy or CT Colonography, so the number of tests undertaken should be reducing.

- 4.2.3. The largest proportional increase in the number of patients waiting by test has been for Barium Enema where the reported waiting list grew by 25.6% compared with July 2024.

4.3 Median Waiting Times

- 4.3.1. At the end of July 2025, the estimated median waiting time for all 15 diagnostic tests was 2.9 weeks from the time of referral, up 0.1 from 2.8 in the previous month. The test with the shortest median waiting time was CT at 1.8 weeks. The test with the longest median waiting time was Electrophysiology at 8.6 weeks (Chart 7).

Chart 7: Median waiting time by test – July 2025



4.4 Total Activity

- 4.4.1. In total 2,608,700 of the 15 key diagnostic tests were performed during July 2025. This is an increase of 98,500 (3.9%) from July 2024, which remains 3.9% when adjusted for working days (Table 6).
- 4.4.2. The test with the highest activity was Non-obstetric Ultrasound with 795,000 tests taking place. This accounted for 30.5% of all activity in July 2025. The test with the lowest activity was Electrophysiology with 400 tests taking place. This accounted for 0.01% of all activity this month.
- 4.4.3. The number of tests conducted over the last 12 months has increased by 5.3% from the same period last year, which remains 5.3% when adjusted for working days.

Accredited Official Statistics

Table 6: Total activity and growth, by test – July 2024 and July 2025

Note: Barium Enema is a test that should be replaced by Colonoscopy or CT Colonography, so the number of tests undertaken should be reducing.

	Jul-25	Jul-24	YTD 25/26	YTD 24/25	Growth Jul 25 vs Jul 24	Growth YTD 25/26 vs YTD 24/25	Adjusted Growth Jul 25 vs Jul 24	Adjusted Growth YTD 25/26 vs YTD 24/25
MRI	429,000	405,505	1,670,888	1,569,376	5.8%	6.5%	5.8%	7.7%
CT	791,919	749,450	3,064,574	2,924,678	5.7%	4.8%	5.7%	6.0%
Non-obstetric Ultrasound	795,048	771,768	3,007,449	2,944,629	3.0%	2.1%	3.0%	3.3%
Barium Enema	4,755	4,232	17,242	16,280	12.4%	5.9%	12.4%	7.2%
Dexa Scan	53,517	52,285	201,926	197,501	2.4%	2.2%	2.4%	3.5%
Audiology Assessments	132,060	117,839	486,906	449,791	12.1%	8.3%	12.1%	9.5%
Echocardiography	181,762	175,889	680,290	663,584	3.3%	2.5%	3.3%	3.7%
Electrophysiology	378	748	888	2,682	-49.5%	-66.9%	-49.5%	-66.5%
Peripheral Neurophysiology	23,030	22,557	86,278	85,120	2.1%	1.4%	2.1%	2.6%
Sleep Studies	23,925	20,201	84,777	76,145	18.4%	11.3%	18.4%	12.7%
Urodynamics	6,451	6,879	24,246	26,044	-6.2%	-6.9%	-6.2%	-5.8%
Colonoscopy	55,231	60,094	214,755	232,370	-8.1%	-7.6%	-8.1%	-6.5%
Flexi Sigmoidoscopy	15,111	17,870	60,162	69,228	-15.4%	-13.1%	-15.4%	-12.1%
Cystoscopy	31,998	34,134	122,212	128,833	-6.3%	-5.1%	-6.3%	-4.0%
Gastroscopy	64,532	70,791	250,262	268,969	-8.8%	-7.0%	-8.8%	-5.8%
All Tests	2,608,717	2,510,242	9,972,855	9,655,230	3.9%	3.3%	3.9%	4.5%

5 Annex

5.1 Methodology

5.1.1. NHS England compiles diagnostic waiting time and activity data through a central return. Data collected includes:

- The number of patients waiting at the month end, split by test and week.
- Total activity classified as either Waiting List tests (excluding planned), Planned tests, or Unscheduled tests.

5.1.2. Providers submit data to NHS England via SDCS where it is checked and signed off by commissioners. For further details on how the data is collected and the SDCS system, please refer to the [NHSE Collection Guidance](#).

5.2 Data Revisions

5.2.1. Revisions to published figures are currently released on an annual basis and in accordance with the NHS England's revision policy. For more information on the revision policy please refer to the [SDCS Revisions Policy Document](#). Revisions were last published in July 2025 for the months January 2024 through to January 2025.

5.3 Data Availability

5.3.1. Monthly diagnostic waiting time and activity data is published on a monthly timetable. [A full calendar of all statistical publications can be found here](#).

5.4 Glossary

Community Diagnostic Centre

Community diagnostic centres (CDCs) provide a broad range of elective diagnostics (including checks, scans and tests) away from acute facilities, so reducing pressure on hospitals, providing quicker access to tests and greater convenience to patients. CDC activity is no longer collected separately in DM01, since the programme's management information is now published instead, but waits and activity for their patients is included in DM01 returns for the responsible or host Trust.

Endoscopy

A categorisation of diagnostic tests that include: Colonoscopy; Flexi Sigmoidoscopy; Cystoscopy and Gastroscopy.

Imaging

A categorisation of diagnostic tests that include: Magnetic Resonance Imaging (MRI); Computed Tomography (CT); Non-obstetric Ultrasound; Barium Enema and DEXA Scan.

Integrated Care Board (ICB)

Integrated care boards (ICBs) replaced clinical commissioning groups (CCGs) in the NHS in England from 1 April 2023. ICBs oversee partnerships of organisations that come together to plan and deliver joined up health and care services.

Median Waiting Time

A measurement of the average time patients have been waiting for a diagnostic test. The median is the middle value when waiting times are put in numerical order. 50% of patients have been waiting less than the median. The median is the preferred measurement of average waiting time as it is less susceptible to extreme values than the mean.

Physiological Measurement

A categorisation of diagnostic tests that include: Audiology Assessments; Echocardiology; Electrophysiology; Peripheral Neurophysiology; Sleep Studies and Urodynamics.

Provider

An organisation that provides NHS treatment or care, for example, an NHS Acute Trust, Mental Health Trust, Community provider or Independent Sector organisation.

Region

One of seven geographical areas of NHS England responsible for the quality, financial and operational performance of all NHS organisations in their region.

5.5 Feedback Welcomed

We welcome feedback on the content and presentation of statistics within this report and those published on the NHS England website.

If you have any comments on this, or any other issues regarding these statistics, then please email england.diagnosticsdata@nhs.net

5.6 Consultation

Between 8 February 2018 and 5 April 2018, NHS England consulted on the future of the Quarterly Diagnostics Census and Monthly Diagnostics Waiting Times and Activity Returns. The outcome document for the consultation was published 30 March 2020 and confirmed the decision to stop collecting the Quarterly Diagnostics Census on a permanent basis and to continue the monthly diagnostics waiting times and activity return (DM01) in its current form. Find out more at:

<https://www.engage.england.nhs.uk/consultation/diagnostics-census-waiting-times-activity-return>

5.7 Additional Information

[Full details of diagnostics data for individual organisations are available here.](#)

For press enquiries please contact the NHS England media team on 0113 825 0958 or 0113 825 0959. Email enquiries should be directed to nhsengland.media@nhs.net

The NHS England analyst responsible for producing these data is:

Sheila Dixon
Diagnostics, Operational Insights, NHS England
Email: england.diagnosticsdata@nhs.net