

# NHS Learning Disability Quality Checkers Project

## Project Description

Project website: <http://www.law.leeds.ac.uk/research/projects/>



This project looks at the way that people with learning disabilities (including Autism) are not treated equally in healthcare.



It builds on the user-led quality checking that is already happening across England.



It aims to make sure that quality checking looks at the things that matter to people with learning disabilities.



It also aims to help services to work in more inclusive and respectful ways.



This project involves co-design and co-working between disabled and non-disabled people.

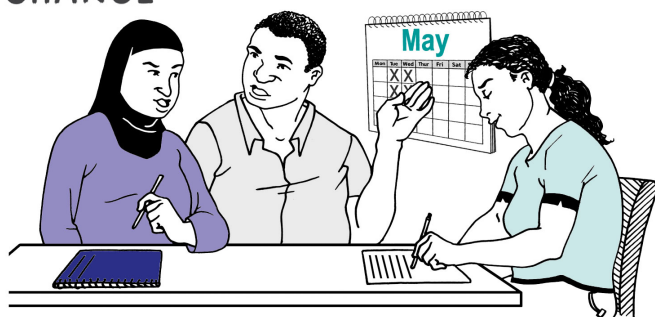


**UNIVERSITY OF LEEDS**

It is designed by the Centre for Disability Studies (University of Leeds) and CHANGE (a disabled people's organisation which focuses on equality and inclusion for people with learning disabilities).



Most of the research will be carried out by a researcher from the university and a researcher with learning disabilities at CHANGE.



Both researchers work part time as co-workers at CHANGE.

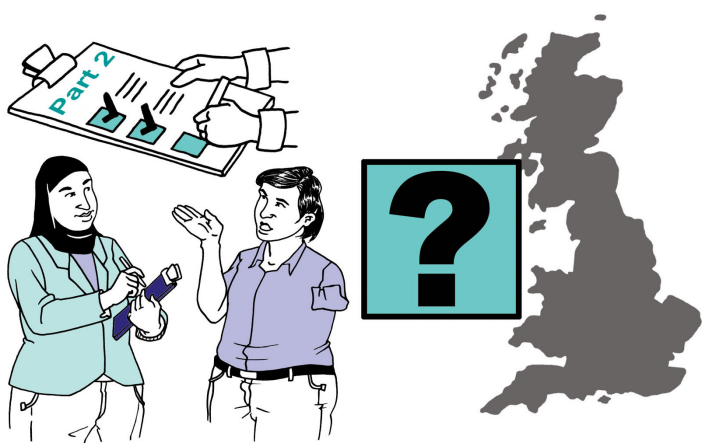
The University of Leeds also carried out some of its own research.

There will be two main parts to the research.

The first part looks at the user-led quality checking of health and social care services already taking place in England.



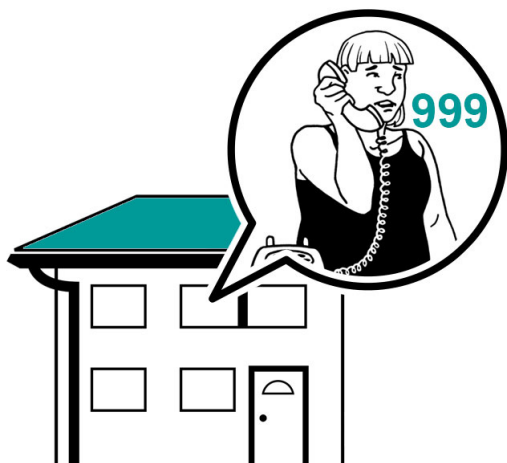
It looks at the good practice that we can learn from and build upon.



In the second part, we will be talking to and working with people with learning disabilities across the country.



Our aim is to design tools that could be used by quality checkers with learning disabilities for:



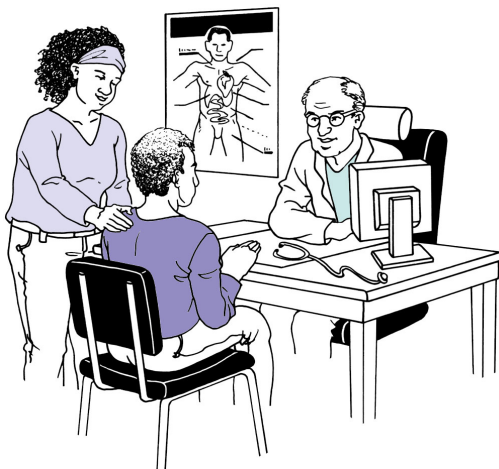
**1.** Emergency department services;



2. Community services;



3. Acute (short-term) hospitals services;



4. Doctor's services;



5. Dentistry services;



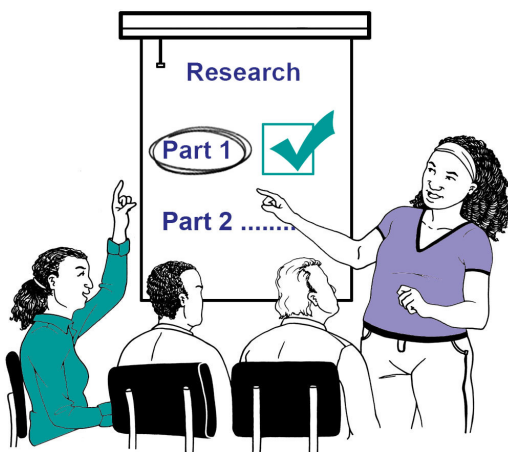


6. Mental health services;



7. Learning disability services.

## Summary of Phase 1



Phase 1 is the first part of this project, which has now ended.



The aim of Phase 1 was to look at, and learn from, the user-led quality checking of health and social care services in England by people with learning disabilities.



Our Phase 1 work is included in the four following reports:



**1.** Research carried out at the University of Leeds.



**2.** A report about three focus group discussions, plus telephone and face-to-face interviews.



**3.** A report that looks at all of the summary documents above. This report checks the 'standards' and 'indicators' used in learning disability user-led quality-checking in health and social care.

Organisation	User-led Quality Checking
change	Yes
.....	.....
.....	.....

4. A table of the learning disability organisations that do user-led quality-checking of health and social care services. Work on this table is still on-going, so it is not available yet.

## Contact Us

If you would like any more information, please contact:



## CHANGE

**Address:** Calls Landing, Fourth Floor, 36-38 The Calls, Leeds, West Yorkshire, LS2 7EW

**Tel:** 0113 242 6619

**Email:** [info@changepeople.org](mailto:info@changepeople.org)

This easy read document was produced by  
CHANGE  
[www.changepeople.org](http://www.changepeople.org)

