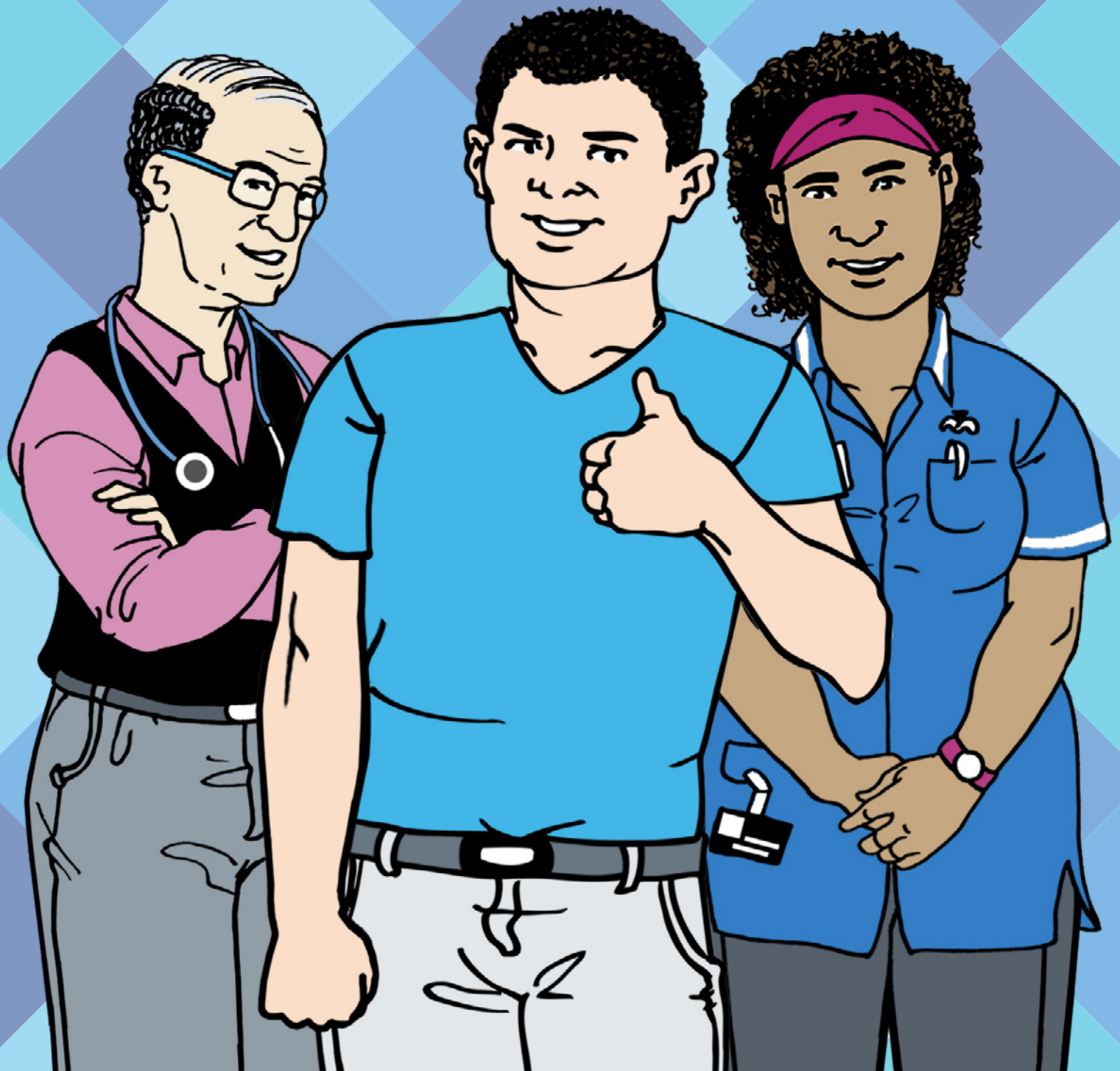


About the Integrated Care Provider contract

Easy read



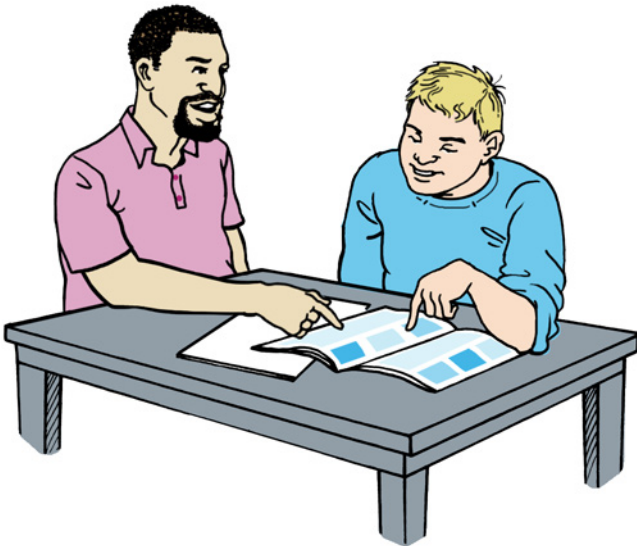
- 3 About this document
- 5 How we buy health and care services
- 8 How would an Integrated Care Provider work?
- 9 What is in the Integrated Care Provider contract?
- 12 Who can be an Integrated Care Provider?
- 15 How can Integrated Care Providers work with GPs?
- 16 Will there be lots of Integrated Care Providers?
- 18 Word bank



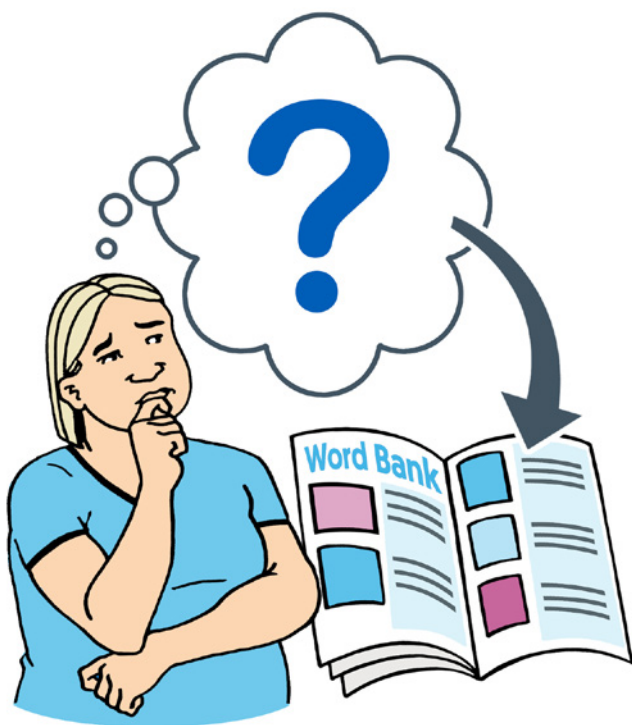
About this document



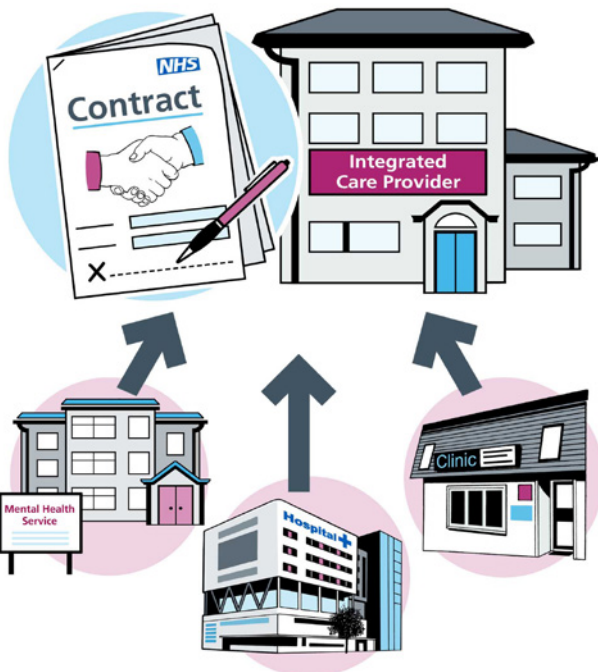
This document uses easy words and pictures.



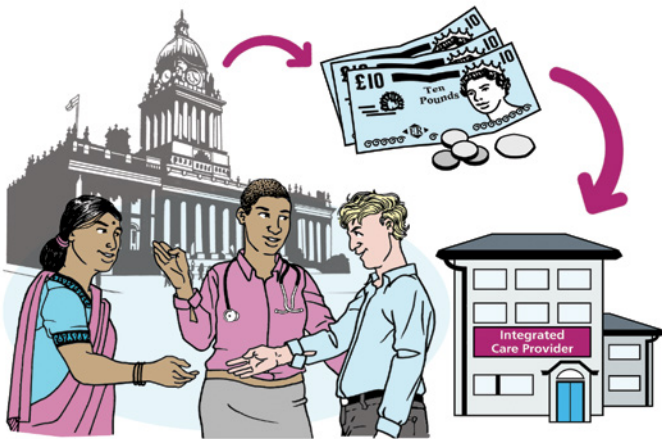
You might want to read through it with someone else to help you to understand it more.



There is a Word Bank at the back of the booklet to help with hard words. Any words in bold can be found in the Word Bank on page 18.



This document will tell you what an **Integrated Care Provider** is.



How the NHS and councils could buy services from an **Integrated Care Provider**.



How an **Integrated Care Provider** would work.



Why an **Integrated Care Provider** might be a good idea for some local areas.

How we buy health and care

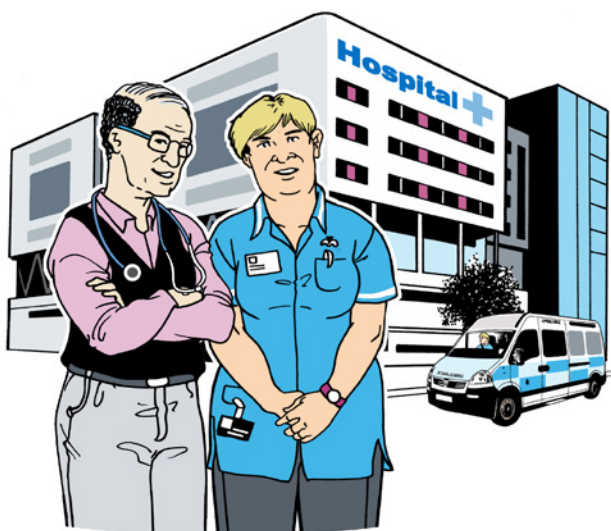


NHS

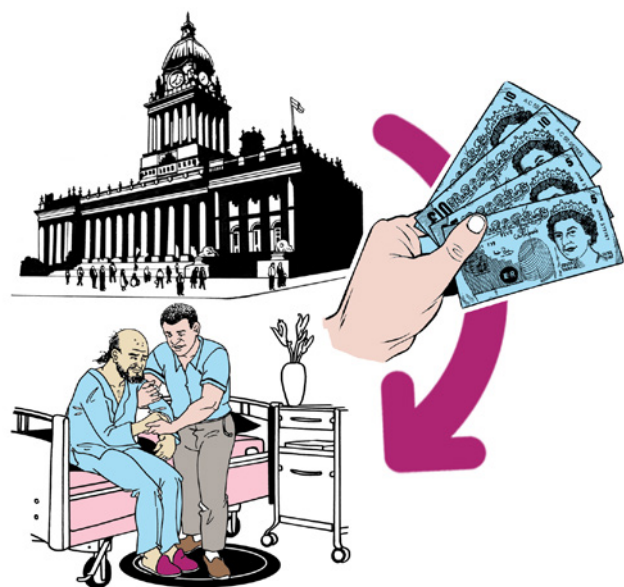
Across England there are lots of different providers that provide health and care services.



There are also organisations that buy health and care services for local people.

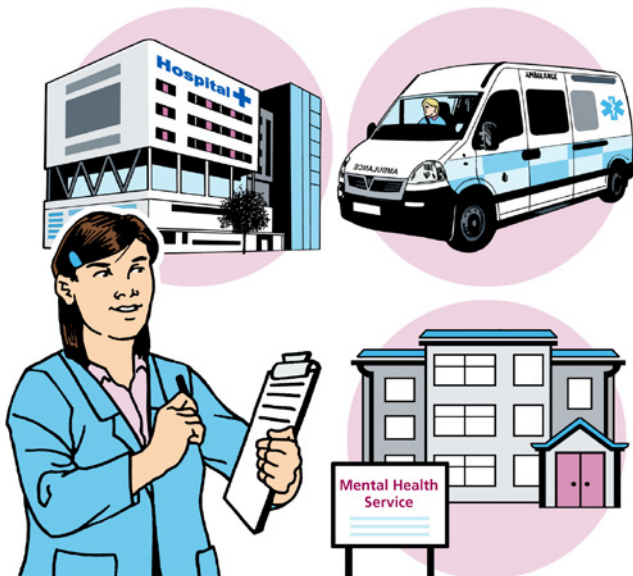


Councils buy care services for local people. Councils also provide some care services themselves.





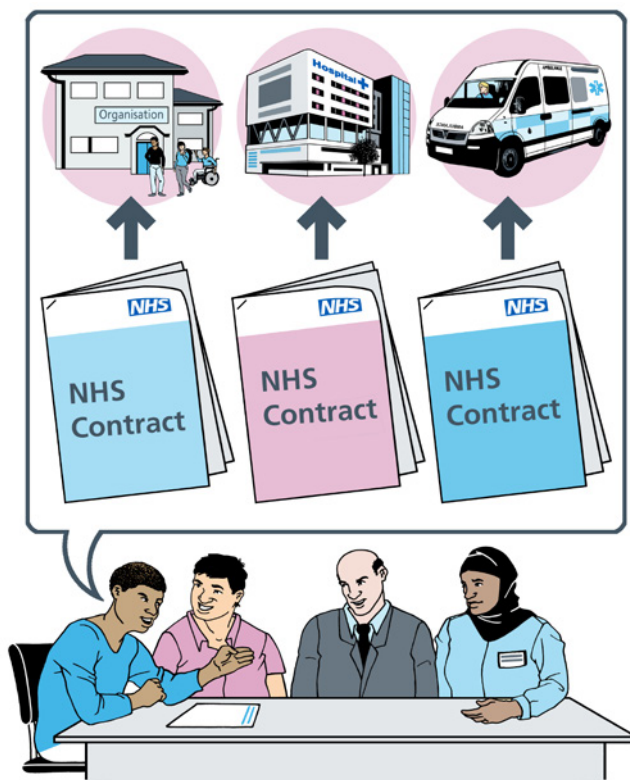
In the NHS the organisations that buy local health services are known as **Clinical Commissioning Groups**.



Clinical Commissioning Groups must make sure that lots of different health services are there for local people. For example ambulances and hospitals and mental health services.



When **Clinical Commissioning Groups** or councils buy health and care services they use a contract.



Clinical Commissioning Groups

and councils will have lots of different contracts with lots of different providers.



Some Clinical Commissioning Groups

and councils want to change this and use one contract to buy a lot of health and care services from one provider. This provider is known as an **Integrated Care Provider**.



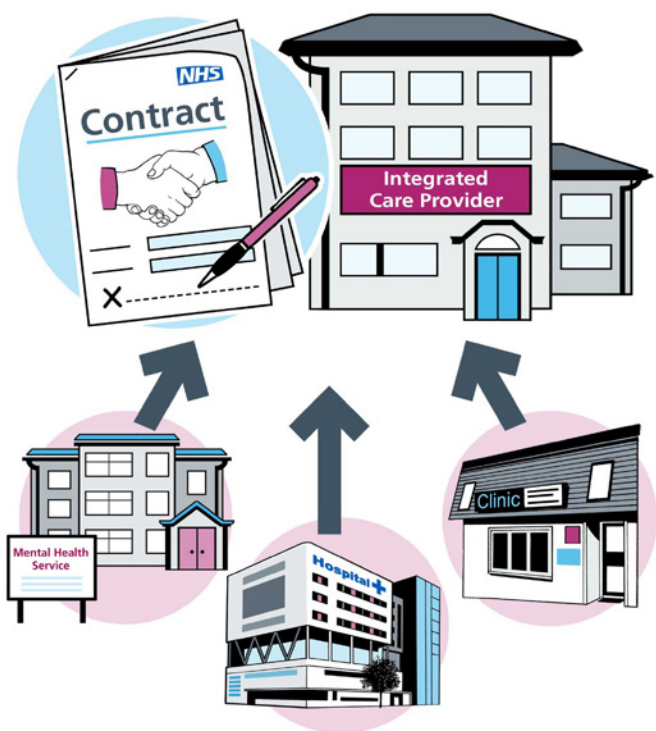
They believe having an Integrated

Care Provider in their area will make care more joined up and better for local people. Because they will have to think about all of the services each person needs.



NHS England has written a new contract that could be used to buy services from an **Integrated Care Provider**.

How would an Integrated Care Provider work?



An **Integrated Care Provider** could run **GP** services and other services you get close to your home. It could also run services at hospitals.



An **Integrated Care Provider** could also run care services that councils run now. For example help to get people out of bed and get dressed and washed.



An **Integrated Care Provider** could have a contract for a long time. For example 10 years.

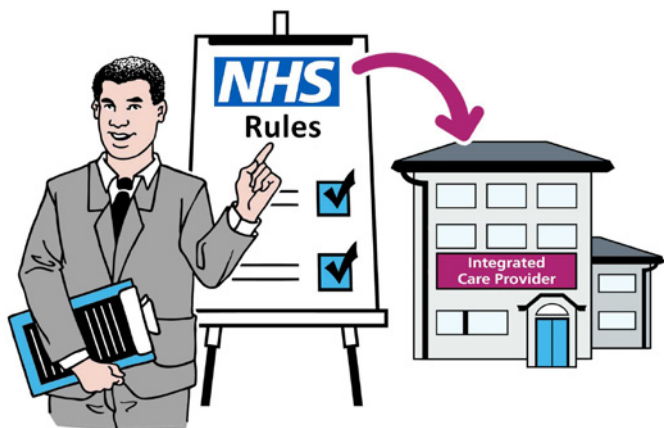


An **Integrated Care Provider** would have to talk to local people about how it provides health and care services.

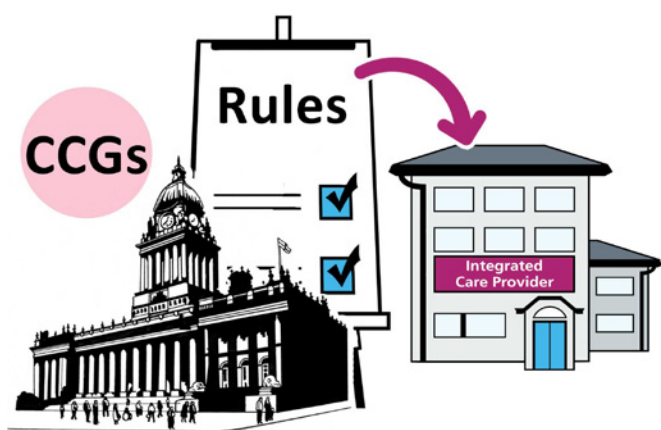
What is in the Integrated Care Provider contract?



The **Integrated Care Provider** contract is a set of rules about how an Integrated Care Provider must do its job.



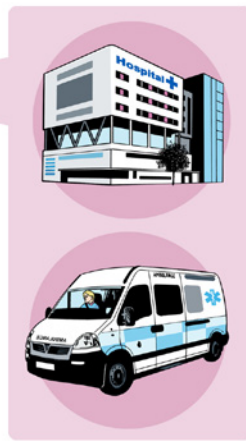
Some of those rules are set by NHS England.



Some are set locally by **Clinical Commissioning Groups** and councils.



The **Clinical Commissioning Groups** and the council will need to talk to local people about what they want from local services. For example:



- what services the **Integrated Care Provider** must provide



- how the **Integrated Care Provider** should make local people healthier and live better lives



- how much money they will pay the **Integrated Care Provider** each year

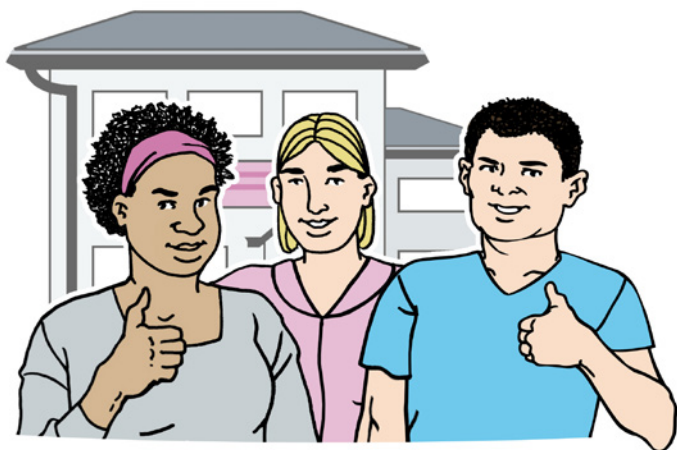


- how much extra money they might pay if everything works really well

Who can be an Integrated Care Provider?



Clinical Commissioning Groups and councils will decide who the **Integrated Care Provider** will be for their area.

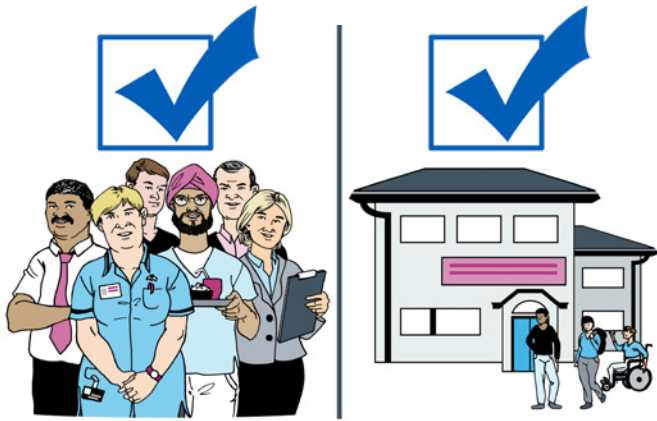


They must look for providers that:

- have experience of helping and caring for people



- can work well with other local services



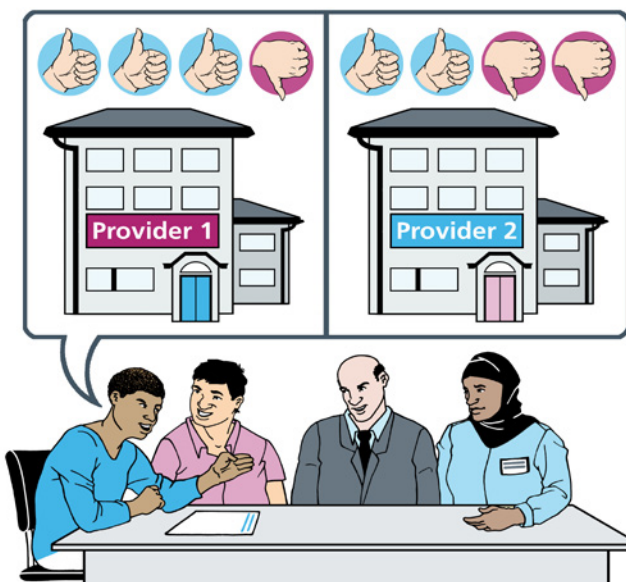
- have the right people and buildings to do the job



When a **Clinical Commissioning Group** and a council want an **Integrated Care Provider** they must tell everyone about it.



They must find the best provider to give the contract to.



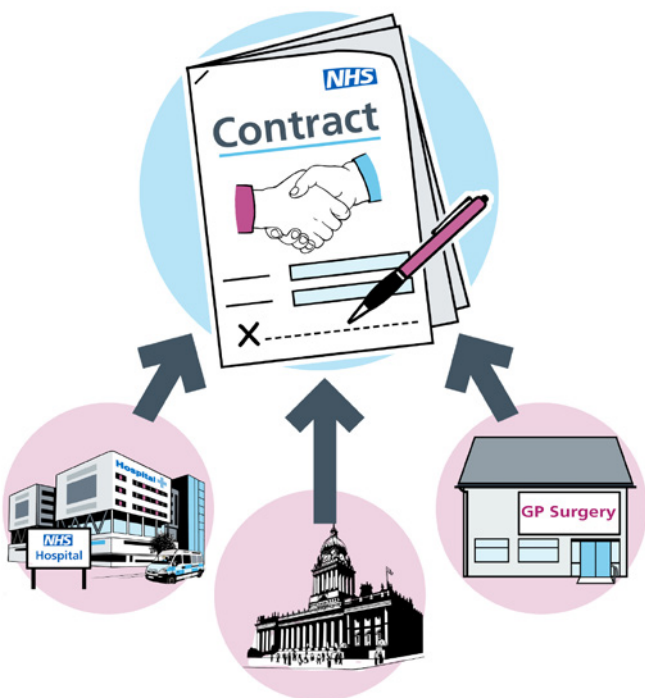
They might run a competition to find the best provider.



Health and care services in England can be run by the NHS or by other organisations. For example charities or independent businesses.



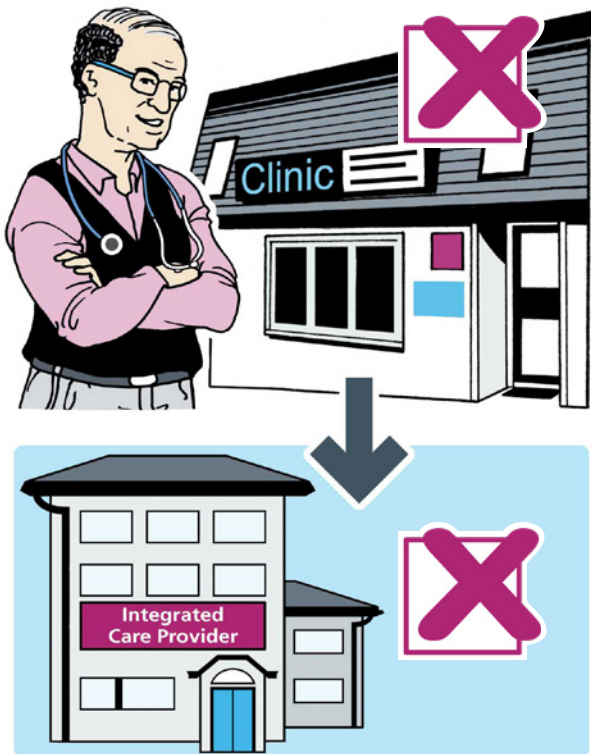
Most **GP** practices are independent businesses.



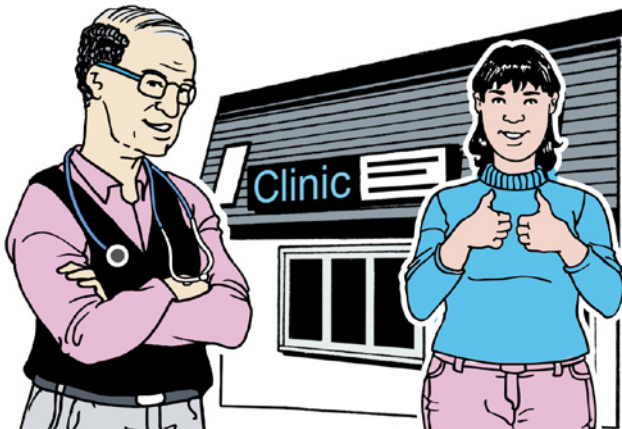
In the same way **Integrated Care Providers** could be NHS organisations or independent businesses set up by local GPs.

NHS England does not expect independent businesses to run **Integrated Care Providers**.

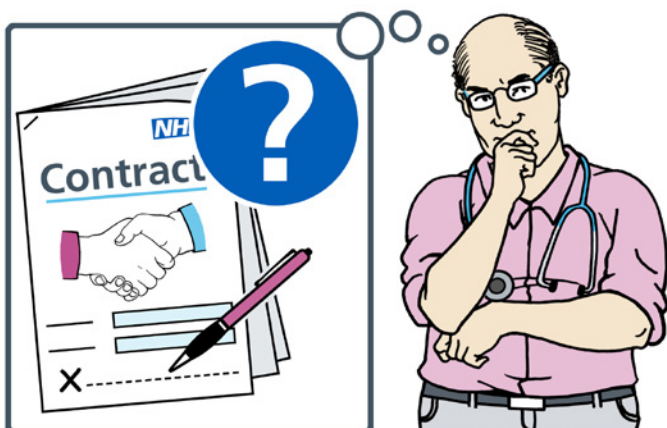
How can Integrated Care Providers work with GPs?



An **Integrated Care Provider** will not be able to join up health and care services if **GPs** are not involved.



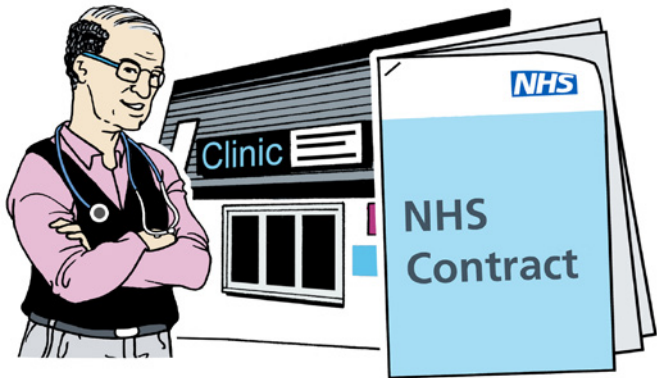
An **Integrated Care Provider** will mean people can still go to their own **GP**.



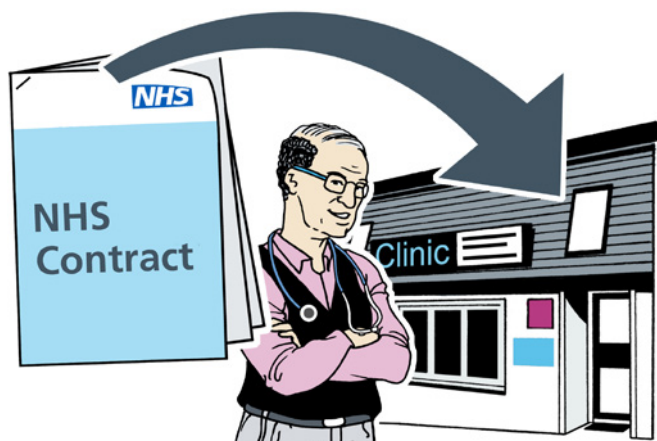
GPs can choose how they want to help an **Integrated Care Provider**.



Many **GPs** might choose to work closely with an **Integrated Care Provider**.



Some **GPs** might want to get a job with the **Integrated Care Provider**.

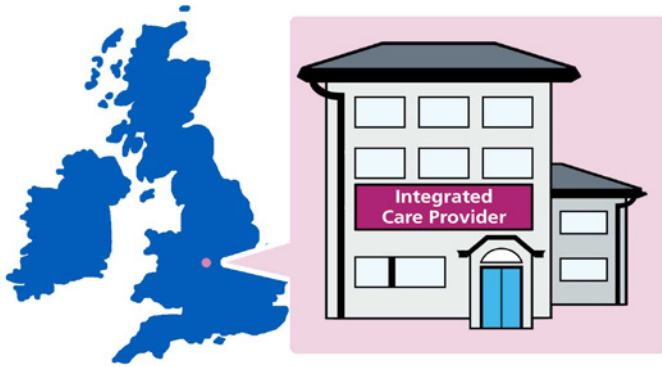


If a **GP** gets a job with an **Integrated Care Provider** they will be able return to their old contract with the NHS if things change.

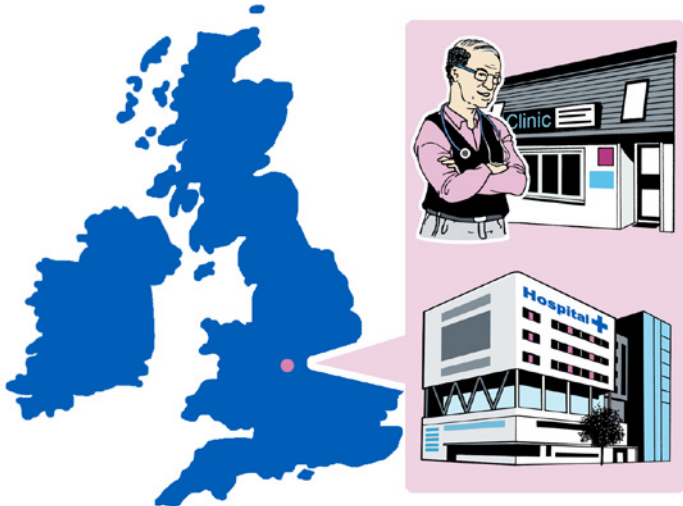
Will there be lots of Integrated Care Providers?



An **Integrated Care Provider** will not be right for every area.



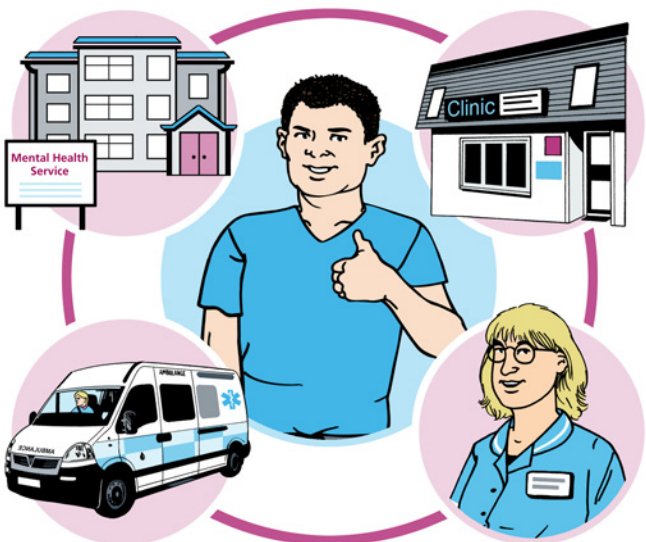
The first **Integrated Care Provider** might be in Dudley.



In Dudley we expect the **Integrated Care Provider** would be a local NHS provider working with local **GPs**.



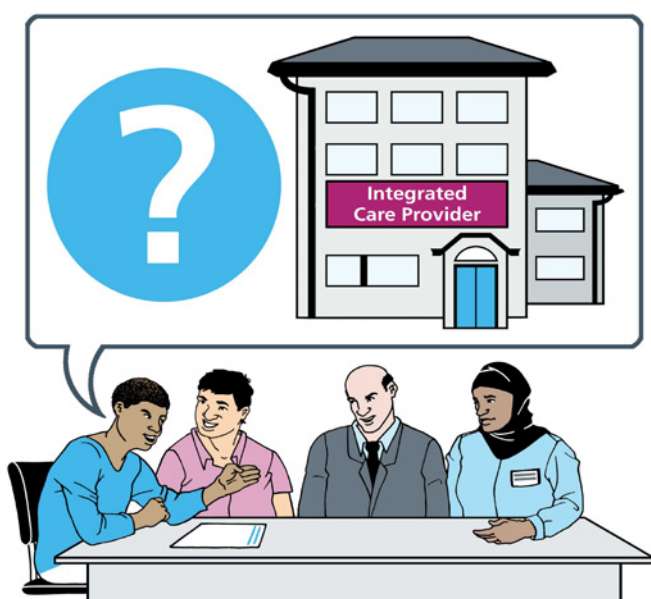
In many areas providers of health and care services are working together in other ways to make services better.



Most health and care services in England will still be provided by lots of different providers and bought using lots of different contracts.



A **Clinical Commissioning Group** will need to talk to local people about whether an **Integrated Care Provider** might be right for their area.



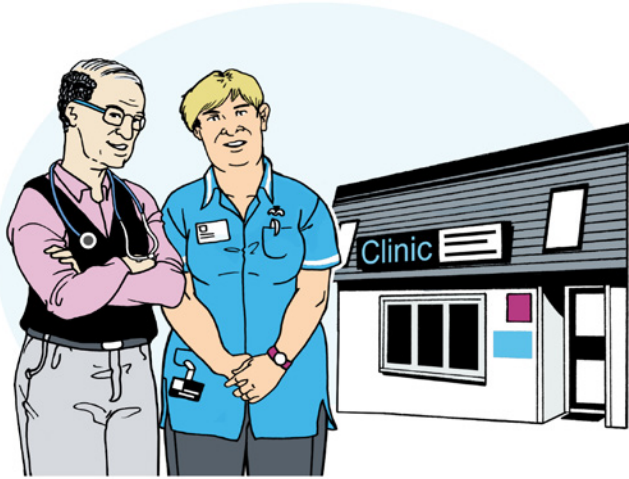
NHS England will help **Clinical Commissioning Groups** decide if the **Integrated Care Provider** should go ahead.

Word bank



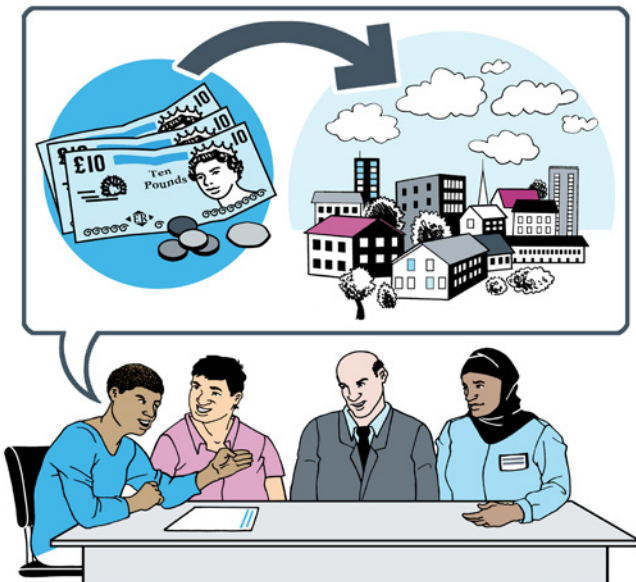
Integrated Care Provider:

A provider that is given one contract to run health and care services for local people. For example services people need in their homes, close to their homes and in local hospitals.



GP:

A doctor based in the community who treats people and sends people who have serious conditions to a hospital. **GP** stands for General Practitioner.



Clinical Commissioning Group:

This is a team led by local **GPs** which decides how to spend NHS money on services for local people.



This easy read document has been produced by CHANGE
www.changepeople.org