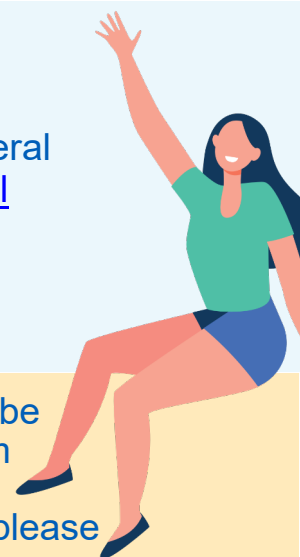


Making effective referrals to the NHS digital weight management programme

Thanks to the efforts of hundreds of practices across England several thousand patients have already been enrolled onto the [NHS Digital Weight Management Programme](#) (DWMP).

This brief guide aims to share three top tips to try to ensure your referrals are effective.



1 Please note that to be eligible for this service patients must be over 18, have a **BMI over 30** (lowered to **27.5** for those from black, Asian, and ethnic minority backgrounds) and have **diabetes, hypertension, or both**. For full eligibility criteria please see our [General Practice toolkit](#).

2 To avoid referral rejections please **DO NOT** amend the standard referral templates and **DO NOT** override, alter or replace auto-populated text on the referral template.

3 Referrals are made via the e-referral system (e-RS) only. You can make referrals on e-RS by using the searches below which are the same **wherever** in the country you are:

‘Specialty – Dietetics; Clinic Type – Weight Management’ and then entering the postcode ‘B70 9LD’ or by using the organisation search to search for ‘Midlands & Lancashire -Partnering NHSE/I’

On e-RS the programme is called ‘NHS Digital Weight Management Programme – NHS England. Location: Kingston House’

Please do not send referral templates to any local weight management service providers or directly to the national Digital Weight Management Programme team.

Materials including, clinical referral templates for IT systems, instructions on how to identify the programme in the e-referral system and guidance for practice staff and patients are available to download from the [DWMP GP template site](#) (you’ll need your practice ODS code for access).

If your General Practice uses Ardens Healthcare, the NHS DWMP e-referral templates have been uploaded on your EMIS and SystmOne IT systems and are ready to use.

Contact your local Data Quality team if it would normally be their role to place new clinical templates on your practice’s IT system.

