



SELECTT User Guide

Medicines, Procurement and Supply Chain

Date	13 May 2025
Version	1.7.0.2
Document Status	Ninth Release
Author	MPSC

Contents

1	Overview.....	4
1.1	Technology Used	4
1.2	Minimum System Requirements.....	4
	Web Browsers	4
1.2.1	.NET Framework 4.7.2	4
2	Obtaining and Installing SELECTT	5
2.1	Username and Password	5
2.2	Download Link.....	5
2.3	Installing.....	5
2.4	Uninstalling.....	6
2.5	Obtaining Support	6
3	Using SELECTT	7
3.1	Opening SELECTT and Logging On	7
3.2	Exiting the Application	8
3.3	Initial Screen and Menus.....	8
	3.3.1 The Menu	8
	3.3.2 The Buttons	10
3.4	General Conventions.....	11
	3.4.1 Additional Information.....	11
	3.4.2 Mandatory Fields.....	11
	3.4.3 Invalid Entries.....	12
	3.4.4 Prompts.....	12
	3.4.5 Drop Downs.....	13
3.5	Suggested Best Practices	13
3.6	Opening a ATAMIS Price Submission.....	14
	3.6.1 Options.....	14
	3.6.2 Tender Details	15
	3.6.3 Opened.....	15
	3.6.4 Suggested Offer Flow Process.....	15
3.7	Saving a Price Submission.....	16
	3.7.1 Menus.....	16

3.7.2	Offer Wizard	17
4	Making your Offer	18
4.1	Suggested Process Flow to complete your tender	18
4.1.1	Stage 1 - My Contacts	18
4.1.2	Stage 2 - Terms.....	20
4.1.3	Starting or Continuing the Offer Process	23
4.1.4	Stage 3 - NHS MPSC Product Selection	23
4.1.5	Stage 4 - Your Product.....	27
4.1.6	Stage 5 - Offer Prices, Volume Price Breaks and Terms.....	28
4.1.7	Stage 6 - Manufacturing Lead Times	31
4.1.8	Stage 7 - Offer Summary.....	32
4.1.9	Stage 8 - Make another offer.....	33
4.1.10	Stage 9 - Finish	33
4.2	Viewing Your Offers	33
4.2.1	Export To Excel.....	33
5	Submitting Your Offer Back to NHS MPSC.....	34
5.1	Exporting your Price Submission from SELECTT	34

1 Overview

SELECTT is NHS MPSC's "Supplier ELECTronic Tender Tool" enabling Pharmaceutical Suppliers to make price submissions ('offers') against NHS MPSC Pharmacy Tenders.

SELECTT is a Microsoft Windows application that is installed locally onto your computer via a secure web link. An Internet connection is required to install the application and then every time you use it.

Because of SELECTT's Internet capability NHS MPSC is able to provide updates as and when required.

1.1 Technology Used

SELECTT uses proprietary Microsoft technology called [ClickOnce](#) that addresses the following objectives:

- Ability to run application offline
- Rich end user experience
- Stronger security
- Increased performance and scalability
- Self Updating
- Self Contained

ClickOnce applications are easily deployed and managed (much like a web application) but have the rich responsive user interface users expect from Windows desktop applications.

1.2 Minimum System Requirements

To order to install SELECTT you will need the following minimum specification:

Supported operating systems

Microsoft Windows

Web Browsers

A web browser is required only to download SELECTT. We recommend using one of our supported browsers:

- Chrome
- Edge

If you use an unsupported browser, you may experience problems in downloading SELECTT.

1.2.1 .NET Framework 4.7.2

To install Microsoft .Net 4.7.2 please click [here](#)

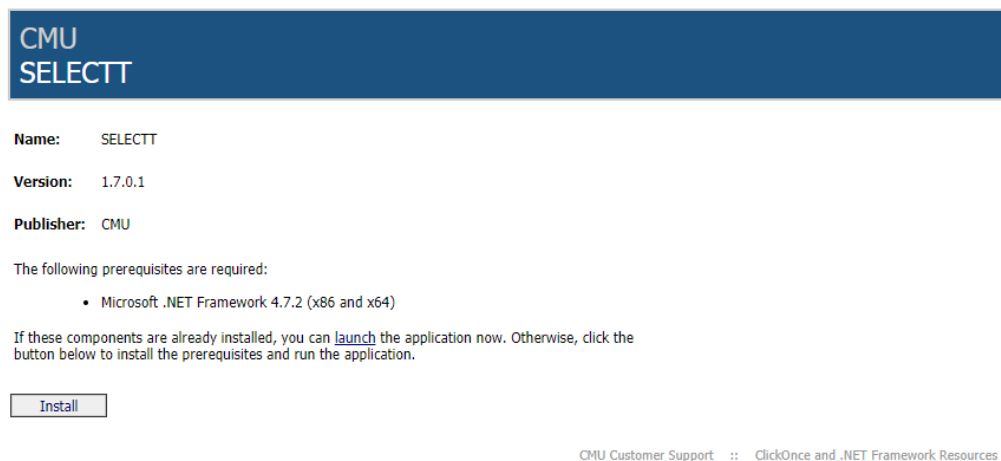
2 Obtaining and Installing SELECTT

2.1 Username and Password

Before you can use SELECTT you must first obtain a username and password from NHS MPSC. Please request this via our dedicated SELECTT Support email address england.selectt@nhs.net

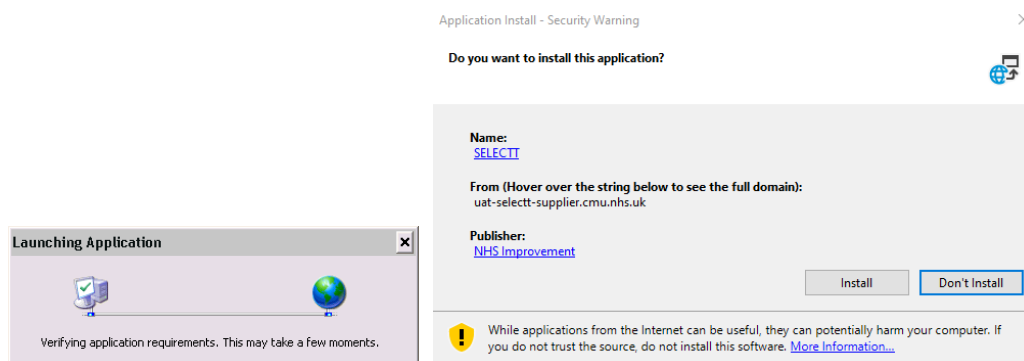
2.2 Download Link

SELECTT can be downloaded from <https://selectt-supplier.cmu.nhs.uk/selectt>



2.3 Installing

When you click on the install link, the file will be downloaded. Clicking on the downloaded file will begin the install where you will see the following two screens appear consecutively:

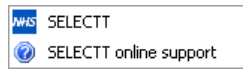


On the second screen you can see that you can now install the SELECTT application. You will also notice that the Publisher is 'NHS Improvement' verifying that the application you are about to install is indeed from NHS MPSC. Click the 'Install' button to begin installation.

If the details are not 'SELECTT' and 'NHS Improvement' please do not install the application by clicking on the 'Don't Install' button. Please contact MPSC via the SELECTT email address.

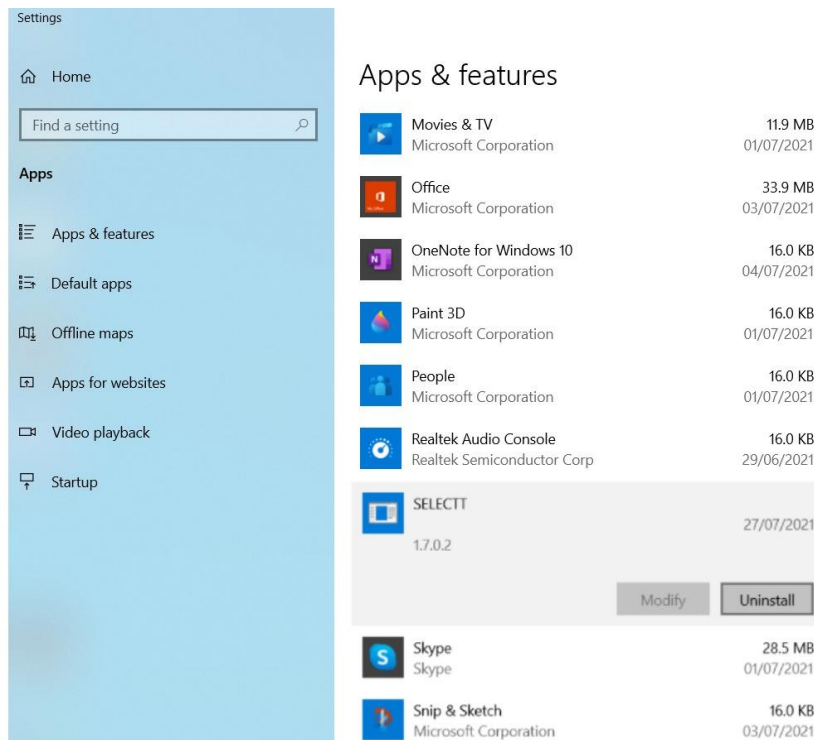
Upon successfully installing SELECTT you will find you have a new Program Group in your Windows Start Menu named 'NHS CMU'. This will contain two links:

- to run the 'SELECTT' application
- a web link to the 'SELECTT online support' web page



2.4 Uninstalling

As with conventional applications SELECTT can be uninstalled from your computer using the Add or remove programs icon in the Control Panel.



2.5 Obtaining Support

Please use our dedicated email address

england.selectt@nhs.net

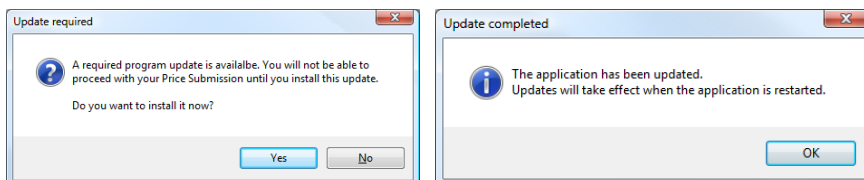
3 Using SELECTT

3.1 Opening SELECTT and Logging On

You have now successfully downloaded SELECTT to your local computer.

To run the application navigate to your Windows Start menu -> All Programs-> NHS CMU -> SELECTT.

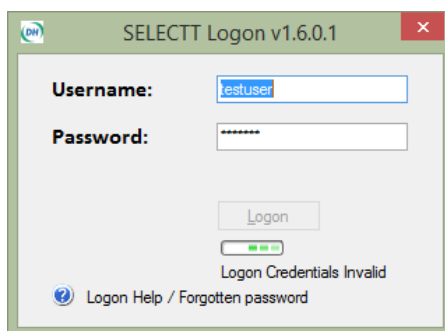
As SELECTT is a ClickOnce Application it always checks to ensure that the latest version is installed. If a new version is available you must install it as shown below.



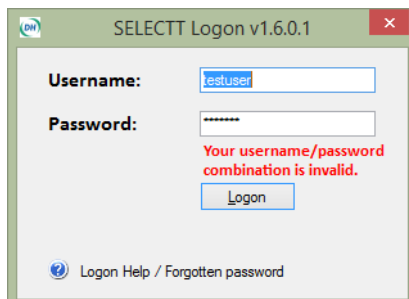
You do have the option to install it at a later date but you will be unable to use SELECTT again until the latest version is installed.

Logging into SELECTT requires you to have an active Internet connection. This is so your logon credentials can be validated. If your credentials are invalid you will not be able to logon.

The logon screen requires you to enter the Username and Password. These are case sensitive so please enter them carefully before clicking the 'Logon' button. To provide an extra layer of security your Password will be masked with asterisks.



If your logon credentials are invalid you will shown an appropriate message. (For security we will not tell you which part of your credentials were invalid.) If you are unable to logon please contact NHS MPSC for support. This can be done by clicking on the 'Logon Help / Forgotten password' link at the bottom of the logon screen which will create a new email to SELECTT support england.selectt@nhs.net



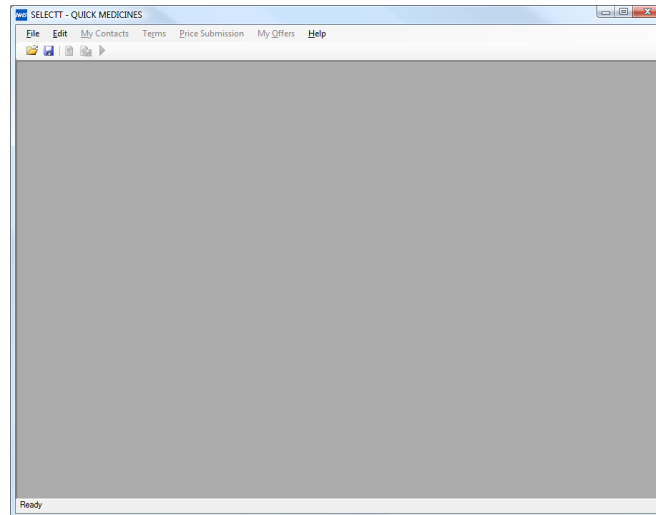
During the logon process you will be shown feedback on the current action being performed. If your logon is successful you will be shown the main SELECTT Window.

3.2 Exiting the Application

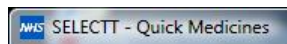
To exit SELECTT navigate to 'File -> Exit'

3.3 Initial Screen and Menus

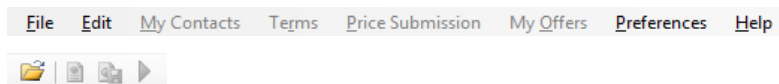
Following a successful logon the main SELECTT Window will be shown. This will have the look and feel of a standard Windows application.



You will notice that your Supplier Name is displayed at the top left hand side of the Menu bar (here 'Quick Medicines' is shown).

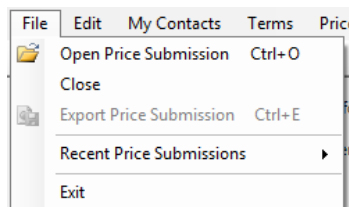


Below this are a series of Menu and Icons that will allow access to the various parts of SELECTT. Until you have loaded a Tender/Price Submission some of these will be greyed out. These are only relevant once you have opened a file and will not be activated until then.



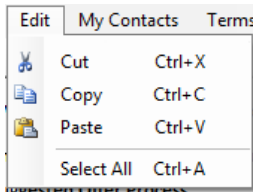
3.3.1 The Menus

3.3.1.1 File Menu



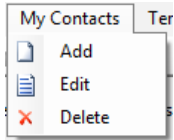
The 'File' menu is used to Open, Close and Export your Price Submission. You can also Exit SELECTT. Once you have opened a file, it is then available via the 'Recent Price Submissions' menu.

3.3.1.2 Edit Menu



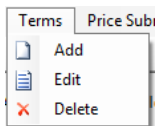
The 'Edit' menu is used to provide common shortcuts for Cut, Copy, Paste and Select All. You can use the standard shortcut keys, as shown, within textboxes.

3.3.1.3 My Contacts Menu



The 'My Contacts' menu provides a way of accessing the contacts that can be assigned to, or used in, the currently opened Price Submission. You have the option to Add, Edit and Delete a contact. This will be covered in [My Contacts](#)

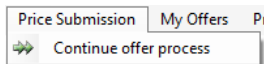
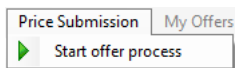
3.3.1.4 Terms Menu



The Terms menu provides access to any Terms you have created. You have the option to Add, Edit and Delete. This will be covered in [Terms](#)

3.3.1.5 Price Submission Menu

The Price Submission menu allows you to start / continue your offer process. SELECTT will establish which menu to show depending on the state of the currently opened Price Submission. This will be covered in [Making your Offer](#)

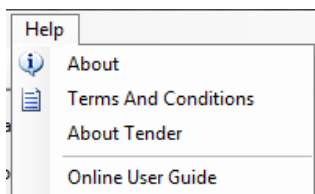


3.3.1.6 My Offers Menu



This menu is only enabled if you have started at least one offer. Unlike the other menus it has no dropdowns. Instead, as soon as you click on it a screen is shown with all your current offers. This will be covered in [My Offers](#).

3.3.1.7 Help Menu



The 'About' menu item provides information about SELECTT.

The 'Terms And Conditions' option shows SELECTT's Terms and Conditions.

'About Tender' displays the NHS MPSC Tender Header information for the currently opened Price Submission.

'Online User Guide' opens the SELECTT webpage, where you can view the user guide.

3.3.1.8 About

This provides basic details about SELECTT, including the current version.

There is also a link to the SELECTT webpage and an option to create an email to NHS MPSC by clicking on the 'Support Email' link.

3.3.1.8.1 About Tender

This provides an overview of the Tender for which the currently opened Price Submission is for. It includes the Tender header information (Code, Description), Start Date and End Dates of the framework, MPSC Contact Details, the Lots and Buying Groups in the Tender and any Award Criteria.

The screenshot shows a window titled "Tender opened" with the following content:

Tender Code: CM/PWW/09/3423

Tender Description: Buying Group 1 Generics additional heading info

CMU Contact Details

Name: David Quick
Phone: 0118 1234 5678
Email: david.quick@cmu.nhs.uk

Lot	Buying Group	Start Date	End Date
1	Buying Group PLOI (PLOI)	30/11/2009	30/11/2009
1	Buying Group YHED (YHED)	30/11/2009	30/11/2009
2	Buying Group EDCV (EDCV)	30/11/2009	30/11/2009
2	Buying Group LOPY (LOPY)	30/11/2009	30/11/2009
3	Buying Group 1 (BUY1)	30/11/2009	30/11/2009

Notes

Testing - This tender can be used for checking in the supplier price submission by changing the text boxes for vol price break etc. and seeing whether the changes are reflected...

Award Criteria


Market Risk
Efficacy

Have you opened the correct Tender?


3.3.2 The Buttons

In addition to the menus, there is also a series of shortcut icons (buttons) that can be used for common tasks.

3.3.2.1 Open


 This is used to open a Price Submission file.

3.3.2.2 Save

 This is used to save your Price Submission.

Please note that when you are in midway through the offer wizard, the save button is disabled. Instead, you must use the 'Save and Continue' button to save your Price Submission.

3.3.2.3 My Offers

 This button is only enabled if you have made at least one offer. When you click on it a list of your existing offers is shown. This will be discussed in [My Offers](#).

3.3.2.4 Export

 Once you have a fully completed Price Submission/Offer this button can be used to export your data. This will be covered in [Exporting your Price Submission from SELECTT](#)

3.3.2.5 Start / Continue Offer Process.




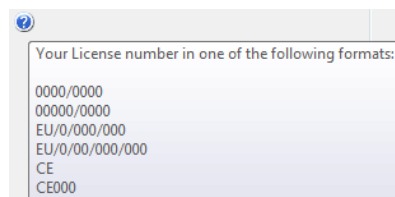
This allows you to Start or Continue the Offer Process. SELECTT will establish which button to show depending on the state of the currently opened Price Submission. This will be discussed in [Making your Offer](#)

3.4 General Conventions

SELECTT has been designed to follow standards for Windows applications and will therefore take on any colours/appearance styles you have used for your Windows environment. Note that the font used by SELECTT will remain consistent regardless of your Windows settings.

3.4.1 Additional Information

On certain screens there may be additional information available. Such information can be accessed via any of the  icons by hovering your mouse over it. A small popup (tooltip) will be displayed with additional information, as in this example:



3.4.2 Mandatory Fields


For screens that have mandatory fields that need to be provided these will be highlighted in **bold** on the screen.

In the example below, the First Name, Last Name and Phone Number or Fax Number are shown in bold indicating that they are mandatory fields. In this case you will be unable to Update the record until there are entries in each of these fields.

3.4.3 Invalid Entries

To maintain consistency, and to prevent incomplete Price Submissions being returned to NHS MPSC, SELECTT will ensure that entries you do make are valid and in the correct format. When entries are invalid, missing or in the incorrect format, SELECTT will highlight these to you as below.

3.4.3.1 Error Icon

If you try to save and continue when you haven't entered required information, a small flashing  icon will be displayed against each missing field. You can hover over this icon with your mouse to get additional information, as in the example below, which will explain what is required to complete this field correctly:

3.4.3.2 Red Border

Depending on the screen you are on, an invalid entry may be highlighted with a red border, as in the example below.

Minimum Order Quantity	Minimum Order Quantity
al	0

3.4.4 Prompts

There are many actions that can be performed within SELECTT. Many of these could have a big impact on your Offer. Whenever a critical action is performed SELECTT will display a prompt asking if you are really sure you want to proceed. This should stop accidents such as deleting the wrong contact, the wrong offer etc. You should still, however, be vigilant with all actions performed.

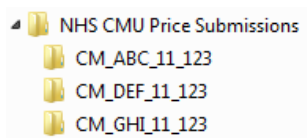
3.4.5 Drop Downs

There are several places within SELECTT that offer a choice to be made via a dropdown menu. In such places, where a choice has not already been made, the default entry will be shown as:





3.5 Suggested Best Practices

As you are likely to make making many Price Submissions to NHS MPSC we would recommend you keep all your Price Submissions in one place, such as making a 'My NHS MPSC Price Submissions' folder in you're My Documents folder. Within this you could then create a sub-folder for each NHS MPSC Tender using the relevant Tender Code. Here is an example:



Create one folder for each NHS MPSC Tender you are interested in. Create this folder within a NHS MPSC Price Submissions folder within your My Documents folder.

Name	Date modified	Type
 CM_ABC_11_123.xml	24/09/2010 10:48	XML Document
 CM_ABC_11_1234.cmu	24/09/2010 10:47	CMU File

Keep the default filename for the Tender file downloaded from ATAMIS. When you export your Price Submission, save it back to the folder with the same Tender Code.

Under no circumstances should you change the file extensions of Price Submission files (*.xml) or Price Submission Export files (*.cmu). If these are changed you will not be able to use them with SELECTT.

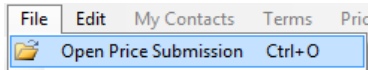
3.6 Opening a ATAMIS Price Submission

3.6.1 Options

There are 3 ways to open a Price Submission:

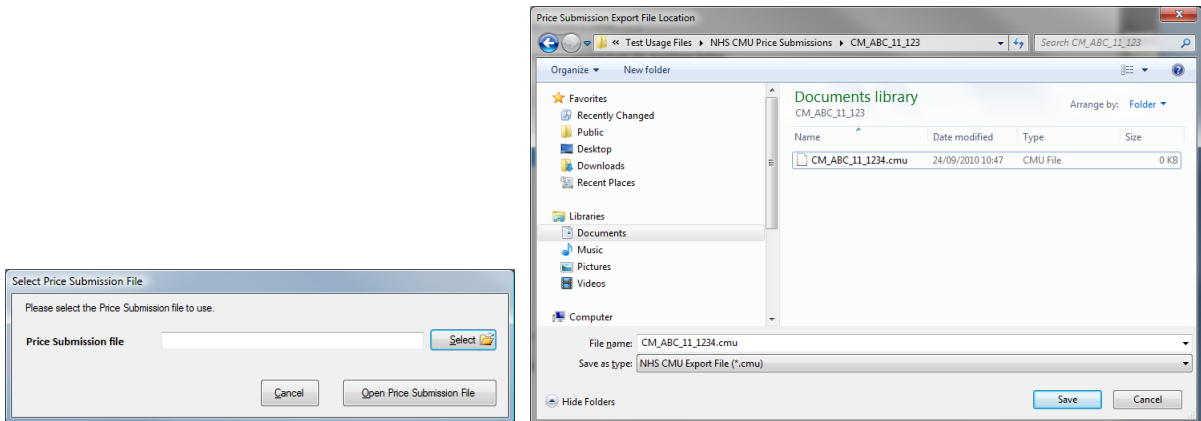


<- via the Open toolstrip button



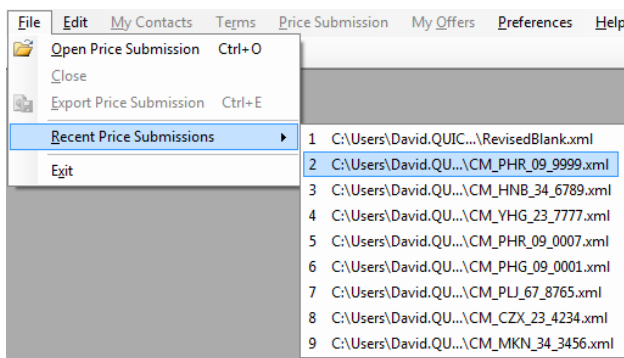
<- via the File | Open menu

These first two methods will display a new window where you can select the location of the Price Submission you would like to open as shown:



Please note that only files with a file extension of “*.xml” will be listed. This screen will allow you to browse to your local file. Once a Price Submission file has been selected please click the ‘Open Price Submission File’ button.

The third method will attempt to reopen a previously opened Price Submission file.



<- via the File | Recent menu

3.6.2 Tender Details

Once a Price Submission file has been selected you will be presented with a preview screen summarising Tender information. This allows you to verify that you are opening the correct file. There is the option to continue opening the submission file ('Yes') or not ('No').

Tender opened

Tender Code: CM/PWW/09/3423

Tender Description: Buying Group 1 Generics additional heading info

CMU Contact Details
Name: David Quick
Phone: 0118 1234 5678
Email: david.quick@cmu.nhs.uk

Lot	Buying Group	Start Date	End Date
1	Buying Group PLOI (PLOI)	30/11/2009	30/11/2009
1	Buying Group YHED (YHED)	30/11/2009	30/11/2009
2	Buying Group EDCV (EDCV)	30/11/2009	30/11/2009
2	Buying Group LOPY (LOPY)	30/11/2009	30/11/2009
3	Buying Group 1 (BUY1)	30/11/2009	30/11/2009

Notes
 Testing - This tender can be used for checking in the supplier price submission by changing the text boxes for vol price break etc. and seeing whether the changes are reflected...

Award Criteria
 Market Risk
 Efficacy

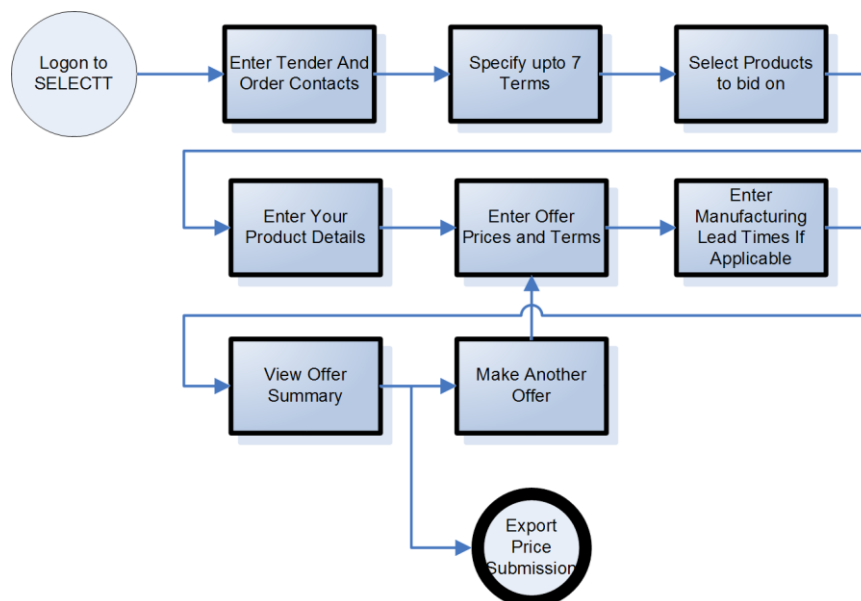
Have you opened the correct Tender?

3.6.3 Opened

Once a Price Submission file has been opened the SELECTT window will be shown again but this time with any previously disabled menus now enabled.

3.6.4 Suggested Offer Flow Process

Making a Price Submission against a NHS MPSC Tender can be complicated. For this reason we suggest you use the following systematic approach:



Stages

1. **Contacts**. We would suggest entering your contacts first. Currently two contacts can be used within a Price Submission:
 - the **Tender** contact
 - the **Order** contact for all Terms that use a Direct distribution routeIf you don't specify these first SELECTT will prompt you when it needs them.
2. **Terms**. It is then best to enter all your Terms. Because some Terms require contact information, such as those using a Direct distribution route, you can easily select from those contacts you have already entered.

You can now begin the **Price Submission Wizard**. The wizard will only let you enter your offer in the correct sequence, so you don't have to worry about missing something out. Because some Tenders require specific information, such as Volume Price Breaks or Manufacturing Lead Times, SELECTT will only show those screens or elements when they are required as part of your tender submission.

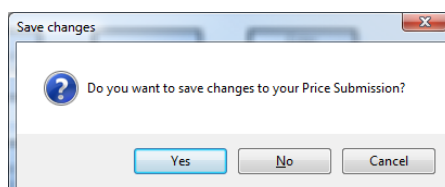
3. **Product Selection**. Now go through and select all the products you would like to make an offer against.
4. **Your Product Details**. Now click on each product you have selected to begin making your offer. First you need to enter your products details.
5. **Offer Prices, Volume Price Breaks & Term Assignment**. Now enter your offer prices, volume price breaks if applicable, and Terms for your product.
6. **Manufacturing Lead Times**. If applicable, enter your manufacturing lead times. This is your delivery lead time based on the date the order was raised by a Trust.
7. **Offer Summary**. Review your product offer
8. When you get to the end of an offer, you have the option to **make another offer**, or **Export**.
9. **Finish**

3.7 Saving a Price Submission

When you use SELECTT you interact with it in one of two ways either via the Menus or by using the Offer Wizard.

3.7.1 Menus

You can Add / Edit / Delete both Terms and Contacts via the appropriate menu. Whenever you make a change SELECTT keeps track of it. When you close or exit SELECTT if any changes were made you will be asked if you want to save these changes:



If you do not choose **Yes** any changes made via the menu will be lost.

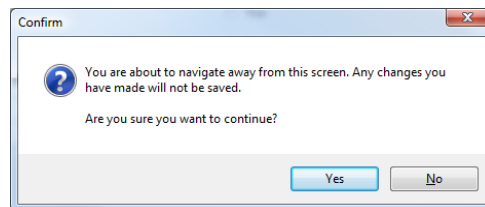
3.7.2 Offer Wizard

The main screens within SELECTT are used via the Start/Continue Price Submission options. As soon as you select this option, a **wizard style** interface is opened, starting with stage 1 and allowing you to continue until you have made a complete offer against a product. These screens all share a common footer containing buttons to navigate back and forth between these stages. These are shown below:



Once in the Wizard, your changes are automatically saved when you click the 'Save & Continue button' (or the 'Finish' button if available).

If the 'Previous' button is available, and you click it, you will lose any changes made in the current stage. You also have the option 'Cancel' at any point of the Wizard. If you click this button you will lose all changes made whilst in the wizard, not just the current stage. If you click the Previous or Cancel buttons you will receive a prompt indicating that any changes made will be lost, giving you the option to continue or not:



The 'Finish' button is only available on the first and last stages of making your offer. Clicking on it will take you to the export stage, covered in the section [Exporting your Price Submission from SELECTT](#).

4 Making your Offer

4.1 Suggested Process Flow to complete your tender

4.1.1 Stage 1 - My Contacts

4.1.1.1 Tender Contact

As part of your offer you must specify a contact for this Tender. This will be the details of the person NHS MPSC should contact if they have any queries with your Price Submission. You are only allowed to allocate one Tender Contact per tender.

4.1.1.2 Order Contact

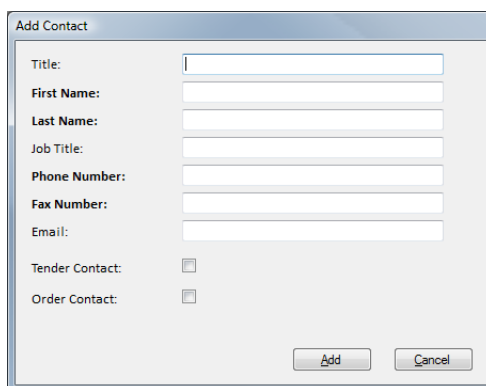
An Order Contact is required for any Term that uses a distribution route of Direct. If you have more than one direct Term then the same contact will be used for all.

4.1.1.3 Managing

To manage your contacts you can use the 'My Contacts' menu. This gives you options to Add, Edit and Delete a contact.

4.1.1.4 Add

You can currently enter up to two contacts against a single Price Submission file – a Tender contact and an Order contact. Click on the 'Add' menu item. The following screen is shown:

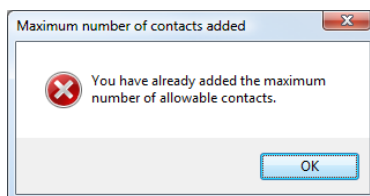


The 'Add Contact' dialog box features the following fields and options:

- Title: [Text Input]
- First Name: [Text Input]
- Last Name: [Text Input]
- Job Title: [Text Input]
- Phone Number: [Text Input]
- Fax Number: [Text Input]
- Email: [Text Input]
- Tender Contact:
- Order Contact:
- Buttons: Add, Cancel

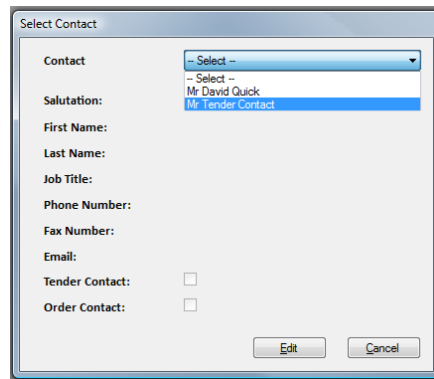
Enter the details of the contact, and then check whether or not they are the Tender Contact, Order Contact (or both!). If you do not specify this now then SELECTT will prompt you later when contacts are required.

If you have already entered 2 contacts you will not be able to add another one. The following screen will be shown:



4.1.1.5 Edit

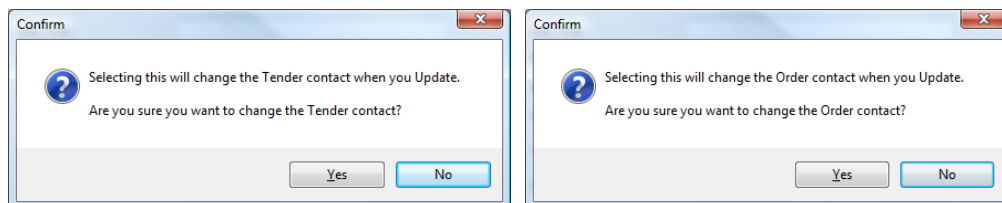
To edit an existing contact, click on the 'Edit' menu item. The following screen is shown where you can select via the dropdown the contact you would like to edit:



Select the contact you want to make from the drop down, and click the 'Edit' button. The following screen displays:

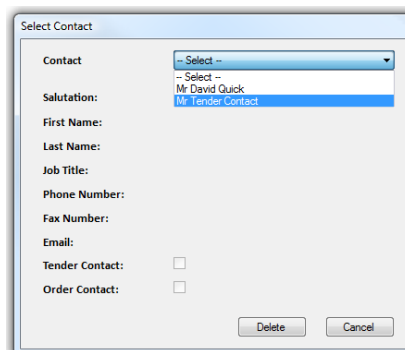


Make the necessary amendments the click 'Update'. To cancel out of the window or disregard your changes click 'Cancel'. Please note you can only assign the current contact as the Tender or Order Contact if they are not already those. If you do this and they are assigned to another contact, you will get a prompt as below:

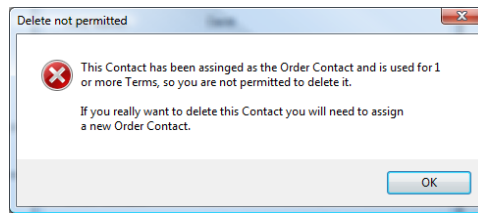


4.1.1.6 Delete

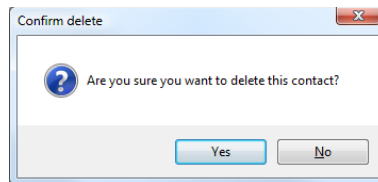
If you would like to delete a contact, choose the Delete menu item. The following screen is shown where you can select via the dropdown the contact you would like to delete. Once a Contact has been selected, their details are displayed.



If the contact is assigned as the Order Contact you will not be able to delete it until you have assigned another contact as the Order Contact, as in the following screen:



If you are able to delete the contact, you will get a prompt to ensure you want to proceed.



4.1.2 Stage 2 - Terms

Every offer price you enter must have an associated set of Terms. These let NHS MPSC know the terms upon which your offer is made. You can assign up to 7 Terms per Tender with varying Term Types. Note that a 'Stores' Term Type will always be your Term 7 and you can only have one of these per Tender.

4.1.2.1 Managing

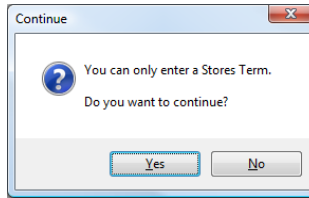
To manage your Terms you can use the Terms menu. This gives you options to Add, Edit and Delete a Term.

4.1.2.2 Add

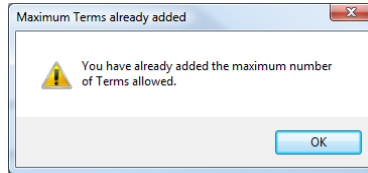
You can currently enter up to **7 Terms** against a single Price Submission file. Click on the 'Add' menu item. The following screen is shown:

A form titled "Add Term" with the following fields: "Term Type" (dropdown menu), "Term Number" (text input), "Lead Time" (text input), "Min. Order Value" (text input), "Delivery Charge Info" (text area with "100 chars. remaining of 100." below it), "E Ordering" (radio buttons for Yes and No), "E Invoicing" (radio buttons for Yes and No), and "Additional Information" (text area with "255 chars. remaining of 255." below it). There are "Add" and "Cancel" buttons at the bottom right.

If you have already added 6 Terms, your seventh can only be a 'Stores' Term Type, which is enforced.



If you have already added 7 Terms you will not be able to add another one, as in the following screenshot:



4.1.2.2.1 Fields

- Term Type*
 - This is the distribution route for the Term. Because you can only have one Stores Term if this has already been setup it will not appear as an entry. Once you have selected a Type from the drop down, additional fields may become visible to the right. These are:
 - Order Contact*

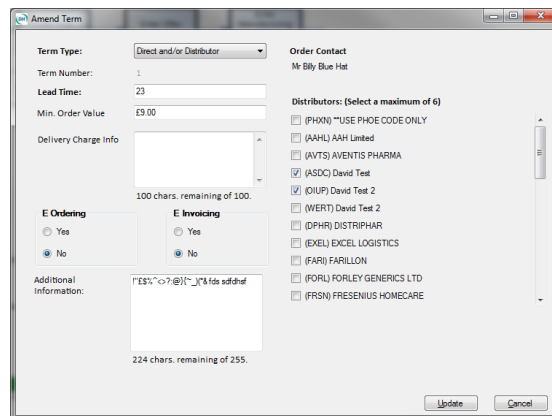
If the Term Type uses a distribution route of Direct, you will need to enter your Order Contact.
 - Distributors*

If the Term Types use a distribution route of Distributor, you will need to enter the distributors that can be used, up to a maximum of 6.
- Term Number
 - This is the number for the Term and is automatically generated using the next lowest number available.
- Lead Time*
 - This is your lead time to fulfil a request to supply a product.
- Min. Order Value
 - This is your minimum order value to supply a product(s)
- Delivery Charge Info
 - Information on delivery charges
- E Ordering*
 - Whether or not you can accept electronic orders
- E Invoicing*
 - Whether or not you are able to generate electronic invoices
- Additional Information
 - Any additional information you would like to enter, up to 300 characters.

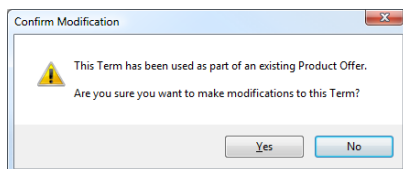
* : Denotes a mandatory field. Order Contact and Distributors only mandatory if the relevant Term Type is selected.

4.1.2.3 Edit

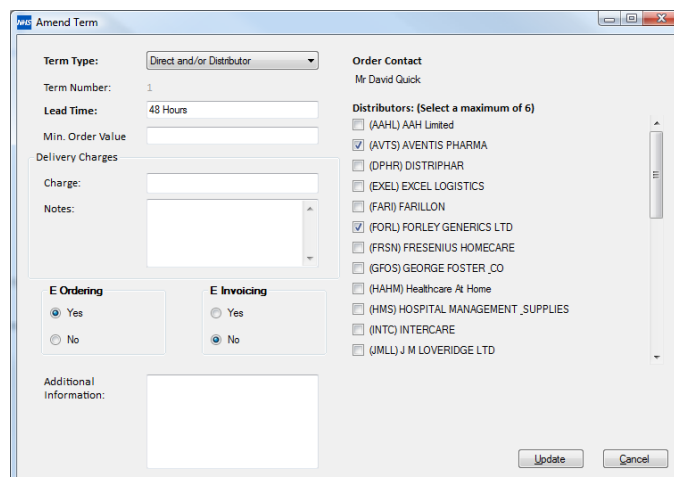
To edit an existing Term, click on the Edit menu item. The following screen is shown where you can select via the dropdown the Term you would like to edit. Once the Term has been selected its details are shown.



Now click the 'Edit' button. If the selected Term has been used as part of an existing offer, you will be shown a prompt asking for confirmation that you want to edit this Term:



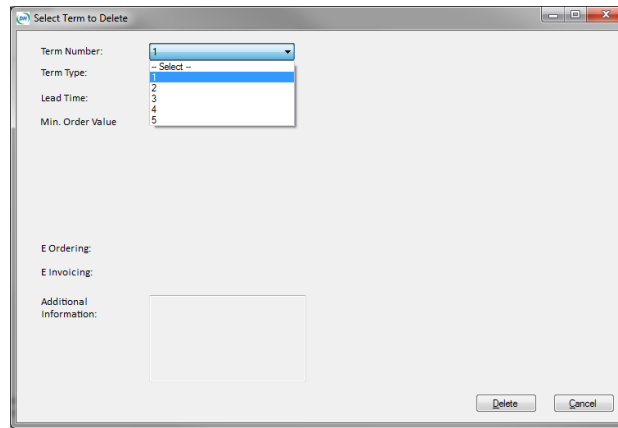
If you continue, or the screen is not shown, you will then see the main editing screen:



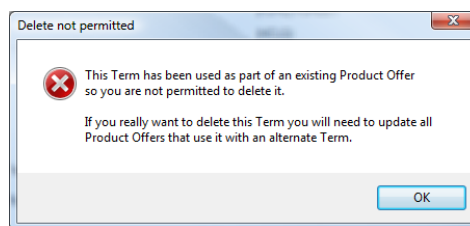
Make your amendments and then click the 'Update' button.

4.1.2.4 Delete

If you would like to delete a Term, choose the Delete menu item. The following screen is shown where you can select via the dropdown the Term you would like to delete: Once the Term has been selected, its details are shown.



If the Term has not been used as part of an existing offer you will get a confirmation prompt. If the Term has been used against an existing offer, you will be given a warning that you cannot delete a Term that forms part of an offer, as below:



4.1.2.5 Term Types

Whenever you choose a Term Type of 'Store' it will default to Term Number 7. This is by design and cannot be changed. As you can only have a single 'Store' Term per Price Submission once you have added one you it will no longer appear for selection in the Term Type dropdown.

4.1.3 Starting or Continuing the Offer Process

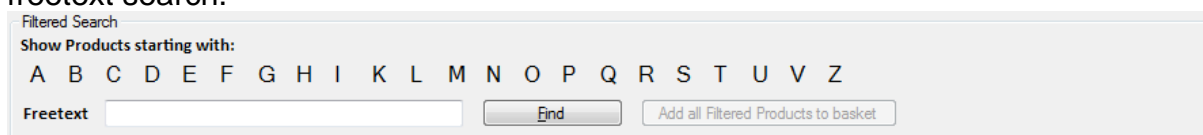
Now that you have setup your Contacts and Terms, you can now begin making your offers. You can do this by using the Price Submission menu, or the 'Start / Continue' button.

4.1.4 Stage 3 - NHS MPSC Product Selection

The stage begins the offer wizard. You begin by selecting the products you are interested in making an offer against. There are several ways you can select products to help make the selection as easy as possible.

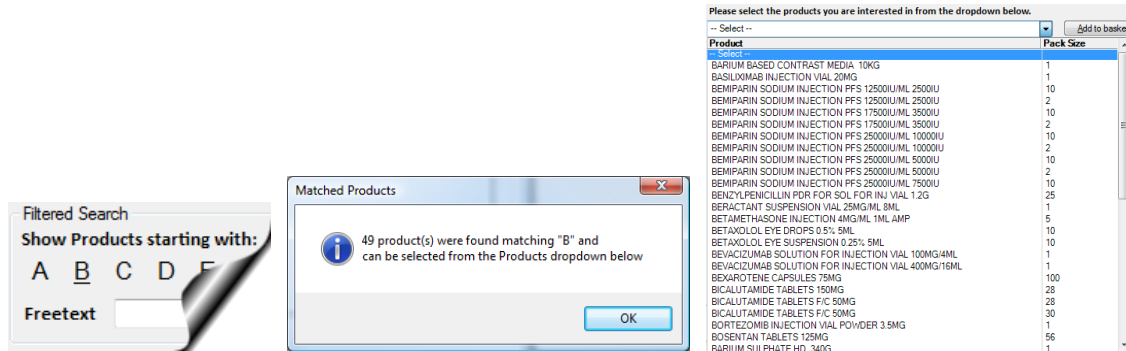
4.1.4.1 Filtered Searching

Because the number of NHS MPSC Products being tendered may be large, SELECTT has a simple and quick way of filtering the products so they are more manageable. You can either showing Products starting with a certain letter, or find them by using a freetext search.



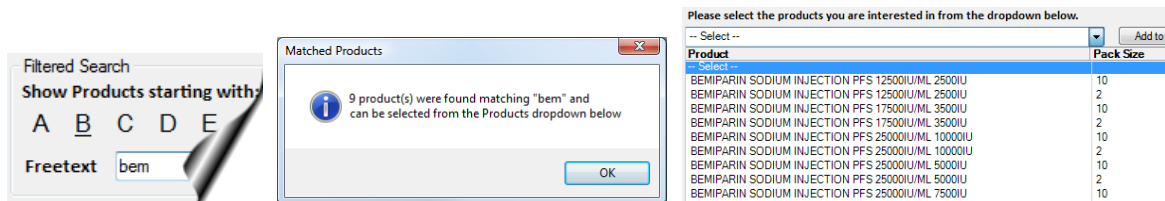
4.1.4.1.1 Product Letter

As soon as you enter this screen a listing of letters is displayed showing the first letter of all products within the tender. By clicking on the appropriate letter you can filter the product dropdown to only show products starting with this letter that are not currently selected. As soon as you click on a letter it is marked with an underscore, and you will be shown a prompt indicating if any products were found that have not already been added to your basket. The following screenshots show where the letter B has been selected.



4.1.4.1.2 Freertext Search

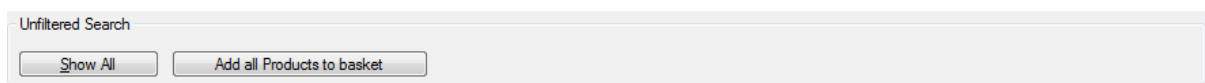
You can enter any freetext you like and it will be looked for in the Product name when you click 'Find'.



4.1.4.1.3 Adding all Filtered Products

If you would like to add all the Products found using one of the filters, click the 'Add all Filtered Products to Basket' button. Note this button is only enabled if you have clicked on a Product letter or searched using the free text option, and then only if filtered products were found that are not already in your basket.

4.1.4.2 Unfiltered Searching



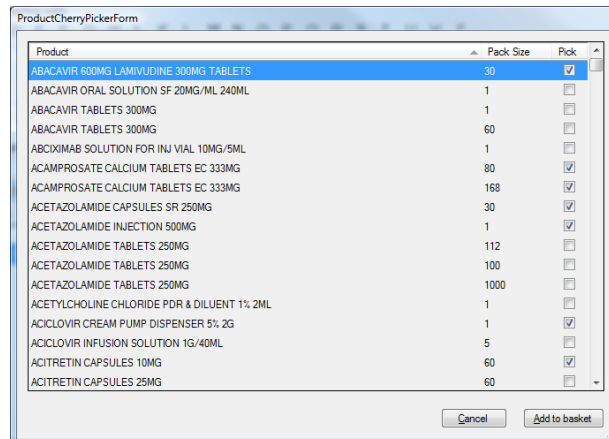
If you would like to show all products not currently selected, click the 'Show All' button and all Products not currently selected will be shown in the products dropdown. Alternatively if you would like to add all products not selected click the 'Add all Products to Basket' button.

4.1.4.3 Product Dropdown

All Products that match the current search criteria (filtered or unfiltered) which have not already been added to your basket are shown in the product dropdown. From this dropdown you can select any single Product and use the 'Add to Basket' button to add it to your basket.

4.1.4.4 Cherry Picking

If you would like to add a number of products at once you can “cherry pick” those you are interested in by clicking the ‘Cherry Pick Products’ button. This opens a new screen showing all the Products that were in the product dropdown. Click the checkbox in the last column for each Product you are interested in, as in the screenshot:



Once you have selected all the Products you want to cherry pick, click ‘Add to basket’.

4.1.4.5 Product Basket

At the bottom of this screen is a list of all the Products you have currently selected, which is known as your Product Basket. For each selected Product you can see its ‘Status’, view its ‘Offer Summary’, and directly jump to its offer. There is also a counter showing how many products you have selected.

4.1.4.6 Jump to Your Product

If you would like to quickly jump to a particular Product’s offer, click the Product name. This will take you to the Product entry screen, covered in the section [Your Product](#)

4.1.4.7 View Summary

For all Products in your Basket that have an offer against them, an icon will appear in the Summary column. Clicking on this icon will show a screen detailing the offer details entered. This is covered in the section [Viewing Your Offers](#)

4.1.4.8 Sorting

You can sort your Basket by clicking on one of the following column headings.

- Status
- Product
- Pack Size
- NPcode

As you do your Basket is sorted by that column, the sort direction being indicated by a small up or down arrow at the right hand side of the column heading. In the following screenshot the Product column has been sorted in ascending order:

Status	Summary	NPcode	Product	Pack Size	Remove
Green		DHC051	EXEMESTANE TABLETS 25MG	15	X
Red		DHC050	LANREOTIDE AUTOGEL INJ PFS 90MG	1	X
Red		DHC049	LANREOTIDE AUTOGEL INJ PFS 60MG	1	X
Amber		DGD091	ALPROSTADIL INJECTION DUO STARTER PACK 20MCG	2	X
Green		DEC199	ABACAVIR 600MG LAMIVUDINE 300MG TABLETS Testing one	30	X
Green		DEC136	_ABACAVIR 300MG LAMIVUDINE 150MG ZIDOVUDINE 300MG Testing Testing one	600	X
Green		DEC111	ABACAVIR TABLETS 300MG	60	X

4.1.4.9 Offer Status

The first column of your basket shows the current status of your offer for each product. It is colour coded as follows:

- Green Has fully completed offer
- Amber Has partially completed offer
- Red No offer made

For a reminder of these hover your mouse over the coloured icon for a helpful tooltip.

4.1.4.10 Removing a Single Product Offer

To remove a single Product offer from your basket, click on the 'Remove' icon in the right hand column. You will be prompted for confirmation before the delete occurs. By confirming the deletion, your offer for that product will be permanently deleted, so proceed with caution.

4.1.4.11 Removing all Products Without an Offer

If you would like to remove all Products from your basket that do not currently have an offer, click on the 'Remove Products without an offer' button at the bottom of your basket.

4.1.4.12 General

If you add all the available Products to your basket all the searching and adding controls will become disabled. They will only be enabled again once you have removed a product from your basket.

Once you have selected all the Products you are interested in please click 'Save & Continue' button to be taken to the next stage, [Your Product](#). When you click this button your Price Submission will be automatically saved for you, and you will no longer be able to manually save.

4.1.5 Stage 4 - Your Product

This stage is where you enter the details of your actual product offer for the currently selected NHS MPSC Product (for example you may be offering a different pack size to that requested). You can arrive at this screen by one of two ways:

- by clicking 'save & continue' from the product selection stage
- by clicking on a product Name from the product selection stage

If you have arrived by clicking a product name in your basket, the fields on the screen are automatically enabled and you can begin entering your product details. Otherwise you must select the product you are interested in via the product dropdown at the top of the screen.

The product you clicked on will be displayed at the top of the screen.

Lot	Bgrp	Usage
1	10X	42
1	1SW	42
1	1WES	50
2	5NE	219
2	8YK	50
4	2SE	50
5	BGRS	800
5	BGRB	1200

4.1.5.1 Product Dropdown

If you have not clicked on a product name to arrive at this screen, you can select the product you are interested in making an offer on via the product dropdown at the top of the page. All the products from your product basket will be listed, together with an indication of each products offer status. The products are sorted alphabetically by name. As soon as you click on an item in the dropdown, any currently entered product details are reset. If the selected product has an existing offer its details are automatically entered for you.

4.1.5.2 Usage

Once a product has been selected, its estimated usage is displayed. This shows the breakdown for each Buying Group in each Lot.

Fields

- GTIN*
 - This is the “Global Trade Identification Number” (former EAN code) of your product. This consists of 13 or 14 digits and will be validated before you can continue to the next stage. Note this validation only ensures the GTIN has been entered in the correct format not that it is the correct code for your product.

- Brand Name
 - This is the brand name of your product if one is available.
- Licensing Information*
 - Licence information will either be the licence number for your product, or if this has not been received yet, the date on which you expect to receive your licence. If you enter a date, it cannot be less than the current date. CE marks can also be added.
- Requested Pack Size
 - This is the pack size being tendered and the usage quoted will be relevant to this pack size. This does not restrict you from offering a different pack size (next).
- Offered Pack Size*
 - This is the pack size that you are offering. If you have chosen to offer a different pack size please remember that **all your prices, list and offer prices, should relate to the pack size you have actually offered**
- List Price*
 - This is your product's list price.
- Remarks
 - If you would like to add any additional information about your product you can enter it here, up to 30 characters.
- Products Registered on PharmaQC*
 - Indicates if your products have been registered on PharmaQC.
- Images Uploaded to PharmaQC*
 - Indicates if your product's images have been uploaded to PharmaQC. Note if you choose Yes then your product must also be registered on PharmaQC.

* : Denotes a mandatory field.

4.1.5.3 General

Once you are happy with your product's details, click 'Save & Continue' to save your Price Submission and go to the next stage.

4.1.6 Stage 5 - Offer Prices, Volume Price Breaks and Terms

This screen is where you enter your actual offer prices, volume price breaks*, discounts* and Terms for supplying your product to NHS MPSC. At the top of the screen your product name and pack size is shown along with its list price.

* : only available on certain Tenders.

Below this are all the Lots for which the NHS MPSC Product is used in, together with the number of buying groups they contain and the usage for each:

Lot 1 bids		Lot 2 bids		Lot 3 bids	
Total Usage: 10,756		Total Usage: 35,293		Total Usage: 543	
(Offer prices for Number of Buying Groups)		(Offer prices for Number of Buying Groups)		(Offer prices for Number of Buying Groups)	
1	2	1	2	1	2

Usage Breakdown:
 PLOI : 10,256 - 30/11/2009
 YHED : 500 - 30/11/2009

The total usage of the selected NHS MPSC Product is also shown, and you can get a breakdown for each Buying Group by hovering over the help icon

4.1.6.1 Fields

Each field is specific to one “offer row”, of which you can have a **maximum of 7 per product**, and contains:

4.1.6.1.1 Minimum Order Quantity

This is the minimum order quantity that each trust would need to purchase in order to achieve this price.

4.1.6.1.2 Volume Price Break

Some Tenders give you the opportunity of specifying a Minimum Order Quantity (MOQ) for a Buying Group or Trust in addition to the standard Per Order by Trust. In this scenario, you can add a further 6 offer rows per product as required. Please note you can't have more than 6 offer rows with a volume price break of per year by Buying Group or per year by Trust.

If volume price breaks are applicable for the current Tender, you will be given a dropdown from which you can select the appropriate volume price break, as in the following screenshot:

Minimum Order Quantity		Volume Price Break		Lot 1 bids	
1212		per year by trust		Total Usage: 10,756	
		<ul style="list-style-type: none"> -- Select -- per order by trust per year by buying group per year by trust 		(Offer prices for Number of Buying Groups)	
				1	2
				£15.00	£10.00

- per order by trust
- per year by buying group
- per year by trust

If volume price breaks are not applicable, the dropdown and heading will not be visible.

4.1.6.1.3 Offer Prices

You enter your offer prices against the number of buying groups within a Lot that you are interested in supplying. In the screenshot above, an offer price of £15.00 has been given to supply 1 Buying Group in the Lot, whilst another offer price of £10.00 has been given to supply 2 Buying Groups in the Lot. You must enter at least one offer price, but you can enter as many offer prices per row as there are Buying Groups in each Lot.

The offer price must be less than or equal to your product's list price.

4.1.6.1.4 Discounts

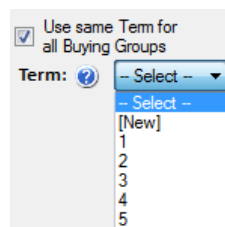
A Supplier Discount is an additional discount that you are willing to apply to all offer prices for the current MOQ row, should you be awarded a certain percentage of the Buying Groups available (currently threshold set to 50% and 66%). You are only able to enter a discount if you have entered offer prices against these required percentages. A discount must be between 0% and 100%.

Supplier Discounts are only applicable on certain Tenders, therefore they will only be shown when appropriate. When they are shown they will appear at the end of each offer row, as in the following screenshot:

Minimum Order Quantity	Volume Price Break	Lot 1 bids		Lot 2 bids		Lot 3 bids		Discounts for % of Buying Groups Awarded	
		Total Usage: 10,756 (Offer prices for Number of Buying Groups)		Total Usage: 35,293 (Offer prices for Number of Buying Groups)		Total Usage: 543 (Offer prices for Number of Buying Groups)		50%	66%
1212	per year by trust	1	2	1	2	1	2		2%

4.1.6.1.5 Terms

Each offer row must specify the Terms that are applicable for the offers on the current row. You have the choice of using the same Term for all Buying Groups that your offer prices cover, or you can specify a Term against each Buying Group. Terms can be selected via the Term options at the end of the row, as in the following screenshot:



4.1.6.1.6 Using the Same Term

To use the same Term for all Buying Groups select the required Term from the dropdown. If you have not entered any Terms yet, or you would like to add a new one, please choose the [New] option where you will be taken to the 'Add Term' screen. For more information on adding Terms see the section [Terms](#)

4.1.6.1.7 Using Different Terms

If you would like to assign different Terms to buying groups, you can uncheck the 'Use same Term for all Buying Groups' option. On doing this, you will then be shown all the

Buying Groups for each Lot that has at least one offer price, and in the following screenshot:

The screenshot displays a procurement interface with three columns representing different lots:

- Lot 1 bids:** Total Usage: 10,756. Offer prices for Number of Buying Groups: 1, 2.
- Lot 2 bids:** Total Usage: 35,293. Offer prices for Number of Buying Groups: 1, 2.
- Lot 3 bids:** Total Usage: 543. Offer prices for Number of Buying Groups: 1, 2.

Below the lot information, there are input fields for offer prices (e.g., £1.00) and dropdown menus for buying groups (BUY1, BUY2). A tooltip for the 'PLOI' buying group is shown, providing details:

- Buying Group Code: PLOI
- Term: 2
- Type: Distributor Only
- Lead Time: 3
- Min. Order Value:
- Delivery Charge Info: Free if over £1000
- E Invoicing: Yes
- E Ordering: No
- Additional Info.: Please don't call before 9am.

The Terms for each Buying Group are only enabled in Lots that have at least one offer price. As you can see above, Lots 1 and 2 have offer prices so the Buying Group Term dropdowns are enabled. Lot 3 has no offers so the dropdown remain disabled.

Select the Term you would like to apply to each Buying Group using the dropdowns. Once a Term has been selected you can hover over the help ('?') icon to see the full details of that Term.

If you decide you would like to revert to using the same Term for all Buying Groups, re-check the Use same Term for all Buying Groups option.

4.1.6.2 Deleting an Offer Row

If you would like to delete an offer row, click on the red cross at the end of the row. You will be asked for confirmation before the row is deleted.

4.1.6.3 General

Once you have completed your Offer Prices, Volume Price Breaks, Discounts and Terms click 'Save & Continue' to save your Price Submission and go to the next stage.

4.1.7 Stage 6 - Manufacturing Lead Times

A Manufacturing Lead Time is the time required by your company to manufacture and release sufficient product to cover orders for the lots for which you are making an offer.

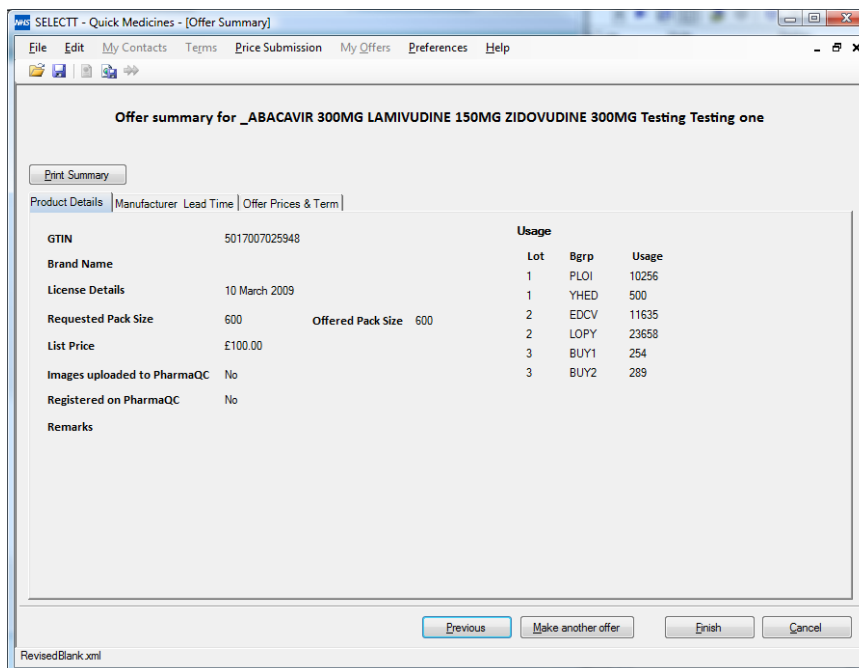
Manufacturing Lead Times are only applicable on certain Tenders therefore you may not see this stage.

If they are applicable you must enter your lead time for each Lot that you have given an offer price for. The lead time is a free text field and can be up to 50 characters long.

Once you have completed the lead times, click 'Save & Continue' to save your Price Submission and go to the next stage.

4.1.8 Stage 7 - Offer Summary

Once you have entered a full offer against an product you will then be shown a summary of your offer, as in the following screenshot.



The summary is split across 3 tabs for easier viewing, click on each tab to view that tabs details.

At this stage you have 4 options:

- Previous
- Make another offer
- Finish
- Cancel

4.1.8.1 Previous

If you would like to make an amendment to the current offer you can use the 'Previous' button to go back to the previous stage. You can go back all the way to your Product Basket but will lose the details of each stage you go previous from. If you want to keep the majority of your products offer, it will be easier to select make another offer and reselect your now fully completed product offer from your basket. You can then navigate to the appropriate stage, make amendments as necessary, and save and continue in the normal way.

4.1.9 Stage 8 - Make another offer

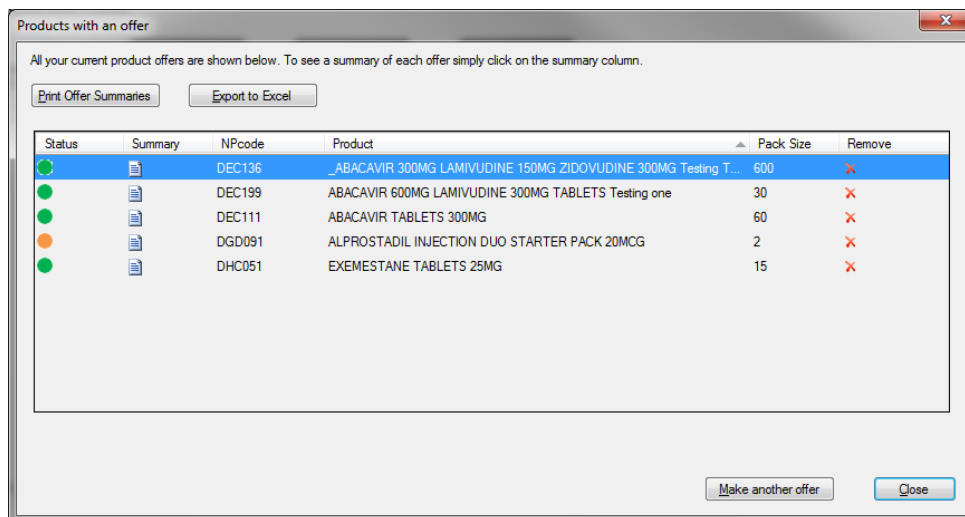
If you would like to make another offer click the 'Make another offer' button and you will be returned to your product basket where you can continue to make another offer.

4.1.10 Stage 9 - Finish

If you have finished entering all your product offers, click the 'Finish' button to be taken to the export stage, which is covered in the section [Exporting your Price Submission from SELECTT](#)

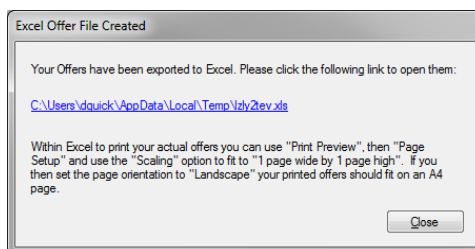
4.2 Viewing Your Offers

Once you have made one offer the My Offers menu will be enabled. Clicking this will show you a list of all the products you have made an offer against. You can view the summary of each offer by clicking in the summary column. You also have the option of removing an offer from this screen.



4.2.1 Export To Excel

If you have Excel installed you can now export your offers. Simply click on the **Export to Excel** button. This may take a few seconds if you have lots of offers. A spreadsheet will be created and a link to it displayed:



In addition to displaying all your offers, term details and Buying Group information are also shown on separate sheets.

5 Submitting Your Offer Back to NHS MPSC

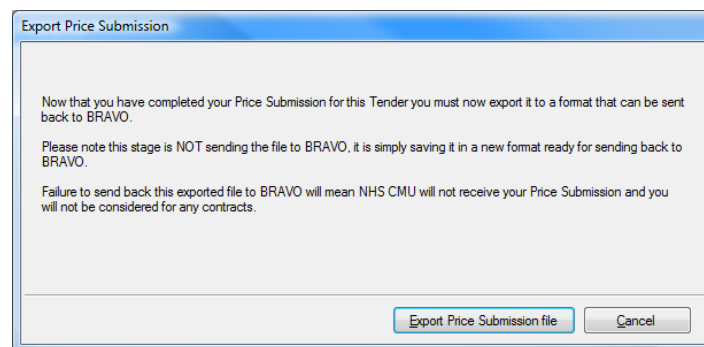
5.1 Exporting your Price Submission from SELECTT

Before you can send your Price Submission back to NHS MPSC you must first export it from SELECTT in to a **new format** on **your computer**. This new format will have the file extension “*.cmu”. Please note that exporting **DOES NOT SEND YOUR FILE BACK TO ATAMIS**, it generates your Price Submission locally so that you can then manually submit it to ATAMIS.

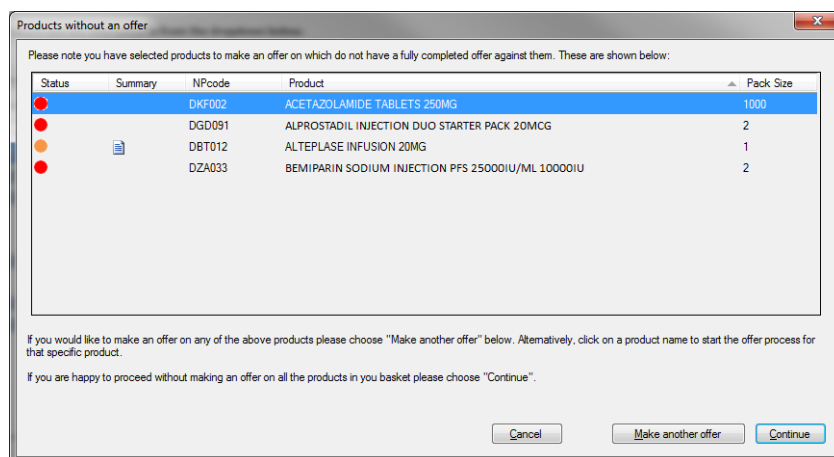
To export your Price Submission you have two options:

- Click the Export button when not in the offer wizard
- Click the Export Price Submission entry on the File menu
- Click the Finish Button when you are in the offer wizard

In either case, you will then be shown the export screen:



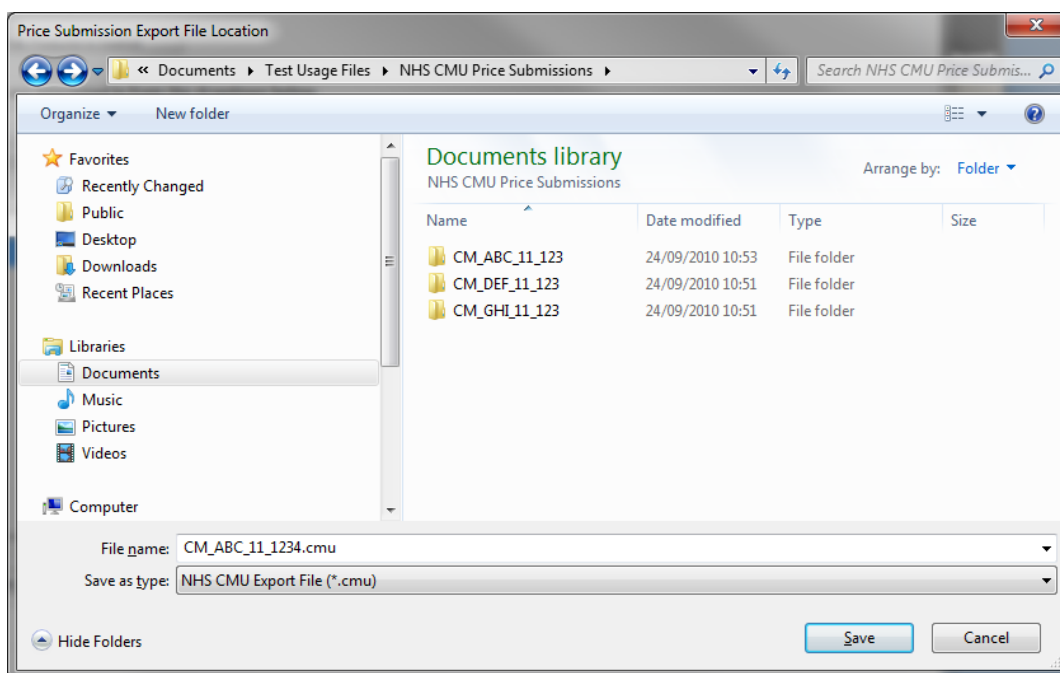
When you click the ‘Export Price Submission’ file button, if you have any products in your basket without a fully completed offer you will be shown a screen listing them:



If you would like to make an offer on any of the products listed, you have two options:

- Click the ‘Make another offer’ button to return to your product basket
- Click on any ‘Product’ to be taken to start the offer wizard for that product

If you would like to continue without making any more offers, please click the 'Continue' button. The following screen is shown:



A standard 'Save as' dialog is now shown where you can select the folder you would like to export your Price Submission. Please note the filename has automatically been created for you, and consists of the Tender Code followed by your Supplier Code. We recommend you leave this filename as is.

Please note the file type has defaulted to "*.cmu", indicating this is a NHS CMU Export file. It is this file that has to be uploaded to ATAMIS. You cannot read this file back into SELECTT - once exported this file cannot be used with SELECTT again.

You can, however, continue using your Xml file with SELECTT if you would like to make further amendments.

On successfully exporting your Price Submission, you are reminded that you must now send this back to ATAMIS (following the familiar online ATAMIS submission process). When you OK this dialog, SELECTT will close your Price Submission.

