

SCHEDULE 2 – THE SERVICES

A. Service Specifications

1. Service name	Specialised Burn Care (Adults)
2. Service specification number	D06/S/a – 230502S
3. Date published	17/05/2023
4. Accountable Commissioner	NHS England Trauma PoC webpage

5.	Population and/or geography to be served
5.1	Population Covered This service specification relates to adults aged 18 years and over. Children aged between 16-18 years old may be treated in an adult burn service and will be considered on a case-by-case basis, depending on local policy.
5.2	Minimum population size Not used
6.	Service aims and outcomes
6.1	Service aims The aim of the service is to deliver multi-disciplinary specialist care to adults after burn injury, covering the whole patient pathway from referral to completion of care. The above aim will be achieved by: <ul style="list-style-type: none"> • Delivering treatment and care that conforms to national standards and published clinical guidelines. • Being responsive to the psychological needs of service users and their families • Delivering care holistically, ensuring that all service users have access to a wide range of specialist multi-disciplinary services. • Encouraging an environment in which the service user and their families are supported, to be able to make decisions about their treatment, based upon evidence-based interventions and including risks, benefits, and consequences of options. • Facilitating on-going care near to the service users own community where clinically appropriate. • Where appropriate, supporting the return of the service user to their pre-injury employment / occupational performance, educational and social groups.

- Delivering the appropriate elements of specialist burn care treatment as part of a recognised managed clinical network.
- Ensuring equity of access to specialised burn care for adult service users.
- Responding effectively to major incidents involving adult burn casualties.
- Ensuring good quality and specialised burn care is delivered in both the inpatient and outpatient setting until the service user no longer requires specialised burn care.
- Working with relevant agencies to support prevention initiatives.

6.2 Outcomes

NHS Outcomes Framework Domains & Indicators

Domain 1	Preventing people from dying prematurely
Domain 2	Enhancing quality of life for people with long-term conditions
Domain 3	Helping people to recover from episodes of ill-health or following injury
Domain 4	Ensuring people have a positive experience of care
Domain 5	Treating and caring for people in safe environment and protecting them from avoidable harm

Service defined outcomes/outputs

Quality Metrics: The service will complete / upload data for all listed quality metrics to the national Specialised Services Quality Dashboard (SSQD). The full version of the quality metrics and their descriptions including the numerators and denominators can be accessed at <https://www.england.nhs.uk/commissioning/spec-services/npc-crg/spec-dashboards/>

Commissioned providers are required to participate in annual quality assurance and collect and submit data to support the assessment of compliance with the service specification as set out in Schedule 4A-C.

Clinical Outcome Metrics - quantitative data			
Number of adult admissions who died and were calculated to be unexpected deaths	IBID	Domain 5	Effective
Number of adult admissions who survived calculated as being unexpected	IBID	Domain 5	Effective

7. Service description

7.1 Service model

The service is delivered through recognised specialised care providers, to ensure service users have equity of access and receive parity of service. Services providing specialised adult burn care must comply with the latest guidance and essential standards of care, for different aspects of the care pathway. These standards have been developed by burns and other healthcare professionals and describe how health care for adults generally, and specialised burn care specifically, should be delivered. These standards cover:

- Patient centred care, covering the planning of burn care and the support that service users and families can expect to receive.

	<ul style="list-style-type: none"> • The Multi-disciplinary Team, covering clinical leadership, access to surgeons, intensivists, anaesthetists, nurses, specialist physiotherapy and occupational therapy staff, dietitians, and psychology professionals, to provide the full range of physical and psychosocial care for burn service users. • Inter-dependent Services, indicating the wide range of clinical services required for each level of service, as described at Section 7.6. • Facilities, Resources and the Environment, necessary to provide specialised burn care. • Policies and Procedures, necessary to provide effective burn care. • Clinical Governance, referring to audit, research, data collection and analysis.
7.2	<p>Pathways</p> <p><u>Overall patient pathway</u></p> <p>Specialist adult burn care services include all adult burn care delivered by Burn Centres, Burn Units and Burn Facilities delivered as part of an Operational Delivery Network. This covers the whole pathway, including:</p> <ul style="list-style-type: none"> • Specialist assessment • Admission to a Centre, Unit or Facility • Rehabilitation (within the burns service). • Outpatients and Outreach <p>Burn Facilities</p> <p>Provide acute care for people with less complex burns in line with National Burn Care Referral Guidance 2012 https://www.britishburnassociation.org/national-burn-care-referral-guidance/ ⁽¹⁾. Burn Facilities refer service users to Burn Units and Centres for the treatment of more complex injuries (in line with national and local threshold guidance). Burn Facilities are an integral part of the patient pathway in the provision of a rehabilitation service for some of the service users from their local area who have more complex injuries, once repatriated to them from either Burn Units or Centres.</p> <p>Burn Units</p> <p>Burn Units provide care for service users with a burn of moderate size and/or moderate severity in line with National Burn Care Referral Guidance 2012 ⁽¹⁾. These services treat service users across a wider geographical area than Burn Facilities and provide treatment for patients requiring critical care (such as care in a high dependency unit). They also provide facility-level care for their more local population and are an integral part of the patient pathway in the provision of a rehabilitation service for some of the service users from their local area who have more complex injuries, once repatriated to them from either another burn unit or centre.</p> <p>Burn Centres</p> <p>Burn Centres provide care for service users with the most severe injuries and for those requiring the highest level of critical care in line with National Burn Care Referral Guidance 2012 ⁽¹⁾. They also provide unit and facility-level care for their more local population.</p>

Outpatient and Outreach

Specialised outpatients burn care, if required, must be provided post discharge and on an ongoing basis or at a future point, dependent on individual service user needs. There should be an integrated MDT outreach service which can facilitate the delivery of specialised burn care and advice to patients, their families and /or carers in an area other than the acute hospital environment providing specialised burn care. This can be in-person or by electronic / remote means if appropriate.

Non-burns Skin Loss

Specialised Burn Care services also provide care for people with non-burns skin loss. NHS England commissions services for service users with toxic epidermal necrolysis and Stevens Johnson Syndrome, when they are treated in a specialist burn care service. There is a separate service specification for these conditions.

<https://www.england.nhs.uk/wp-content/uploads/2018/06/service-specification-stevens-johnson-syndrome-toxic-epidermal-necrolysis.pdf>).

Other non-burns skin loss conditions, including purpura fulminans, severe staphylococcal scalded skin syndrome and necrotising fasciitis, where treatment is currently undertaken by a specialised burn service, are also commissioned by NHS England.

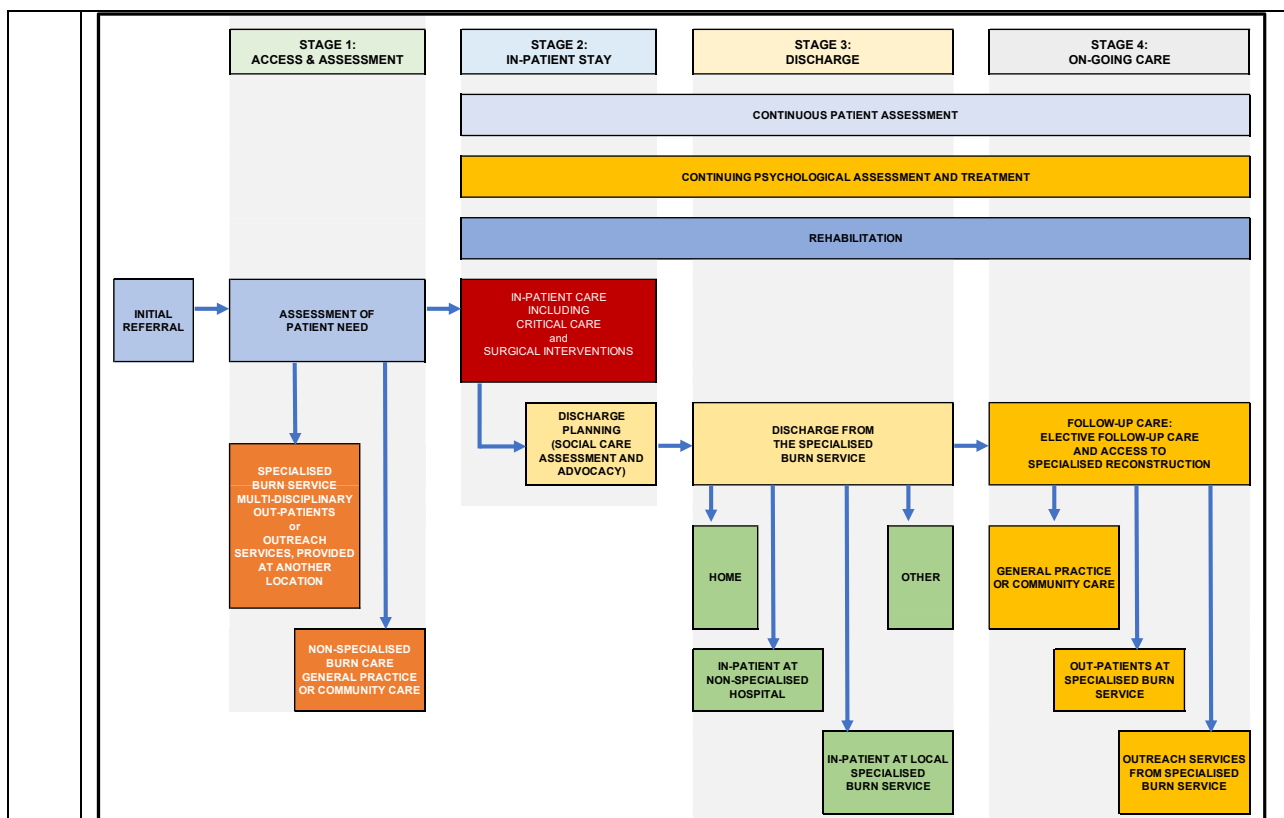
Discharge Planning, Continuing Care and Rehabilitation

Service users will remain at the specialised burn service in which they have received their care until it is appropriate for either initiation of discharge or transfer to another appropriate specialised burn service (or a non-specialised service such as a local hospital) closer to home or to a specialised rehabilitation service.

A Burns Rehabilitation Prescription should be produced for service users with a burn injury and requiring ongoing rehabilitation. A copy should be provided to the organisation providing rehabilitation services and the service user and their General Practitioner. It should be noted that some aspects of the post-acute pathway might include continuing care provided at home (community care) and although this is not covered by specialised commissioning, it is an important element of the care pathway.

Specialised patient pathway

The Burn Care pathway can be illustrated as follows:



Transition

All healthcare services are required to deliver developmentally appropriate healthcare to patients and families. Children and young people with ongoing healthcare needs may present direct to adult services or may be required to transition into adult services from children’s services.

Transition is defined as a ‘purposeful and planned process of supporting young people to move from children’s to adults’ services’. Poor planning of transition and transfer can result in a loss in continuity of treatment, patients being lost to follow up, patient disengagement, poor self-management and inequitable health outcomes for young people. It is therefore crucial that adult and children’s NHS services, in line with what they are responsible for, plan, organise and implement transition support and care (for example, holding joint annual review meetings with the child/young person, their family/carers, the children’s and adult service). This should ensure that young people are equal partners in planning and decision making and that their preferences and wishes are central throughout transition and transfer. NICE guidelines recommend that planning for transition into adult services should start by age 13-14 at the latest, or as developmentally appropriate and continue until the young person is embedded in adult services.

7.3	Clinical Networks The provider is required to participate in the Burns Care Clinical Network and to adhere to its service specification'																				
7.4	Essential Staff Groups Specialised burn care services must be compliant with all of the essential standards for staffing, described in the following documents and reports, or the most recently revised version: <ul style="list-style-type: none"> • British Burn Association Standards and Outcomes (2018), related to all phases and aspects of the delivery of care for adults.⁽²⁾ • Standards of Physiotherapy and Occupational Therapy Practice in the Management of Burn Injured Adults and Children 2022. ⁽³⁾ • Guidelines for the Provision of Anaesthesia Services for Burn and Plastics Surgery ⁽⁴⁾ • Adult Critical Care Specification, May 2022 ⁽⁵⁾ • Adult Critical Care Transfer Specification, May 2022 ⁽⁶⁾ 																				
7.5	Essential equipment and/or facilities Specialised burn care services must be compliant with all of the essential standards of care, described in the following documents and reports, or the most recently revised version: <ul style="list-style-type: none"> • British Burn Association Standards and Outcomes (2018), related to all phases and aspects of the delivery of care for adults ⁽²⁾ 																				
7.6	Interdependent Service Components – Links with other NHS services Aligned to the British Burn Association (BBA) Standards and Outcomes (2018) ⁽²⁾ , adult burn care services must be compliant with a series of essential co-located and / or interdependent services. <i>The following services are available at all times, on the same site as the Burn Care Service:</i> <table border="1" data-bbox="280 1357 1461 2038"> <thead> <tr> <th data-bbox="280 1357 603 1402">Level of Burn Care</th> <th data-bbox="603 1357 1461 1402">Co-location and co-dependent services</th> </tr> </thead> <tbody> <tr> <td data-bbox="280 1402 603 1480">Centre</td> <td data-bbox="603 1402 1461 1480">The Burn Care Service is co-located with Adult Critical Care facilities.</td> </tr> <tr> <td data-bbox="280 1480 603 1615">Unit</td> <td data-bbox="603 1480 1461 1615">The burn service is co-located with Adult High Dependency facilities and has access to Adult ICU facilities.</td> </tr> <tr> <td data-bbox="280 1615 603 1693">Facility</td> <td data-bbox="603 1615 1461 1693">The Burn Care Service has access to Intensive Care / High Dependency facilities.</td> </tr> <tr> <td data-bbox="280 1693 603 1783">All Levels</td> <td data-bbox="603 1693 1461 1783">The Burn Care Service is co-located with a Major Trauma Unit or an Major Trauma Centre.</td> </tr> <tr> <td data-bbox="280 1783 603 1827">All Levels</td> <td data-bbox="603 1783 1461 1827">Emergency Medicine.</td> </tr> <tr> <td data-bbox="280 1827 603 1872">All Levels</td> <td data-bbox="603 1827 1461 1872">General Surgery</td> </tr> <tr> <td data-bbox="280 1872 603 1917">All Levels</td> <td data-bbox="603 1872 1461 1917">General Medicine</td> </tr> <tr> <td data-bbox="280 1917 603 1962">All Levels</td> <td data-bbox="603 1917 1461 1962">Trauma and Orthopaedic Surgery.</td> </tr> <tr> <td data-bbox="280 1962 603 2038">Centres & Units</td> <td data-bbox="603 1962 1461 2038">Radiology with Advanced Scanning Facilities (e.g. Computed Tomography Scan (CT)).</td> </tr> </tbody> </table>	Level of Burn Care	Co-location and co-dependent services	Centre	The Burn Care Service is co-located with Adult Critical Care facilities.	Unit	The burn service is co-located with Adult High Dependency facilities and has access to Adult ICU facilities.	Facility	The Burn Care Service has access to Intensive Care / High Dependency facilities.	All Levels	The Burn Care Service is co-located with a Major Trauma Unit or an Major Trauma Centre.	All Levels	Emergency Medicine.	All Levels	General Surgery	All Levels	General Medicine	All Levels	Trauma and Orthopaedic Surgery.	Centres & Units	Radiology with Advanced Scanning Facilities (e.g. Computed Tomography Scan (CT)).
Level of Burn Care	Co-location and co-dependent services																				
Centre	The Burn Care Service is co-located with Adult Critical Care facilities.																				
Unit	The burn service is co-located with Adult High Dependency facilities and has access to Adult ICU facilities.																				
Facility	The Burn Care Service has access to Intensive Care / High Dependency facilities.																				
All Levels	The Burn Care Service is co-located with a Major Trauma Unit or an Major Trauma Centre.																				
All Levels	Emergency Medicine.																				
All Levels	General Surgery																				
All Levels	General Medicine																				
All Levels	Trauma and Orthopaedic Surgery.																				
Centres & Units	Radiology with Advanced Scanning Facilities (e.g. Computed Tomography Scan (CT)).																				

	Facility	Radiology.
	All Levels	Integrated (Acute and Chronic) Pain Service.
	All Levels	Respiratory Physiotherapy Service.
	Centres & Units	Renal services (including replacement therapy).
	All Levels	Infection Prevention and Control (IPC) Services.
	All Levels	Liaison Mental Health Service (Acute and Community).
	All Levels	Transfusion Service.
	All Levels	Biochemistry.
	All Levels	Haematology.
	<i>The following services must be available to the burn care service in a timely manner:</i>	
	Level of Burn Care	Co-location and co-dependent services
	All Levels	Neurology.
	All Levels	Neurosurgery.
	All Levels	Cardiothoracic surgery.
	All Levels	Ophthalmology.
	All Levels	Maxillofacial surgery.
	All Levels	Dermatology.
	All Levels	Speech and language therapy.
	All Levels	ENT.
	All Levels	Medical illustration/photography.
	All Levels	Microbiology.
	All Levels	Prosthetic service.
	All Levels	Obstetrics and Gynaecology.
	All Levels	Urology.
	Centre	Extracorporeal membrane oxygenation (ECMO)
7.7	Additional requirements Collaborative arrangements and networking <p>To ensure alignment with the paediatric specification, adult burn services must work in close affiliation with the local paediatric burn centre, within the local ODN, which manages children with major burn injuries. There must be evidence of the adult service providing paediatric surgeons the opportunity for:</p> <ul style="list-style-type: none"> • A regular clinical commitment at an adult burn service, including exposure to ward rounds, operative management and rehabilitation. <p>Adult burn services must also support other staff working within the paediatric burns MDT, including paediatric intensivists, at the recognised paediatric burn centre. In line with the paediatric specification, paediatric centre staff must be given the opportunities for:</p> <ul style="list-style-type: none"> • Hands-on experience, through role specific shadowing / observing on ward rounds, operative management and rehabilitation. • Shared education and training. 	

	<ul style="list-style-type: none"> Peer support through joint audit. <p>Network and National Audit In addition to service and network Burns Mortality and Morbidity (M&M) audit, all adult burn services must participate in an annual, national M&M meeting.</p>																																		
7.8	<p>Commissioned providers The list of commissioned providers for the services covered by this specification as at the date of publication of the specification are as follows:</p> <p>Burn Care Facilities</p> <table border="1" data-bbox="280 645 1469 1133"> <thead> <tr> <th>Trust</th> <th>Hospital</th> </tr> </thead> <tbody> <tr> <td>Lancashire Teaching Hospitals NHS Foundation Trust</td> <td>Royal Preston Hospital, Lancashire</td> </tr> <tr> <td>Oxford University Hospitals NHS Foundation Trust</td> <td>John Radcliffe Hospital, Oxford</td> </tr> <tr> <td>South Tees Hospital NHS Foundation Trust</td> <td>James Cook University Hospital, Middlesbrough</td> </tr> <tr> <td>University Hospitals of Leicester NHS Trust</td> <td>Leicester Royal Infirmary, Leicester</td> </tr> <tr> <td>University Hospitals of North Midlands NHS Trust</td> <td>Royal Stoke University Hospital</td> </tr> <tr> <td>University Hospitals Plymouth NHS Trust</td> <td>Derriford Hospital, Plymouth</td> </tr> </tbody> </table> <p>Burn Care Units</p> <table border="1" data-bbox="280 1205 1469 1731"> <thead> <tr> <th>Trust</th> <th>Hospital</th> </tr> </thead> <tbody> <tr> <td>Buckinghamshire Healthcare NHS Trust</td> <td>Stoke Mandeville Hospital, Aylesbury</td> </tr> <tr> <td>North Bristol NHS Trust</td> <td>Southmead Hospital, Bristol</td> </tr> <tr> <td>Nottingham University Hospitals NHS Trust</td> <td>Nottingham City Hospital Nottingham</td> </tr> <tr> <td>Queen Victoria Hospital NHS Foundation Trust</td> <td>Queen Victoria Hospital, East Grinstead, Sussex</td> </tr> <tr> <td>Salisbury NHS Foundation Trust</td> <td>Salisbury District Hospital, Salisbury</td> </tr> <tr> <td>Sheffield Teaching Hospitals NHS Foundation Trust</td> <td>Northern General Hospital, Sheffield, South Yorkshire</td> </tr> </tbody> </table> <p>Burn Care Centres</p> <table border="1" data-bbox="280 1803 1469 1977"> <thead> <tr> <th>Trust</th> <th>Hospital</th> </tr> </thead> <tbody> <tr> <td>Chelsea & Westminster Hospital NHS Foundation Trust</td> <td>Chelsea & Westminster Hospital, London</td> </tr> <tr> <td>Manchester University NHS Foundation Trust</td> <td>Wythenshawe Hospital, South Manchester</td> </tr> </tbody> </table>	Trust	Hospital	Lancashire Teaching Hospitals NHS Foundation Trust	Royal Preston Hospital, Lancashire	Oxford University Hospitals NHS Foundation Trust	John Radcliffe Hospital, Oxford	South Tees Hospital NHS Foundation Trust	James Cook University Hospital, Middlesbrough	University Hospitals of Leicester NHS Trust	Leicester Royal Infirmary, Leicester	University Hospitals of North Midlands NHS Trust	Royal Stoke University Hospital	University Hospitals Plymouth NHS Trust	Derriford Hospital, Plymouth	Trust	Hospital	Buckinghamshire Healthcare NHS Trust	Stoke Mandeville Hospital, Aylesbury	North Bristol NHS Trust	Southmead Hospital, Bristol	Nottingham University Hospitals NHS Trust	Nottingham City Hospital Nottingham	Queen Victoria Hospital NHS Foundation Trust	Queen Victoria Hospital, East Grinstead, Sussex	Salisbury NHS Foundation Trust	Salisbury District Hospital, Salisbury	Sheffield Teaching Hospitals NHS Foundation Trust	Northern General Hospital, Sheffield, South Yorkshire	Trust	Hospital	Chelsea & Westminster Hospital NHS Foundation Trust	Chelsea & Westminster Hospital, London	Manchester University NHS Foundation Trust	Wythenshawe Hospital, South Manchester
Trust	Hospital																																		
Lancashire Teaching Hospitals NHS Foundation Trust	Royal Preston Hospital, Lancashire																																		
Oxford University Hospitals NHS Foundation Trust	John Radcliffe Hospital, Oxford																																		
South Tees Hospital NHS Foundation Trust	James Cook University Hospital, Middlesbrough																																		
University Hospitals of Leicester NHS Trust	Leicester Royal Infirmary, Leicester																																		
University Hospitals of North Midlands NHS Trust	Royal Stoke University Hospital																																		
University Hospitals Plymouth NHS Trust	Derriford Hospital, Plymouth																																		
Trust	Hospital																																		
Buckinghamshire Healthcare NHS Trust	Stoke Mandeville Hospital, Aylesbury																																		
North Bristol NHS Trust	Southmead Hospital, Bristol																																		
Nottingham University Hospitals NHS Trust	Nottingham City Hospital Nottingham																																		
Queen Victoria Hospital NHS Foundation Trust	Queen Victoria Hospital, East Grinstead, Sussex																																		
Salisbury NHS Foundation Trust	Salisbury District Hospital, Salisbury																																		
Sheffield Teaching Hospitals NHS Foundation Trust	Northern General Hospital, Sheffield, South Yorkshire																																		
Trust	Hospital																																		
Chelsea & Westminster Hospital NHS Foundation Trust	Chelsea & Westminster Hospital, London																																		
Manchester University NHS Foundation Trust	Wythenshawe Hospital, South Manchester																																		

Mid and South Essex Hospital Services NHS Trust	Broomfield (St Andrews) Hospital, Chelmsford, Essex
The Mid Yorkshire Hospitals NHS Trust	Pinderfields Hospital, Wakefield, West Yorkshire
The Newcastle upon Tyne Hospitals NHS Foundation Trust	Royal Victoria Infirmary, Newcastle-Upon-Tyne
St Helens & Knowsley Teaching Hospitals NHS Foundation Trust	Whiston Hospital, Liverpool
Swansea Bay University Health Board	Morrison Hospital, Swansea, Wales
University Hospitals Birmingham NHS Foundation Trust	Queen Elizabeth Hospital, Birmingham

7.9 Links to other key documents

Please refer to the [Prescribed Specialised Services Manual](#) for information on how the services covered by this specification are commissioned and contracted for.

Please refer to the Identification Rules tool for information on how the activity associated with the service is identified and paid for. NHS England Directly commissioned services service codes can be found [here](#)

Please refer to the relevant Clinical Reference Group [webpages](#) for NHS England Commissioning Policies which define access to a service for a particular group of service users.

The specific clinical guidelines and policies that relate to the services covered by this service specification include:

1. National Network for Burn Care, Burn Care Referral Guidelines 2012
2. <https://www.britishburnassociation.org/national-burn-care-referral-guidance/>
3. British Burn Association National Standards for Provision and Outcomes in Adult and Paediatric Burn Care 1st Edition. 2018
4. <https://www.britishburnassociation.org/standards/>
5. British Burn Association Standards of Physiotherapy and Occupational Therapy Practice in the Management of Burn Injured Adults and Children 2022
6. <https://www.britishburnassociation.org/standards-of-physiotherapy-occupational-therapy-practice/>
7. RCOA Guidelines for the Provision of Anaesthesia Services for Burn and Plastics Surgery, RCOA Chapter 17, 2022
8. <https://rcoa.ac.uk/gpas/chapter-17>
9. Adult Critical Care Specification <https://www.england.nhs.uk/wp-content/uploads/2019/05/220502S-adult-critical-care-service-specification.pdf>
10. Adult Critical Care Transfer services <https://www.england.nhs.uk/wp-content/uploads/2021/06/220501S-Adult-critical-care-transfer-services.pdf>

Additionally, services must comply with the formally recognised process to facilitate the transition of children and young people to the adult burn care service. This is based on NICE Guidance and follows local policies and procedures.

Applicable Obligatory National Standards

- National Institute for Health and Care Excellence (NICE) Technical Appraisal Guidance
- Mandatory accreditation requirements.

Change form for published Specifications and Products developed by Clinical Reference Group (CRGs)

Product name: **Specialised Burn Care (Adults)**

Publication number:

CRG Lead: **Trauma Programme of Care Manager**

Description of changes required

Describe what was stated in original document	Describe new text in the document	Section/Paragraph to which changes apply	Describe why document change required	Changes made by	Date change made
The format of the service specification has changed due to the content of the previous specification being transferred into the current NHS England Specialised Service Specification Template			The format of the service specification has changed due to the content of the previous specification being transferred into the current NHS England Specialised Service Specification Template. As a consequence, some section headings have been renamed and/or are in a different location within the specification document	Specification Working Group	Dec 2022
Adult burn care has been included within an “all ages” specification, since 2013 (d06-spec-burn-care-0414).	The “all ages” specification has been amended in content and format, to sit within the new NHSE specification template.	The “all ages” specification has been amended in content and format, to sit within the new NHSE specification template.	In 2022, a new paediatric specification was developed and approved.	As above	As above

In 2022, a new paediatric specification was developed and approved.		This has impacted on the whole document.			
Describe what was stated in original document	Describe new text in the document	Section/Paragraph to which changes apply	Describe why document change required	Changes made by	Date change made
Section 1.1 National/local context and evidence base	The new specification has a short statement related to the population covered.	New Section 5.1 Population Covered Page 1	To reflect new national format for service specifications.	As above	As above
Section 2 Outcomes This section refers to the Quality Dashboard for 2013-2014.	This section is reflected in the new template, at section 6.2	New Section 6.2 Outcomes Page 2	Reflects Adult Burn care Specialised Services Quality Dashboards (SSQD)	As above	As above
Section 3.1 Scope (Aims and objectives)	Aims and objectives: This section is reflected in the new template.	New Section 6.1 Service Aims Page 1	To reflect new national format for service specifications	As above	As above
Section 3.2 Service description / care pathway	Care Pathway: This section is reflected in the new template.	New Section 7.2 Pathways Page 3	As above	As above	As above
Section 3.2 Service description / care pathway	The information relating to the structure of the service in line with guidance related to thresholds of care is included in the new	New Section 7.2 Pathways Page 3	As above	As above	As above

Describe what was stated in original document	Describe new text in the document	Section/Paragraph to which changes apply	Describe why document change required	Changes made by	Date change made
	template, at section 7.2 (Pathways)				
Section 3.2 Service description / care pathway (Resources)	The new template refers to the essential standards written in the 2018 BBA Standards of Care and Outcomes. The new template does not require a detailed explanation of the individual resources required at each level of care.	New Section 7.4 Page 6	As above	As above	As above
Section 3.2 Service description / care pathway (On-site support services)	Essential inter-dependent services are listed in the new template at Section 7.6	New Section 7.6 Interdependent Service Components – Links with other NHS services Page 6	As above	As above	As above
Section 3.2 Service description / care pathway (Staffing – Burn Units)	The new template refers to the essential standards written in the 2018 BBA Standards of Care and Outcomes. The new template does not require a detailed explanation of the individual staffing	New Section 7.4 Essential Staff Groups Page 6	As above	As above	As above

	requirements at each level of care.				
Describe what was stated in original document	Describe new text in the document	Section/Paragraph to which changes apply	Describe why document change required	Changes made by	Date change made
Section 3.2 Service description / care pathway (The Burn Care Network)	The burn care network (ODN) is reflected in the new template at section 7.3	New Section 7.3 Clinical Networks Page 5	As above	As above	As above
Section 3.2 Service description / care pathway (General Paediatric care)	All paediatric care is now included in an age-specific children's burn care specification.		Paediatric burn care now has its own specification		
Section 3.2 Service description / care pathway (Audit, Governance and Quality Improvement)	Audit governance and quality improvement: this is not a section required in the new template and it has been removed. These issues are reflected in the BBA Standards and in Section 7.7 of the new template which includes content related to the ODN	New Section 7.7 Additional requirements Collaborative arrangements and networking Page 7	As above	As above	As above
Describe what was stated in original document	Describe new text in the document	Section/Paragraph to which changes apply	Describe why document change required	Changes made by	Date change made

<p>Section 3.2 (Service Description / care pathway (Education and training))</p> <p>The 2013 document refers to competency frameworks and training plans, for staff in the MDT, and refers to the 2013 Burn Care Standards.</p>	<p>Education and training: this is not a section required in the new template and it has been removed. These issues are reflected in the BBA Standards and in Section 7.7 of the new template which includes content related to the ODN.</p>	No longer required	<p>Services are already working to the BBA standards of care and have been since 2019-2020.</p> <p>This brings the Specialised Burn Care (Adults) specification into line with the Specialised Burn Care (Children) specification.</p>	As above	
<p>Section 3.3 Population covered</p>	<p>The new specification has a short statement related to the population covered. New Section 5.1</p>	New Section 5.1 Population covered Page 1	To reflect new national format for service specifications	As above	
<p>Section 3.4 Any acceptance and exclusion criteria and thresholds (Exclusion criteria)</p>	<p>Exclusion criteria: this is not a section required in the new template and it has been removed.</p>	No longer required	As above	As above	
<p>Section 3.5 Interdependencies with other services/providers</p>	<p>Essential inter-dependent services are listed in the new template at Section 7.6</p>	New Section 7.6 Interdependent Service Components – Links with other NHS services Page 6	As above	As above	
<p>Describe what was stated in original document</p>	<p>Describe new text in the document</p>	<p>Section/Paragraph to which changes apply</p>	<p>Describe why document change required</p>	<p>Changes made by</p>	<p>Date change made</p>

<p>Section 4 Applicable service standards</p> <p>The 2013 document refers to National Burn Care Standards 2013.</p> <p>These NHS England Standards have been superseded by professional standards of care, published by the British Burn Association (BBA)</p>	<p>Service standards are reflected in the new template at section 7.4 and 7.9</p>	<p>New Section 7.4 Essential Staff Groups and 7.5 Essential equipment and/or facilities Page 6</p>	<p>The 2013 standards were owned and published by NHS England. The new standards are owned and published as professional standards of care, by the British Burn Association (BBA).</p> <p>This work was undertaken at the request of the Chair of the Trauma & Burns CRG.</p> <p>Services are already working to these standards of care, and have been since 2019-2020</p> <p>This brings the adult burns specification into line with the paediatric burns specification.</p>	<p>As above</p>	
<p>N/a</p>	<p>A new paragraph has been inserted, explaining that SJS / TENS and other medical skin loss is covered by a separate service specification</p>	<p>Section 7.2 Pathways Page 4</p>	<p>Brings into line with Specialised Burn Care (Children's) burns specification.</p>		
<p>N/a</p>	<p>A new paragraph has been included setting</p>	<p>Section 7.2 Pathways Page 5</p>	<p>This is a standard paragraph to be included in all</p>		

	out the requirements for transition from children to adult services.		appropriate service specifications		
N/a	New section in the adult specification, related to collaboration with paediatric centres.	Section 7.7 Additional requirements - Collaborative arrangements and networking Page 7	This is included to reciprocate with content in the paediatric specification, related to collaboration with adult services, caring for complex cases.	As above	
Annex 1 to the Service Specification. The annex is entirely focused on children's services.	This annex has been removed. The new specification for 2022-2023 is applicable only to adults	No longer relevant	Annex 1 to the Service Specification. The annex is entirely focused on children's services. NHSE have approved a new paediatric burn care specification, replacing reference to children from the original document.		
Document references	Due to the proposed changes, a number of referenced academic papers are no longer relevant	No longer relevant	The academic papers are not relevant to the Specialised Burn Care (Adults) specification		