

Mouth care guide

Once the mouth check has been completed, check this guide for actions going forward:

Green - Low Risk



Clean teeth

Continue with regular mouth care routine

Amber - Medium Risk

Teeth



Some plaque and tartar present

Discuss at next remote oral health check-in

Red - High Risk



Decayed, broken teeth

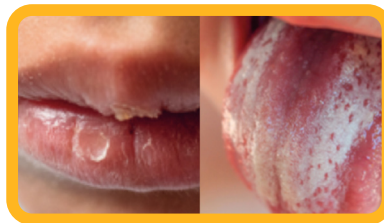
Speak to senior regarding bringing remote oral health check-in forward

Lips, tongue and soft tissues (inside of cheeks, roof of mouth, underneath tongue)



Smooth, moist, clean

Continue with regular mouth care routine



Dry, cracked lips or coated tongue

Encourage sips of water (if able to), apply dry mouth gel around the mouth regularly. Brush tongue and consider bringing remote oral health check-in forward if tongue is coated.



Sore, ulcerated lips or tongue

Speak to senior regarding bringing remote oral health check-in forward

Gums



Firm gums, no bleeding

Continue with regular mouth care routine



Some bleeding, on brushing, slightly inflamed

Try to improve brushing



Puffy, inflamed gums with lots of bleeding or gum swelling present

Speak to senior regarding bringing remote oral health check-in forward
If gum swelling present, follow local protocol and arrange urgent dental care

Saliva



Mouth moist, visible saliva

Continue with regular mouth care routine



Visibly dry mouth

Encourage sips of water (if able to), apply dry mouth gel around the mouth regularly - onto tongue and inside of cheeks



Thick, stringy saliva

Same actions as amber, if not improving speak to senior regarding bringing remote oral health check-in forward

