

# Improving mouth care for children and young people in residential special education settings

A guide for support workers



## **What is the Mini Mouth Care Matters programme?**

Mini Mouth Care Matters is a programme developed to ensure children and young people have a healthy mouth, including all children and young people in special residential schools and autistic children, and children with a learning disability.

## **What are the aims of the initiative?**

1. To provide training for support workers and staff members with practical tips on how to carry out mouth care.
2. To ensure that children and young people in residential special education settings are receiving daily effective toothbrushing – with assistance where necessary.

## **Why is having a healthy mouth important?**

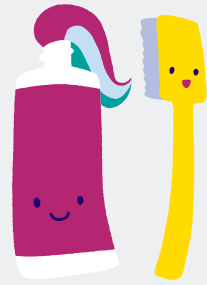
Having a healthy mouth helps us to eat, speak, socialise and smile. It can also affect our confidence. If not looked after, dental problems can occur, for example toothache and gum disease.

## **Did you know?**

Dental problems are almost entirely preventable if we can ensure effective daily mouth care is provided, along with a healthy, balanced diet. A child or young person with a learning disability, autism or both may not be able to communicate when suffering from toothache. The pain may cause changes to eating sleeping and behaviour.

## How will we achieve this?

By providing staff with an e-learning resource which teaches the importance of good oral health, how to carry out a mouth check and how to build a tailored daily mouth care routine.



The children and young people will also be offered a remote oral health check-in with an oral healthcare team and be provided with the equipment needed for daily mouth care in a toothbrushing pack.



## For us to do this successfully, we will need your help:

1. We may ask for feedback on the e-learning resources we are creating.
2. We will need your help in carrying out daily, effective and safe mouth care with the equipment and training provided.
3. We may approach you for information on where you feel you may need more support to enable the delivery of mouth care.



## What happens next?

You will be asked to complete an e-learning resource on "Improving mouth care for children and young people in residential special education settings". Alongside this, there will be some multiple choice questions to test your knowledge.

We look forward to your feedback and support.

"Every child and young person  
deserves a smile for life"



If you have any questions, please contact:

